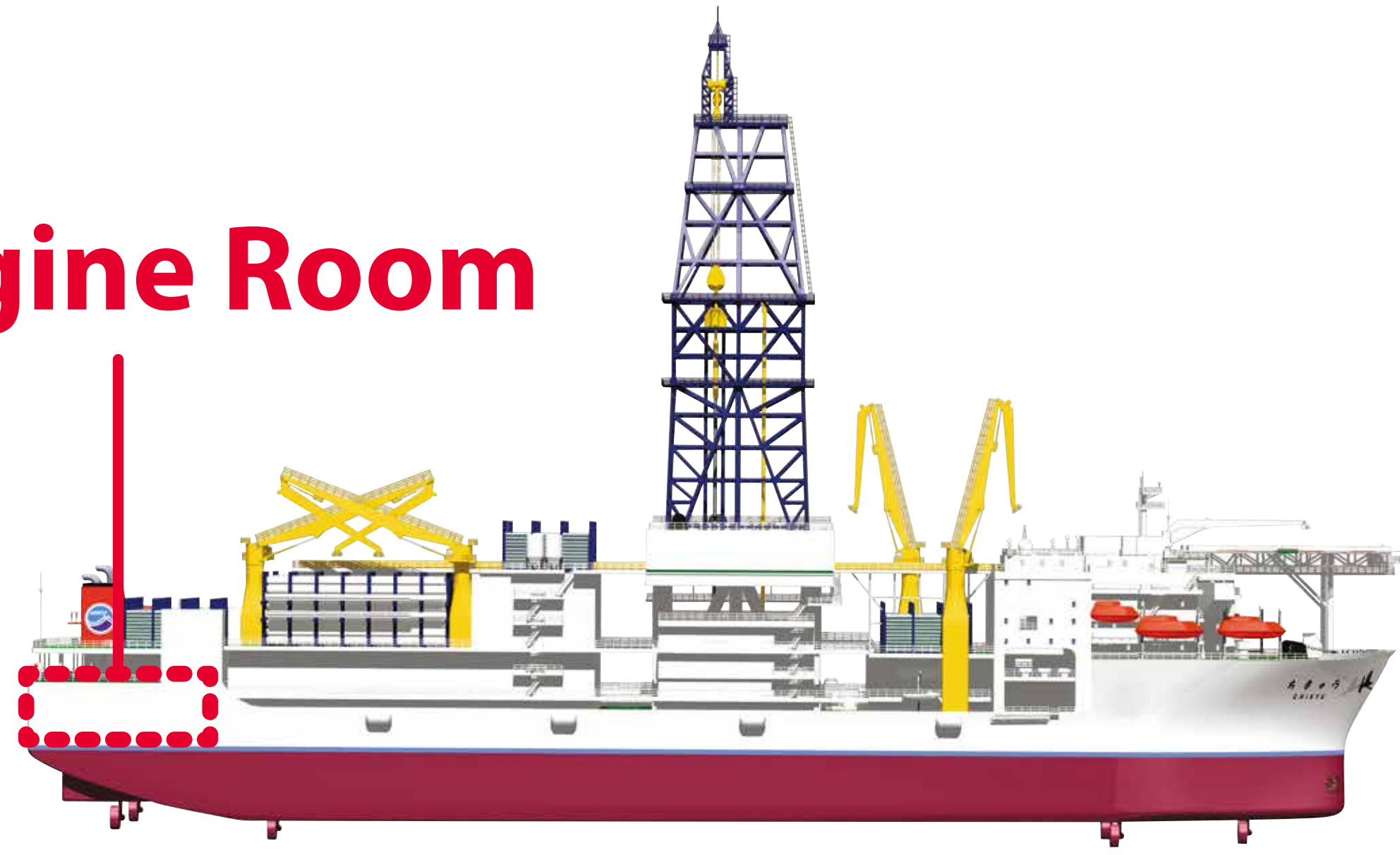
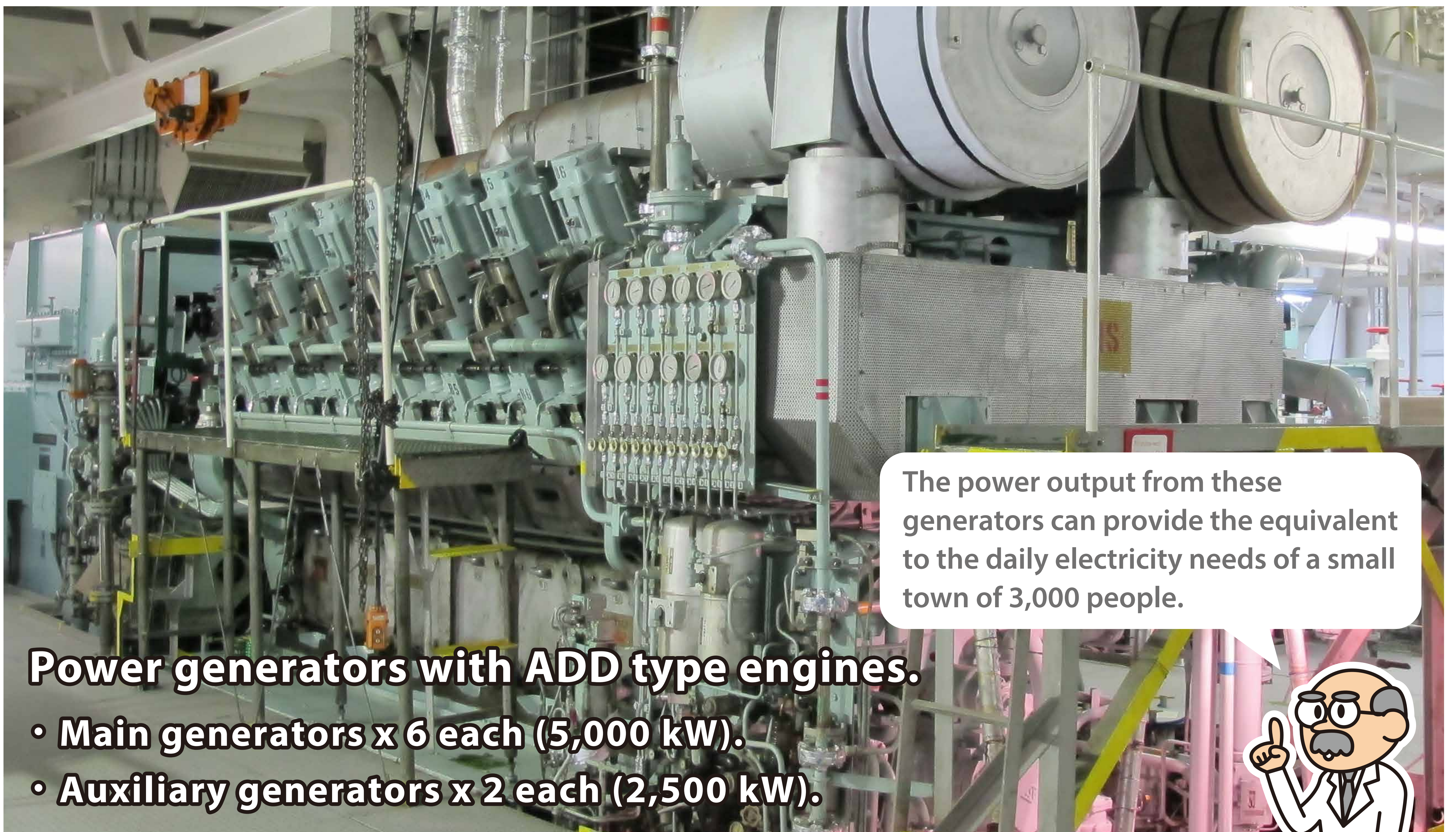


The center of *Chikyū* Engine Room

Engine Room



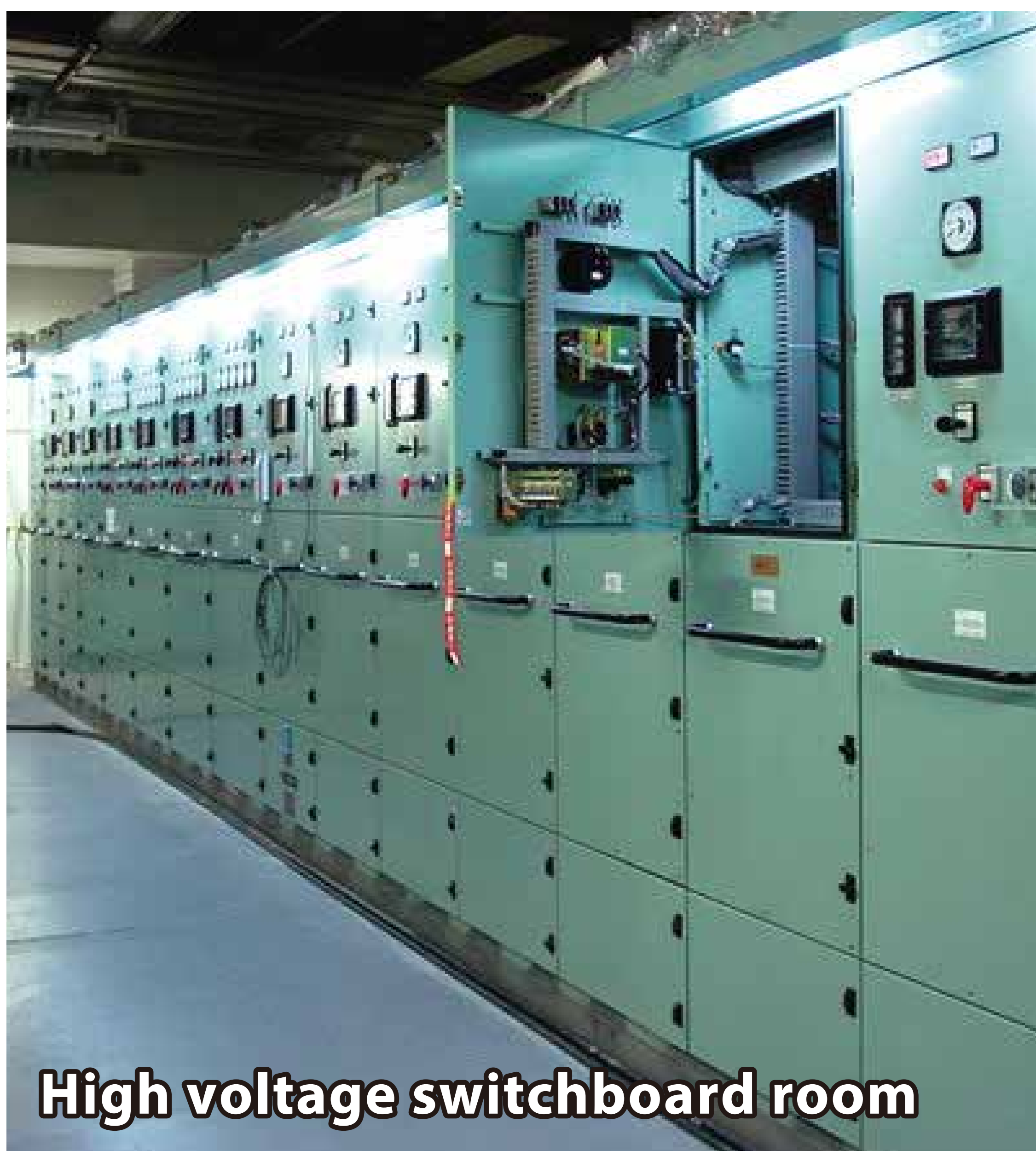
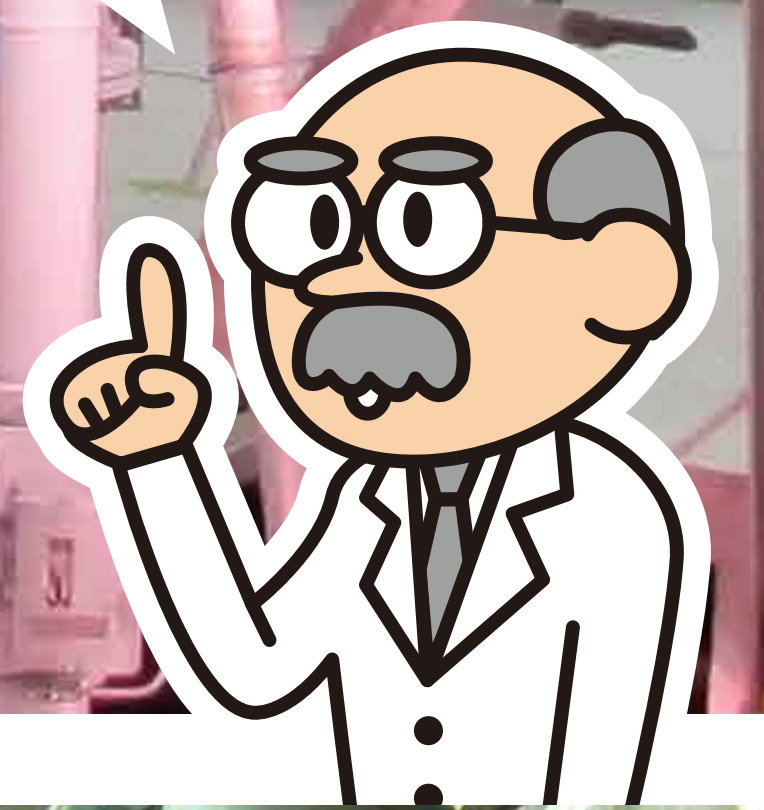
The Engine Room has 8 diesel power generators. These generators not only produce electricity used for thrusters, drilling equipment, and general ship life and labs, but also for the purification of seawater. Engine room is located to the aft of Chikyū to prevent exhaust gases and noise from affecting the accommodation and laboratory areas.



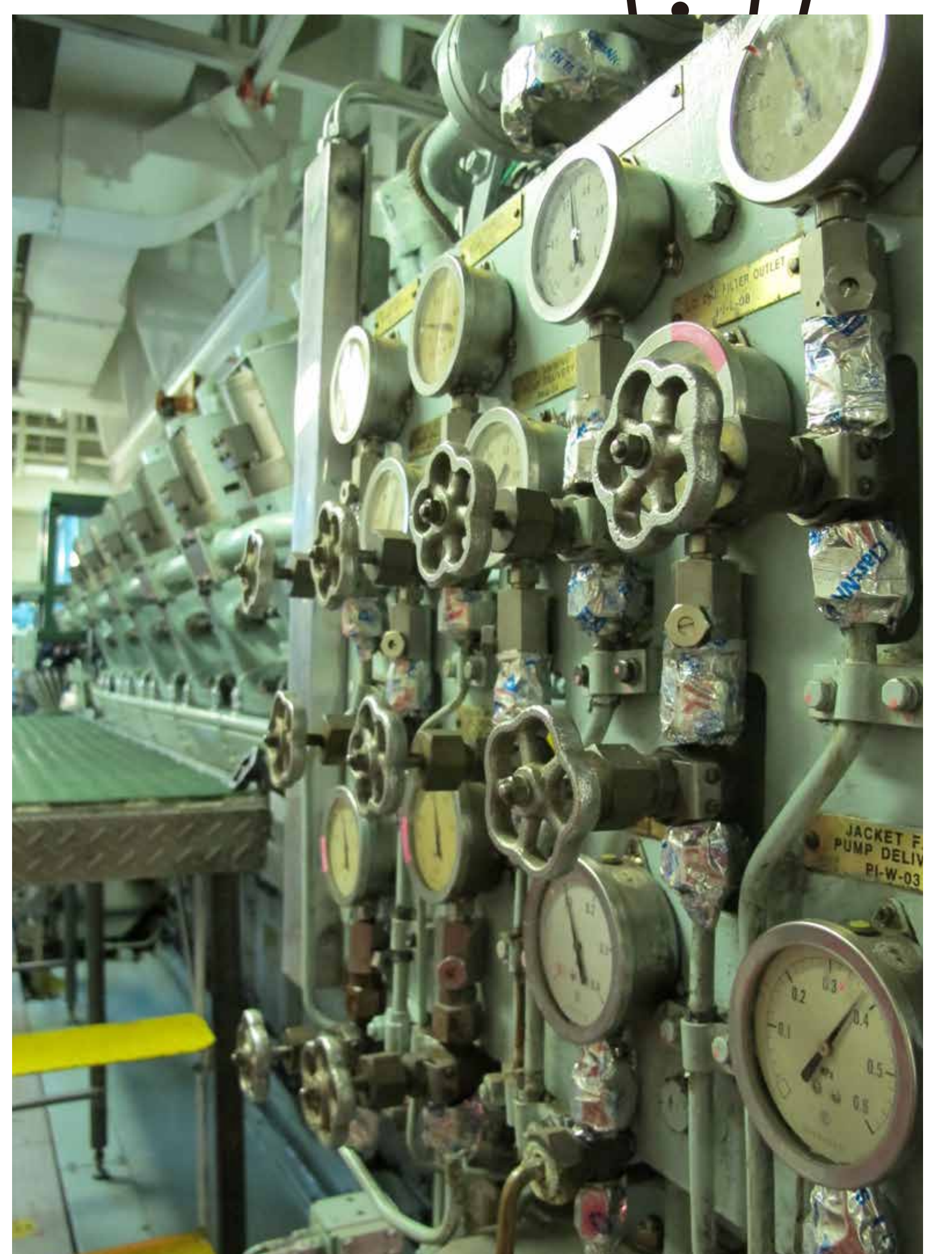
The power output from these generators can provide the equivalent to the daily electricity needs of a small town of 3,000 people.

Power generators with ADD type engines.

- Main generators x 6 each (5,000 kW).
- Auxiliary generators x 2 each (2,500 kW).



High voltage switchboard room



◀ Engine monitoring room
Engineers can monitor the engine conditions from a special control room.

