



**Nonprecipitating Phenomena  
Seen by the S-PolKa Radar  
In AMIE**

**R. Houze  
University of Washington**

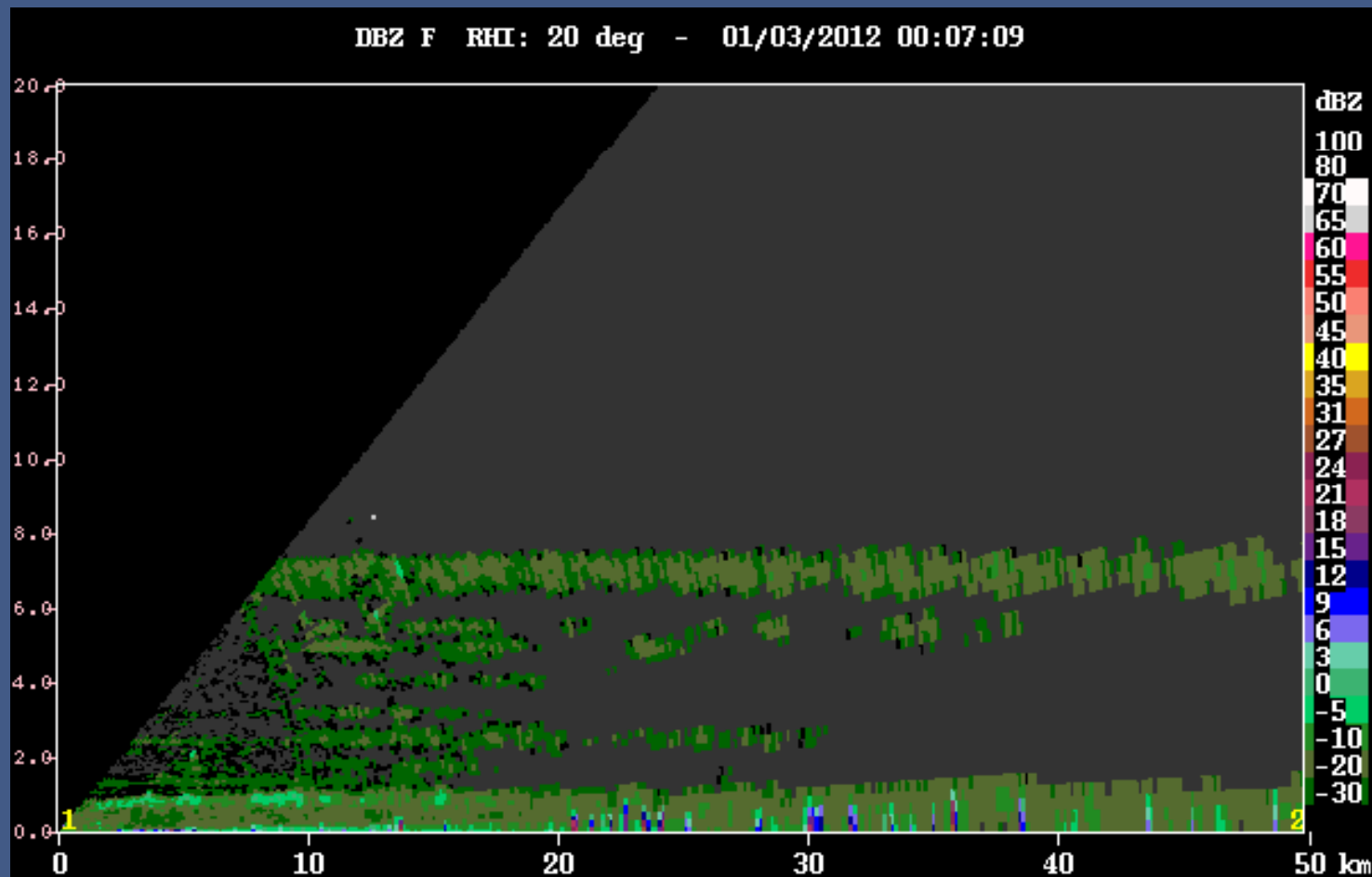
ARM Science Team Meeting, Washington DC, 14 March 2012

# Summary

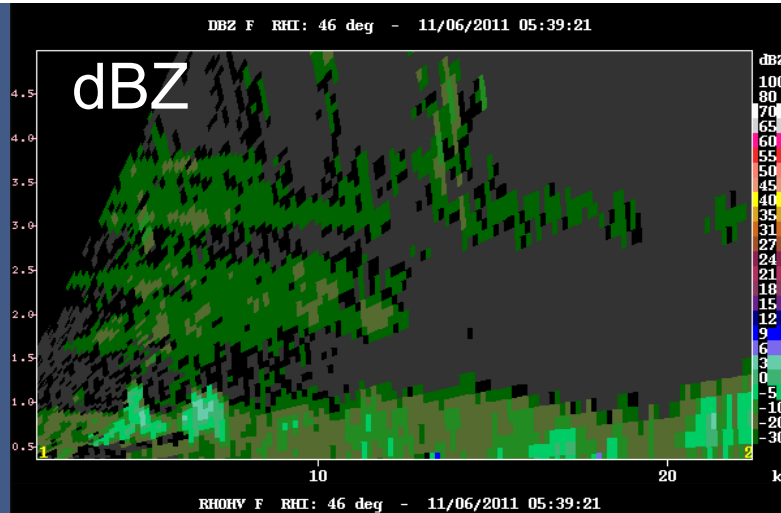
## Non-precipitation features seen by S-PolKa

- Humidity
- Cumulus organization
- Cirrostratus & altocumulus layers
- Anvils of deep convection

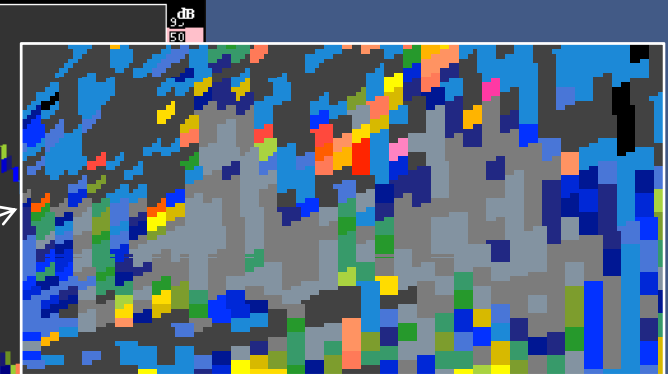
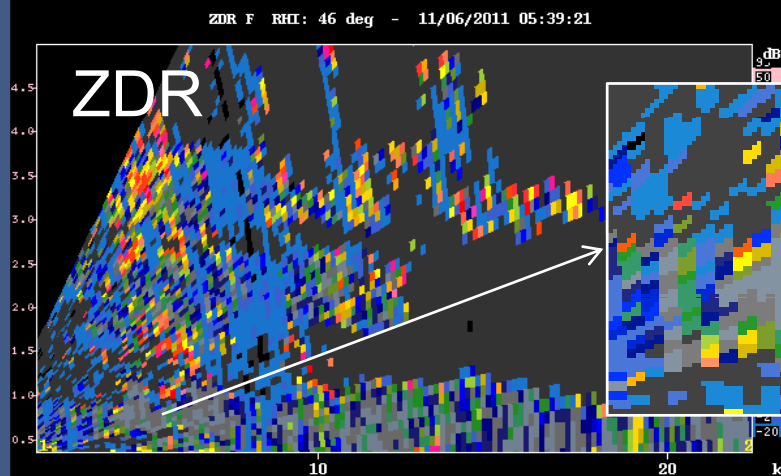
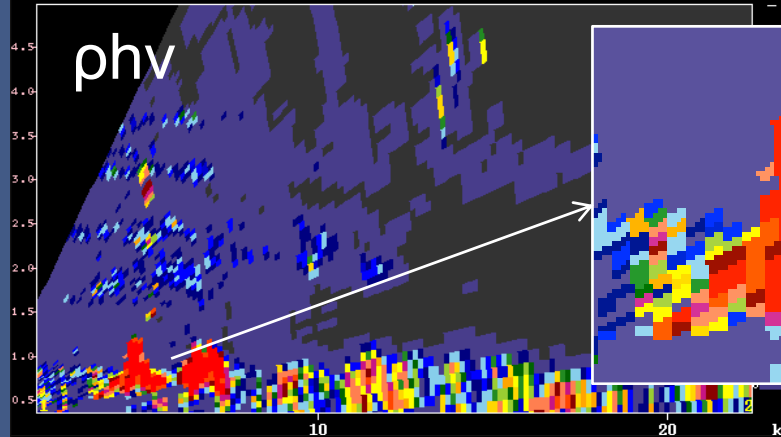
# Humidity gradient layers and nonprecipitating clouds

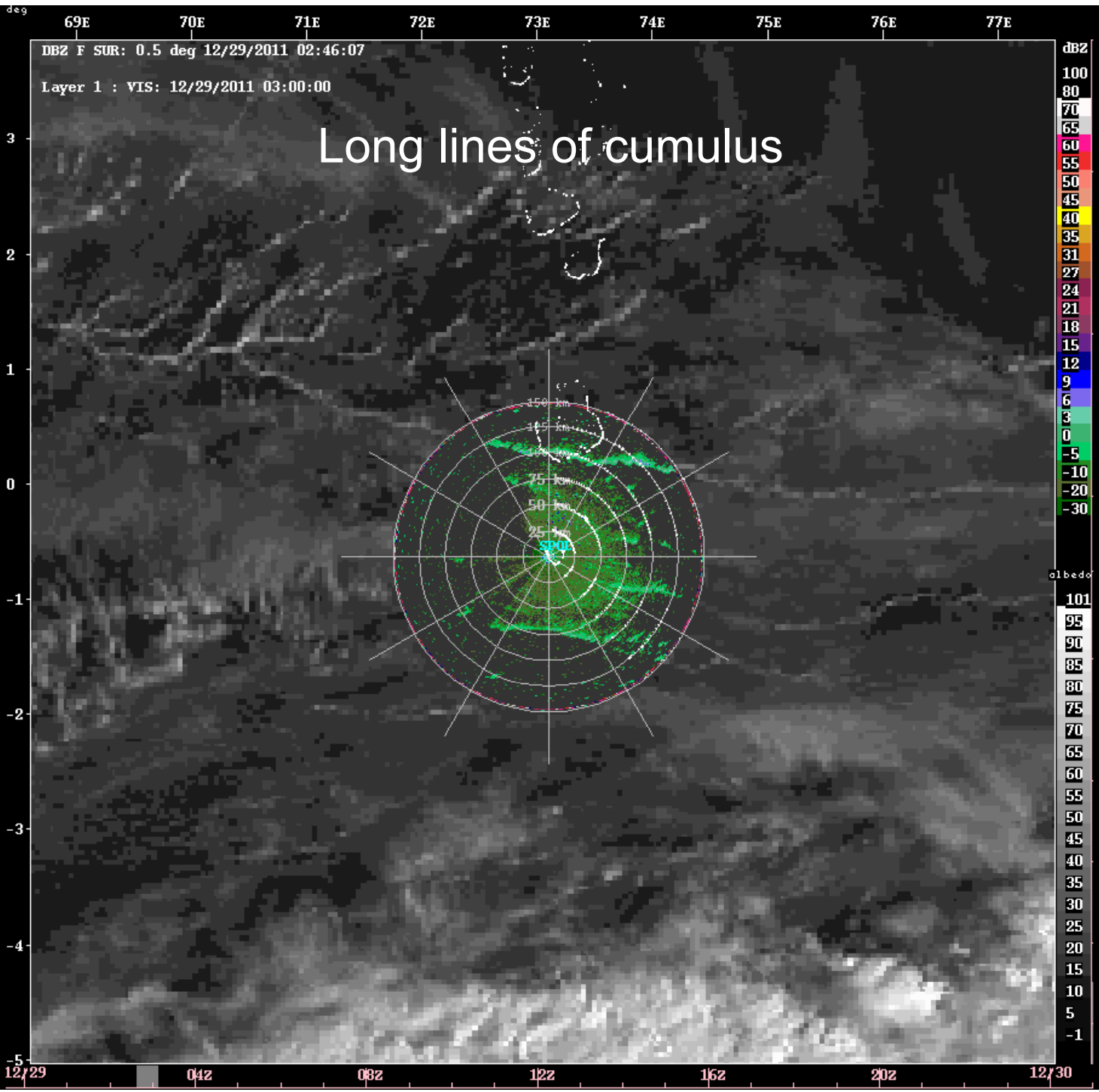


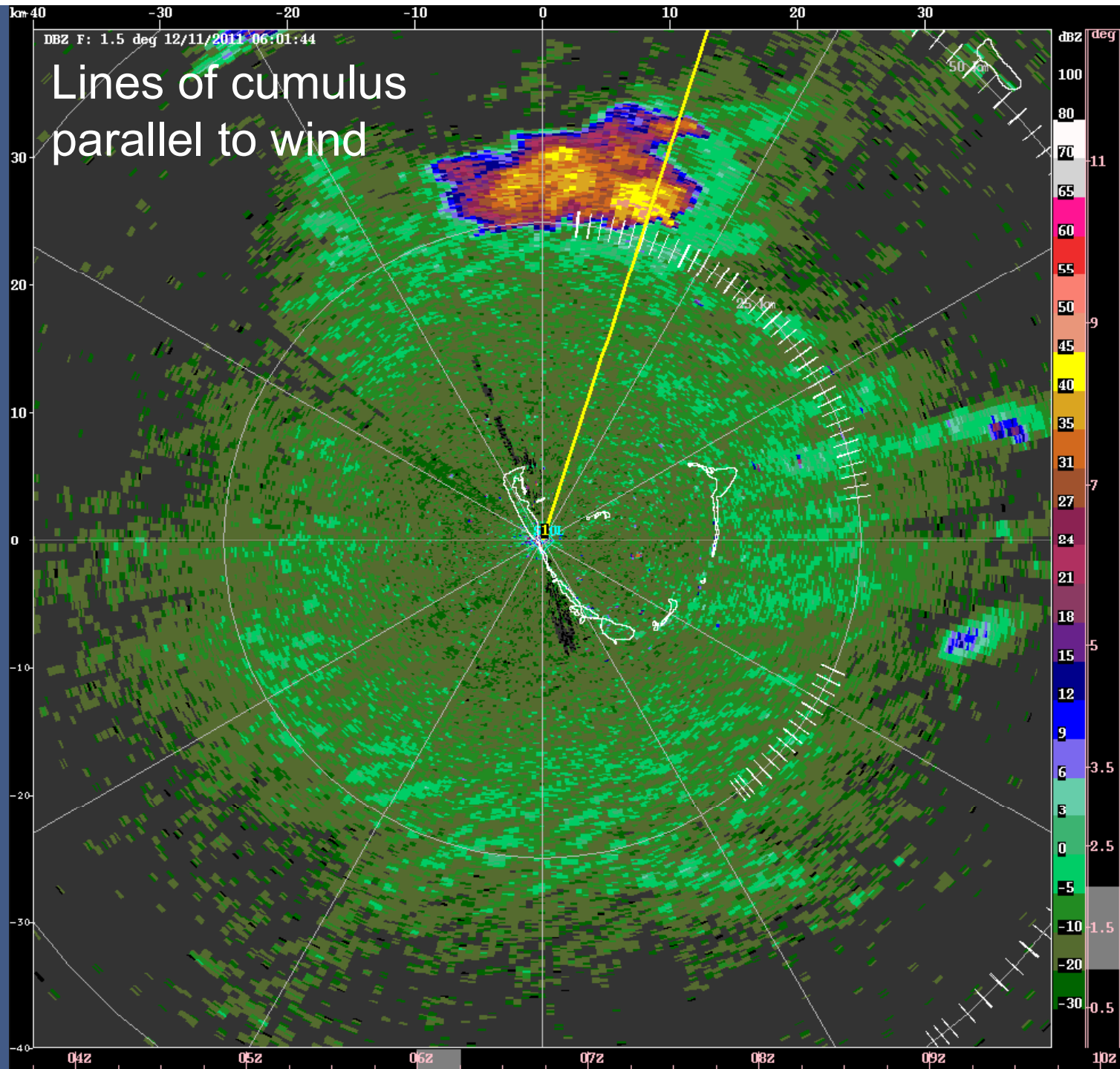
Bragg scattering shows  
nonprecipitating  
cumulus in the  
moist layer

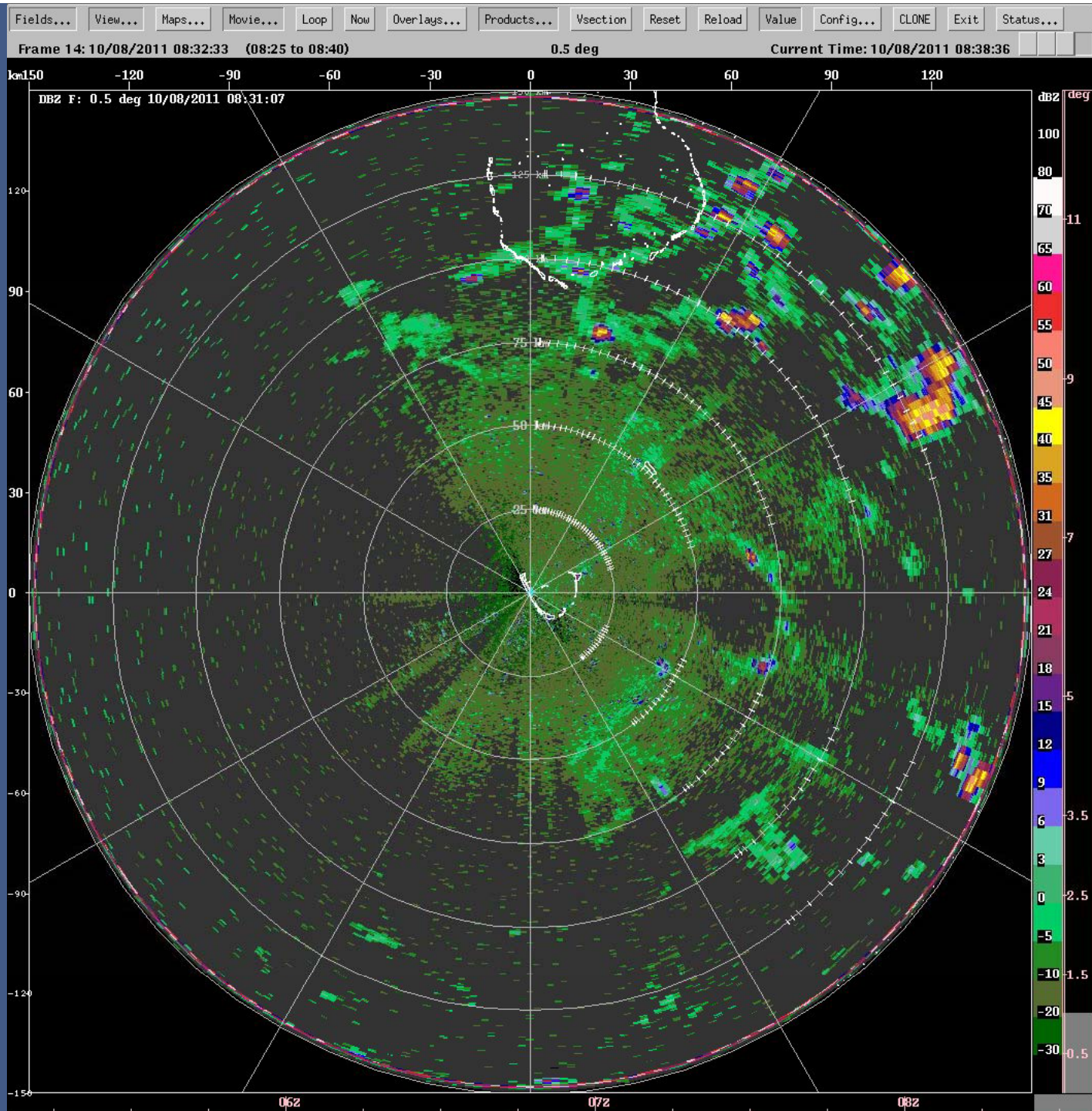


“Mantle Echoes”  
Knight and  
Miller (1998)









Slightly active  
moist layer

Clouds  
building at cold  
pool  
boundaries

# End

This research was sponsored by DOE ARM grant #DE-SC0001164/ER-64752