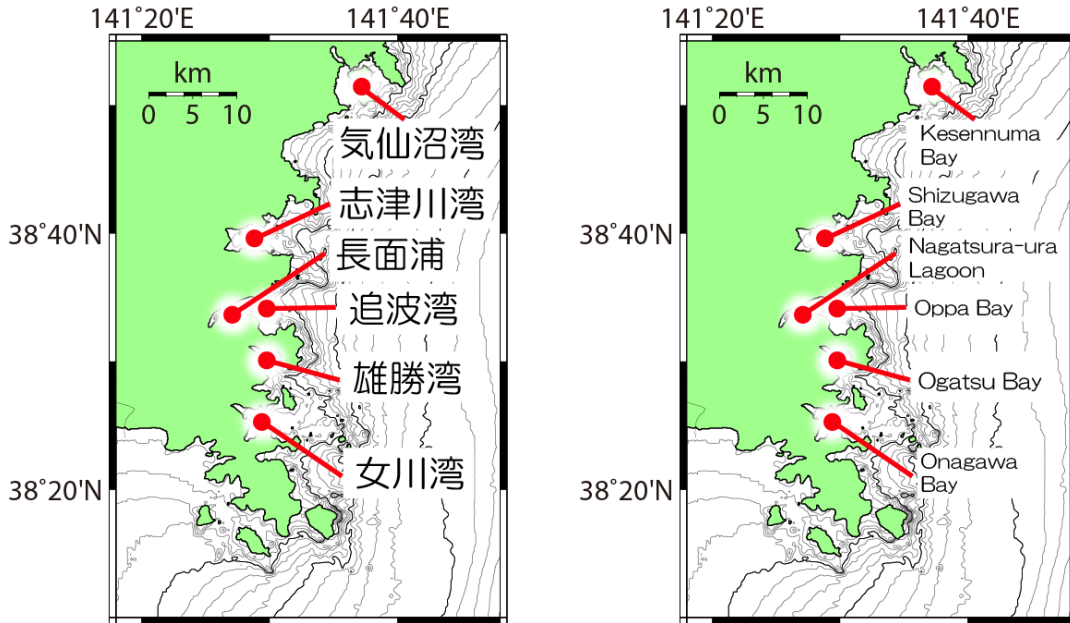


宮城県沿岸域における湾内の海水流動調査 / Investigation of flow field in bays of Sanriku coast  
 調査地域・海域の位置図 / Research map

1. 調査海域 / Study site



2. 調査地点 / Research point

(1) 女川湾 / Onagawa Bay

調査地点 Station	緯度 Latitude	経度 Longitude
os.01	38° 24.2449'	141° 32.1394'
os.02	38° 24.5531'	141° 32.0043'
os.03	38° 25.1527'	141° 31.8350'
os.04	38° 25.6018'	141° 31.6925'
os.05	38° 26.0955'	141° 31.5500'
os.06	38° 25.1527'	141° 30.9897'
os.07	38° 25.6018'	141° 31.0000'
os.08	38° 26.0509'	141° 30.9896'
os.09	38° 26.5000'	141° 31.0000'
os.10	38° 26.5000'	141° 30.5000'
os.11	38° 25.9030'	141° 30.0000'
os.12	38° 25.5408'	141° 30.0000'
os.13	38° 25.1527'	141° 30.0000'
os.14	38° 24.6783'	141° 28.8900'

H26 年調査計画書 / Observation Plan, 2014

os.15	38° 24.1783′	141° 28.4900′
os.16	38° 25.1527′	141° 28.8900′
os.17	38° 25.5408′	141° 28.8900′
os.18	38° 25.9030′	141° 28.8900′
os.19	38° 26.0783′	141° 28.0900′
os.20	38° 26.4783′	141° 27.4900′

(2) 志津川湾 / Shizugawa Bay

調査地点 Station	緯度 Latitude	経度 Longitude
ss.01	38° 39.9179′	141° 27.3787′
ss.02	38° 39.5480′	141° 27.3787′
ss.03	38° 39.0379′	141° 27.3787′
ss.04	38° 39.0379′	141° 28.2197′
ss.05	38° 39.5480′	141° 28.2197′
ss.06	38° 40.1000′	141° 28.2197′
ss.07	38° 40.3313′	141° 29.0606′
ss.08	38° 39.9468′	141° 29.0606′
ss.09	38° 38.5480′	141° 29.0606′
ss.10	38° 38.9637′	141° 29.0606′
ss.11	38° 38.5901′	141° 30.1417′
ss.12	38° 39.0036′	141° 30.0176′
ss.13	38° 39.5441′	141° 29.8553′
ss.14	38° 39.9468′	141° 29.7344′
ss.15	38° 40.1971′	141° 29.6592′
ss.16	38° 40.3313′	141° 29.6189′
ss.17	38° 39.5770′	141° 28.1210′
ss.18	38° 38.7769′	141° 29.6012′
ss.19	38° 40.2157′	141° 28.6402′
ss.20	38° 39.0379′	141° 27.7992′

(3) 雄勝湾 / Ogatsu Bay

調査地点 Station	緯度 Latitude	経度 Longitude
og.01	38° 31.1216′	141° 28.1970′

H26 年調査計画書 / Observation Plan, 2014

og.02	38° 31.0011'	141° 29.0198'
og.03	38° 30.9360'	141° 28.9310'
og.04	38° 30.8294'	141° 28.7904'
og.05	38° 30.4304'	141° 29.3752'
og.06	38° 30.5230'	141° 29.4330'
og.07	38° 30.6078'	141° 29.5432'
og.08	38° 30.1447'	141° 29.4339'
og.09	38° 30.4480'	141° 30.1572'
og.10	38° 30.4941'	141° 30.6564'
og.11	38° 30.3001'	141° 30.3563'
og.12	38° 30.1360'	141° 30.0950'
og.13	38° 29.9701'	141° 29.8235'
og.14	38° 29.8958'	141° 30.8111'
og.15	38° 29.7230'	141° 30.4880'
og.16	38° 29.5558'	141° 30.1645'
og.17	38° 29.3234'	141° 29.7755'
og.18	38° 28.7240'	141° 30.1438'
og.19	38° 28.9361'	141° 30.4031'
og.20	38° 29.2250'	141° 30.7250'
og.21	38° 29.4376'	141° 30.9530'
og.22	38° 29.0708'	141° 31.6582'
og.23	38° 28.9101'	141° 30.9892'

(4) 気仙沼湾 / Kesenuma Bay

調査地点 Station	緯度 Latitude	経度 Longitude
ks.01	38° 54.0841'	141° 34.9490'
ks.02	38° 53.6442'	141° 35.2277'
ks.03	38° 53.4904'	141° 35.6487'
ks.04	38° 52.9385'	141° 35.9017'
ks.05	38° 52.2647'	141° 35.8780'
ks.06	38° 51.2698'	141° 35.8892'
ks.07	38° 50.2467'	141° 35.8217'
ks.08	38° 50.4841'	141° 36.2659'
ks.09	38° 50.5813'	141° 36.4620'

## H26 年調査計画書 / Observation Plan, 2014

ks.10	38° 52.7302′	141° 36.2278′
ks.11	38° 52.8114′	141° 36.9053′
ks.12	38° 53.1731′	141° 37.1188′
ks.13	38° 53.2715′	141° 37.6753′
ks.14	38° 53.4923′	141° 37.9673′
ks.15	38° 52.9654′	141° 37.8885′
ks.16	38° 52.6971′	141° 38.2123′
ks.17	38° 52.1447′	141° 38.4913′
ks.18	38° 51.7398′	141° 39.2423′
ks.19	38° 51.6175′	141° 38.9086′
ks.20	38° 51.4561′	141° 38.4474′
ks.21	38° 51.3214′	141° 37.9386′
ks.22	38° 49.5403′	141° 36.2084′
ks.23	38° 48.3849′	141° 36.5079′
ks.24	38° 49.7435′	141° 36.9132′
ks.25	38° 49.0858′	141° 37.4217′
ks.26	38° 50.7889′	141° 39.6437′
ks.27	38° 51.1622′	141° 39.2328′

## (5) 追波湾 / Oppa Bay

調査地点 Station	緯度 Latitude	経度 Longitude
op.01	38° 34.4248′	141° 28.5688′
op.02	38° 34.7142′	141° 29.3008′
op.03	38° 34.4248′	141° 29.3008′
op.04	38° 33.9365′	141° 29.3008′
op.05	38° 34.9563′	141° 30.0057′
op.06	38° 34.4248′	141° 30.0057′
op.07	38° 33.8710′	141° 30.0057′
op.08	38° 33.3719′	141° 30.1488′
op.09	38° 32.7027′	141° 30.0057′
op.10	38° 35.4958′	141° 31.0000′
op.11	38° 34.9563′	141° 31.0000′
op.12	38° 34.4248′	141° 31.0000′
op.13	38° 33.8771′	141° 31.0000′

## H26 年調査計画書 / Observation Plan, 2014

op.14	38° 35.4958′	141° 32.0000′
op.15	38° 34.9563′	141° 32.0000′
op.16	38° 34.4248′	141° 32.0000′
op.17	38° 33.8894′	141° 32.0000′
op.18	38° 33.3719′	141° 32.0000′

## (6) 長面浦 / Nagatsura-ura Lagoon

調査地点 Station	緯度 Latitude	経度 Longitude
ng.c1	38° 33.3132′	141° 27.76320′
ng.c2	38° 33.1998′	141° 27.69660′
ng.c3	38° 33.1986′	141° 27.87180′
ng.c4	38° 33.0906′	141° 28.04340′
ng.c5	38° 33.0846′	141° 27.87840′
ng.d1	38° 33.0858′	141° 27.70500′
ng.d2	38° 33.0798′	141° 27.51480′
ng.d3	38° 32.9592′	141° 27.51480′
ng.e1	38° 32.9718′	141° 27.70320′
ng.e2	38° 32.9706′	141° 27.87960′
ng.e3	38° 32.9718′	141° 28.05120′
ng.00	38° 32.8374′	141° 28.05660′
ng.01	38° 32.8344′	141° 27.88500′
ng.02	38° 32.8392′	141° 27.70500′
ng.03	38° 32.8296′	141° 27.51480′
ng.04	38° 32.6982′	141° 27.51300′
ng.05	38° 32.6202′	141° 27.38820′
ng.06	38° 32.5656′	141° 27.51180′
ng.07	38° 32.4438′	141° 27.52200′
ng.08	38° 32.7048′	141° 27.70620′
ng.09	38° 32.7312′	141° 27.97500′
ng.10	38° 32.6358′	141° 28.02060′
ng.11	38° 33.7752′	141° 27.48600′
ng.12	38° 33.5748′	141° 27.42960′
ng.13	38° 33.6066′	141° 27.46380′
ng.14	38° 33.6324′	141° 27.49440′

H26 年調査計画書 / Observation Plan, 2014

ng.15	38° 33.5544′	141° 27.54660′
ng.16	38° 33.4506′	141° 27.60120′
ng.17	38° 33.4566′	141° 27.61800′
ng.17′	38° 33.4638′	141° 27.63600′
ng.18	38° 33.3372′	141° 27.65760′
ng.19	38° 33.3708′	141° 27.70200′
ng.20	38° 33.4044′	141° 27.74280′