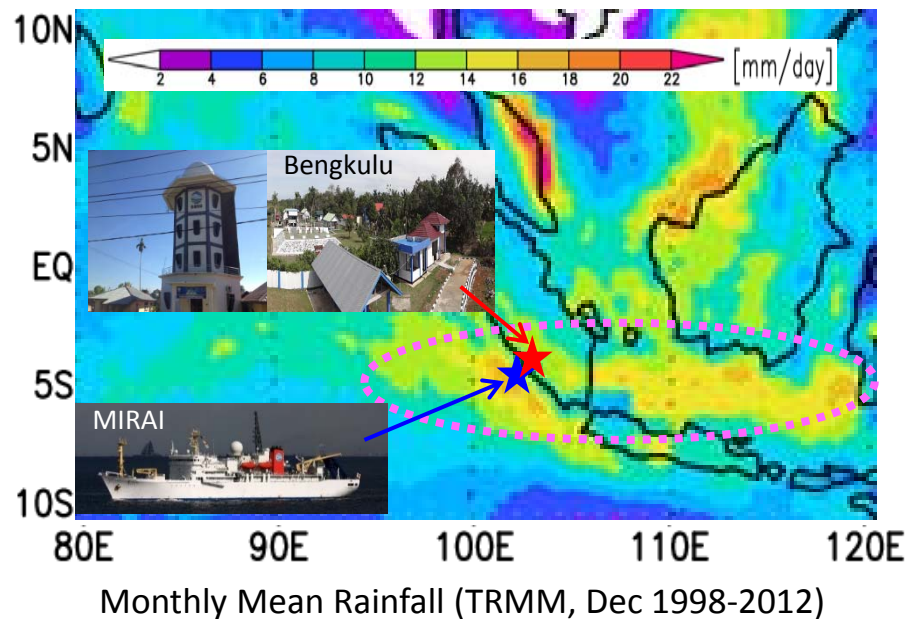


MJO & Diurnal Cycle Rain Study, Nov 2017 - Jan 2018



Target: MJO vs. Diurnal cycle rain near the coast line

Period: mid-Nov 2017 – mid-Jan 2018 (Land-based)
Dec 2017 (Ship)

Obs: Radars, Radiosonde (8/day), LIDAR, SMet, CTD, ADCP, Wave-glider, etc.

Participants:

Japan	(JAMSTEC, U Tokyo, U Toyama, Kyoto U, Yamaguchi U, etc.)
Indonesia	(BMKG, BPPT, LAPAN, ITB, IPB, U Bengkulu, etc.)

Remarks: During the IOP, real-time forecasting is performed using NICAM.

