

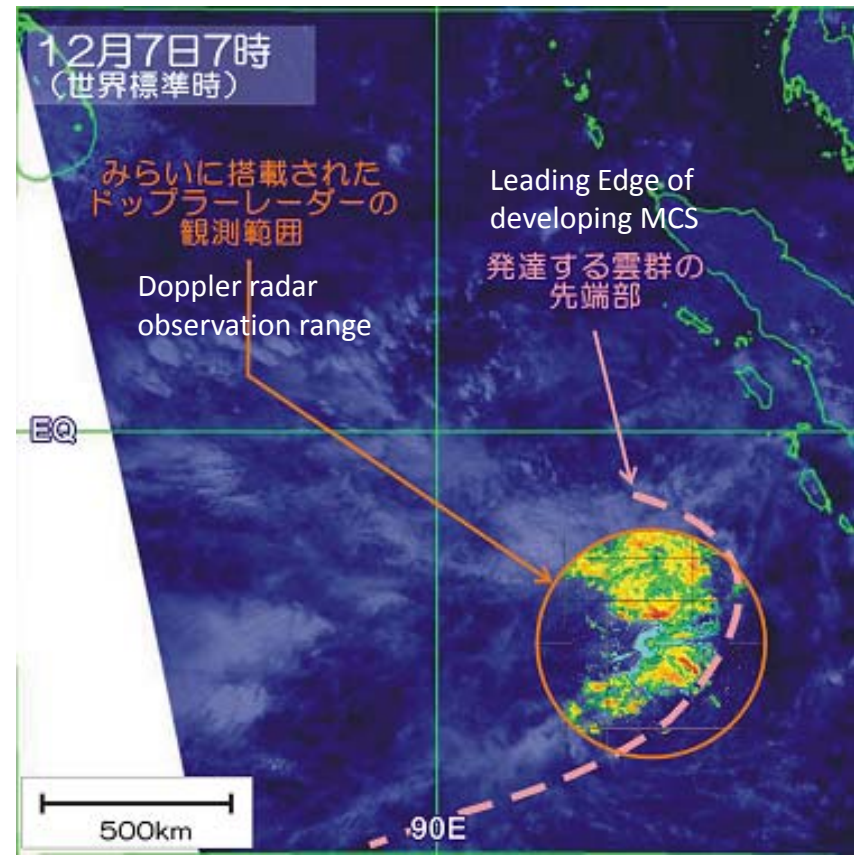
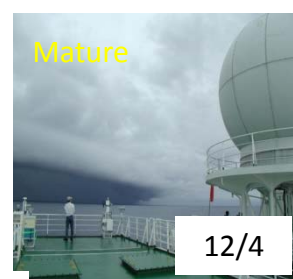
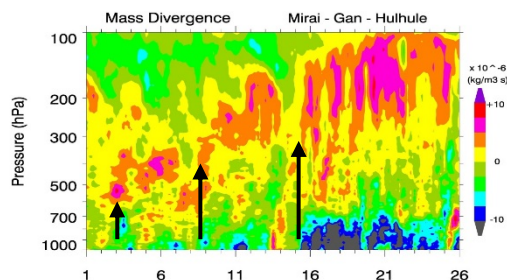
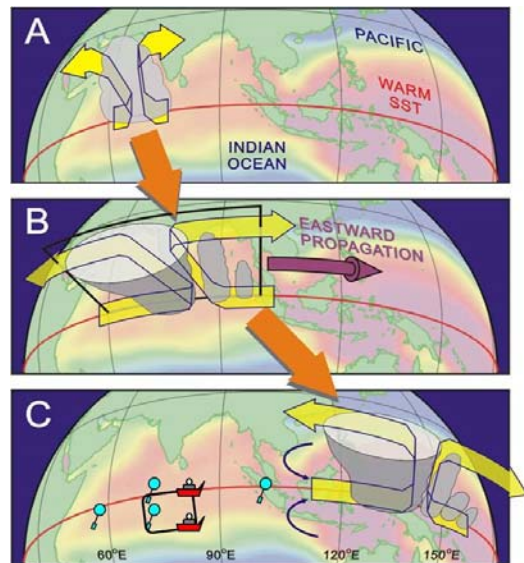
MISMO : Mirai Indian Ocean cruise for the Study of the MJO Convection Onset

Purpose : To capture the characteristics of atmospheric and oceanic conditions in the onset region / season of the MJO-convections

Period : October – December 2006

Major Results :

MISMO captured the onset of the MJO-convection first ever as in-situ.
Sounding array revealed the stepwise moistening prior to the onset.



Time-height section of mass divergence (Yoneyama et al. 2008)