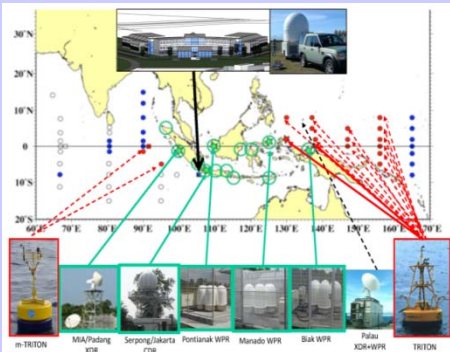
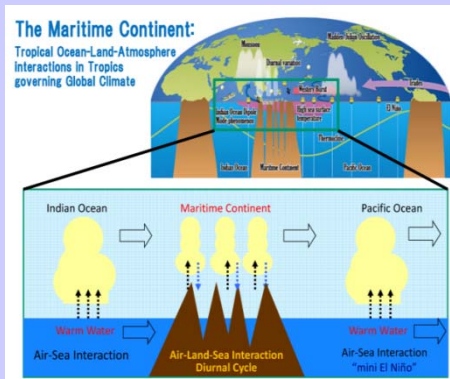


SATREPS-MCCOE Project (2010.02-2014.03)

(Scientific & Technology REsearch Partnership for Sustainable Development-Maritime Continent Center Of Excellence [MCCOE])

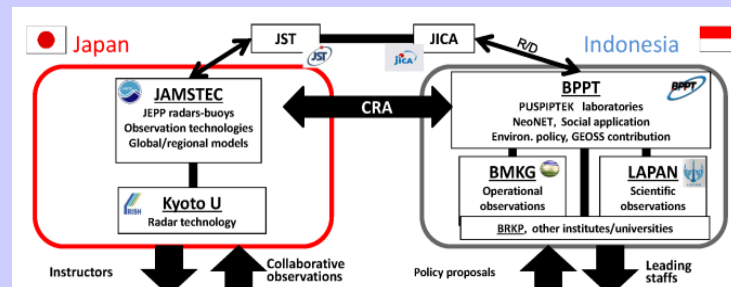
An international research center for tropical meteorology, hydrology, oceanography, and climatology was established initially under Japanese JICA-JST funds, and has been fully operated by Indonesia.

Background

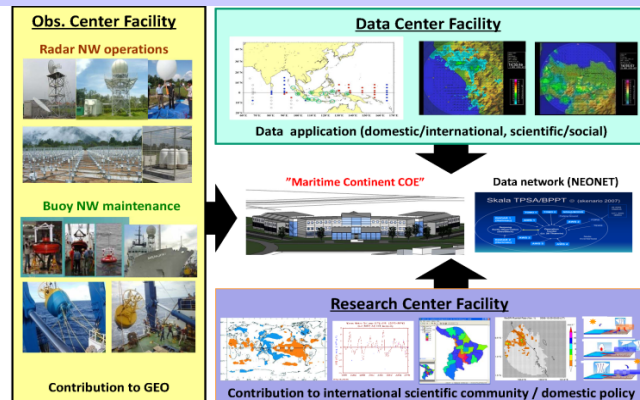


In around Indonesian maritime continent (IMC) diurnal cycle, interseasonal variations (ISVs), monsoon and interannual variations (ENSO, IOD) are generated, and have been observed by radar and buoy networks.

Structure and facilities

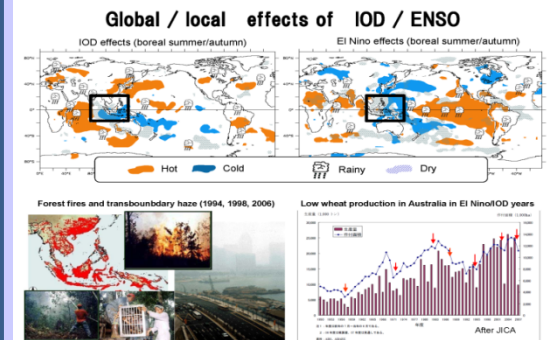
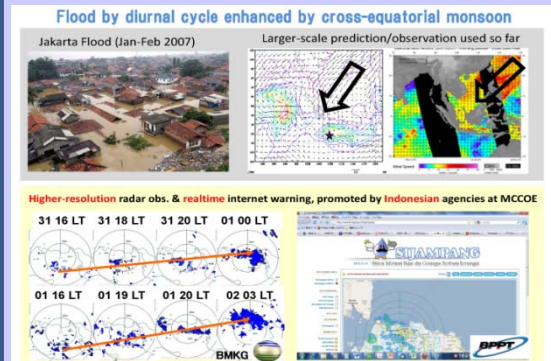


Maritime Continent COE (MCCOE)



Japan-Indonesia record of discussions (R/D) and JAMSTEC-BPPT collaborative research agreement (CRA) were signed in 2010. A building is constructed in Serpong near Jakarta during 2011. Observation, data, and research facilities are completed in 2014.

Social benefits and contribution to GEOSS



Both local and global climatic variabilities are monitored, studied, and socially applied by scientists/engineers at MCCOE, and results will contribute to domestic, regional and international strategy/policy as aimed by GEOSS.