

Chikyu Career Map



Drilling Operations

OSI: Operational Superintendent

The OSI is in charge of all drilling operations and personnel aboard ship. The OSI develops the drilling plan and leads the drilling engineers.

OIM: Offshore Installation Manager

The OIM is responsible for offshore operations and safety after the vessel has reached the drilling site and during drilling operations.

Tool Pusher

Work area: Drill floor

TP is an in-situ field overseer, who oversees the drillers and the roughnecks. They set work schedules and oversee maintenance work for the drilling equipment.

Driller

Work area: Drill floor

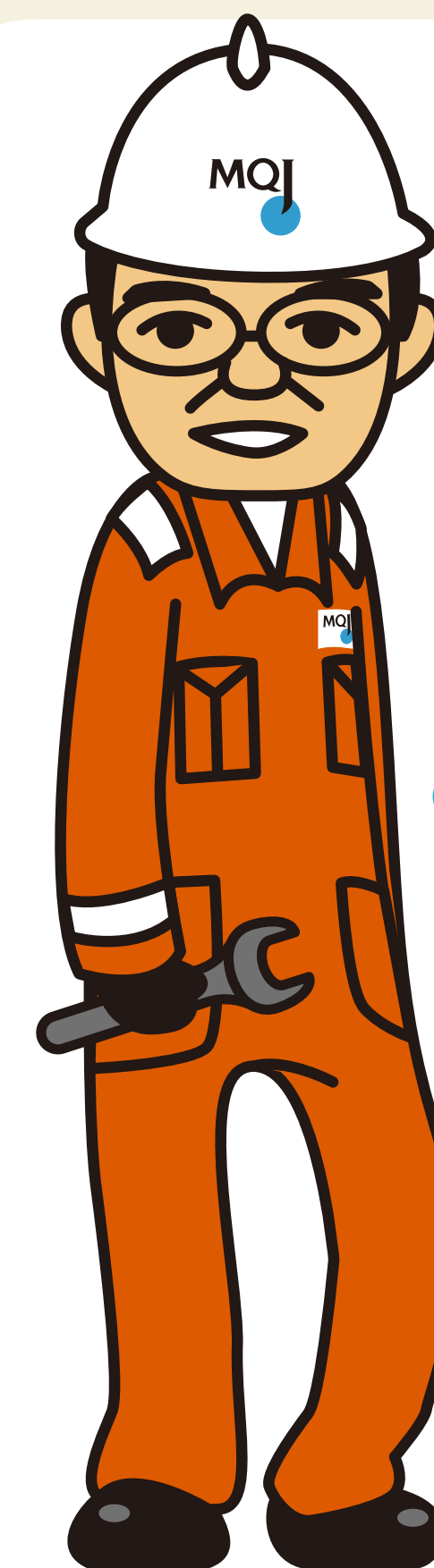
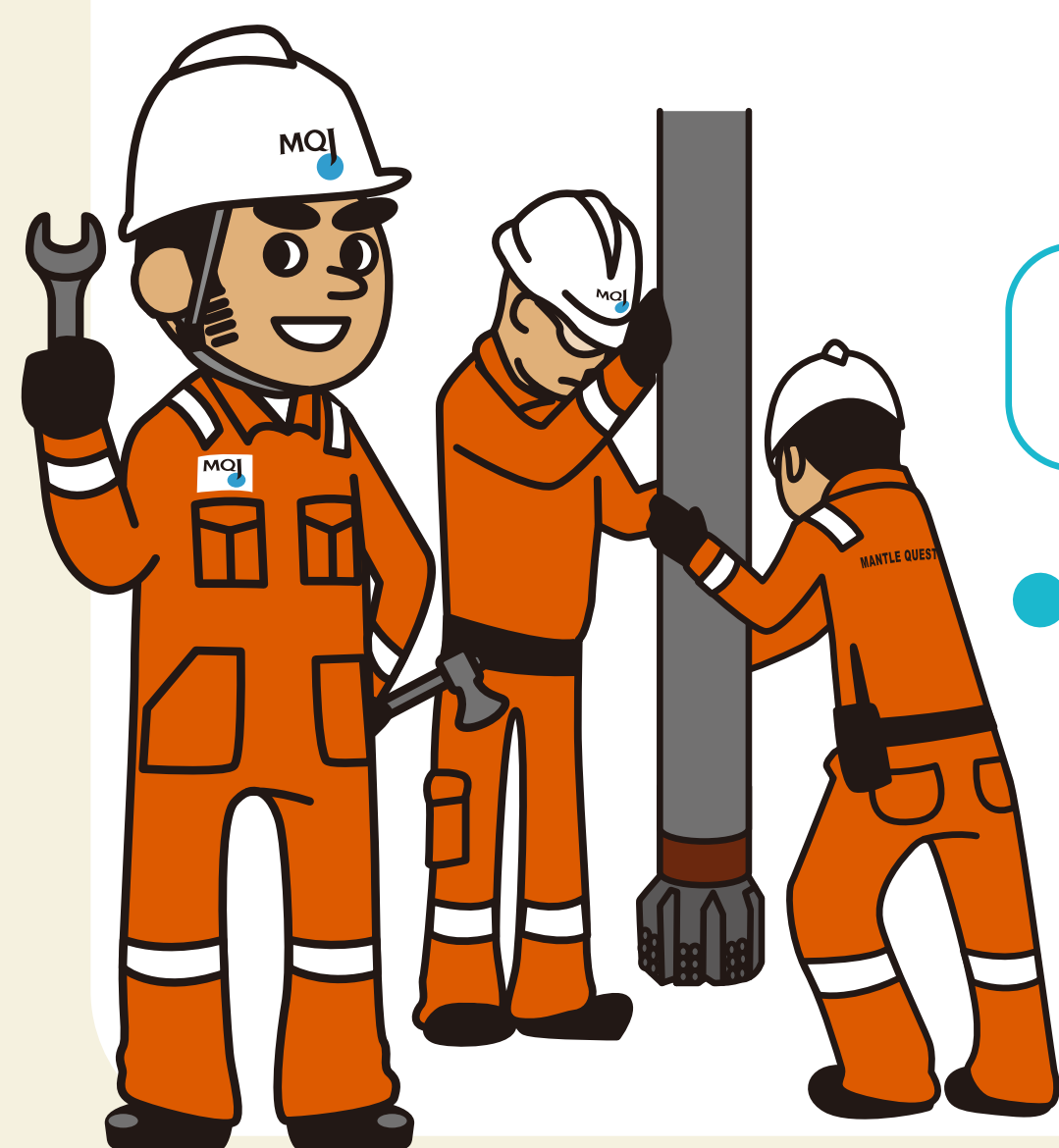
The driller and assistant drillers command the drill floor operations. They control the drill bit and drill pipe, and track all the variables related to drill floor and downhole conditions for drilling.



Roughnecks

Work area: Drill floor

Roughnecks conduct all the movement and oversight of tools, equipment, and maintenance on the drill floor.



Ship's Crew

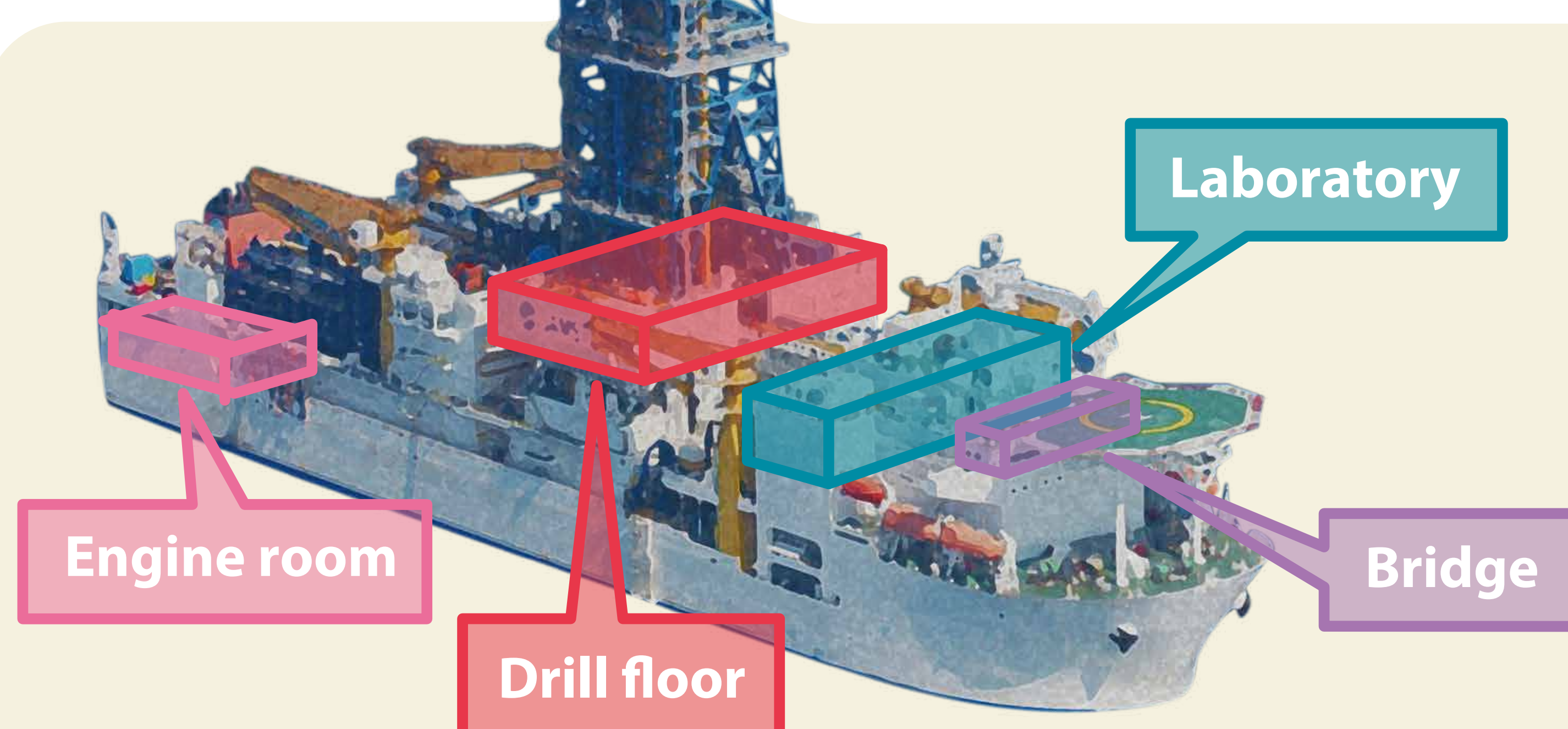
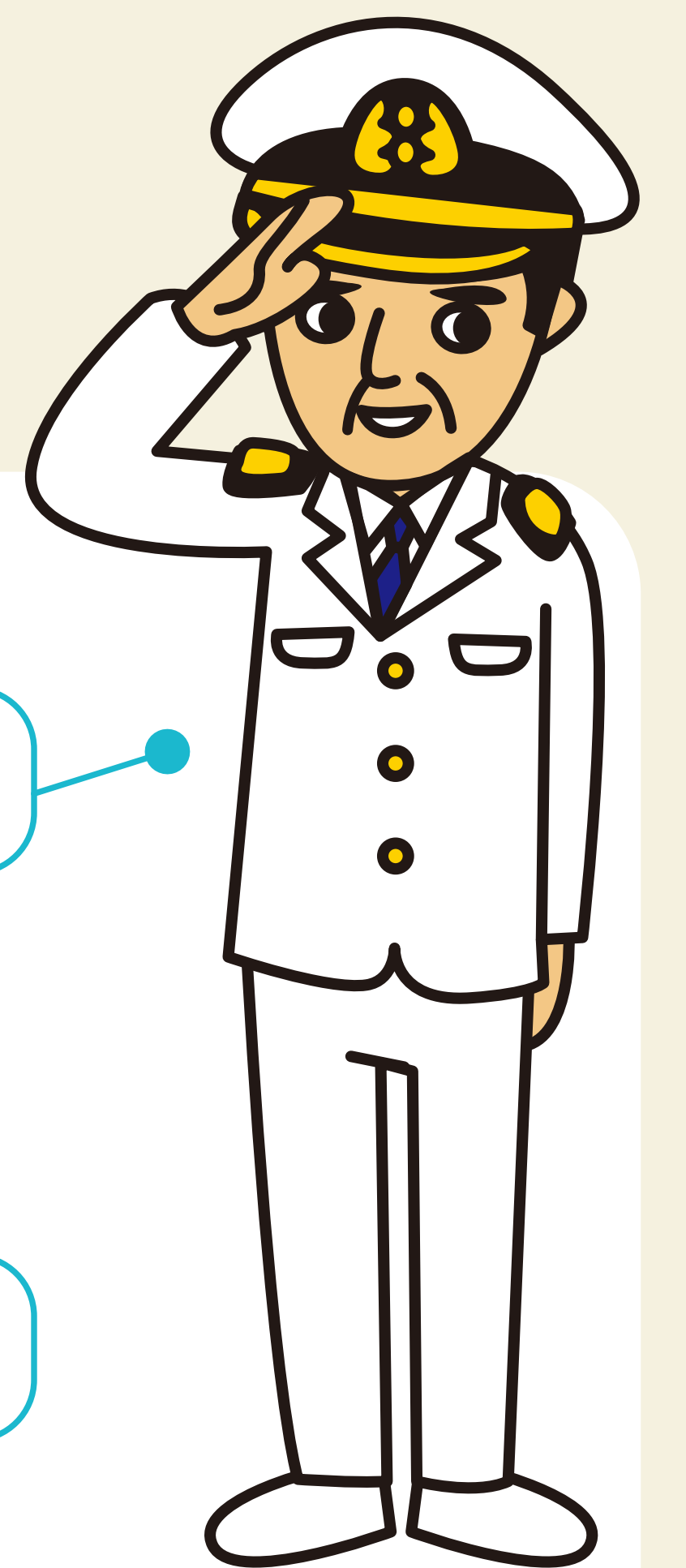
Captain

The commander of the ship at sail and under sail. The Captain is responsible for the overall ship safety, movement, and maintenance.

Chief Engineering officer

Work area: Engine room

The Chief Engineer oversees all engine room work and personnel. The ship's engines produce all the electrical power that is used aboard ship. They are responsible for the ship's support facilities.

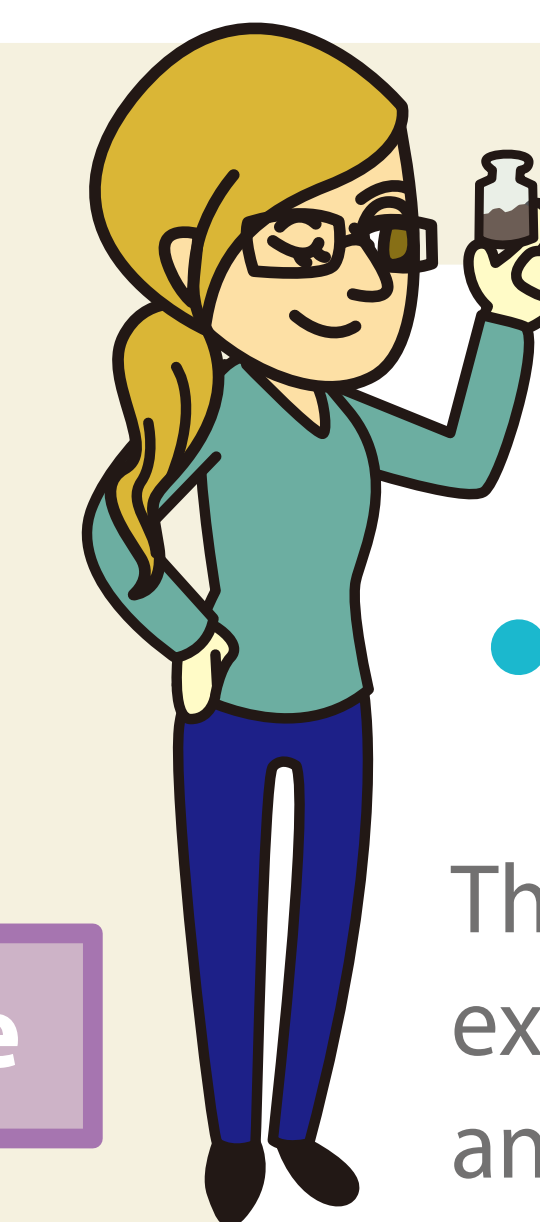


Research Scientists

Researchers

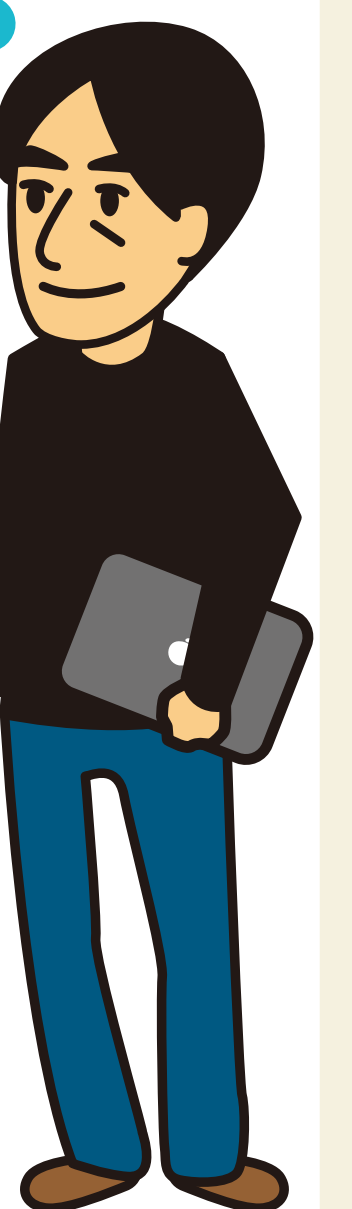
Work area: Laboratory

The research scientists develop the expedition science goals and analyze the data and samples collected by the expedition.



EPM: Expedition Project Manager

The EPM helps the expedition scientists plan and organize the science goals and logistics. They oversee the scientists and lab staff, and ensure that there is good communication and collaboration among and between the scientists and ship staff. They support the expedition before, during, and after the time at sea.



Shipboard Life Support Personnel

Steward

Work area: The ship's galley, messroom, and laundry

The Steward oversees daily housekeeping activities and meal preparations. The common areas in the accommodations, the cabins, and laundry are all part of their duties.



Nurse

Work area: Clinic / hospital

The Ship's Nurse watches over and cares for injuries, sickness, and the general health of all personnel aboard ship.



Laboratory technician

Work area: Laboratory

The laboratory technicians operate and maintain all the scientific analytical instruments aboard Chikyu's laboratories. They aid and assist the research scientists.

