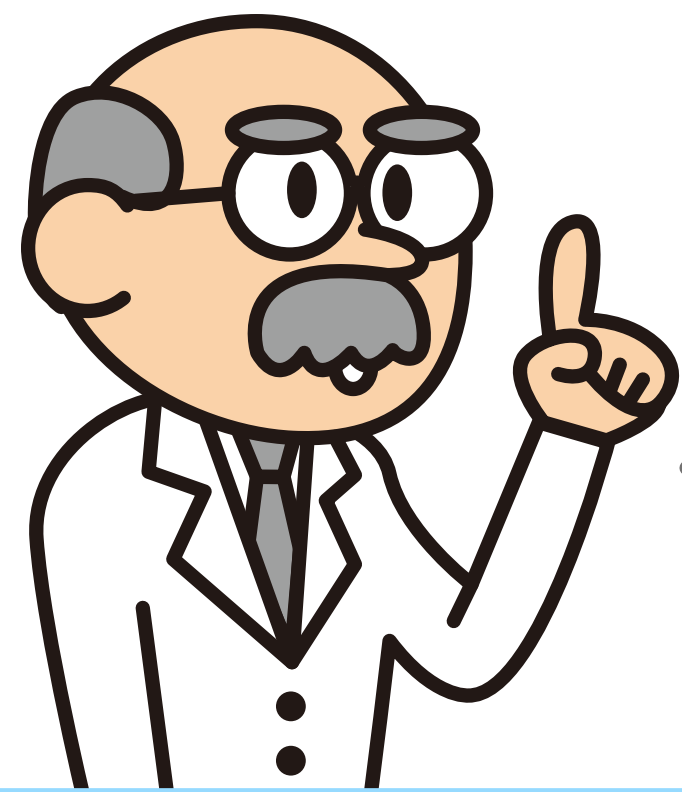


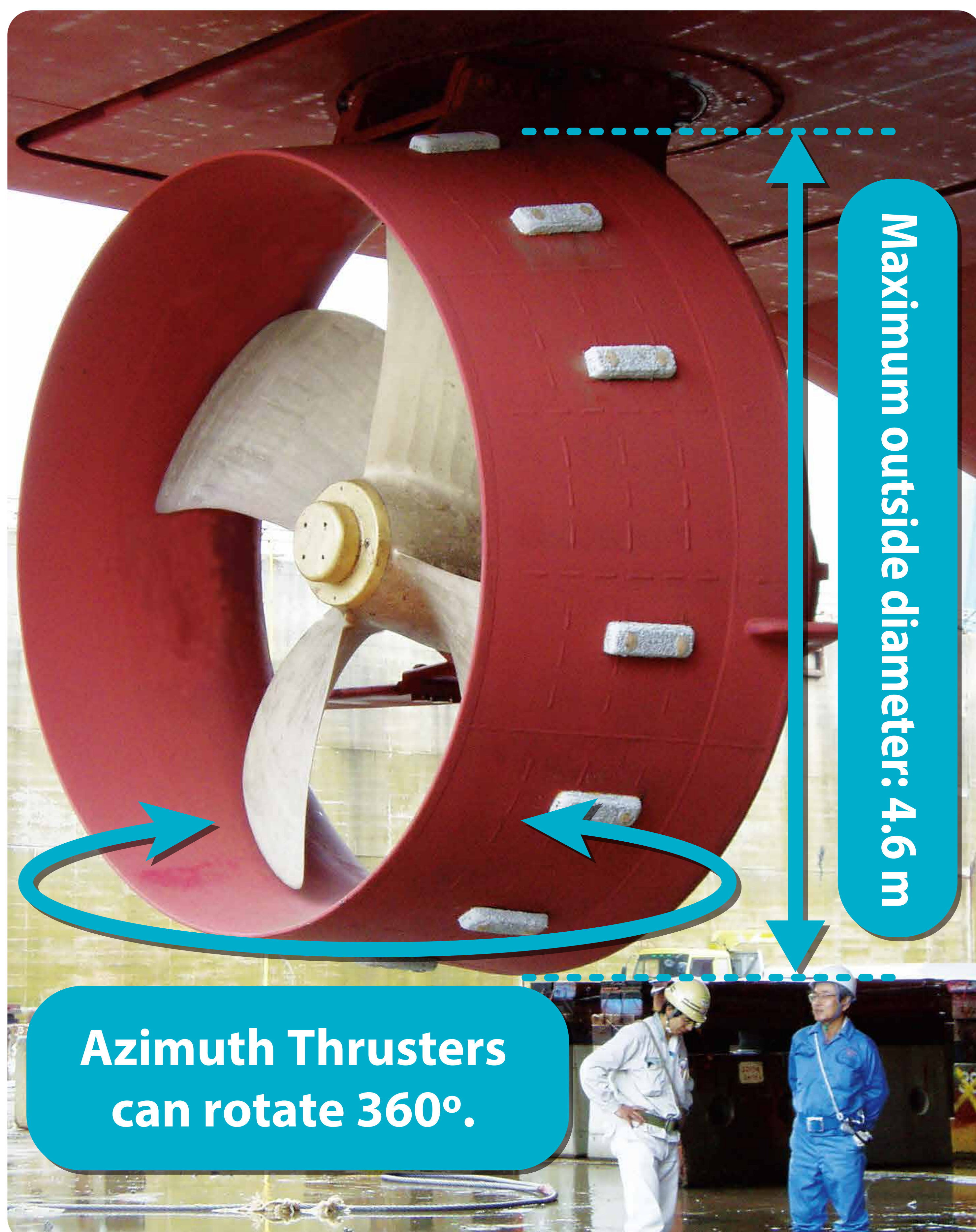
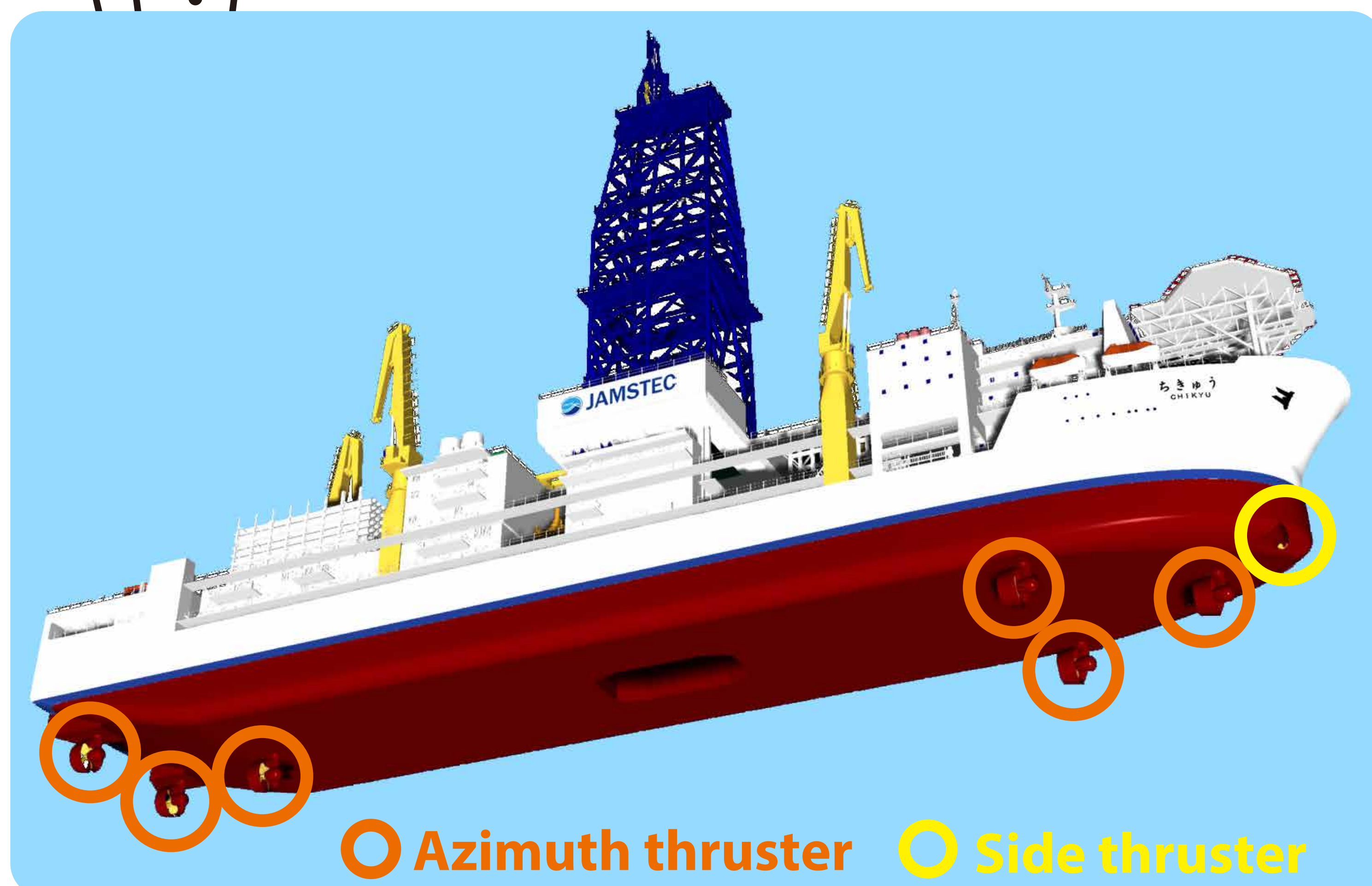
These large propeller pods can rotate 360°

Azimuth thrusters

These large propeller pods can rotate 360°. Each of the 6 azimuth thrusters (4.6 m diameter each) on Chikyu are electrically powered, and work together, with GPS and the Dynamic Positioning System, to keep Chikyu in position, against the influence of ocean currents and winds.



Azimuth means “direction”, while “thruster” is a kind of propeller.



Characteristics

Azimuth thruster (6 each x 4,100 kW)

- ▶ Outside diameter is 4.6 m.
- ▶ Thrusters can rotate 360°.
- ▶ Two azimuth thrusters at *Chikyu's* stern are fixed in position, while the other four can be retracted when *Chikyu* enters port.

Bow Thruster (1 x 2,550 kW)

- ▶ This thruster is used to push *Chikyu's* bow from side to side, usually in port. stern are fixed in position, while the other four can be retracted when *Chikyu* enters port.

Conceptual diagram of azimuth thrusters

