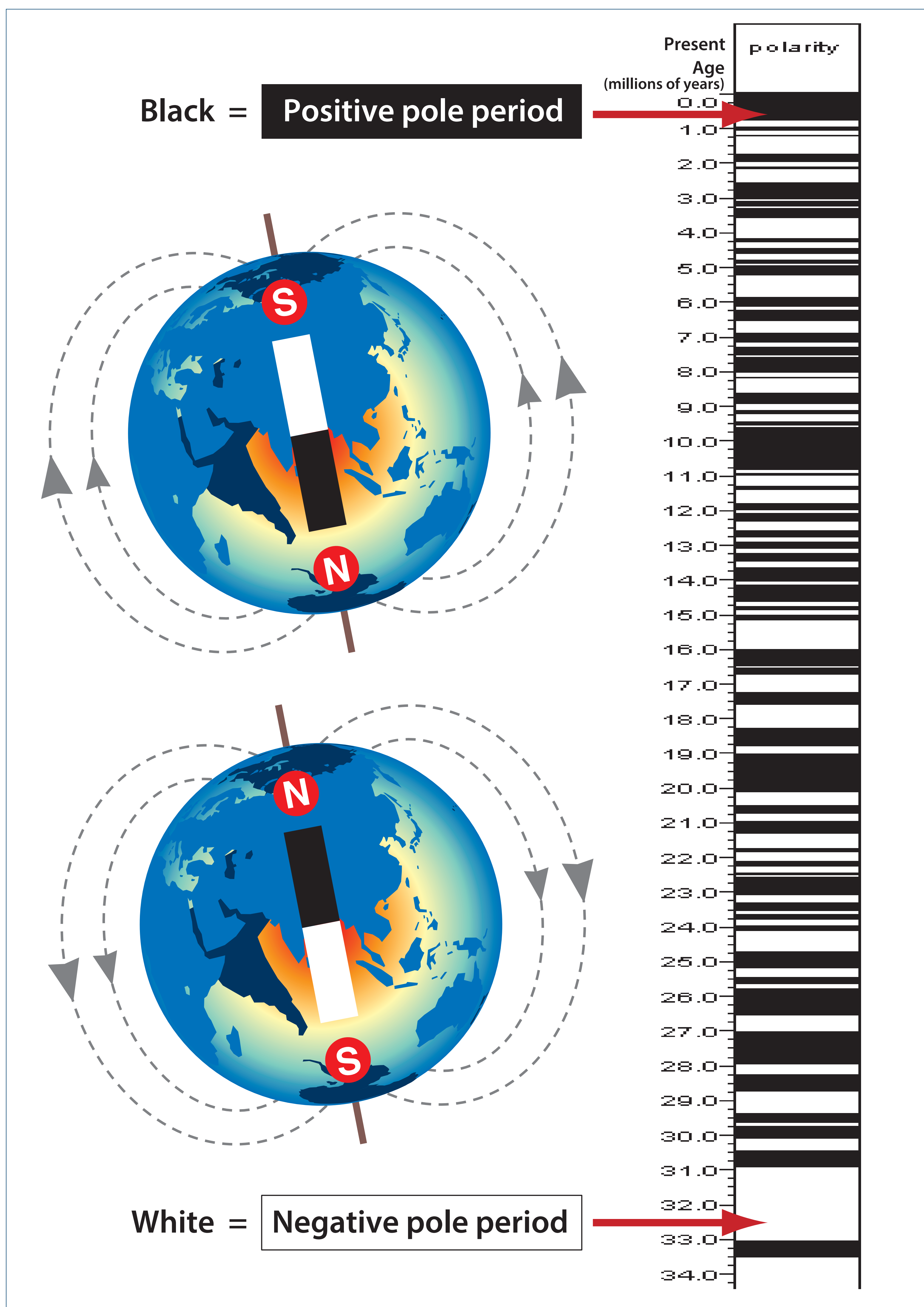


Paleomagnetism laboratory



The geomagnetic field recorded in core samples is measured with a superconducting magnetometer.

During the Earth's history, the geomagnetic field (N and S) has flipped many times in the past. The age of the formation being sampled or cored is estimated from the geomagnetic reversal pattern recorded in the core samples.

Some rocks contain weak magnetic minerals. It suggests the geomagnetic field when rock generated.

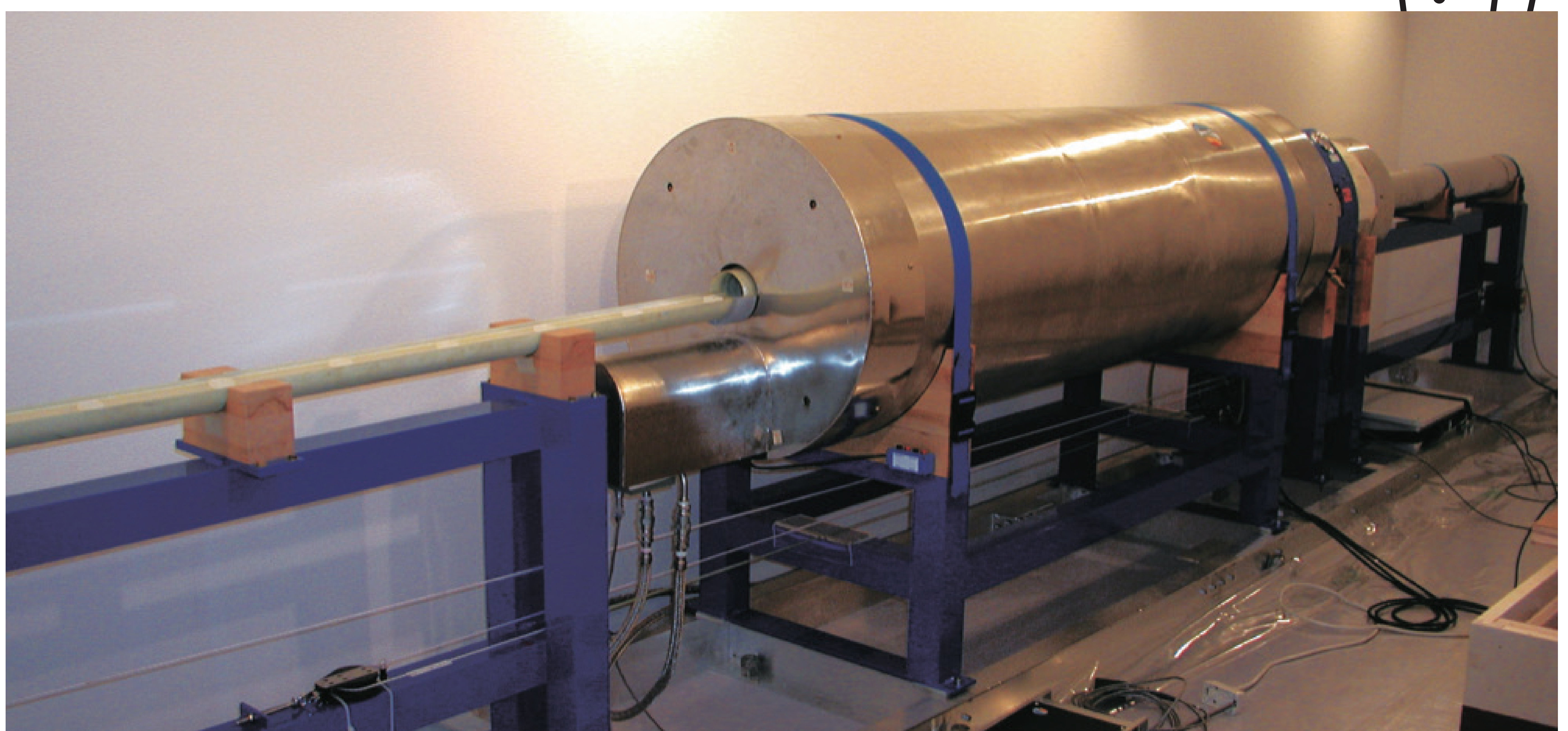
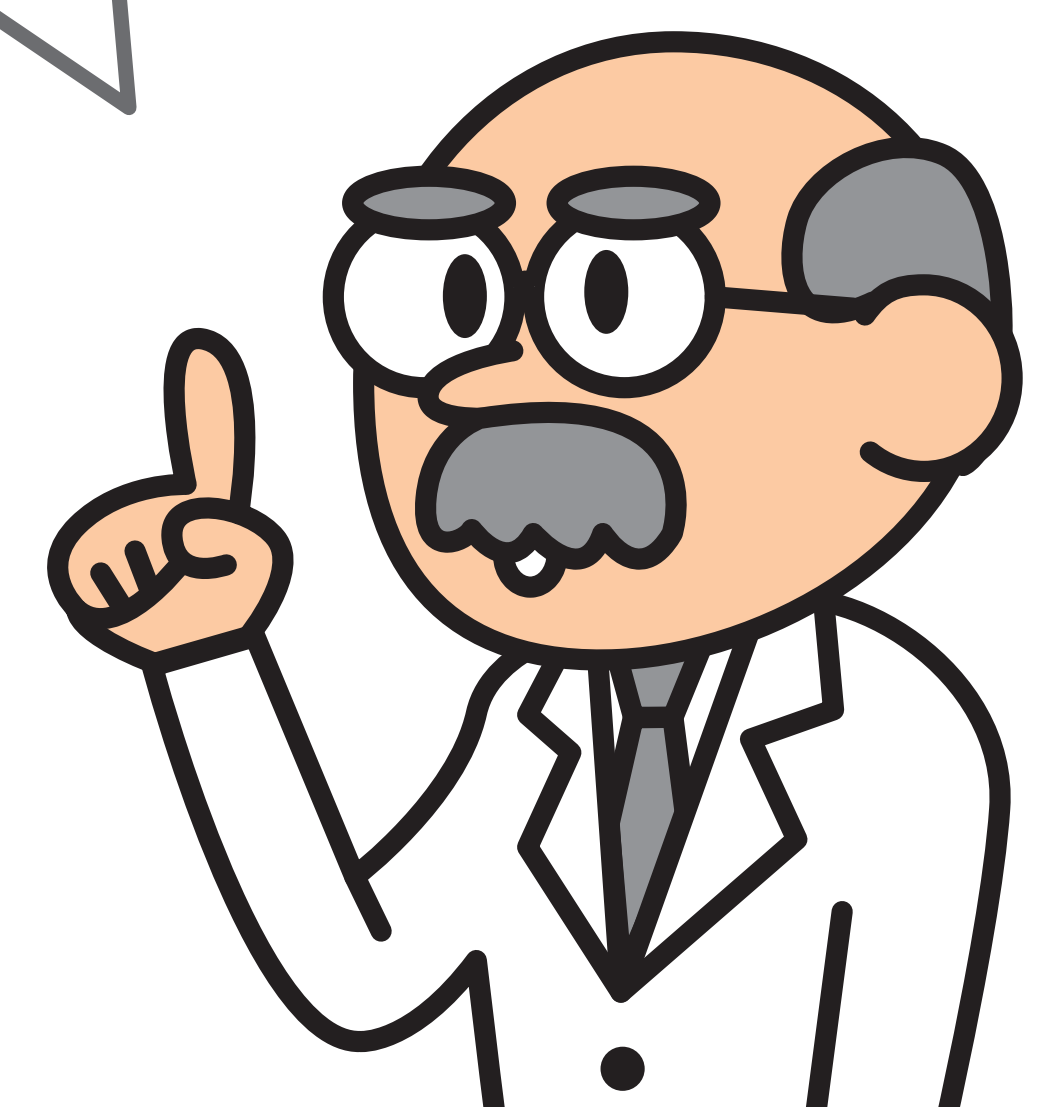


Photo: Pass-through superconducting rock magnetometer