

Parameters

| DLIS Name | Description | Value |
|-----------|------------------------------|-------|
| DO | Depth Offset | 0.0 m |
| DORL | Depth Offset Repeat Analysis | 0.0 m |

PIP SUMMARY

- + ARC Gamma Ray Samples
- + Gamma-Ray Samples

Rate of Penetration, Averaged over Last
5ft (ROP5_RM)

100 (M/HR) 0

Borehole Corrected Gamma Ray
(MWD_GR_BHC)

0 (GAPI) 200

ARC Gamma Ray (GR_ARC)

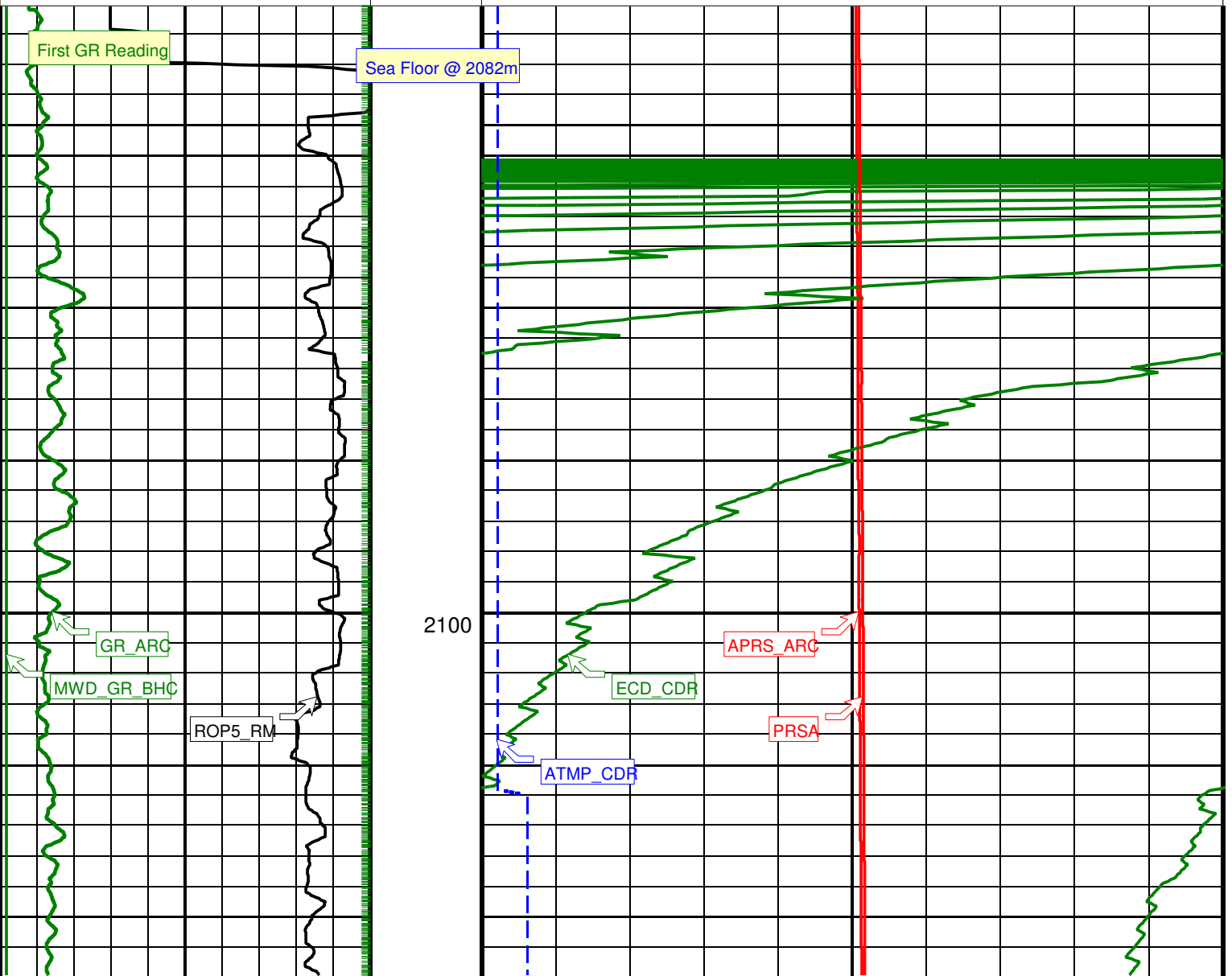
0 (GAPI) 200

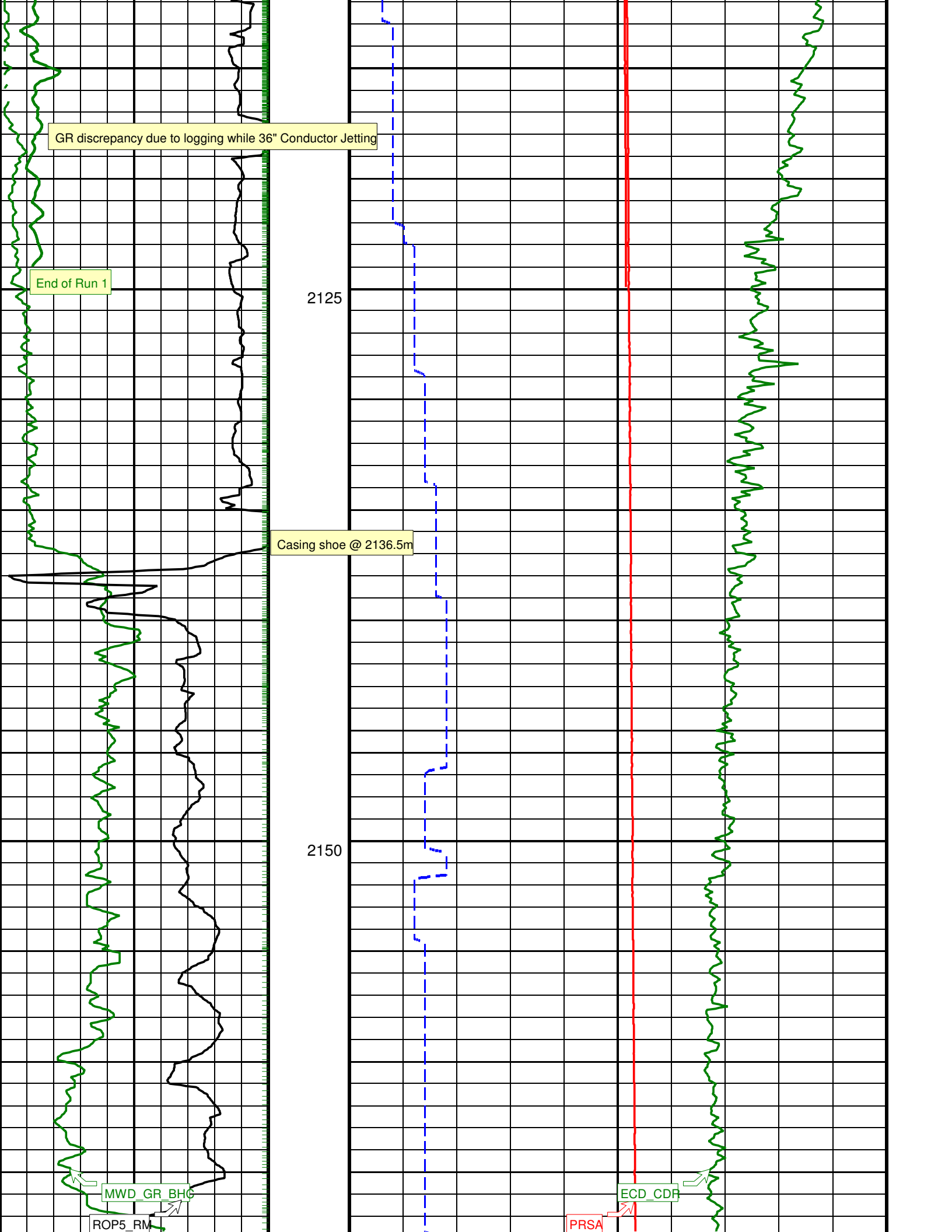
Annular Temperature (ATMP_CDR)
(DEGC) 0 50

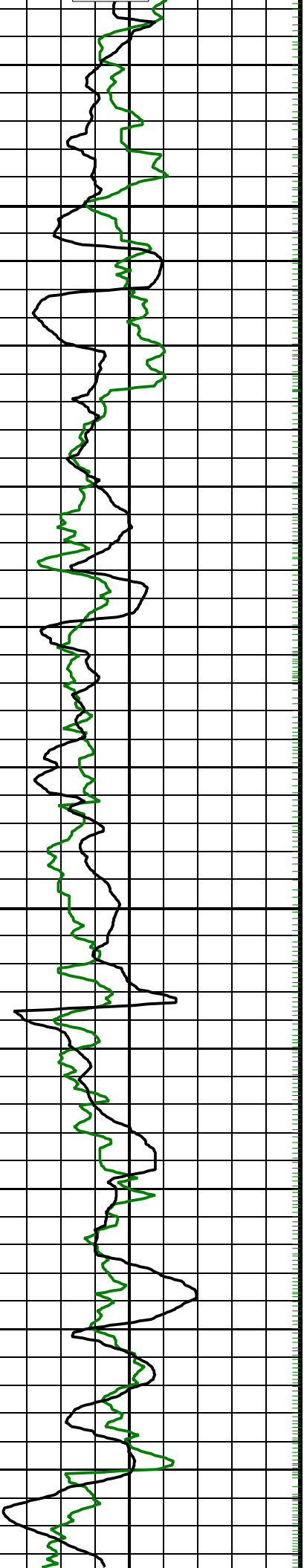
Annular Pressure (PRSA)
(PSI) 0 6000

Equivalent Circulating Density (ECD_CDR)
(SG) 0 2

Annulus Pressure (APRS_ARC)
(PSI) 0 6000





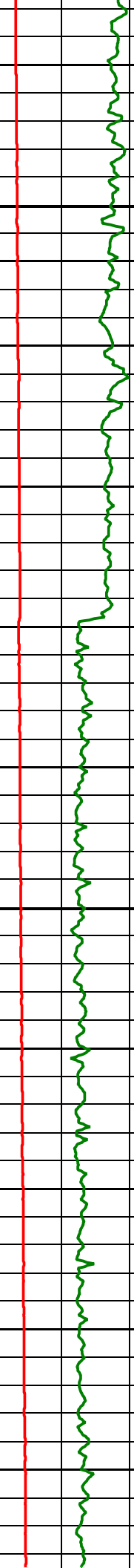
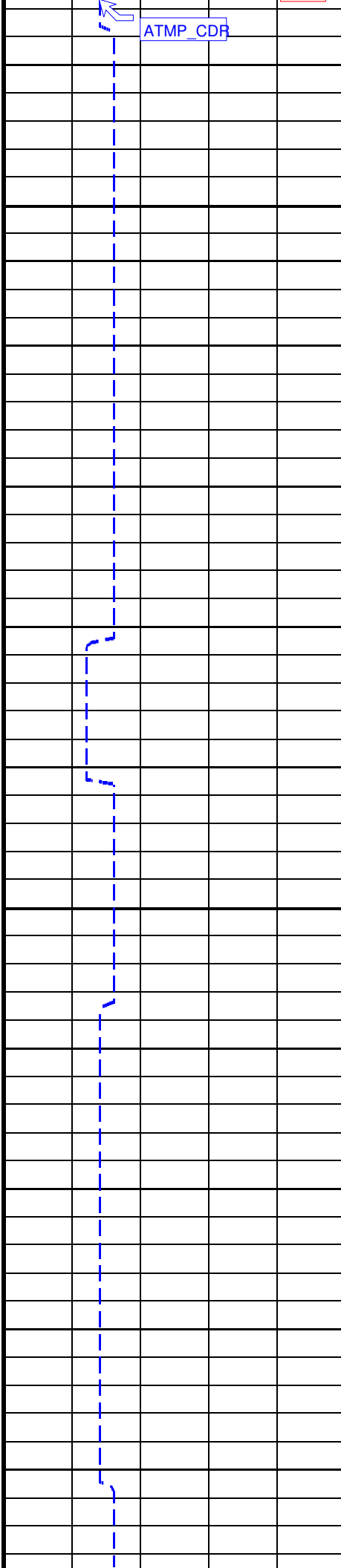


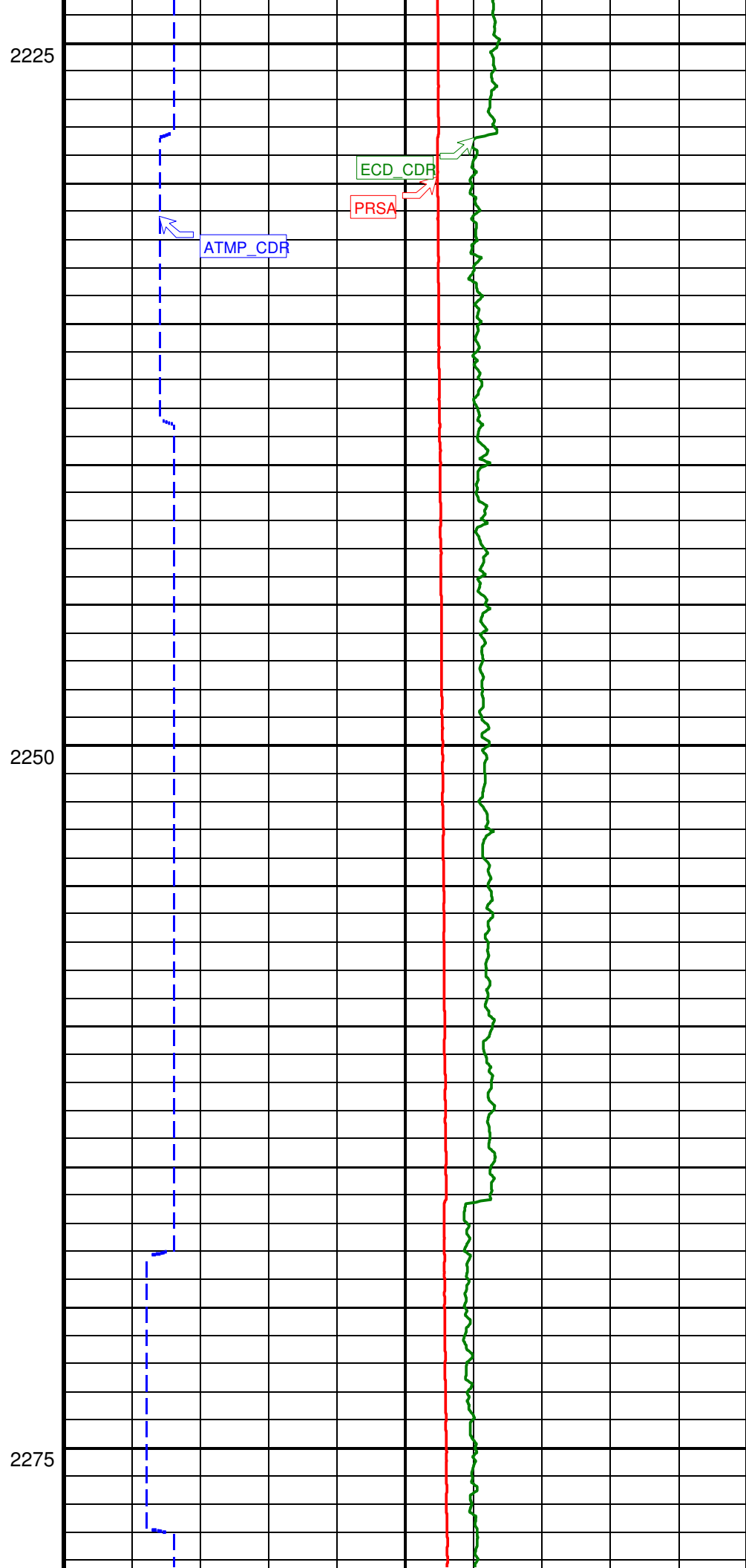
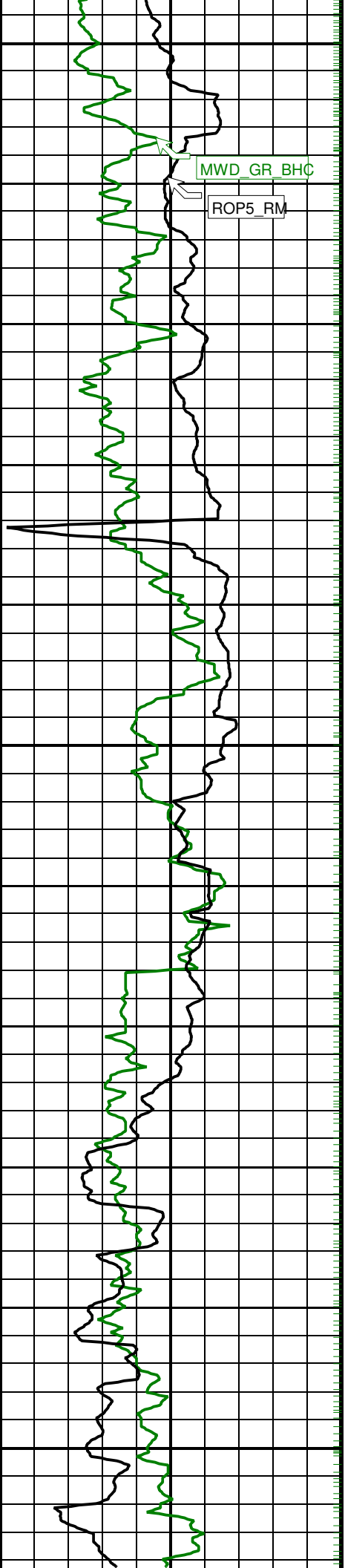
2175

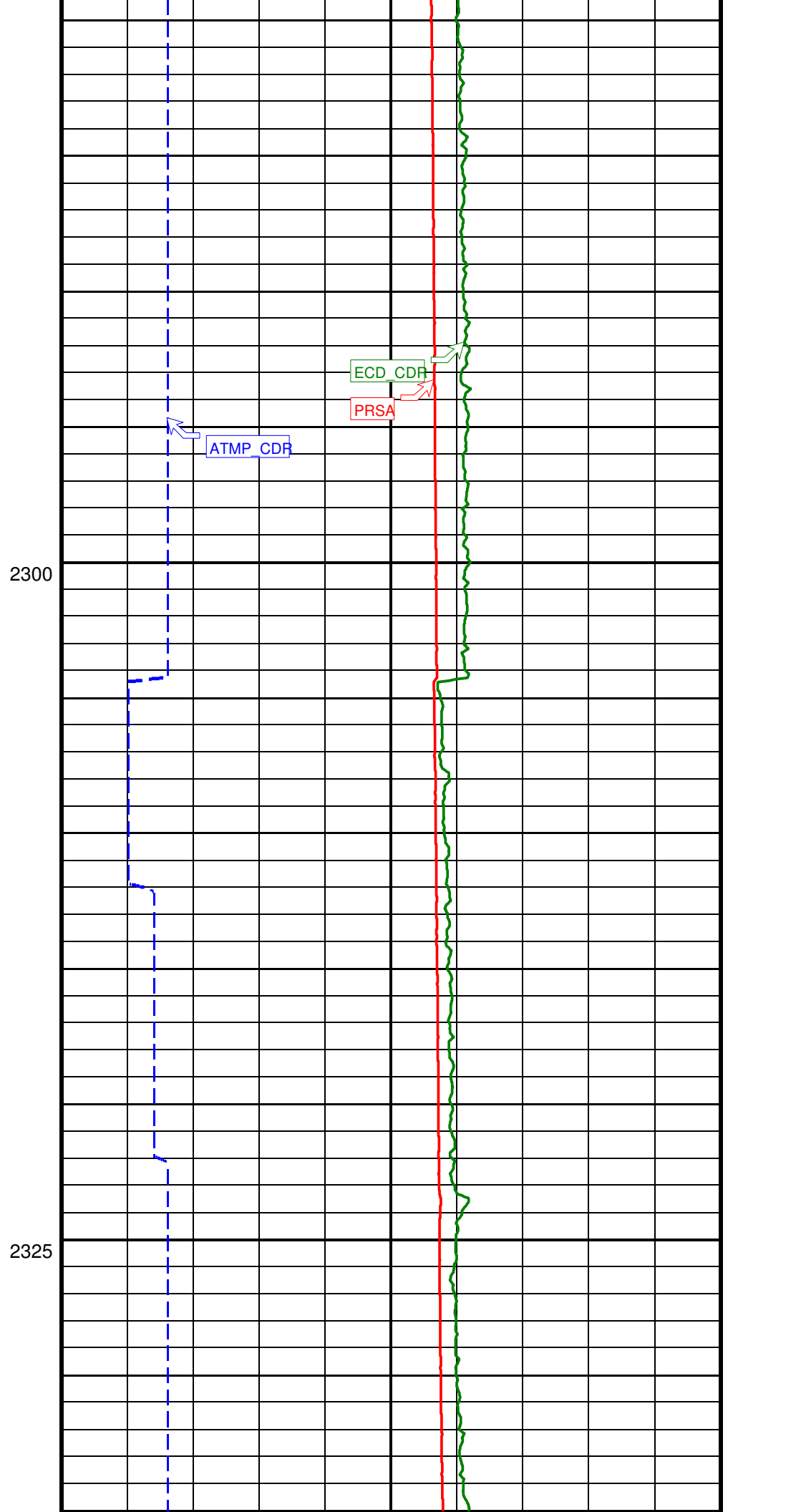
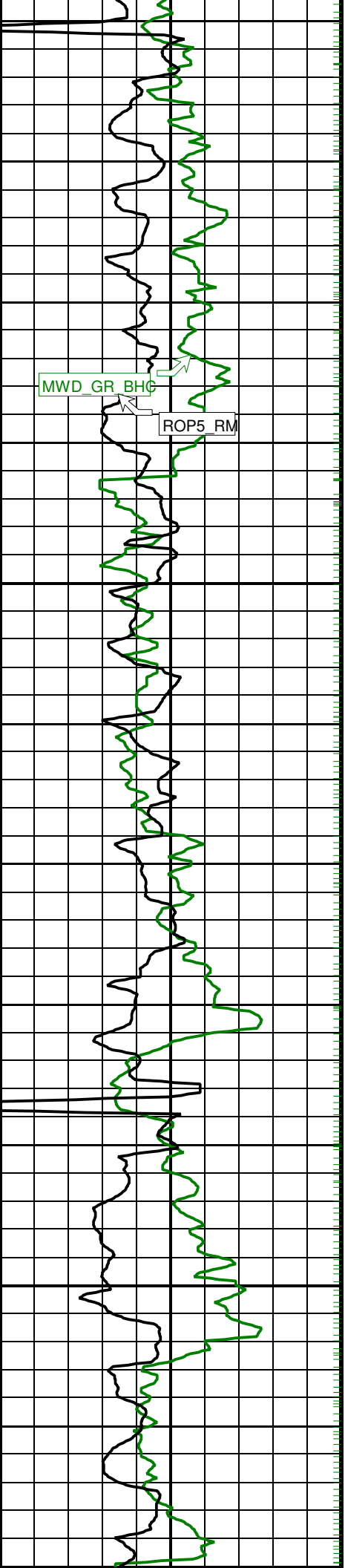
2200

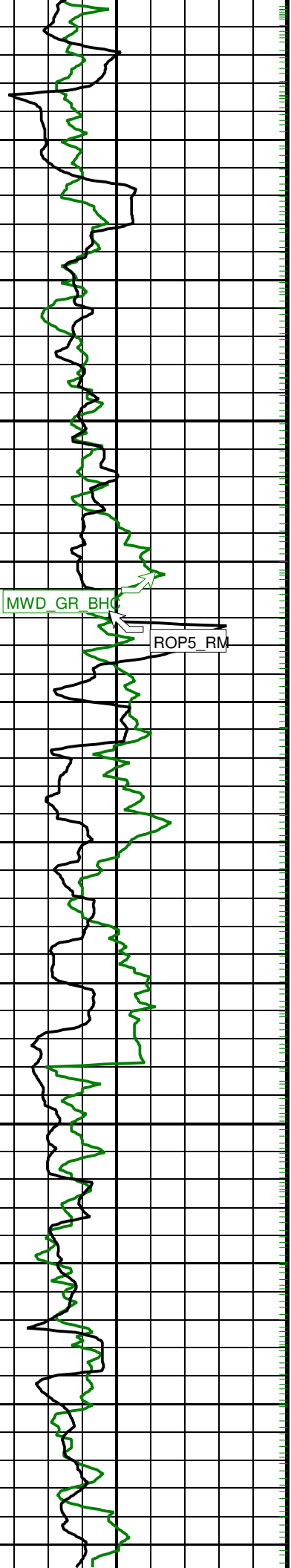


ATMP_CDR



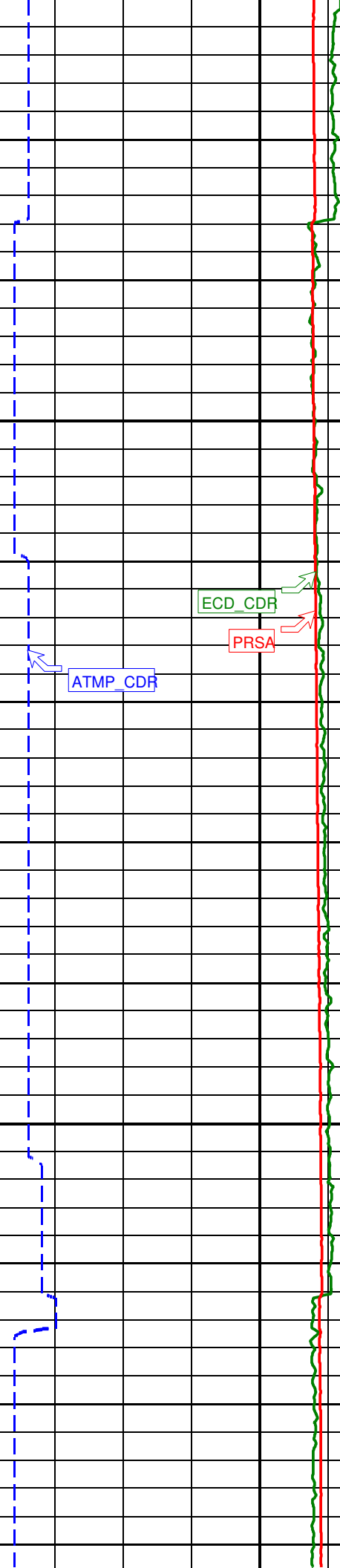






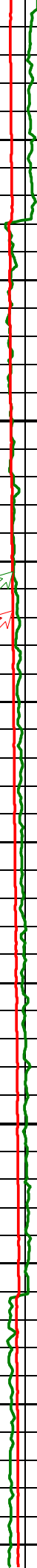
2350

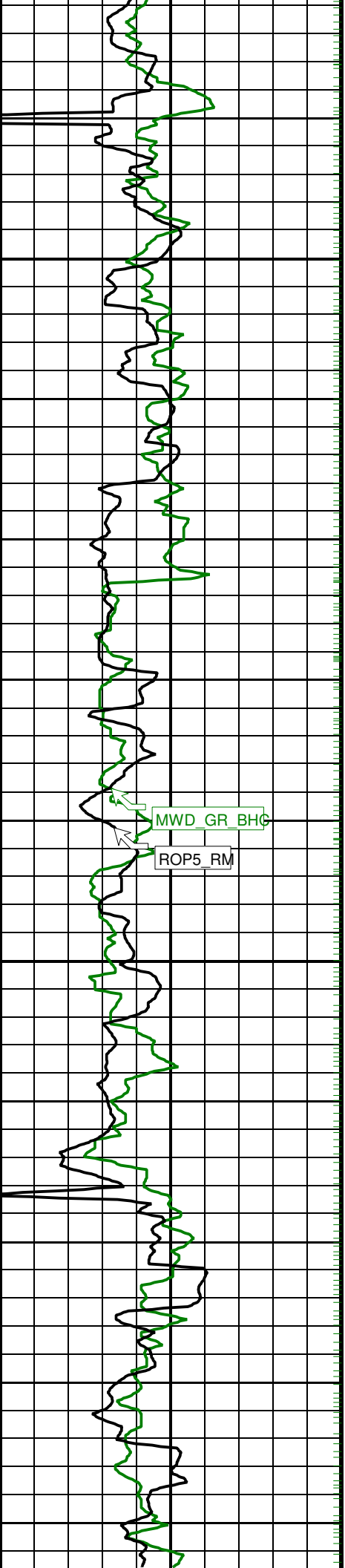
2375

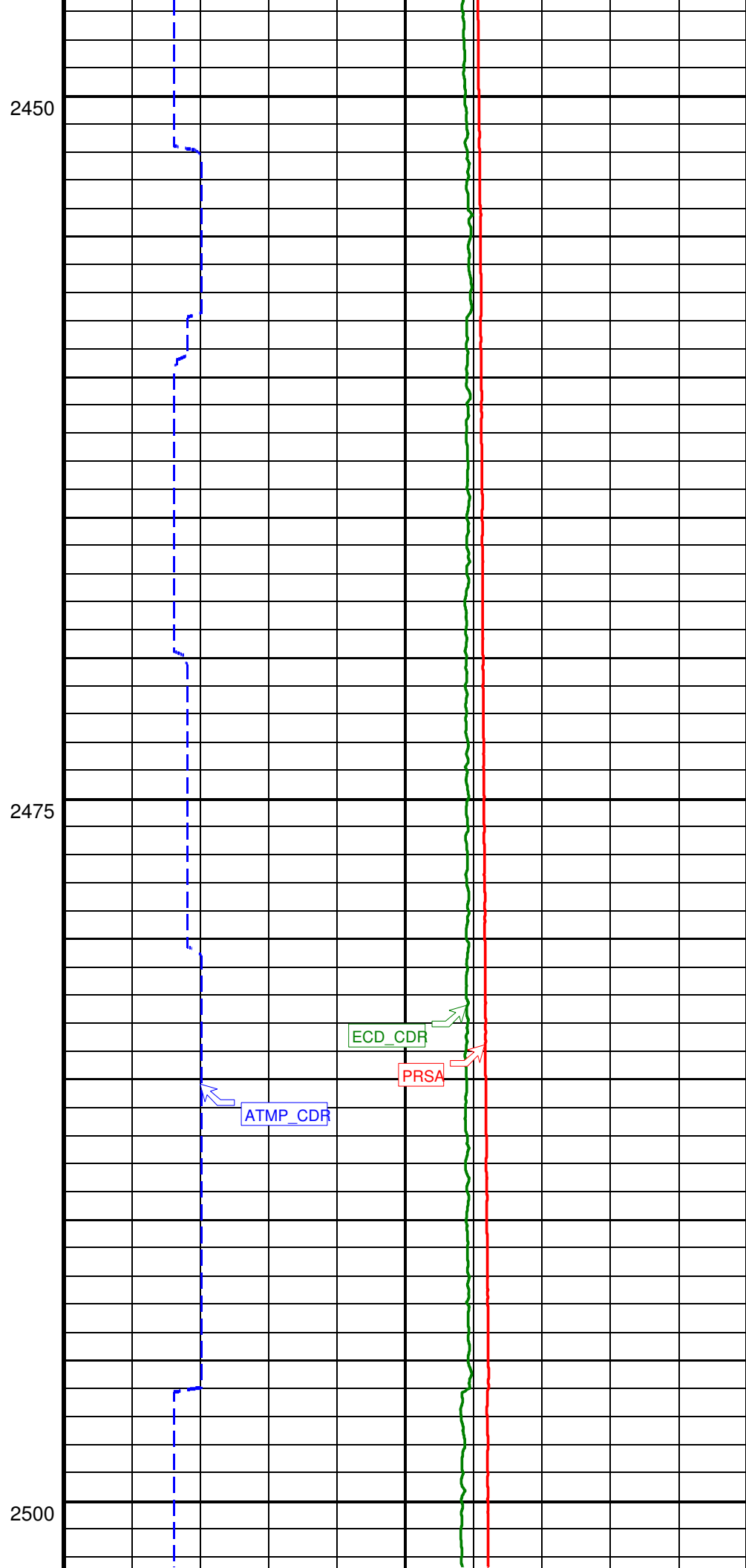
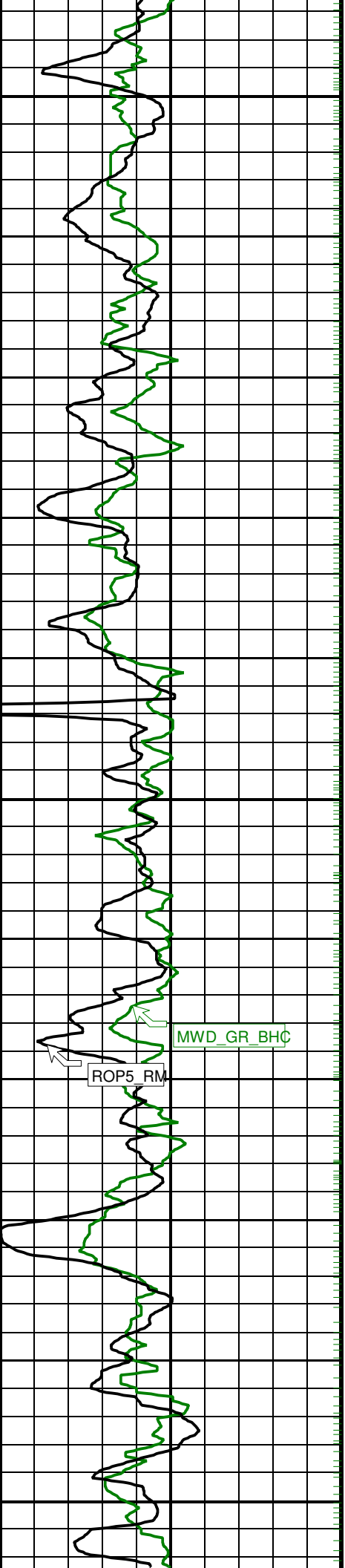


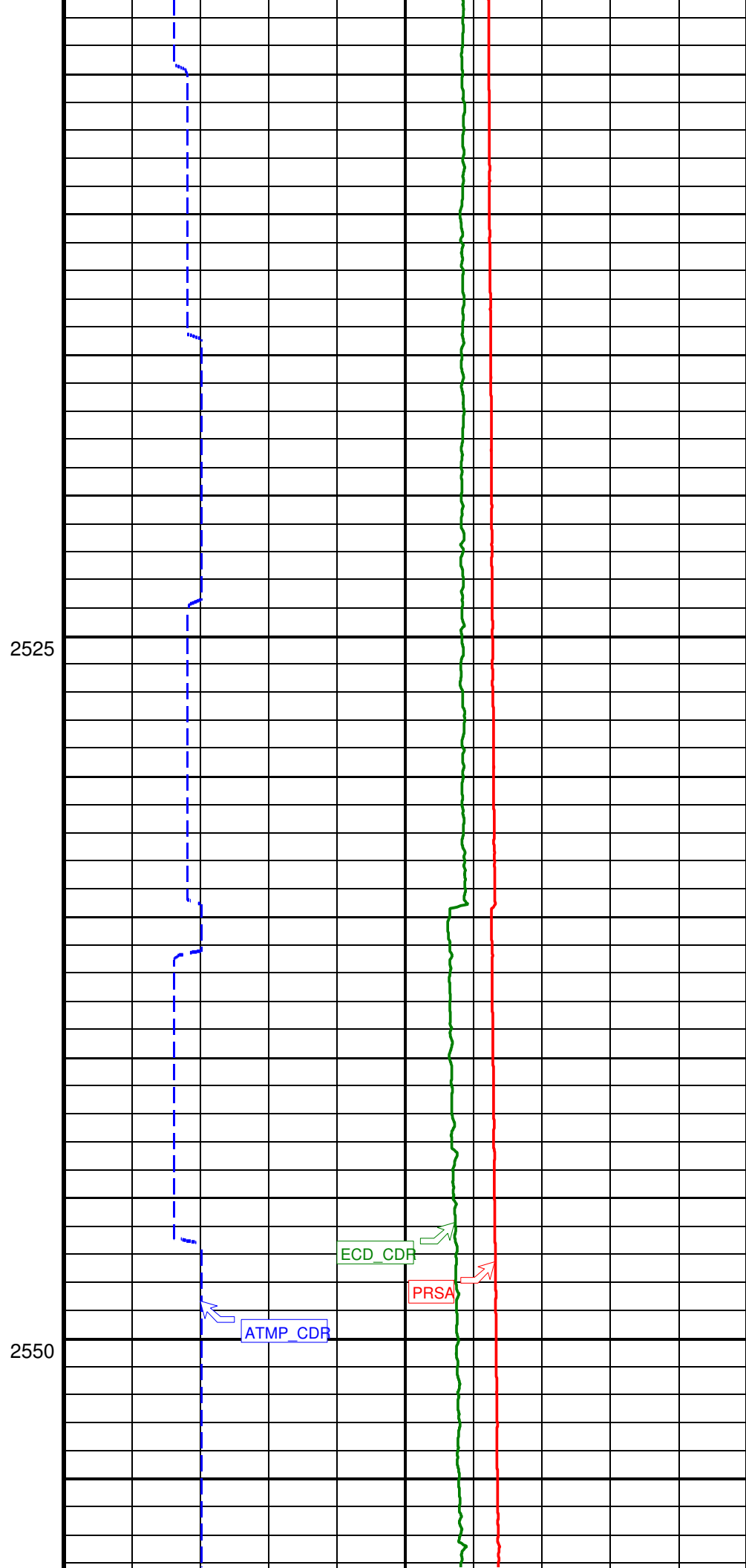
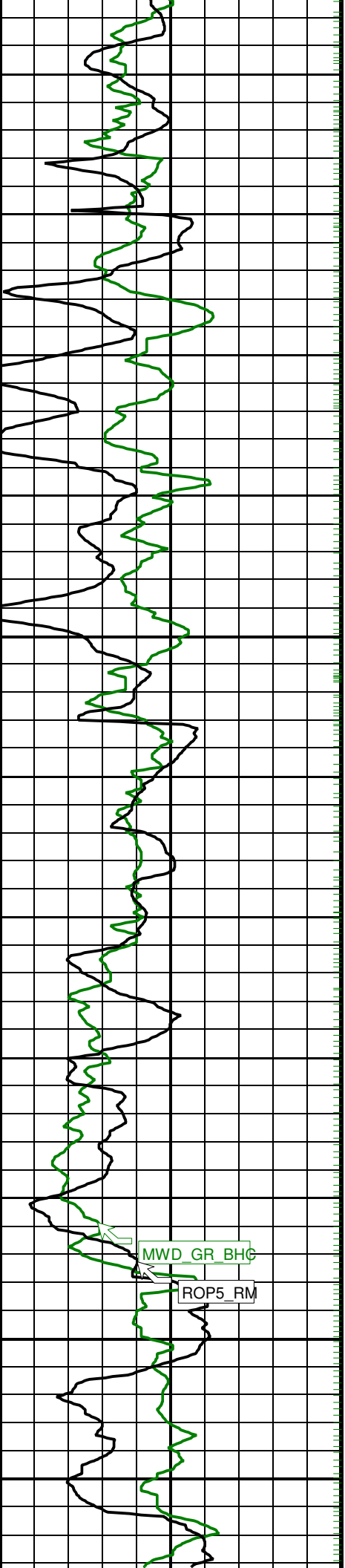
ECD_CDR
PRSA

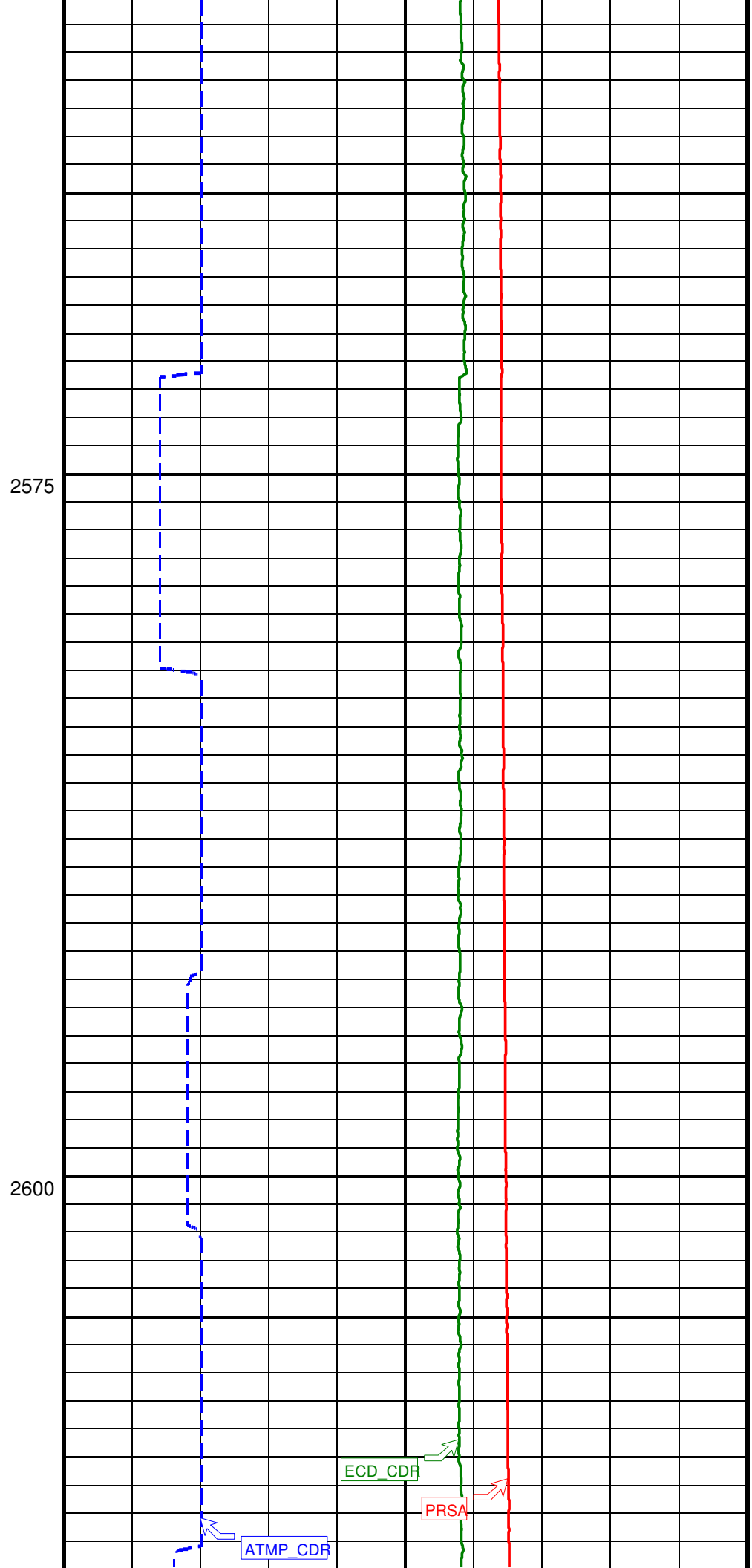
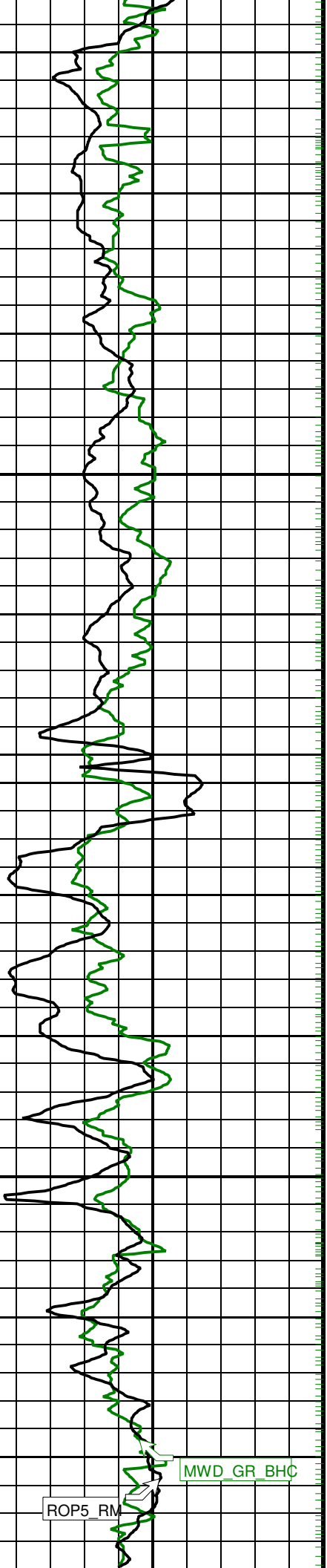
ATMP_CDR

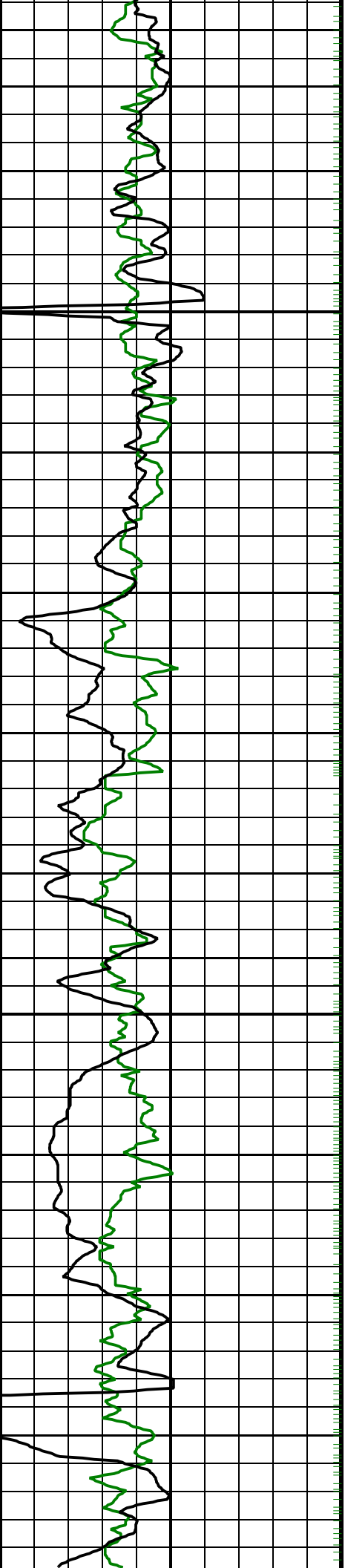






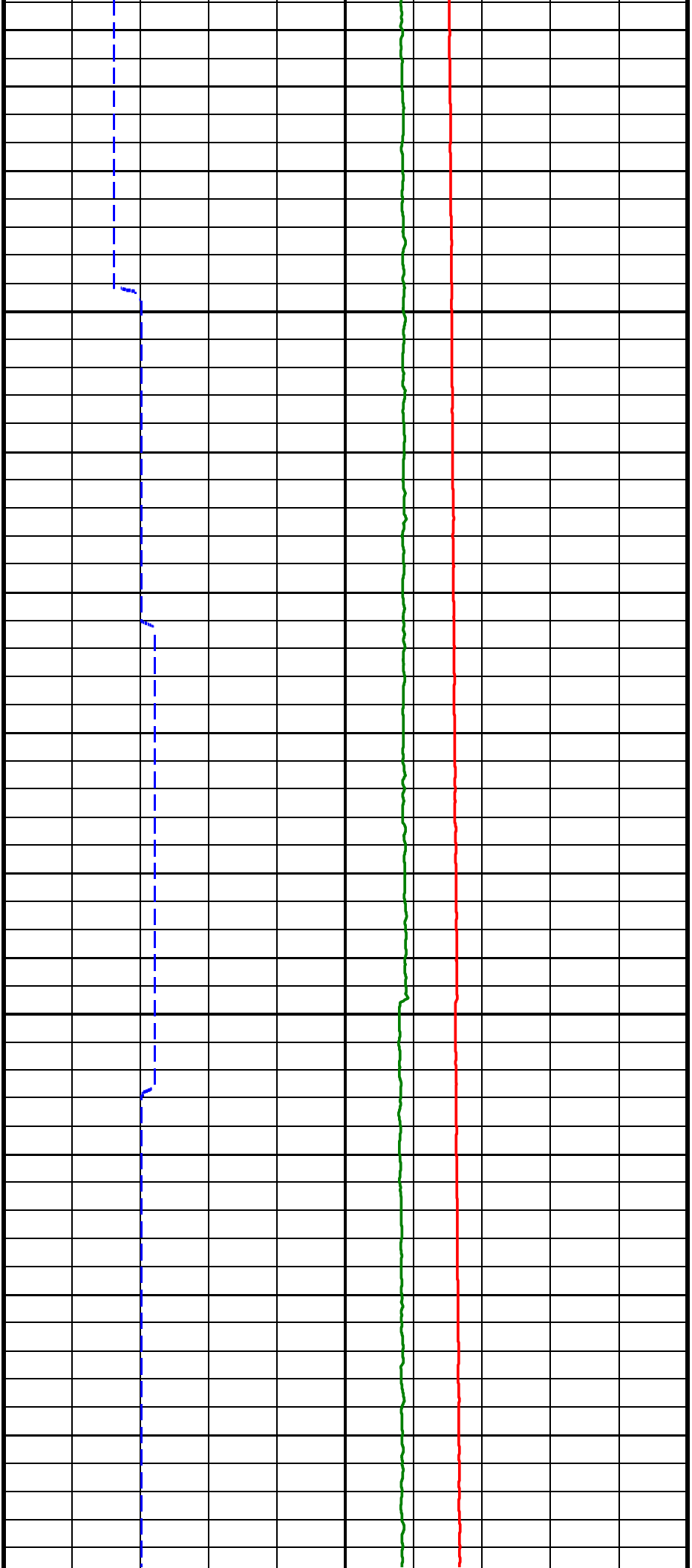


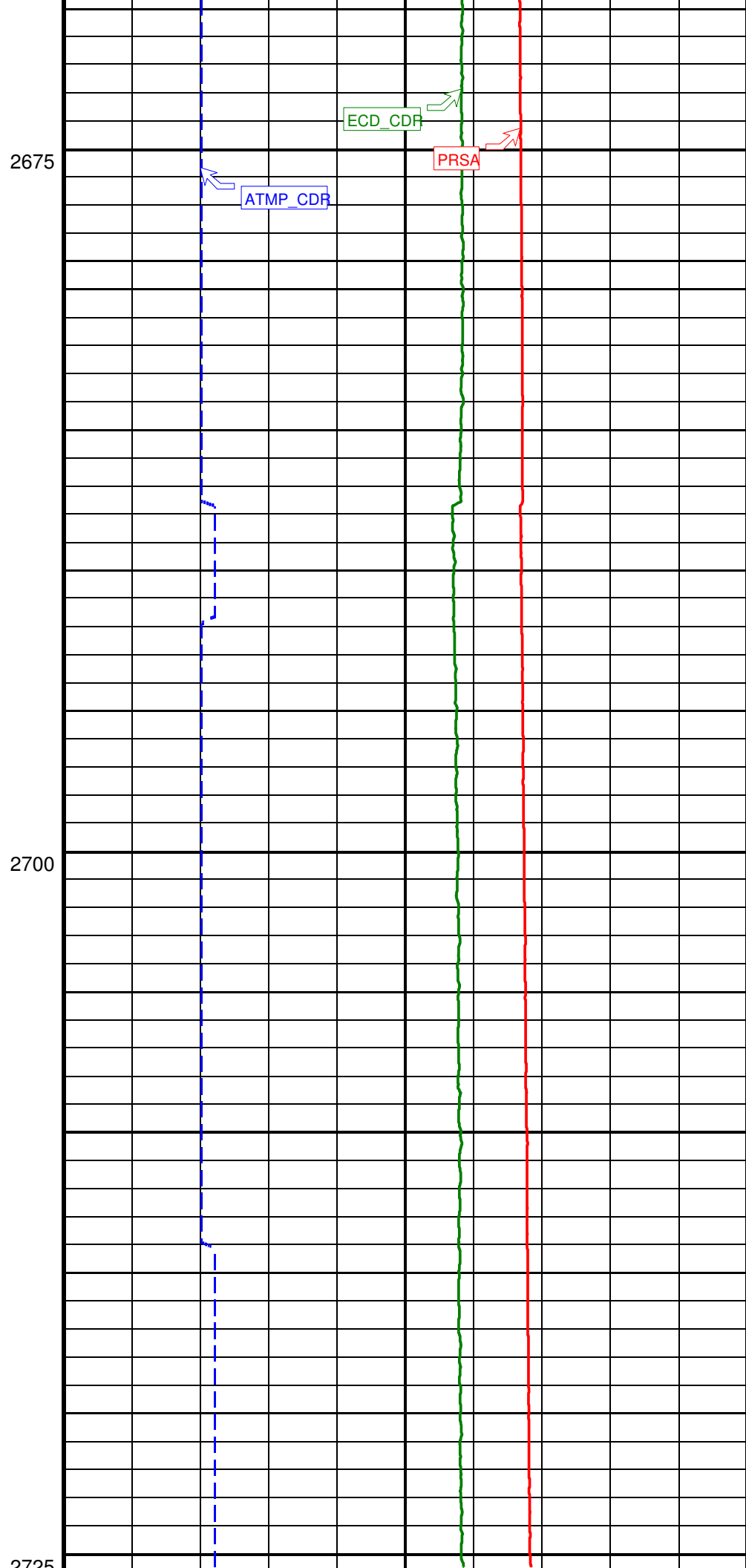
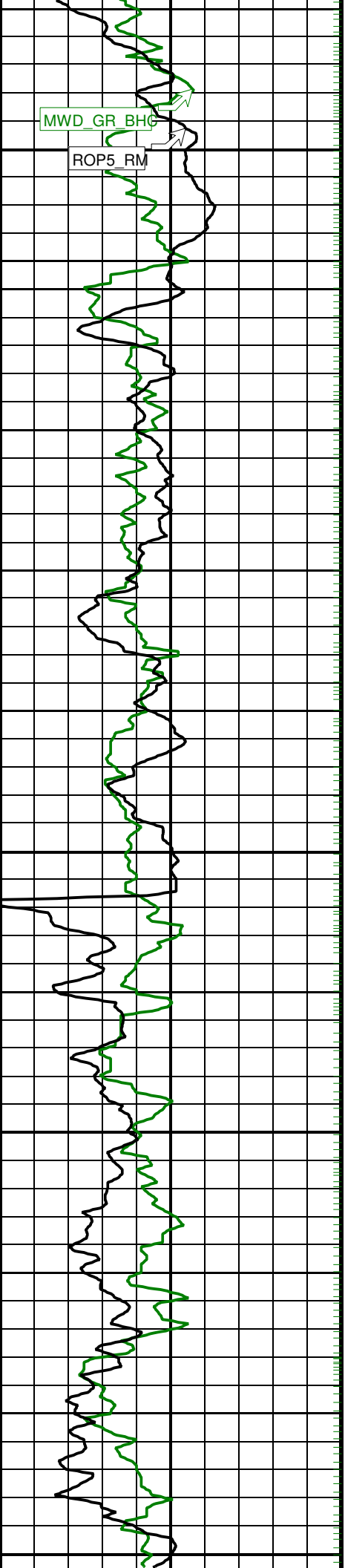


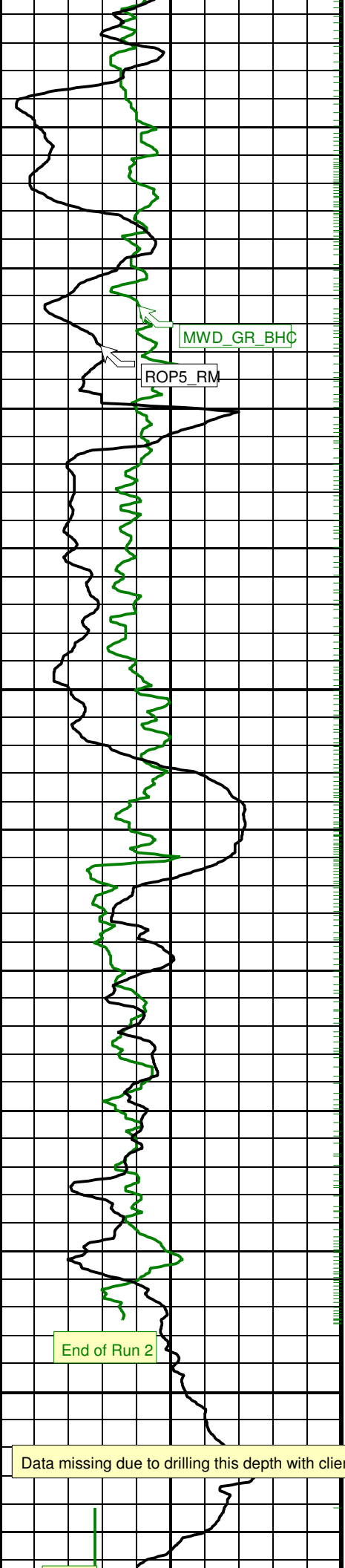


2625

2650





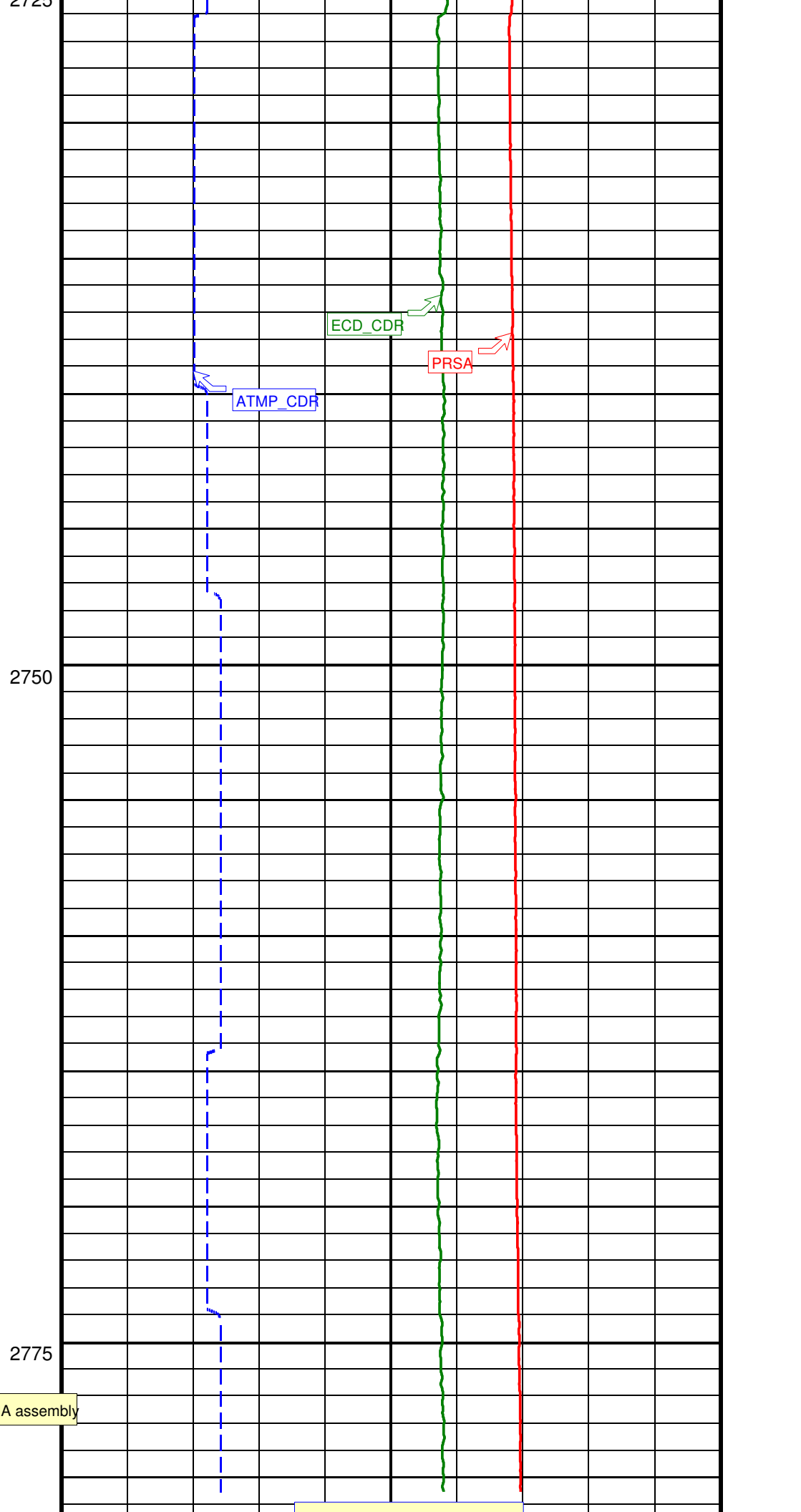


MWD_GR_BHC

ROP5_RM

End of Run 2

Data missing due to drilling this depth with client BHA assembly



ECD_CDR

ATMP_CDR

PRSA

2750

2775

2725

Run 3

Last Temp/APWD/ECD Readings

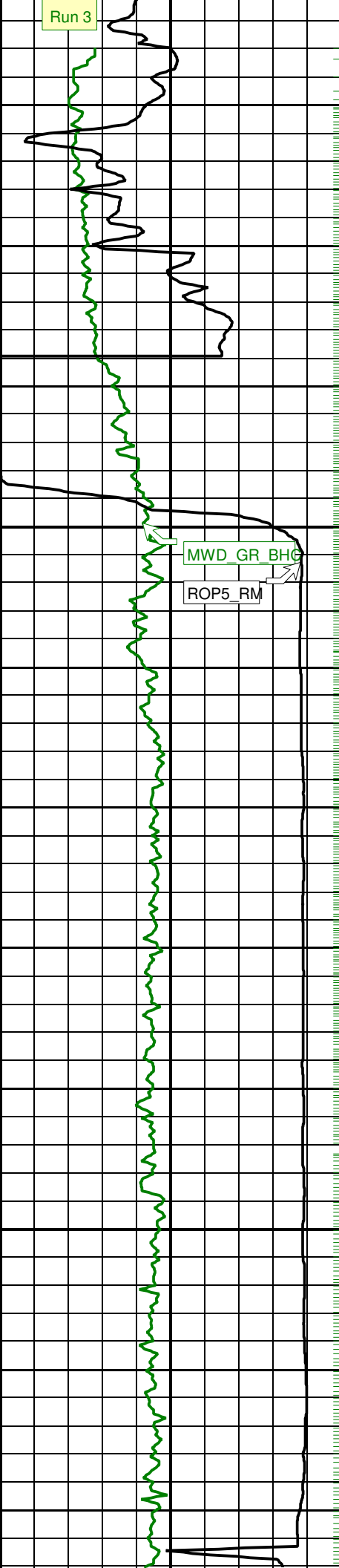
Casing shoe @ 2786.2m

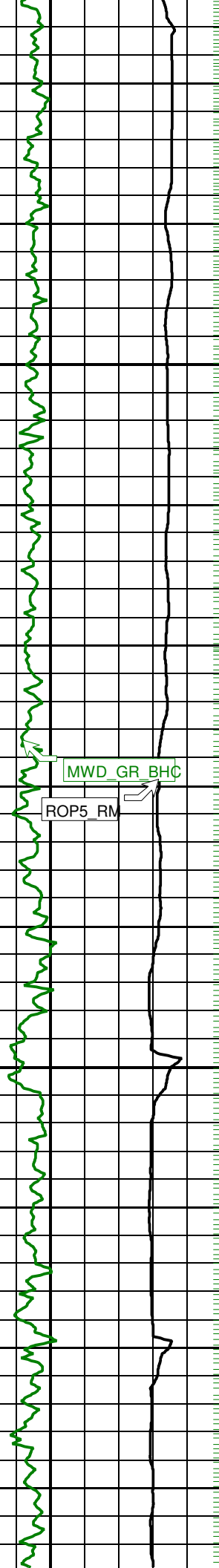
MWD GR BHC

ROP5_RM

2800

2825



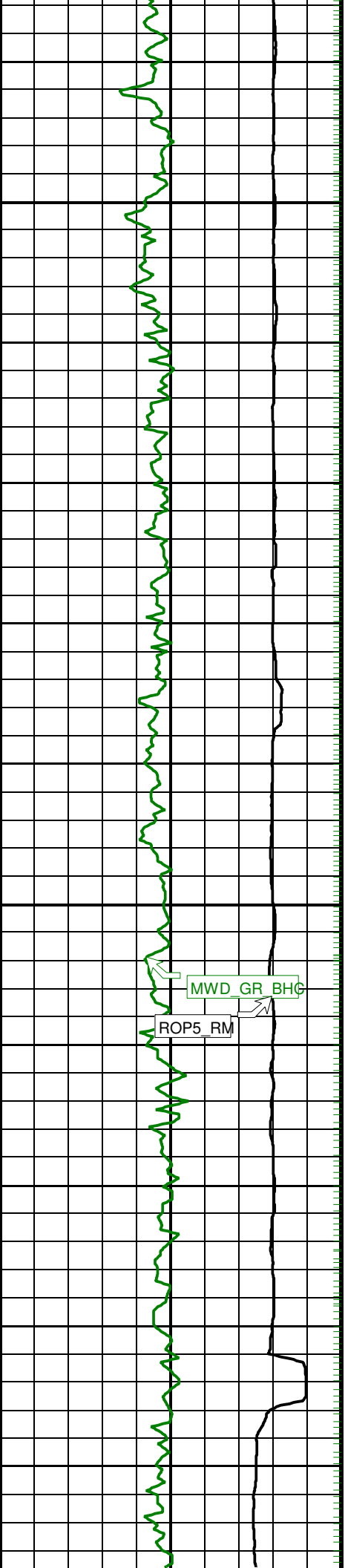


2850

MWD GR BHÇ

ROP5_RM

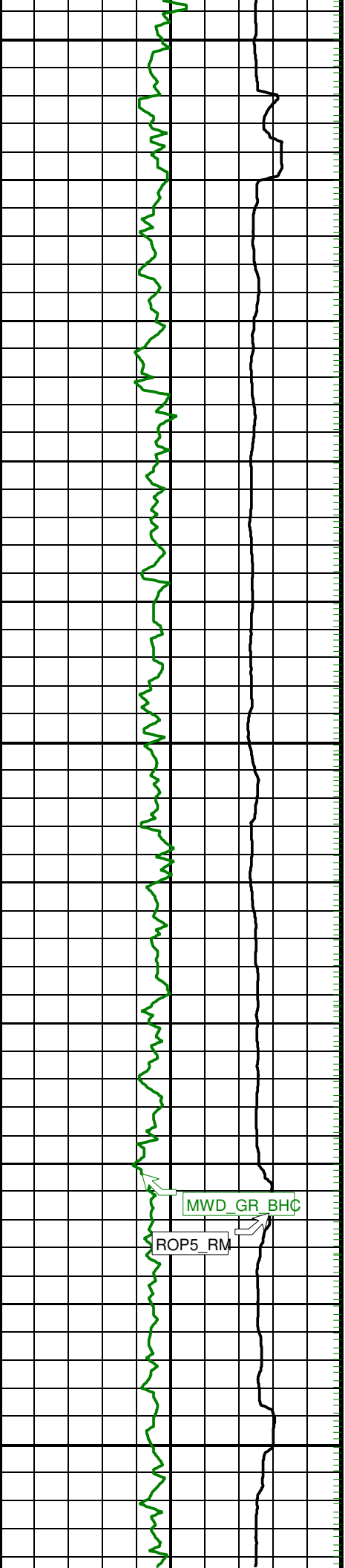
2875



2900

2925

MWD GR BHG
ROP5_RM



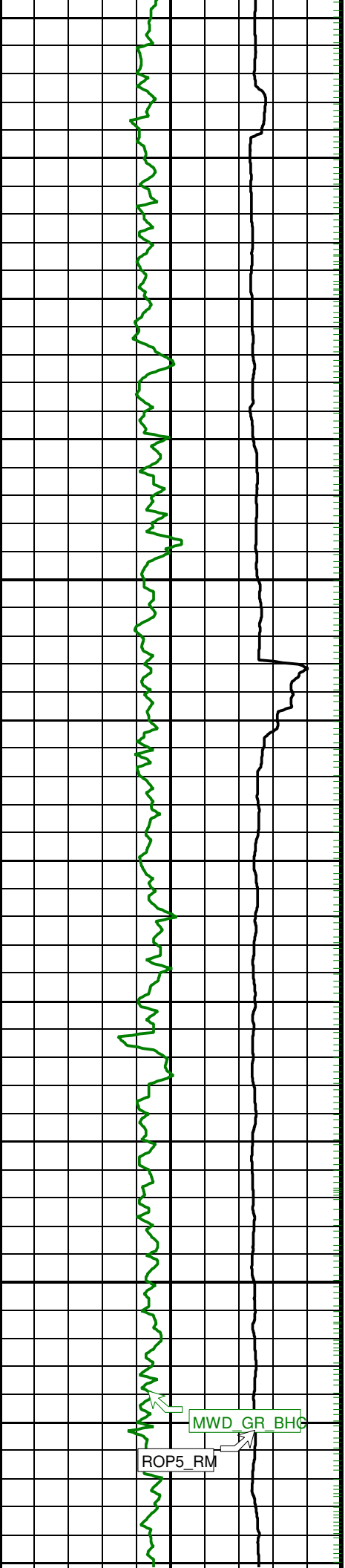
2950

2975

3000

MWD_GR_BHC

ROP5_RM

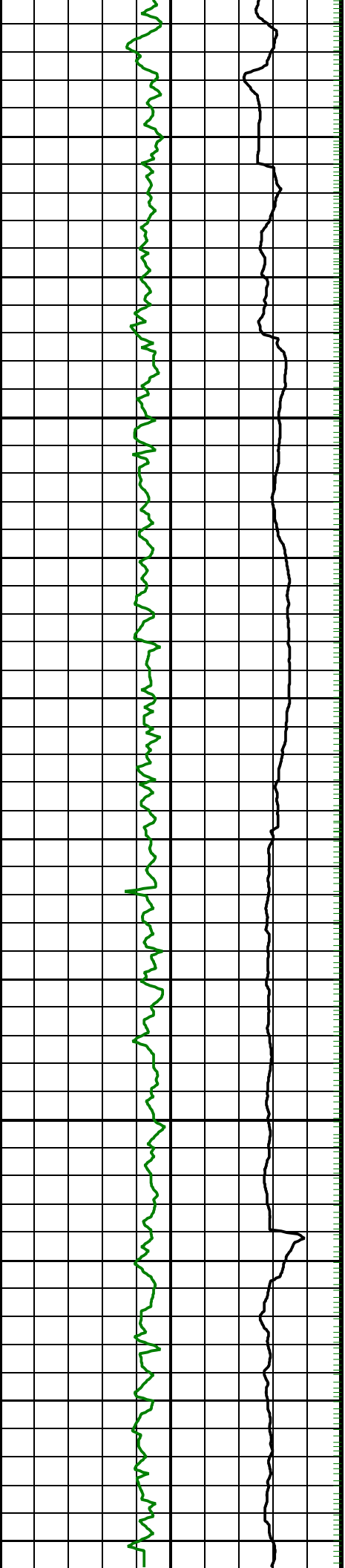


3025

3050

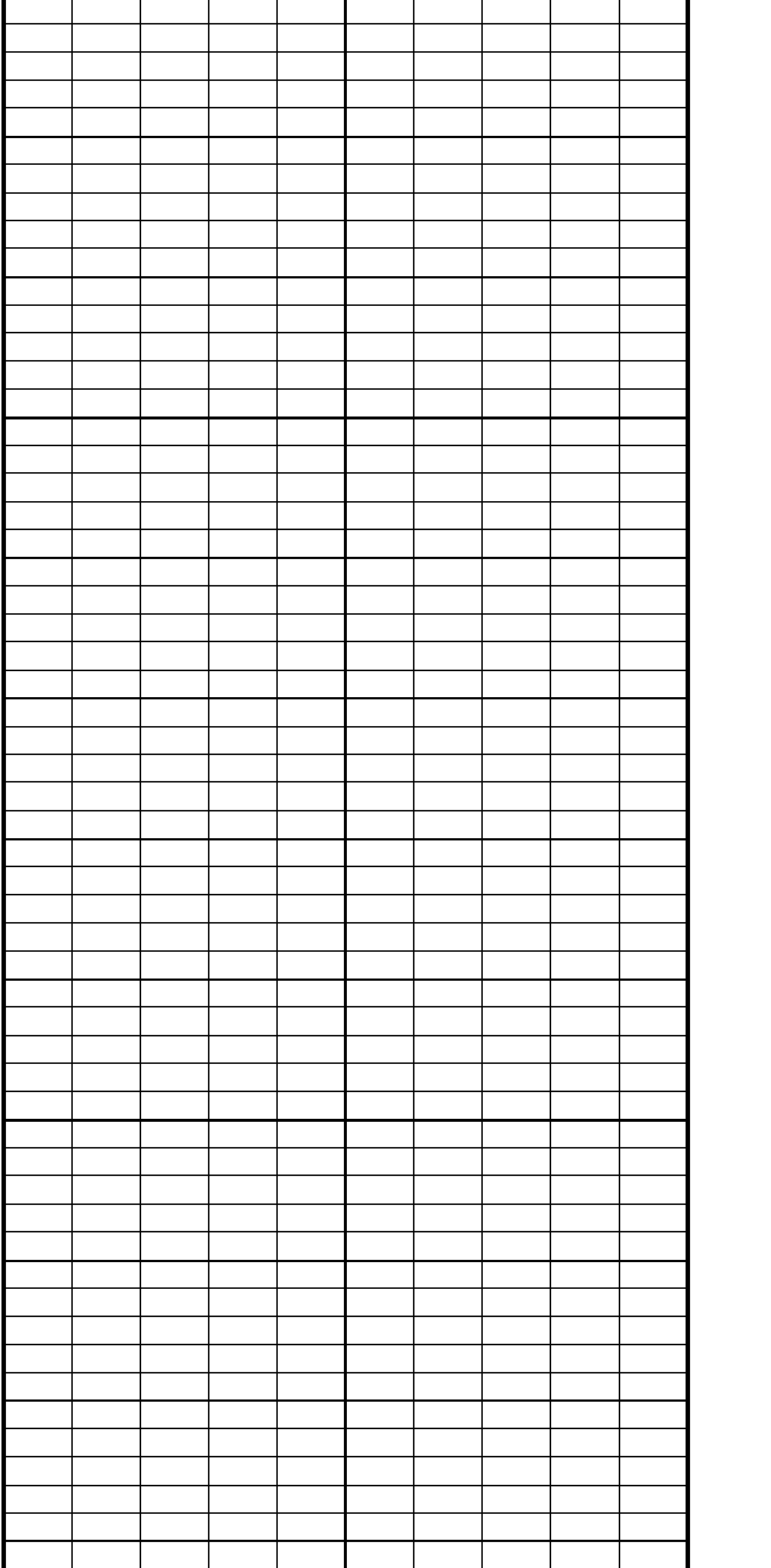
MWD GR BHG

ROP5_RM



3075

3100

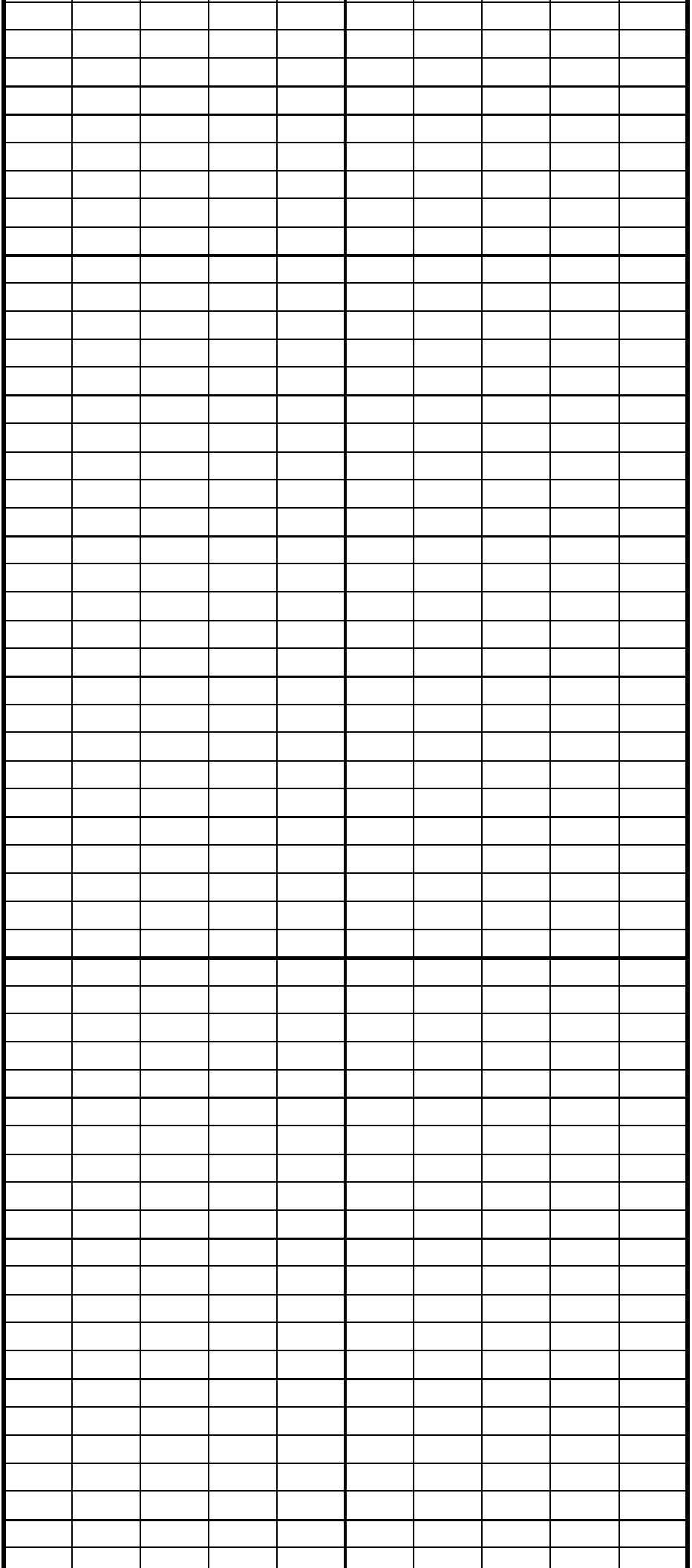
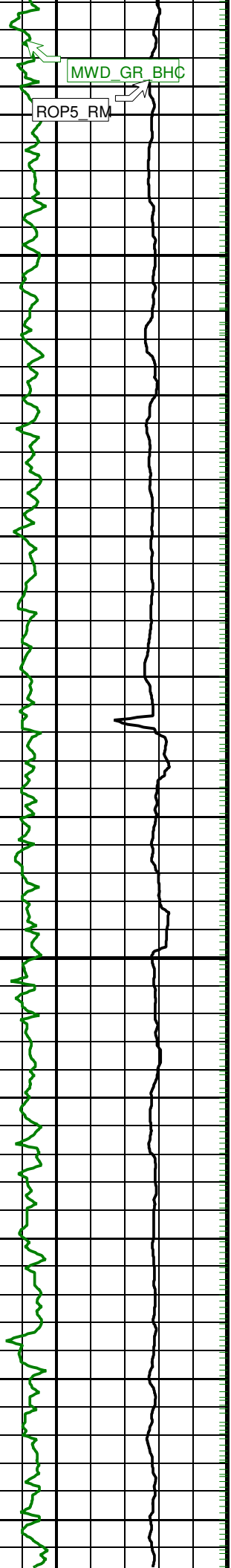


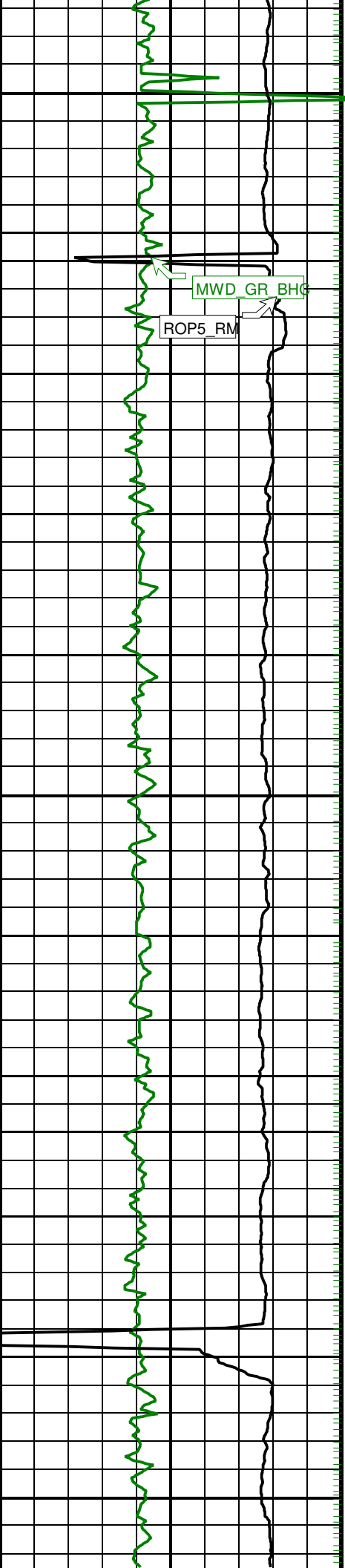
MWD GR BHÇ

ROP5 RM

3125

3150

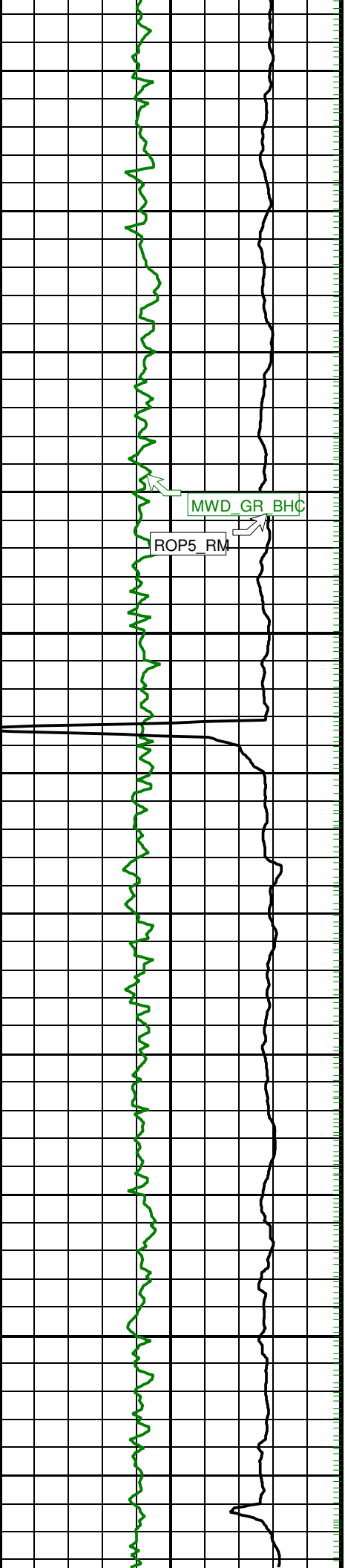




3175

3200

3225

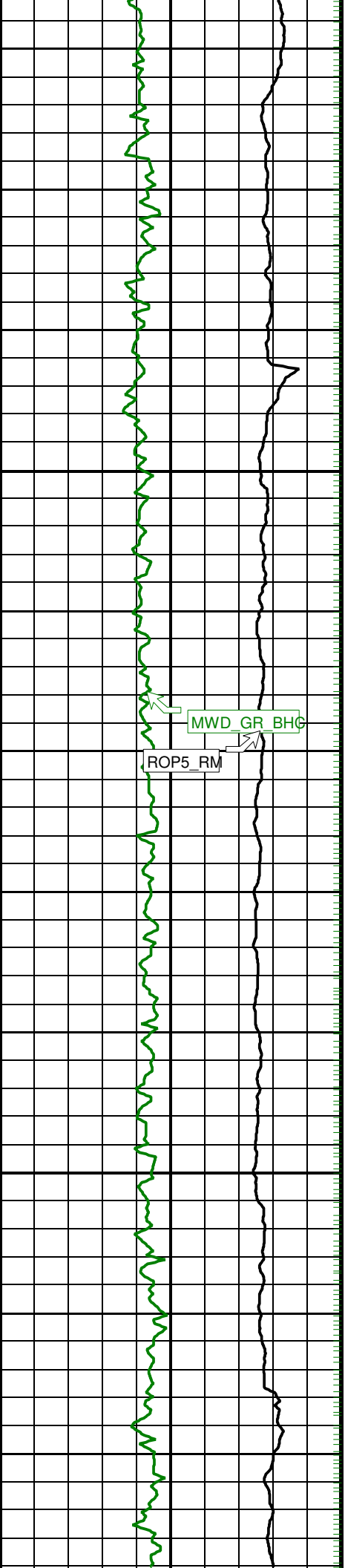


MWD GR BHC

ROP5 RM

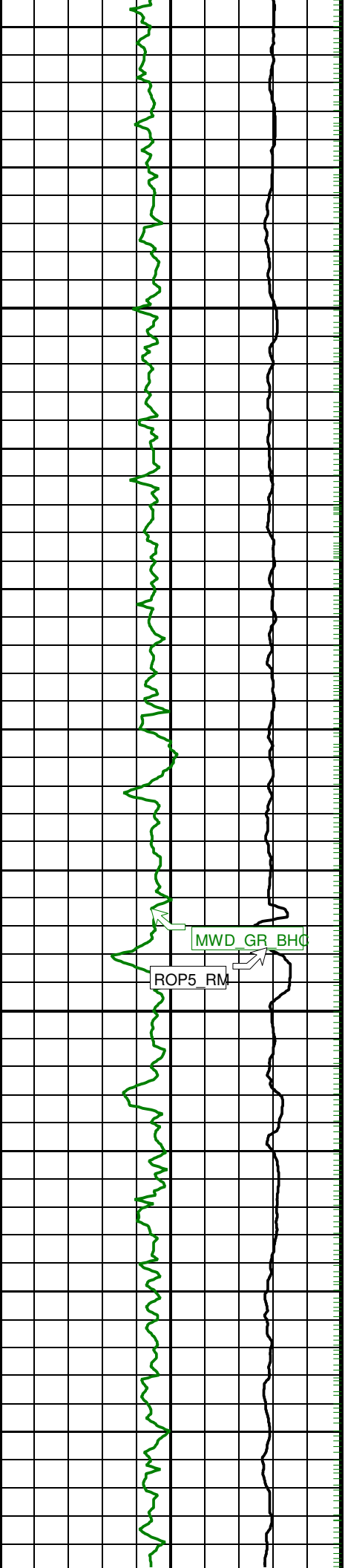
3250

3275



3300

3325

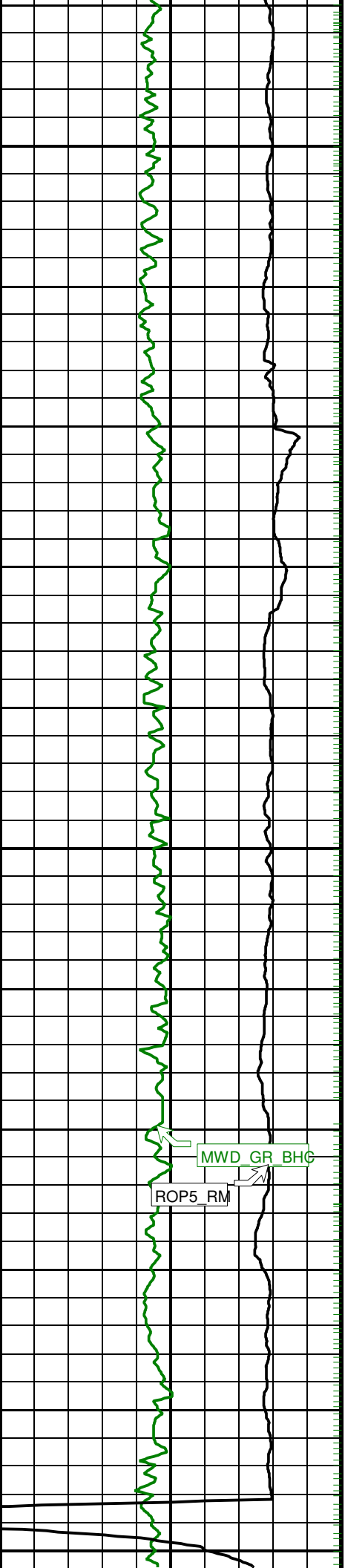


3350

3375

MWD GR BHC

ROP5 RM



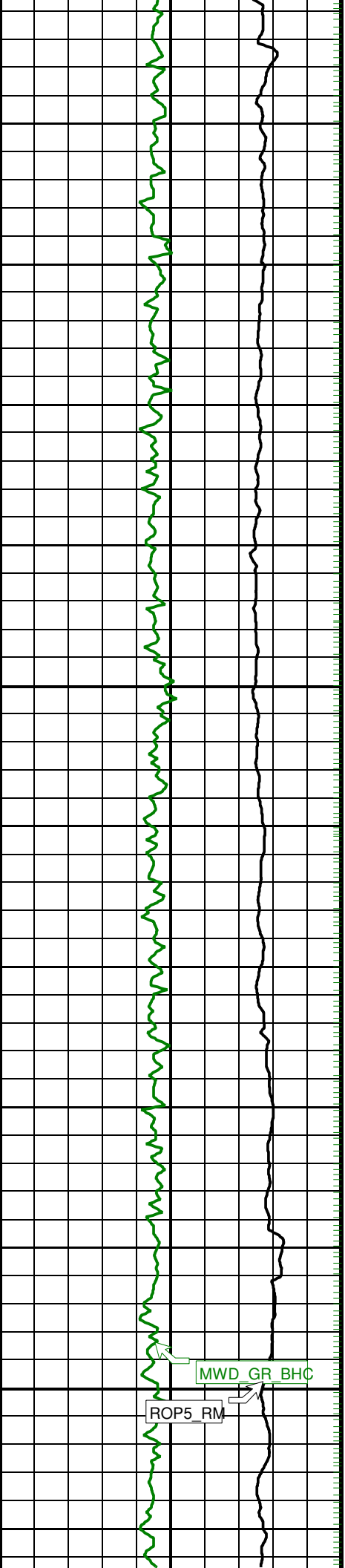
3400

3425

ROP5_RM

MWD GR BHC

3450



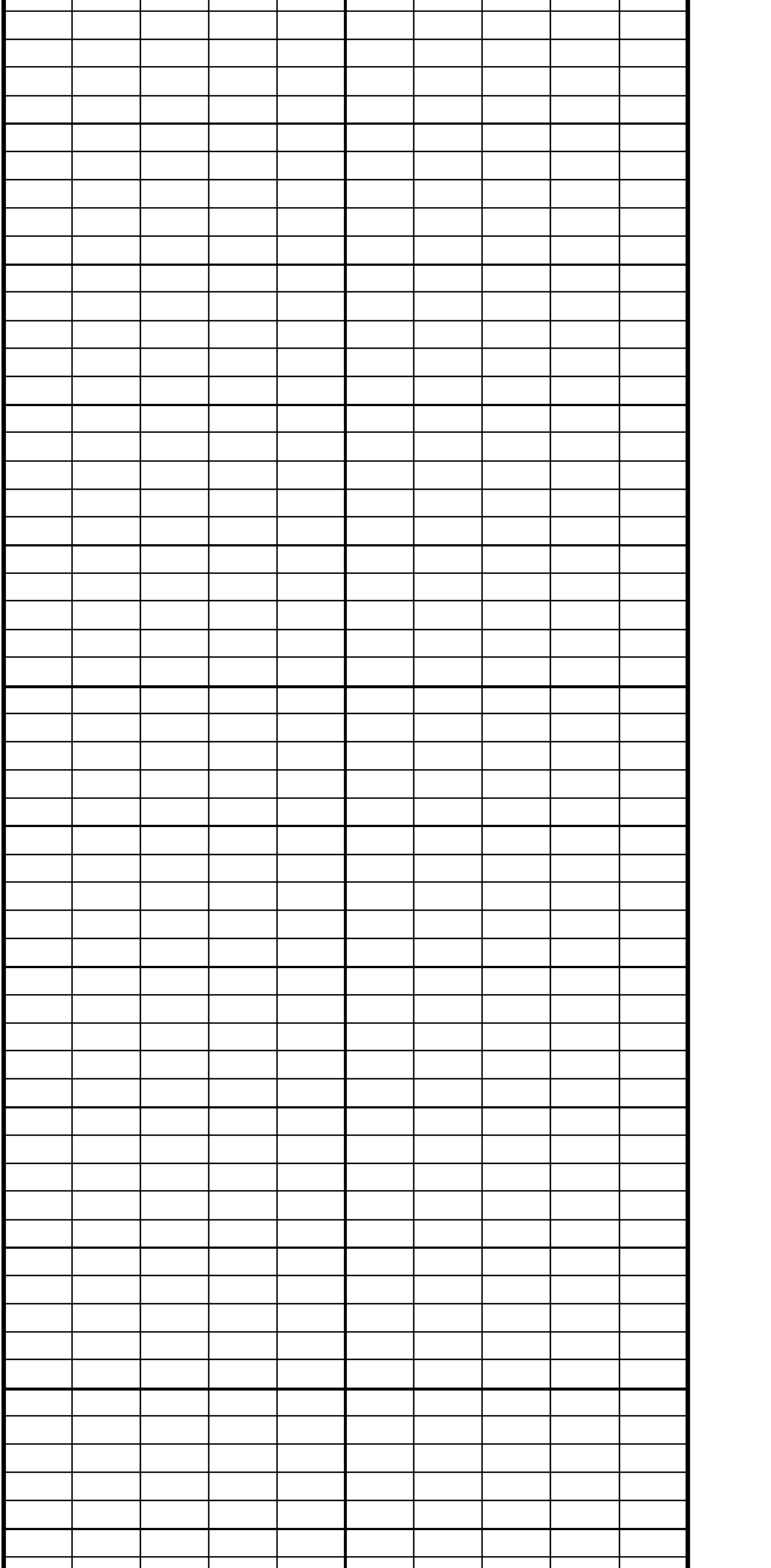
3450

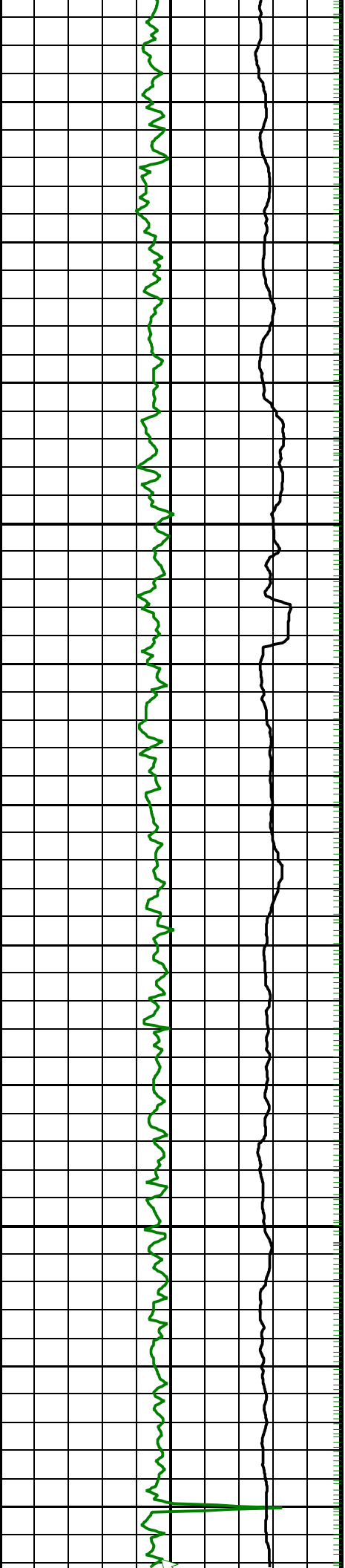
3475

3500

MWD_GR_BHC

ROP5_RM





3525

3550



| | | |
|-------------------------------------------------------|--------|-----|
| ARC Gamma Ray (GR_ARC) | | |
| 0 | (GAPI) | 200 |
| Borehole Corrected Gamma Ray (MWD_GR_BHC) | | |
| 0 | (GAPI) | 200 |
| Rate of Penetration, Averaged over Last 5ft (ROP5_RM) | | |
| 100 | (M/HR) | 0 |

| | | |
|------------------------------------------|--------|------|
| Annulus Pressure (APRS_ARC) | | |
| 0 | (PSI) | 6000 |
| Equivalent Circulating Density (ECD_CDR) | | |
| 0 | (SG) | 2 |
| Annular Pressure (PRSA) | | |
| 0 | (PSI) | 6000 |
| Annular Temperature (ATMP_CDR) | | |
| 0 | (DEGC) | 50 |

PIP SUMMARY

- + ARC Gamma Ray Samples
- + Gamma-Ray Samples

IDEAL Version: ID13_OC_02
IDF