

Import the reprocessed exp319 FMI image data with GeoFrame and GMI Imager

August 27, 2010

Yoshinori Sanada, LSS CDEX/JAMSTEC

This document describes the direction of importing the Exp 319 reprocessed FMI image data to GeoFrame (Shulumberger) and GMI Imager (Baker Hughes Incorporated, former GeoMechanics International). Read “Reprocessing note” to see the processing applied. CDEX supports only GeoFrame and GMI Imager. The data is tested with GeoFrame 4.4 and GMI Imager 5.3.

For GeoFrame user

Expand 319-C0009A_FMI_reprocessing.gf66.zip to 319-C0009A_FMI_reprocessing.gf66. GeoFrame “Load Data” allows you to load the GeoFrame archive (gf66) file. The dynamic and static image will be loaded in Figure 1 in “General Data Manager” of GeoFrame.

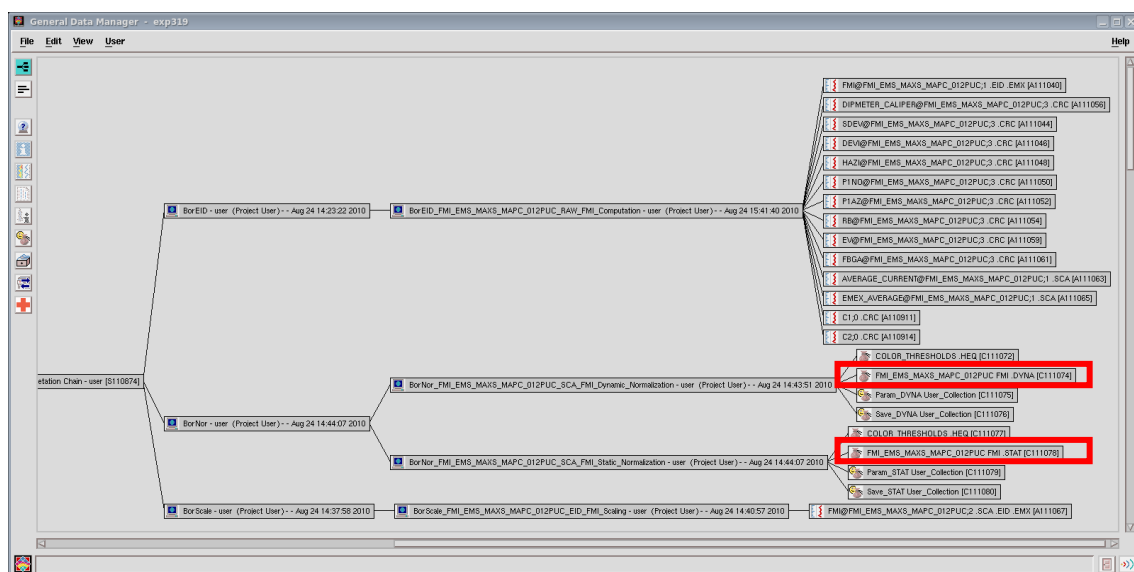


Figure 1: The image data are loaded in “General Data Manager” in GeoFrame.

For GMI Imager user

Expand 319-C0009A_FMI_reprocessing_for_GMI_Imager.dlis.zip to 319-C0009A_FMI_reprocessing_for_GMI_Imager.dlis. “Import” allows you to import DLIS files of FMI imaging data. The procedure is same as that for a normal DLIS data. The data to be selected are shown in Figure 2 and 3. Speed correction and scaling were applied. Generate dynamic and static image as usual.

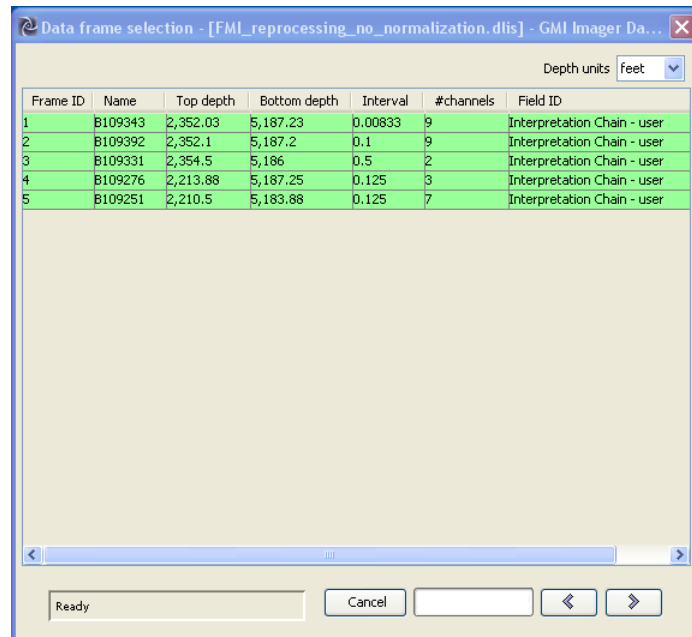


Figure 2: Select all data frames.

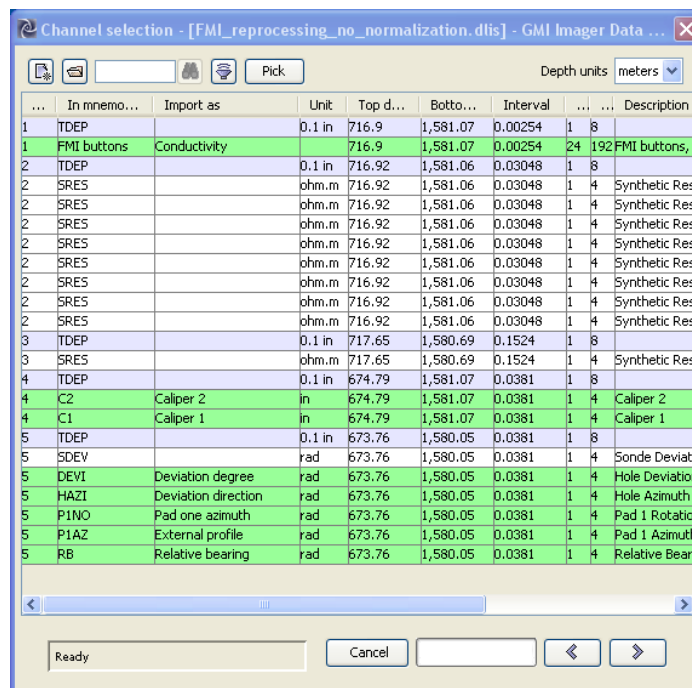


Figure 3: Select “FMI buttons”, calipers, and inclination data.