

NT2-01_GeoVISION Resistivity_RM_MD200_Reelog Spliced

File ID:CDF_NT2-01

FN:66 27-Aug-2009 16:39

8510.0 FT

10194.0 FT

IDEAL Version: ID14_OC_12
IDF

Format: NT1-07_GeoVISION Resistivity_RM_MD200

Vertical Scale: 1:200

Graphics File Created: 06-Sep-2009 15:42

Parameters

DLIS Name

Description

Value

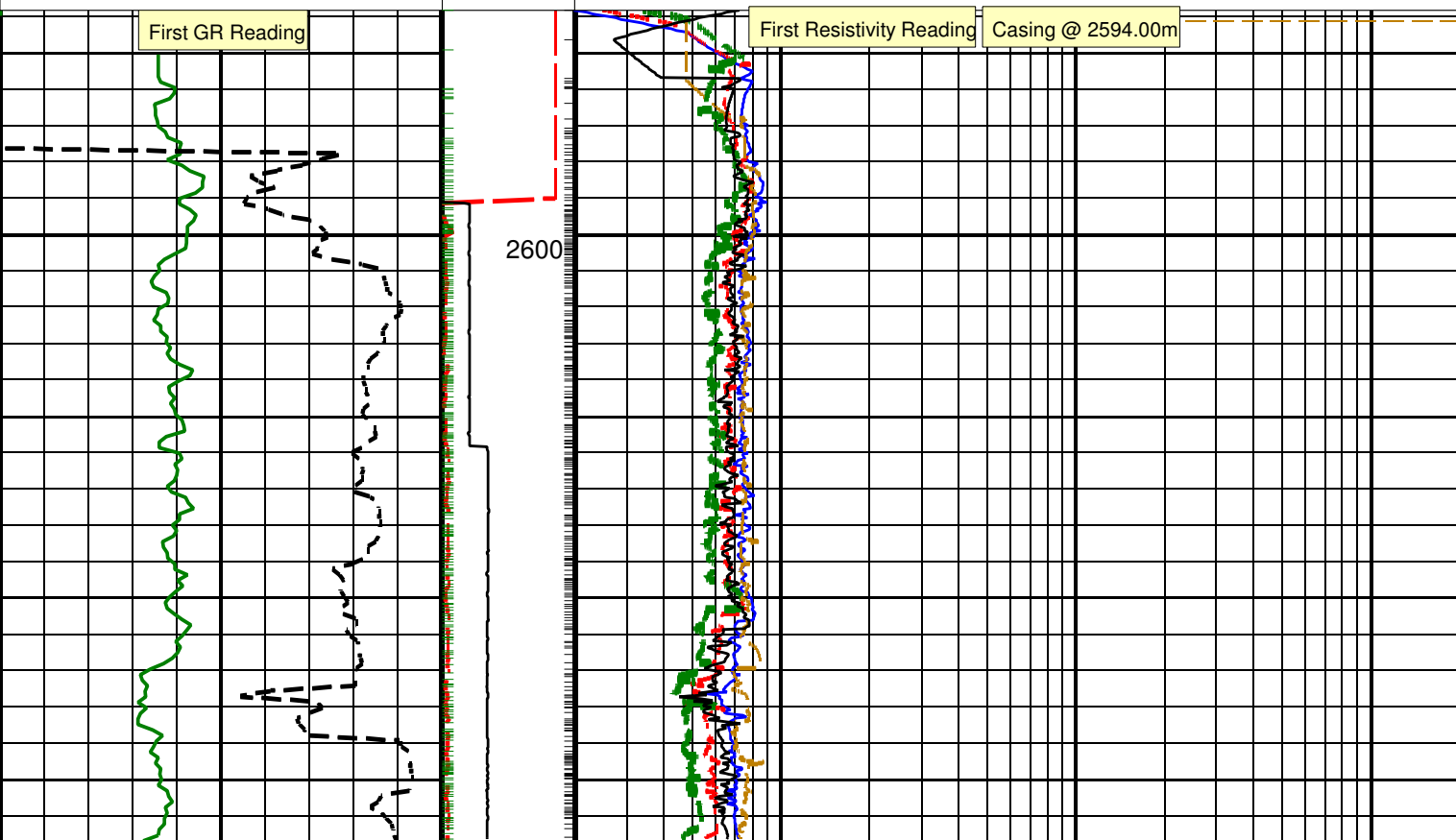
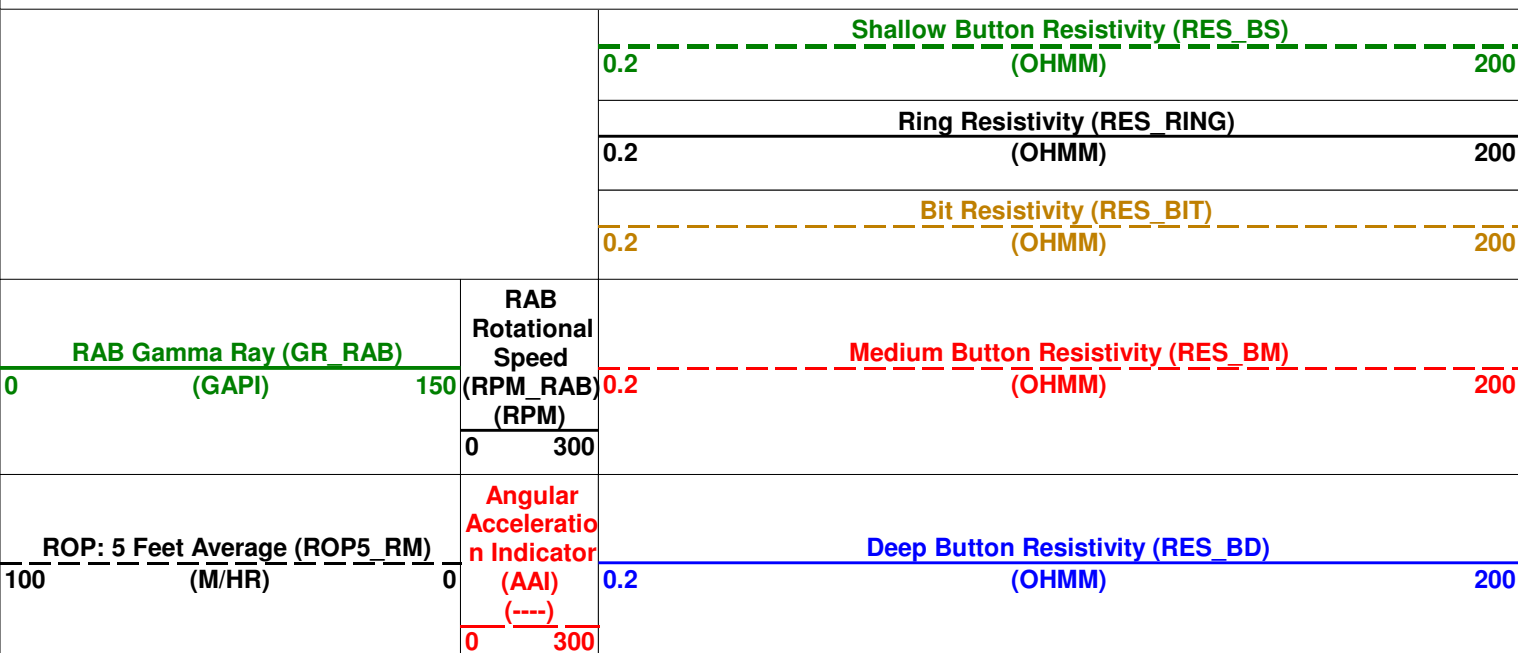
DO

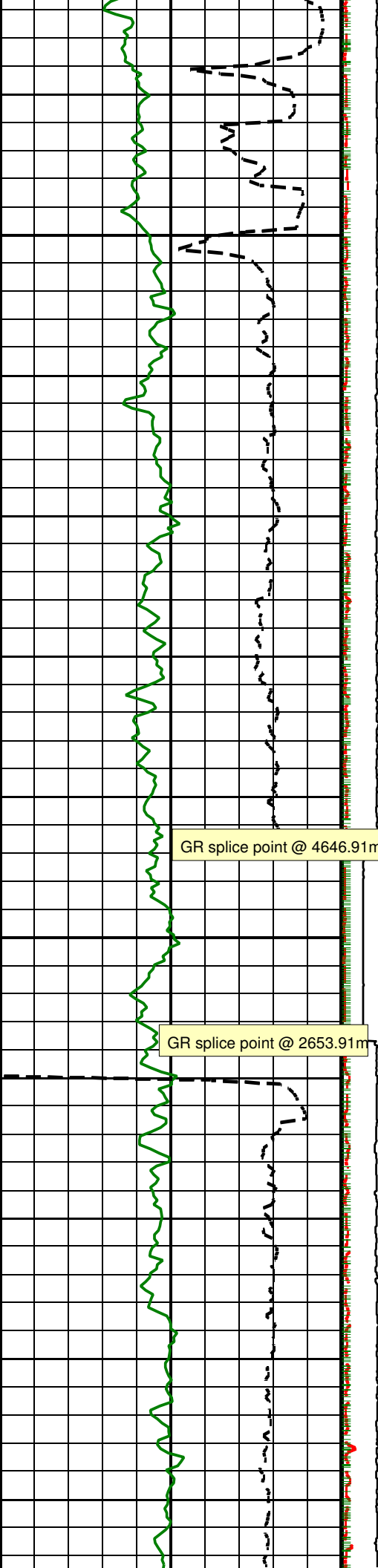
Depth Offset

0.0 m

PIP SUMMARY

- + Gamma Ray Samples
- + Ring Samples



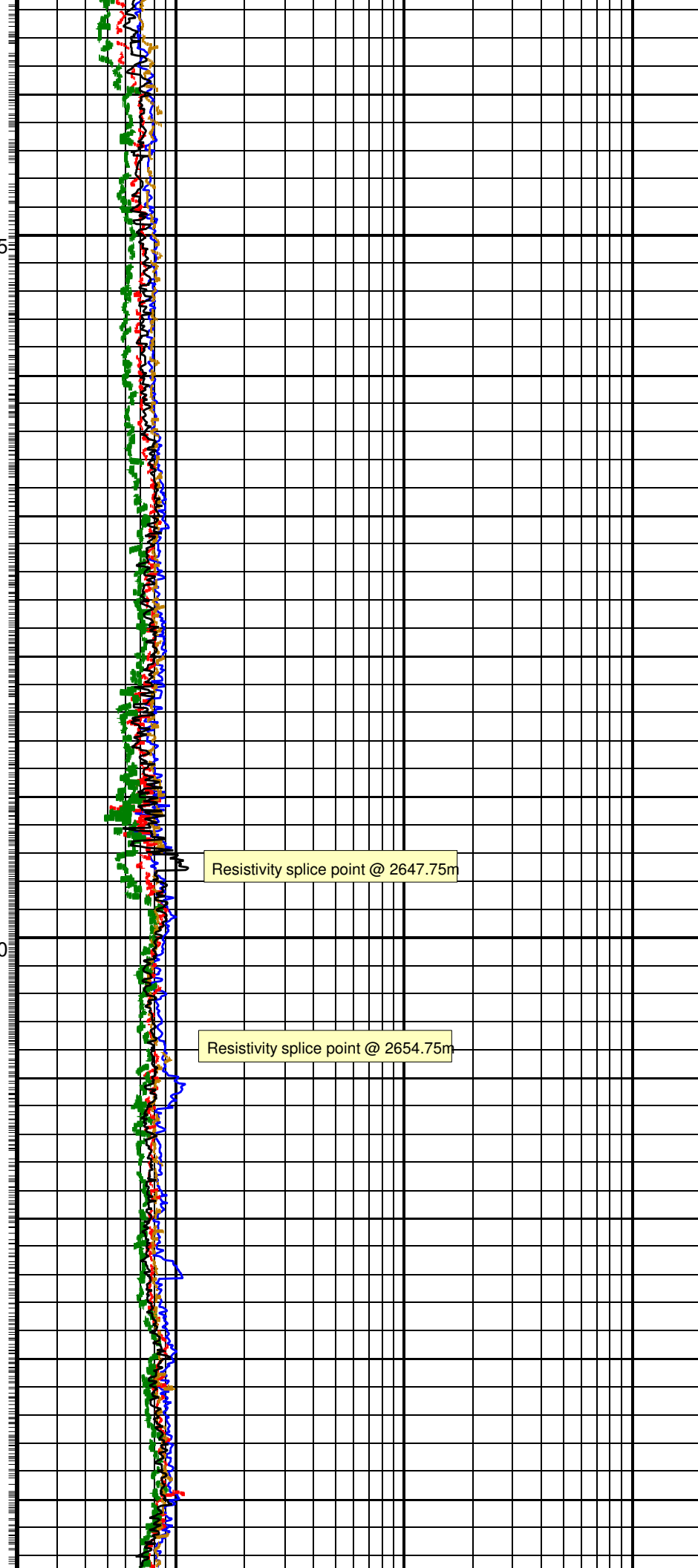


2625

2650

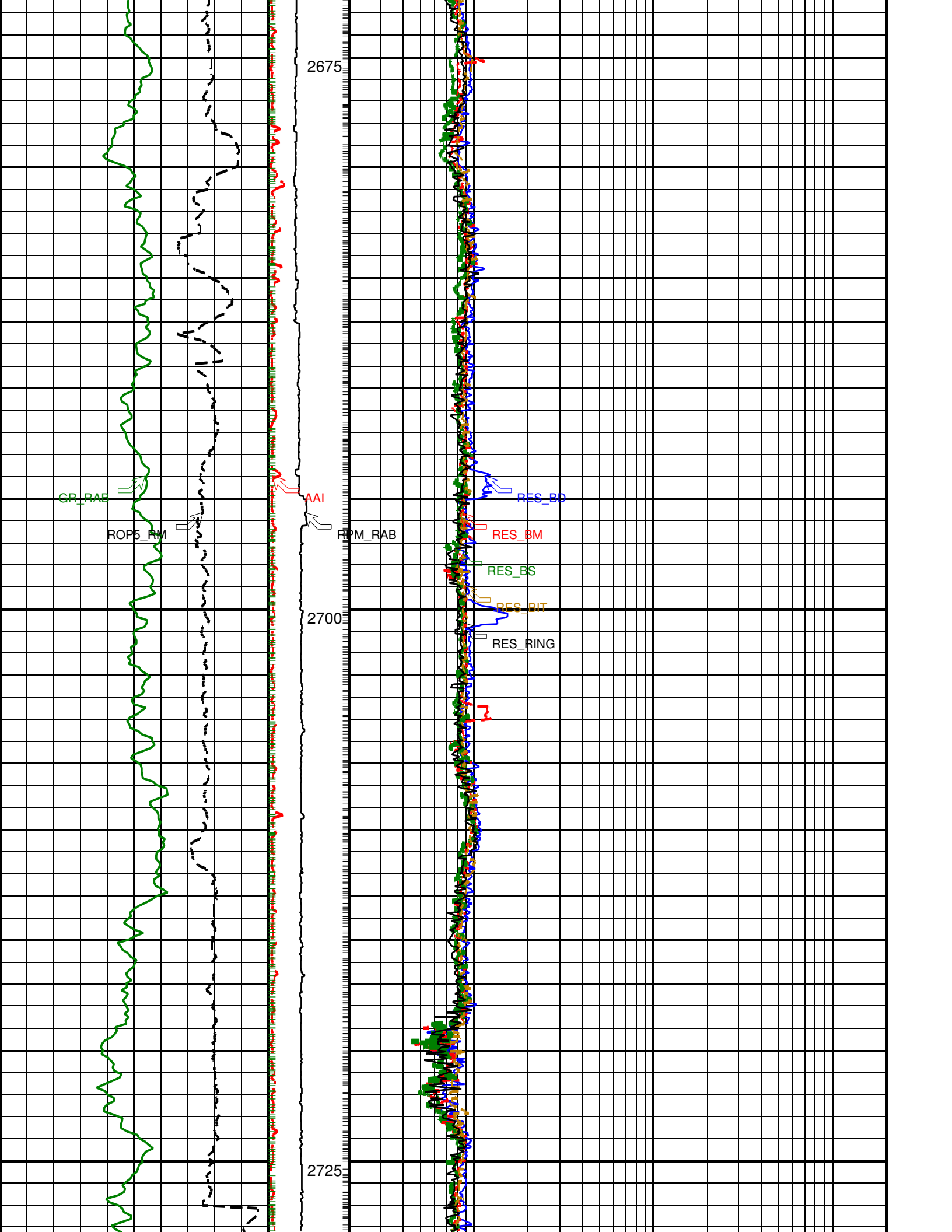
GR splice point @ 4646.91m

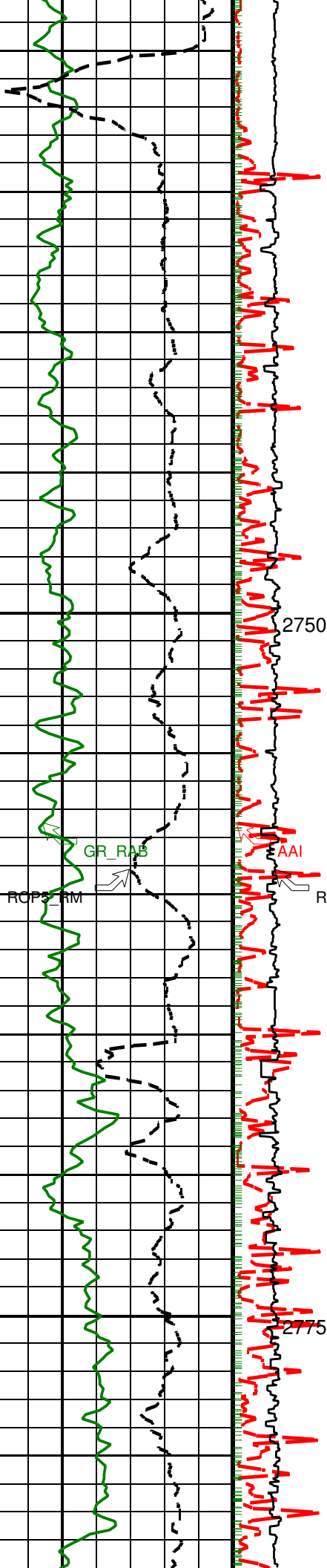
GR splice point @ 2653.91m



Resistivity splice point @ 2647.75m

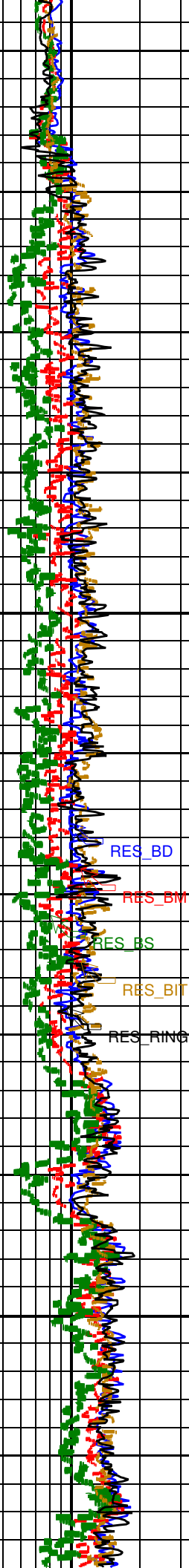
Resistivity splice point @ 2654.75m





2750

2775



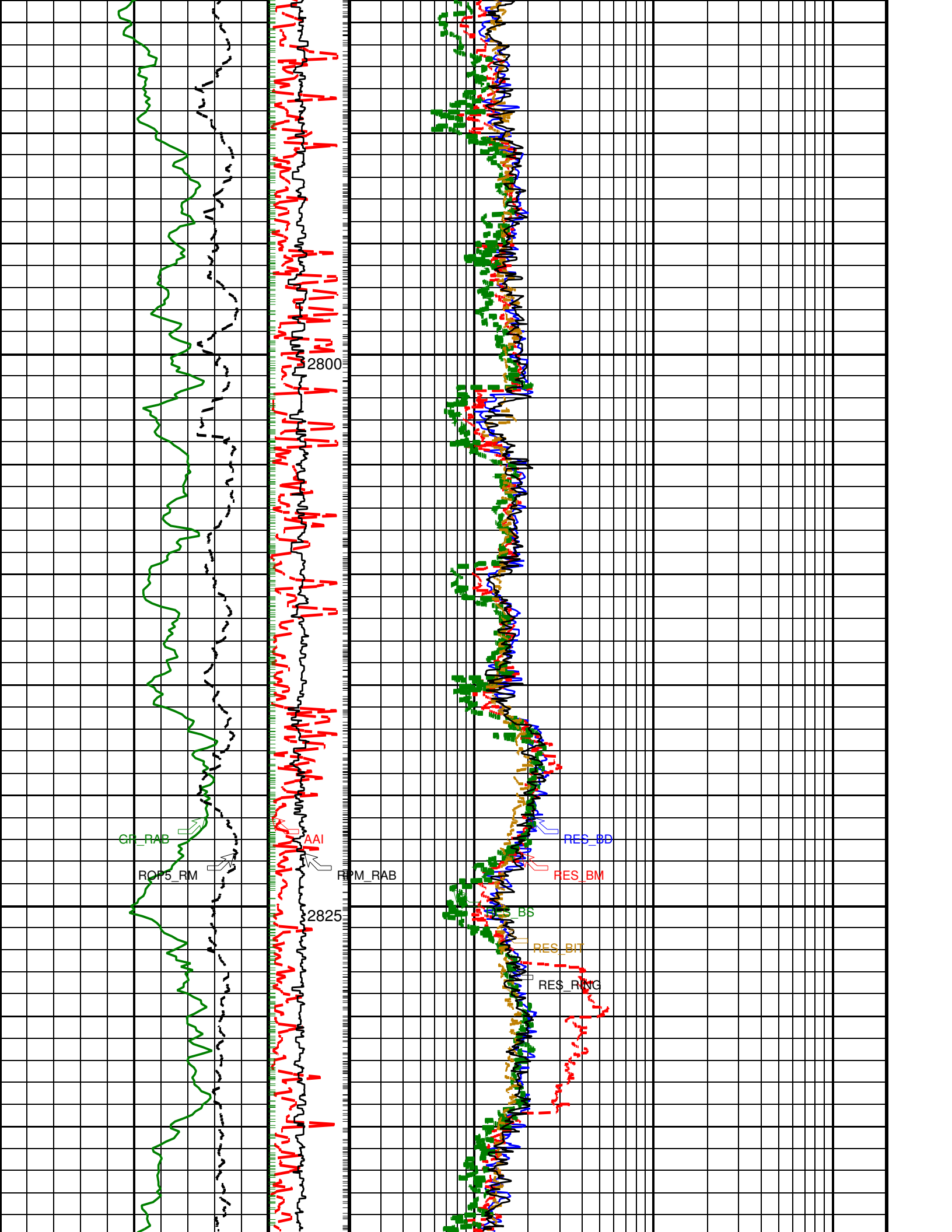
RES_BD

RES_BM

RES_BS

RES_BIT

RES_RING



GR_RAB

ROP5_RM

ROP5_RAB

RES_EB

RES_B2

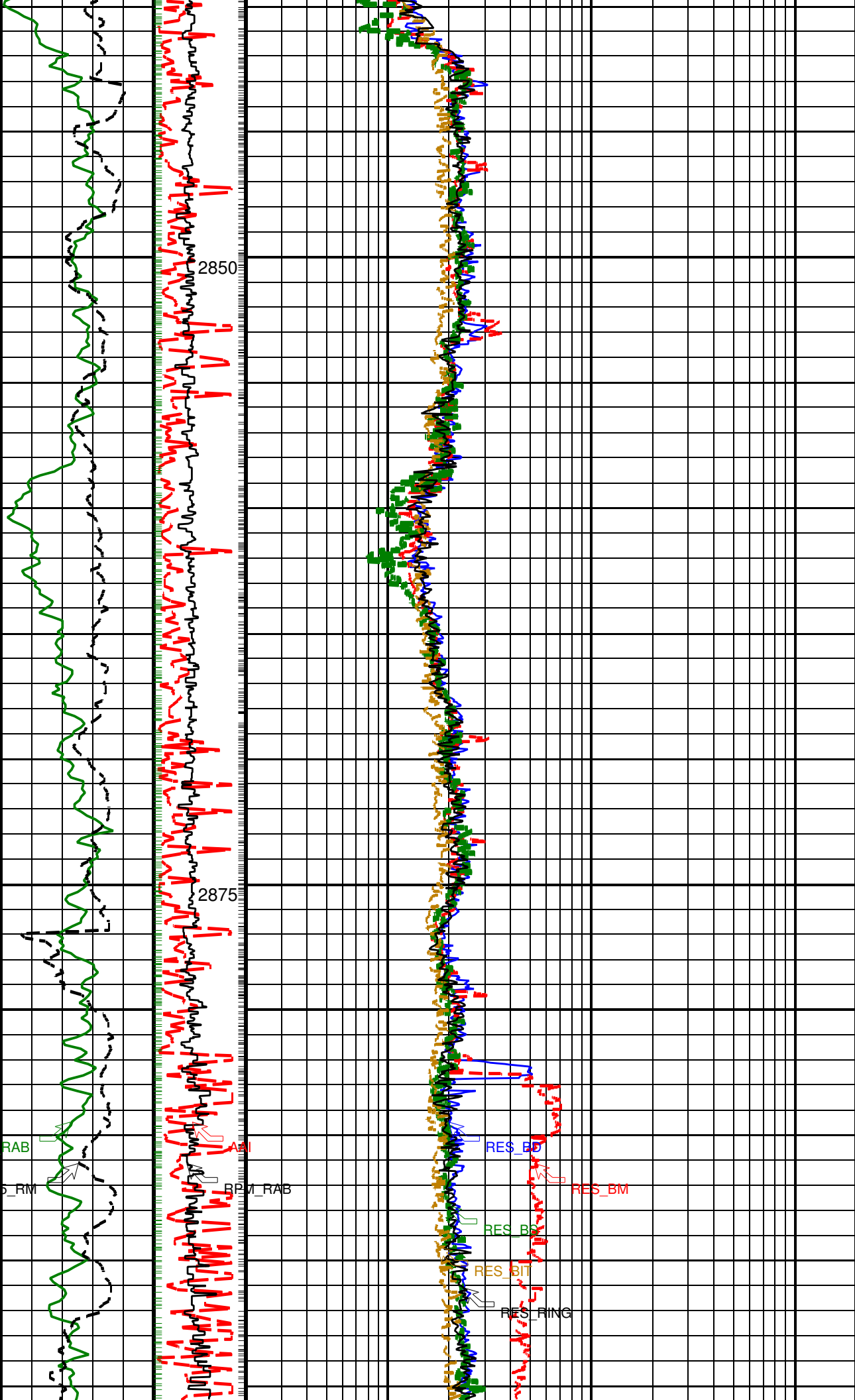
RES_B1

RES_RING

RES_BM

2850

2875



GR splice point @ 2899.39m

Resistivity splice point @ 2900.23m

2900

2925

GR_RAB

AAI

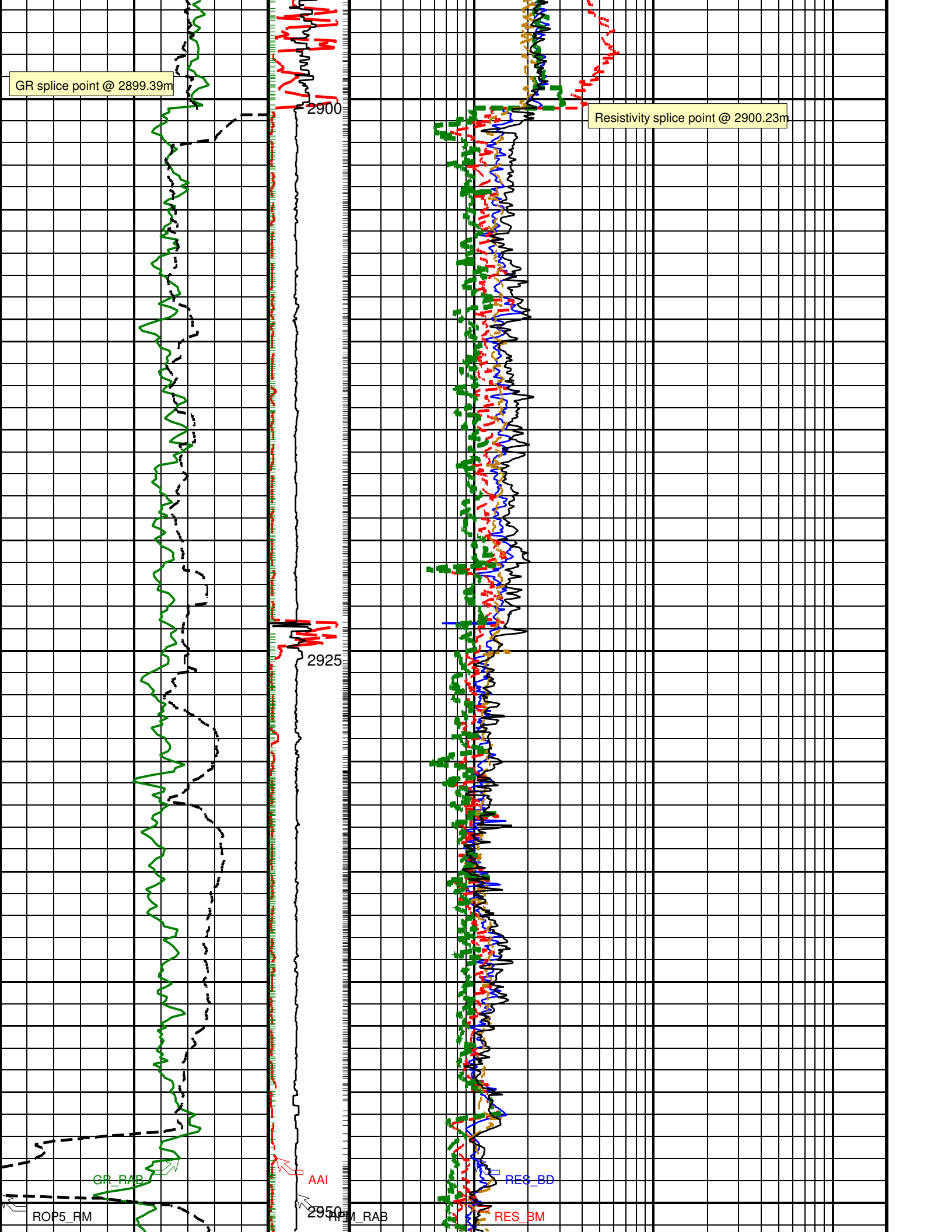
ROP5_FM

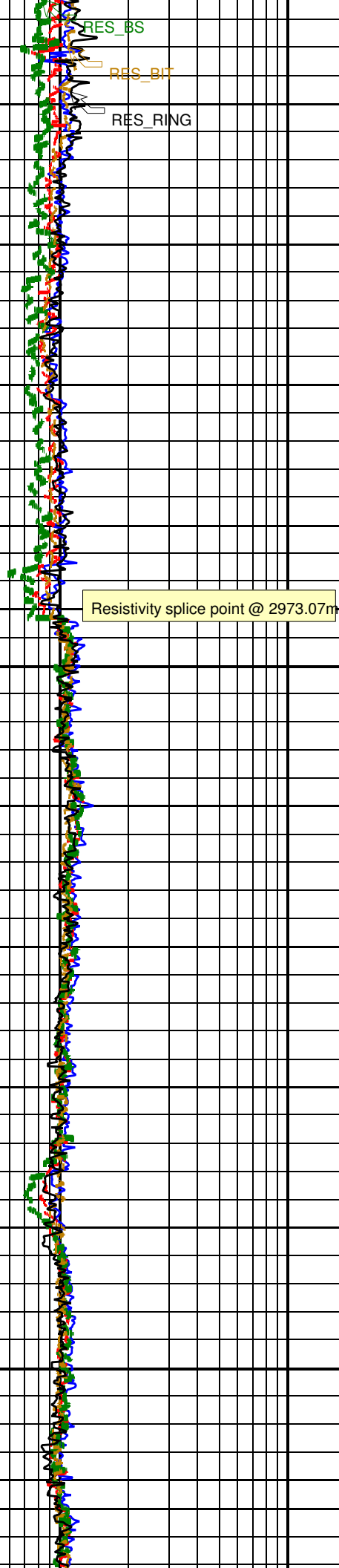
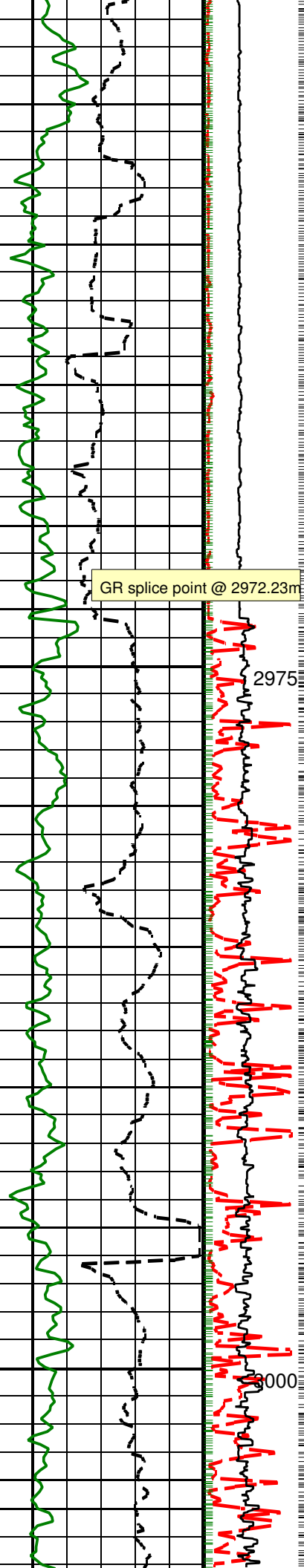
2950

M_RAB

RES_BD

RES_BM





GR_RAB

RCF5_RM

AI

PM_FAB

RES_BD

RES_BM

RES_BS

RES_BIT

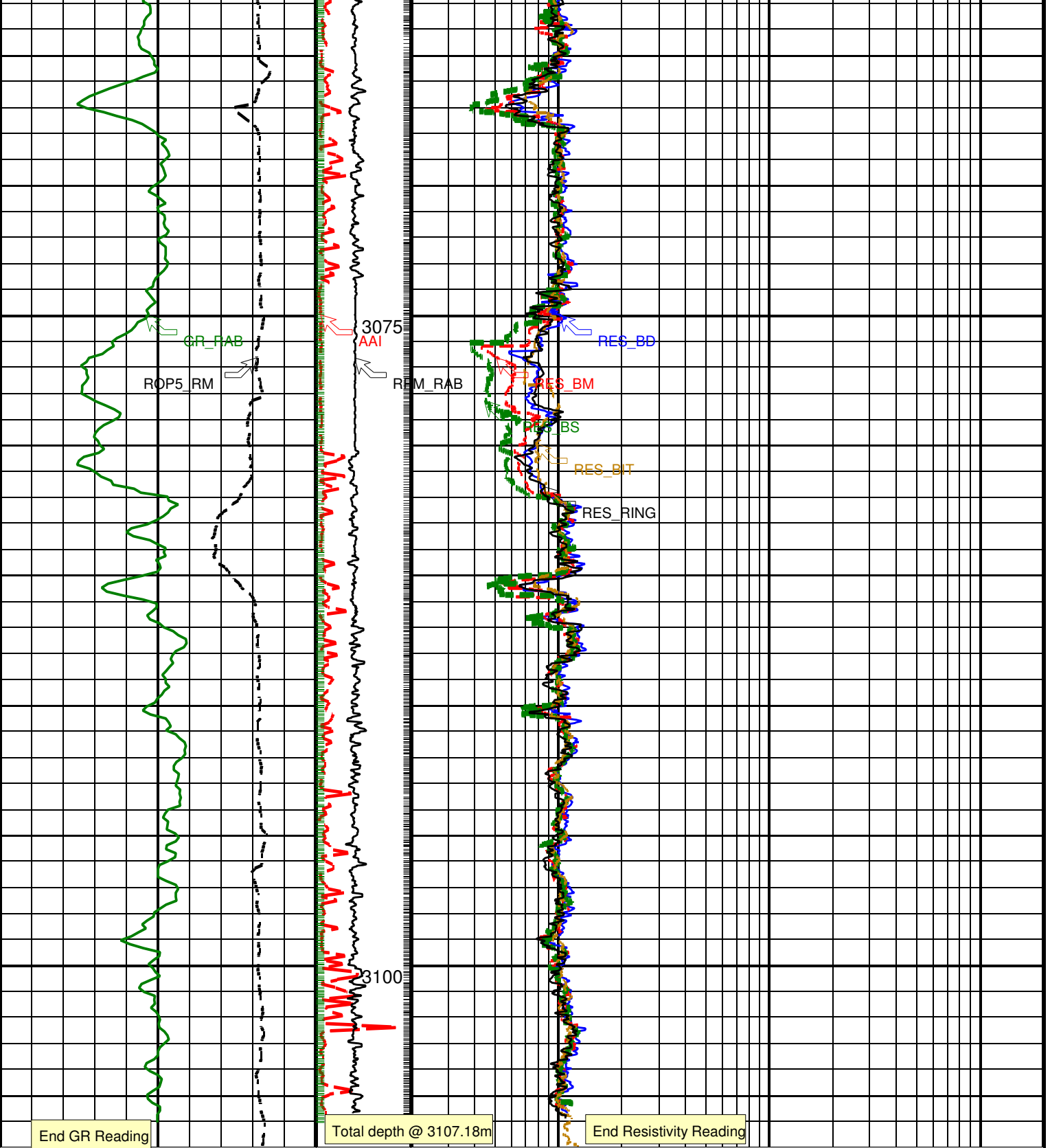
RES_RING

GR splice point @ 3031.98m

Resistivity splice point @ 3032.82m

3025

3050



<p>ROP: 5 Feet Average (ROP5_RM)</p> <p>(M/HR)</p> <p>100 0</p>	<p>Angular Acceleration Indicator (AAI) (---)</p> <p>0 300</p>	<p>Deep Button Resistivity (RES_BD)</p> <p>(OHMM)</p> <p>0.2 200</p>
<p>RAB Gamma Ray (GR_RAB)</p> <p>(GAPI)</p> <p>0 150</p>	<p>RAB Rotational Speed (RPM_RAB) (RPM)</p> <p>0 300</p>	<p>Medium Button Resistivity (RES_BM)</p> <p>(OHMM)</p> <p>0.2 200</p>
		<p>Bit Resistivity (RES_BIT)</p> <p>(OHMM)</p> <p>0.2 200</p>

	0.2	(OHMM)	200
	Ring Resistivity (RES_RING)		
	0.2	(OHMM)	200
	Shallow Button Resistivity (RES_BS)		
	0.2	(OHMM)	200
PIP SUMMARY			
└ Gamma Ray Samples			
└ Ring Samples			
IDEAL Version: ID14_0C_12			
IDF			
Input DLIS Files			
File ID:CDF_NT2-01		FN:66 27-Aug-2009 16:39	8510.0 FT 10194.0 FT