

Integration Summary

| Output Channel(s) | Output Description | Input Parameter | Output Value | Unit |
|-------------------|--------------------|-----------------|--------------|------|
|-------------------|--------------------|-----------------|--------------|------|

Software Version

| Acquisition System | Version |
|--------------------|------------|
| MaxWell | 2.0.6803.0 |

| Computation | Description | Version |
|-------------------------|---|------------|
| ARC8GammaRayComputation | ARC8 Gamma Ray Computation Package for both Real-time and Recorded Mode | 2.0.6803.0 |

| Tool Elements | Description | Software Version | Firmware Version |
|------------------|------------------------------------|------------------|------------------|
| ARDC | ARC 8.25 Inch Tool Drilling Collar | 2.0.6803.0 | V9.4B |
| DRILLING_SURFACE | DRILLING_SURFACE | 2.0.6803.0 | |

Pass Summary

| Run Name | Pass Objective | Direction | Start | Stop | Acquisition Start Date | Acquisition Start Time |
|----------|----------------|-----------|----------------------|----------------------|------------------------|------------------------|
| 1 | TimeLogicalAcq | Down | 16-Nov-2010 18:18:07 | 19-Nov-2010 16:04:53 | 16-Nov-2010 | 18:18:07 |

Log

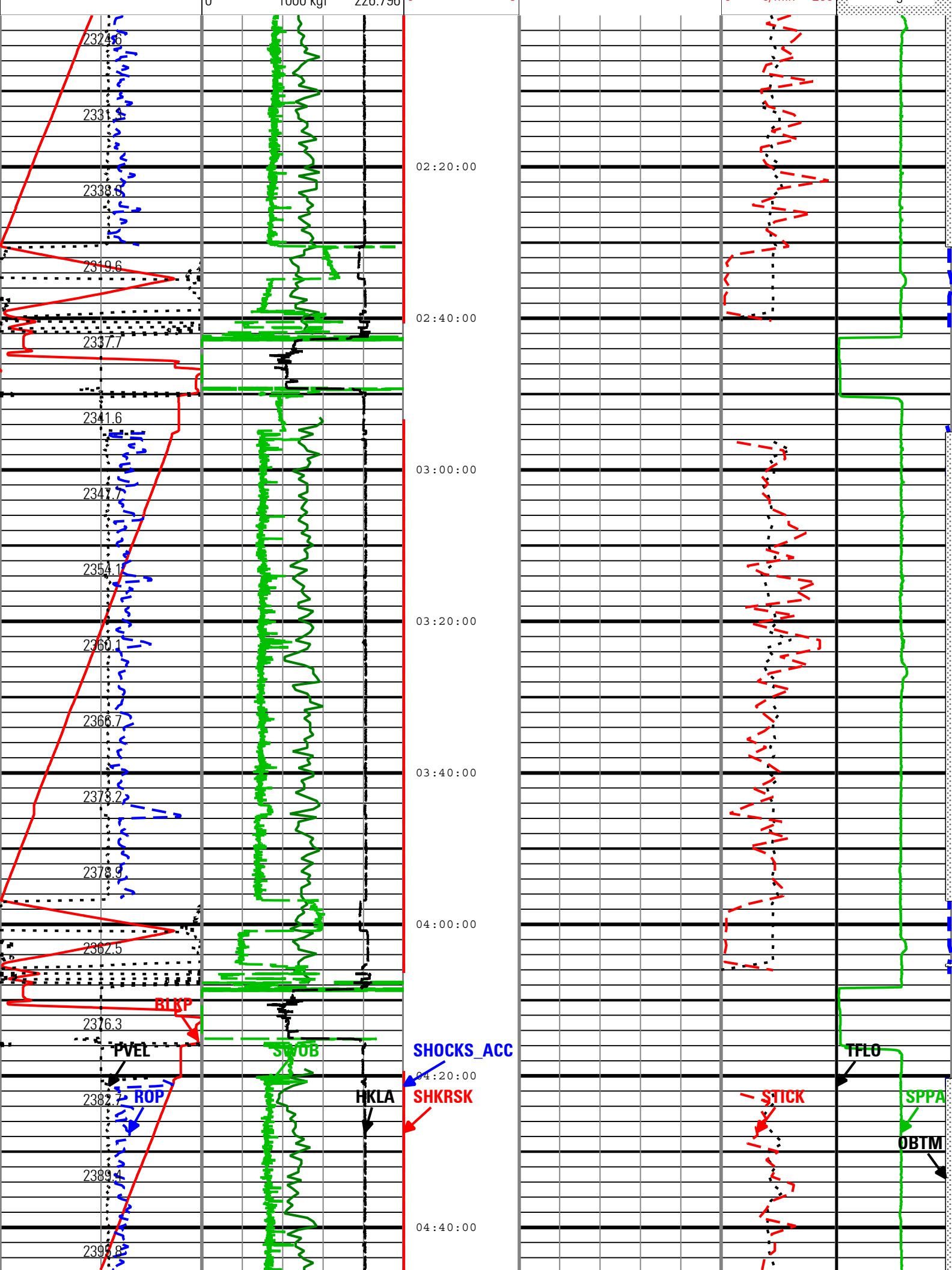
1: TimeLogicalAcq 46C746E6-90B6-4F13-8FFD-A0D781F4F4E8

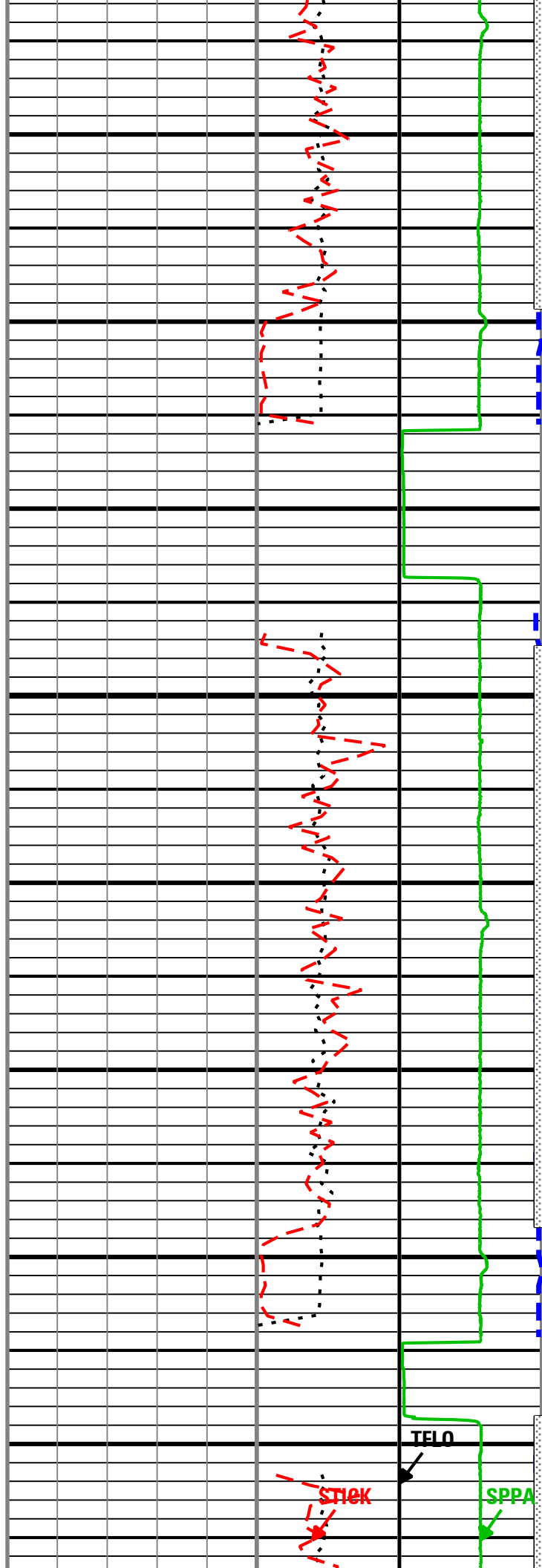
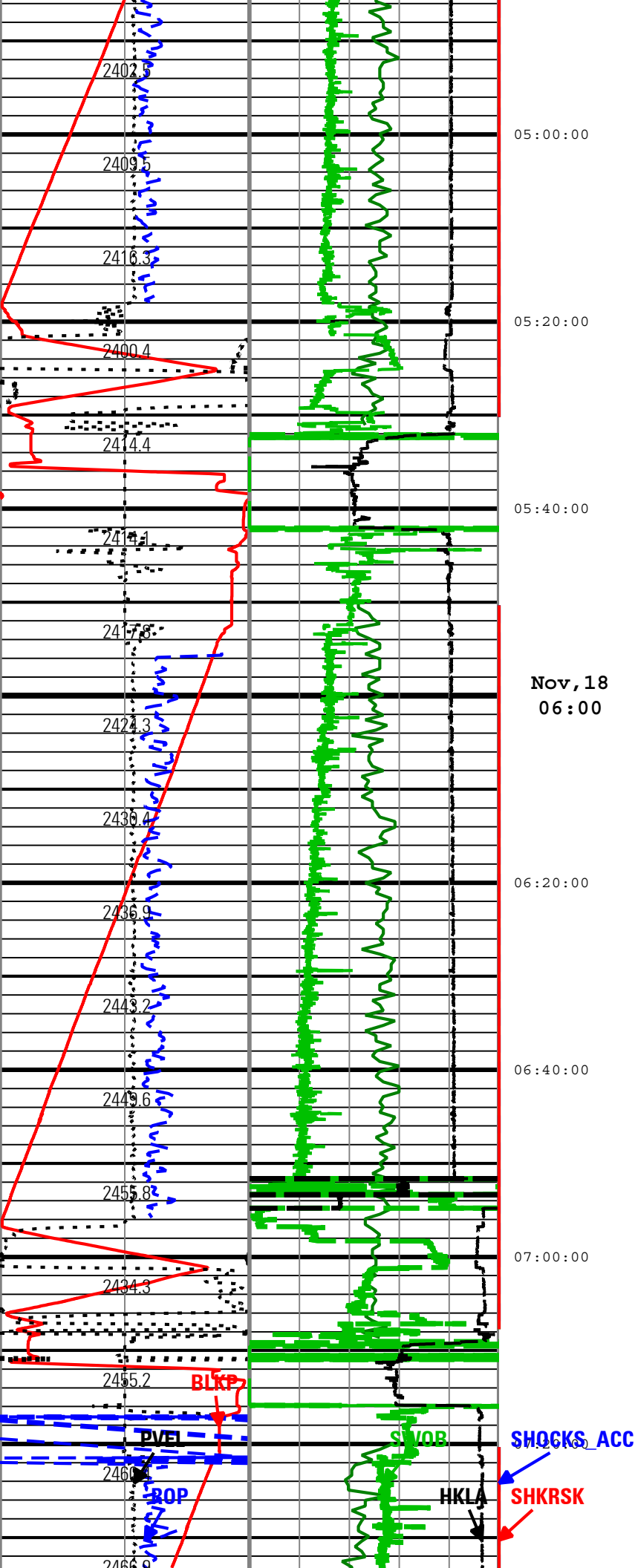
Description: TeleScope Drilling Mechanics Time RT Format: Log (TeleScope Drilling Mechanics Time RT) Index Scale: 10 cm per 3600 s Index Type: Time

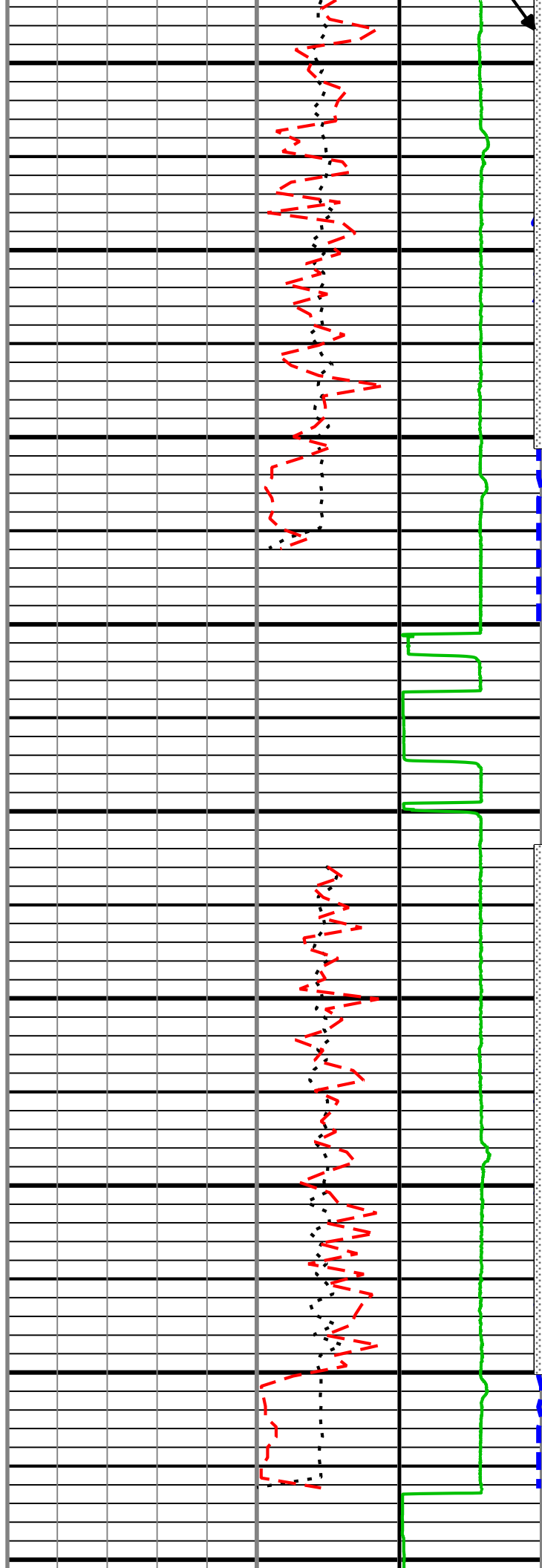
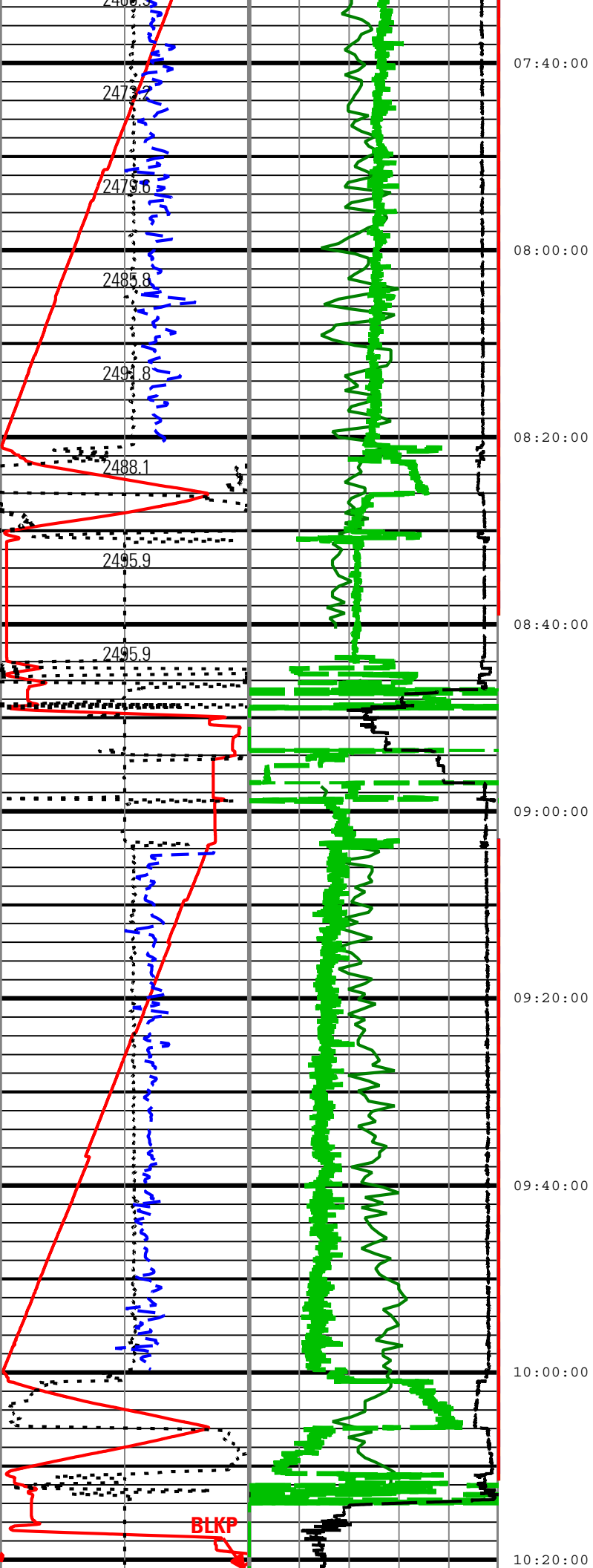
Creation Date: 20-Nov-2010 04:56:06

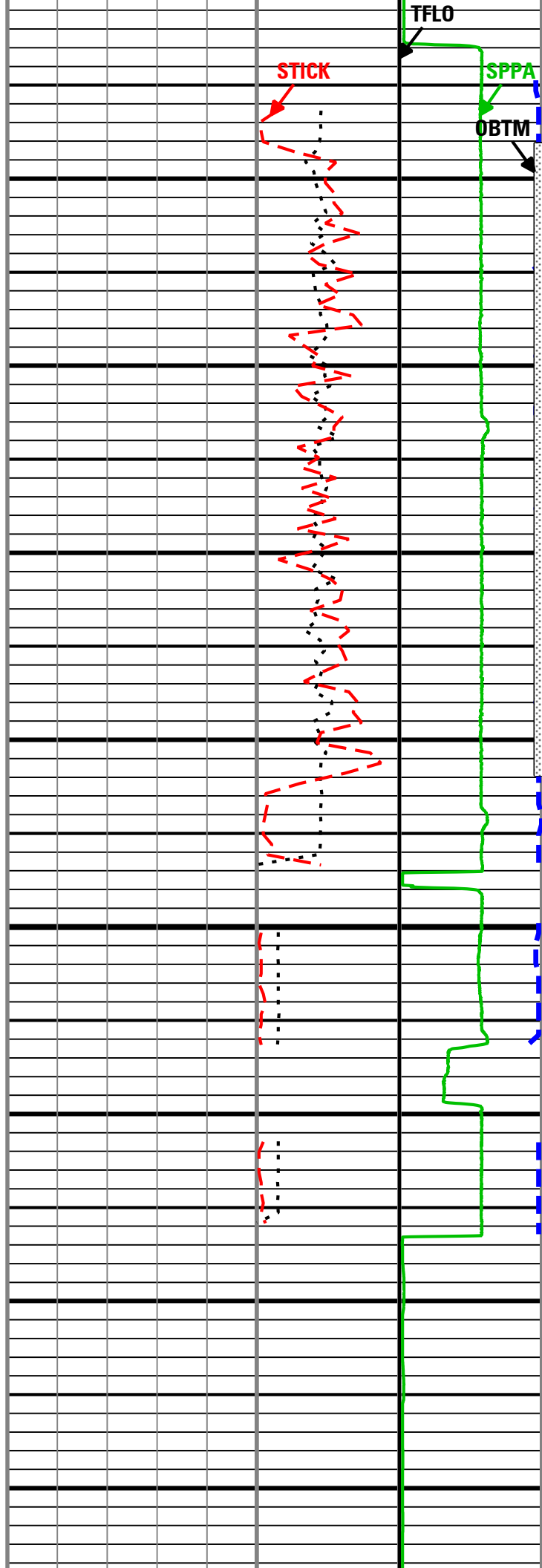
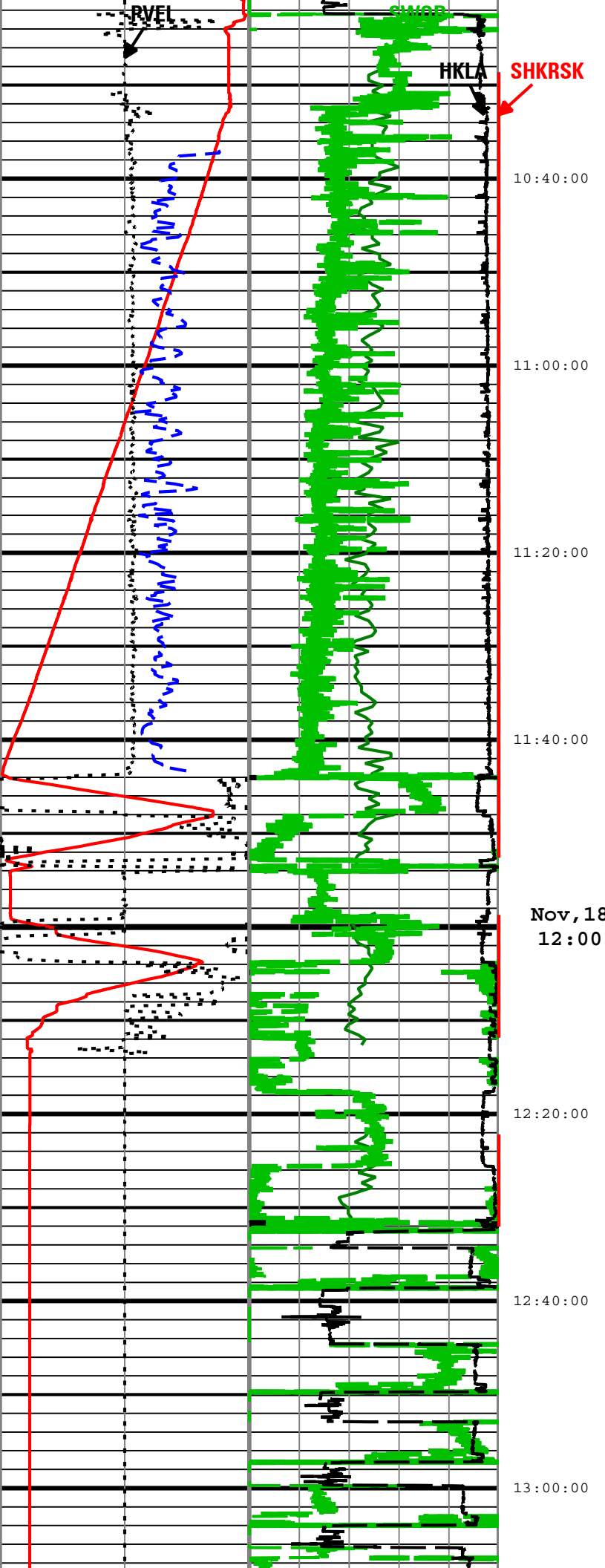
| | | |
|------------|------------------|----------|
| BLKP | DRILLING_SURFACE | ACQ - RT |
| CRPM | TELE825:TELE825 | ACQ - RT |
| DEPTH | DnMWorkflow | ACQ - RT |
| GR | ARC8:ARC8:ARDC | ACQ - RT |
| HKLA | DRILLING_SURFACE | ACQ - RT |
| OBTM | DnMWorkflow | ACQ |
| PVEL | DRILLING_SURFACE | ACQ - RT |
| ROP | DRILLING_SURFACE | ACQ - RT |
| RPM | DRILLING_SURFACE | ACQ - RT |
| SHKR | TELE825:TELE825 | ACQ - RT |
| SHKRSK | TELE825:TELE825 | ACQ - RT |
| SHOCKS_ACC | TELE825:TELE825 | ACQ - RT |
| SPPA | DRILLING_SURFACE | ACQ - RT |
| STICK | TELE825:TELE825 | ACQ - RT |
| SWOB | DRILLING_SURFACE | ACQ - RT |
| TFLO | DRILLING_SURFACE | ACQ - RT |
| TRPM | TELE825:TELE825 | ACQ - RT |

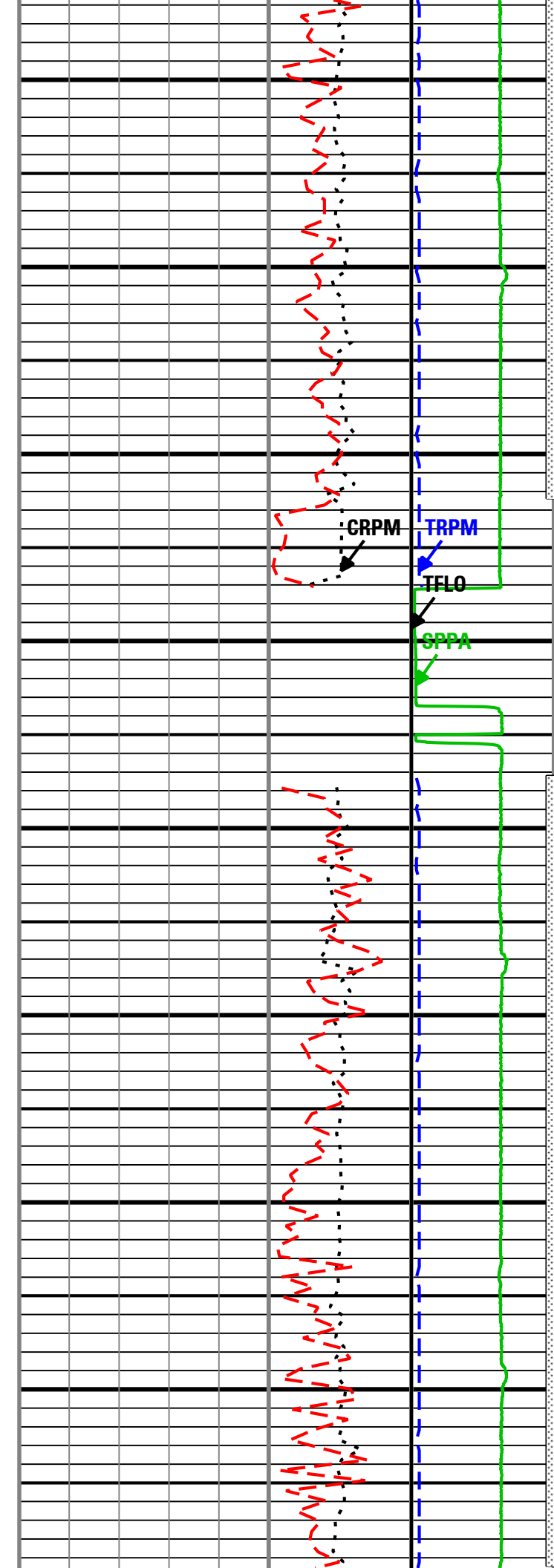
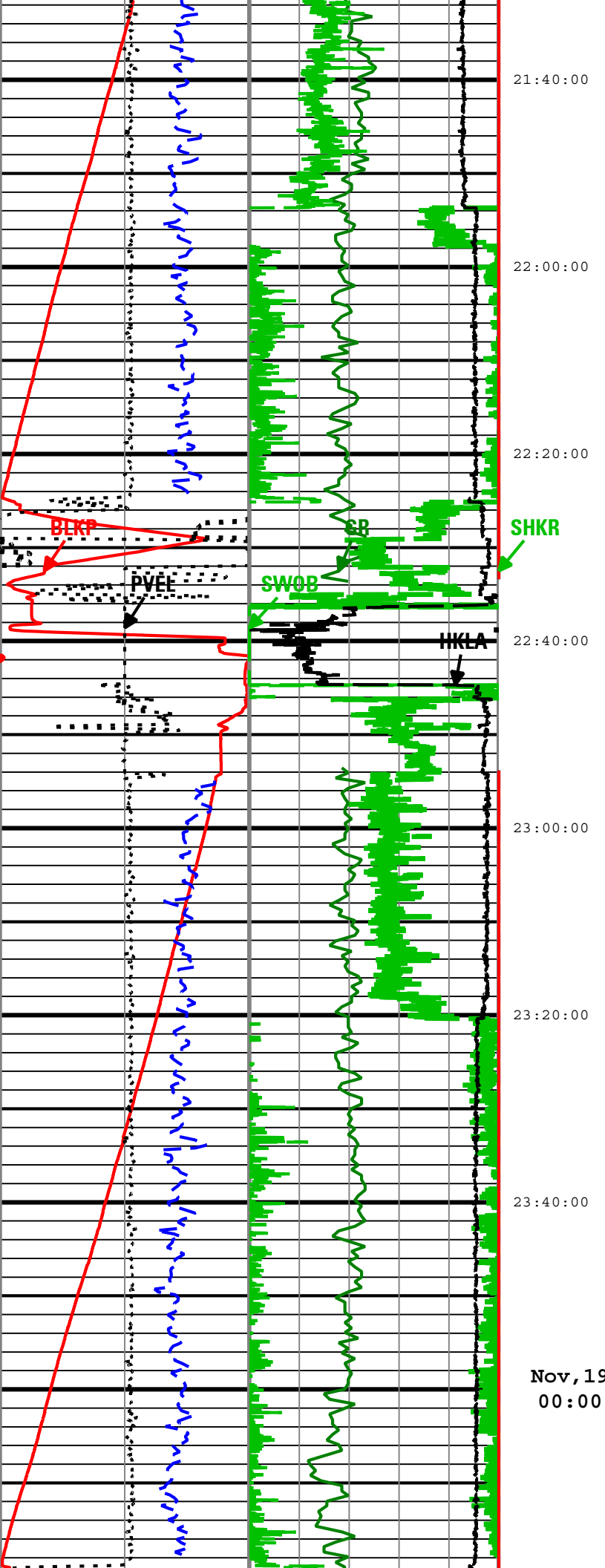
| | | | |
|---|--------------------|--|-----------------|
| Shock Rate (SHKR) TELE825 RT | 0 1/s 250 | MWD Turbine Rotation Speed (TRPM) TELE825 RT | 2000 c/min 4000 |
| Height of block above rig floor (BLKP) RT | 0 m 45 | Collar Rotational Speed (CRPM) TELE825 RT | 0 c/min 200 |
| Pipe Velocity (PVEL) RT | -548.64 m/h 548.64 | Rotational Speed (RPM) RT | 0 c/min 200 |
| Rate of Penetration (ROP) RT | 100 m/h 0 | Stick Slip Indicator (STICK) TELE825 RT | 0 kPa 24000 |
| Gamma Ray (GR) ARC8 RT | 0 gAPI 150 | Standpipe Pressure (SPPA) RT | 0 kPa 24000 |
| Surface Weight On Bit (SWOB) RT | 0 1000 kgf 226.796 | Bit on Bottom Flag | |
| Shock Risk (SHKRSK) TELE825 RT | 0 5 | | |
| Average Hookload (HKLA) RT | 0 1000 kgf 226.796 | | |

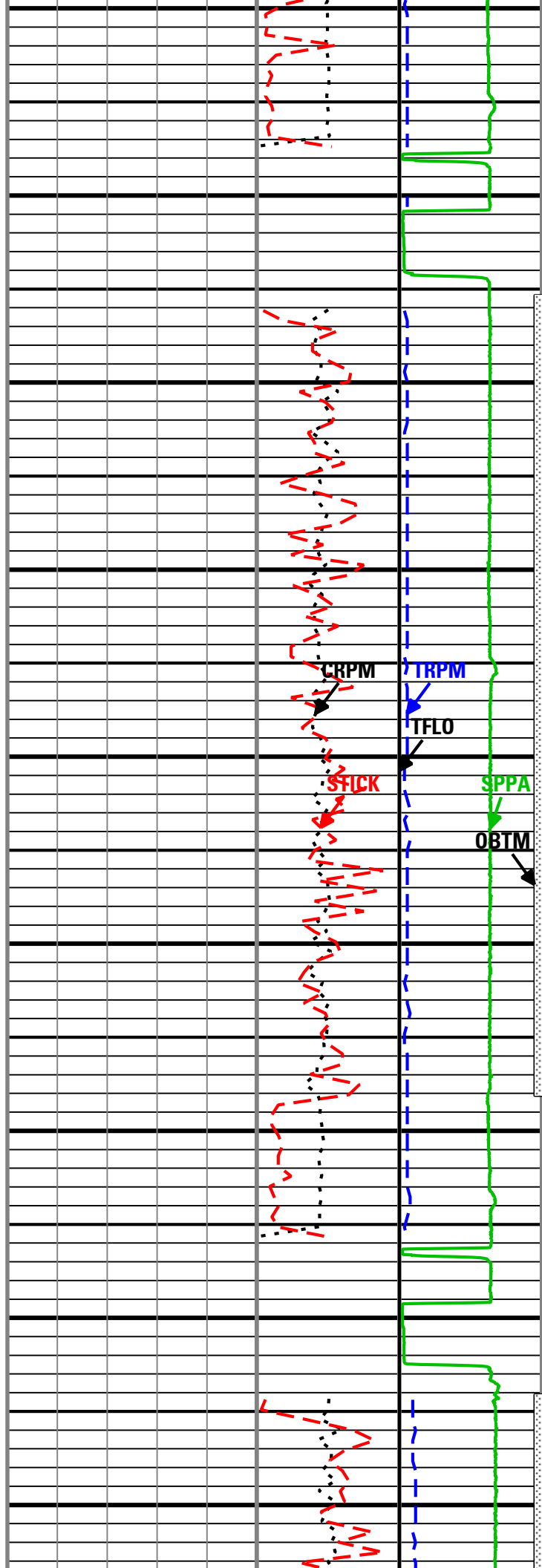
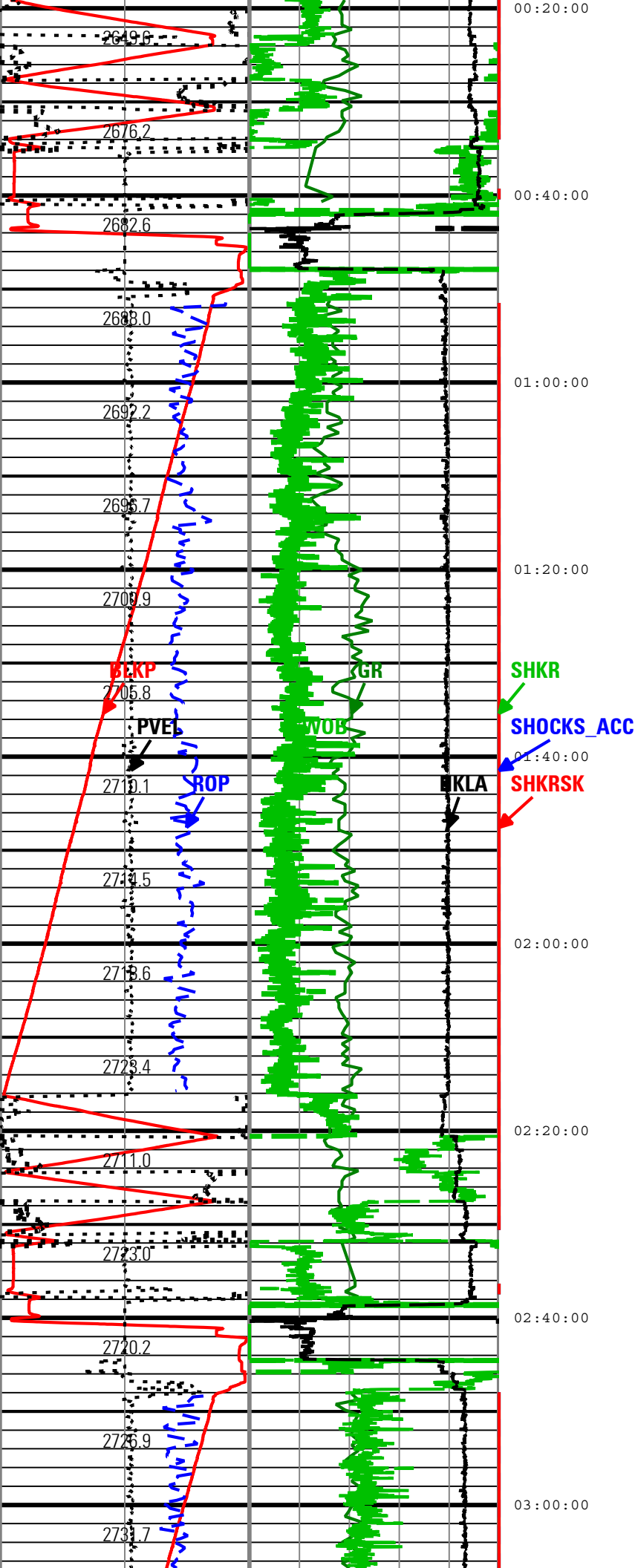


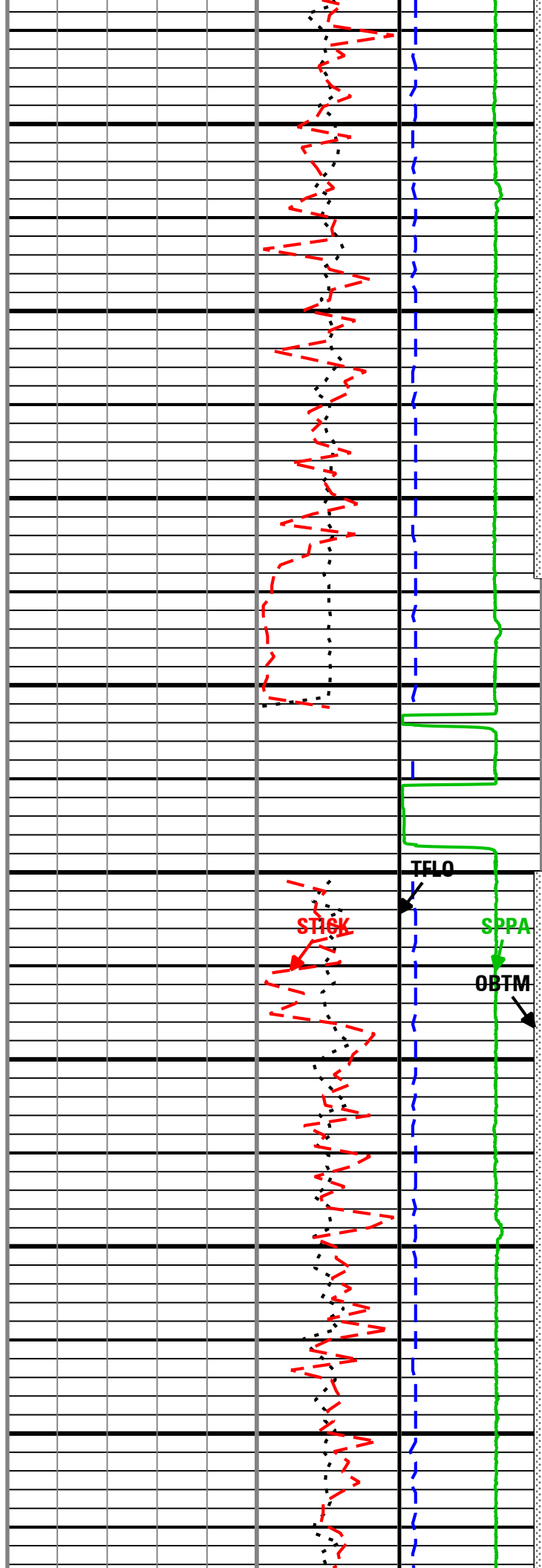
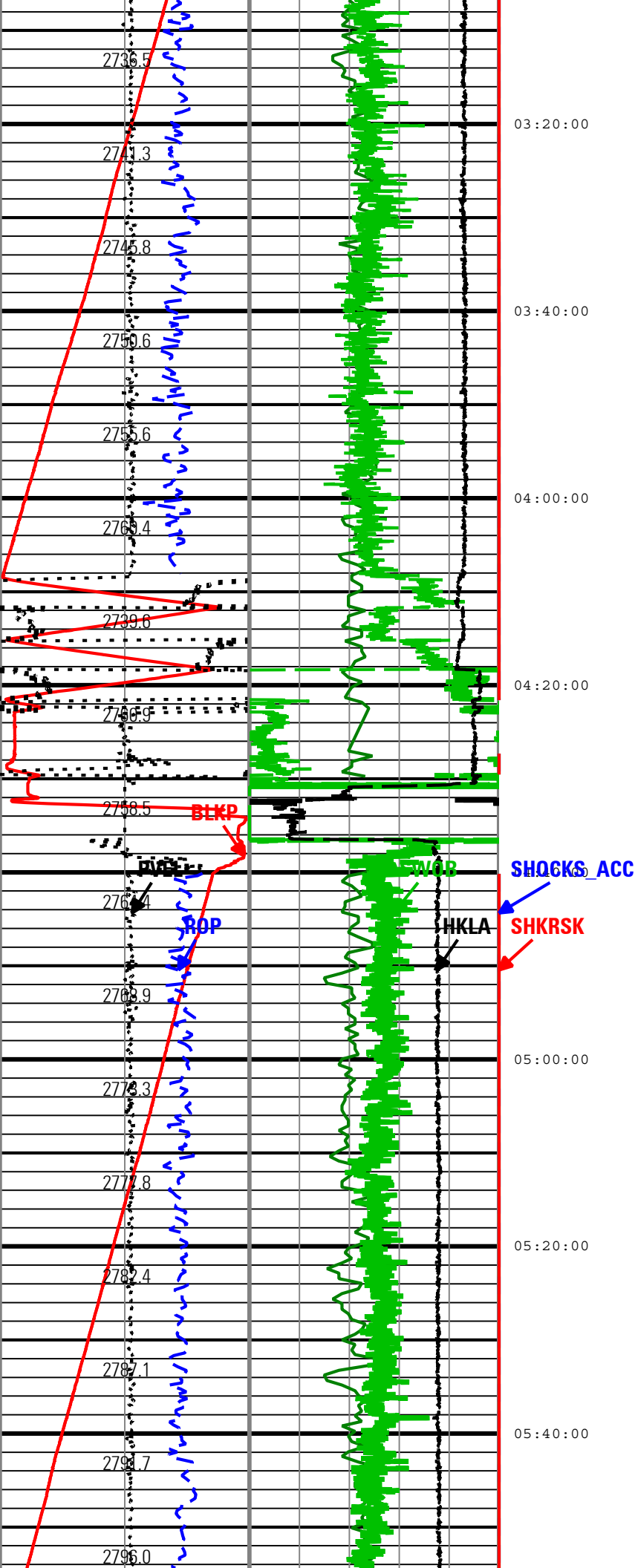


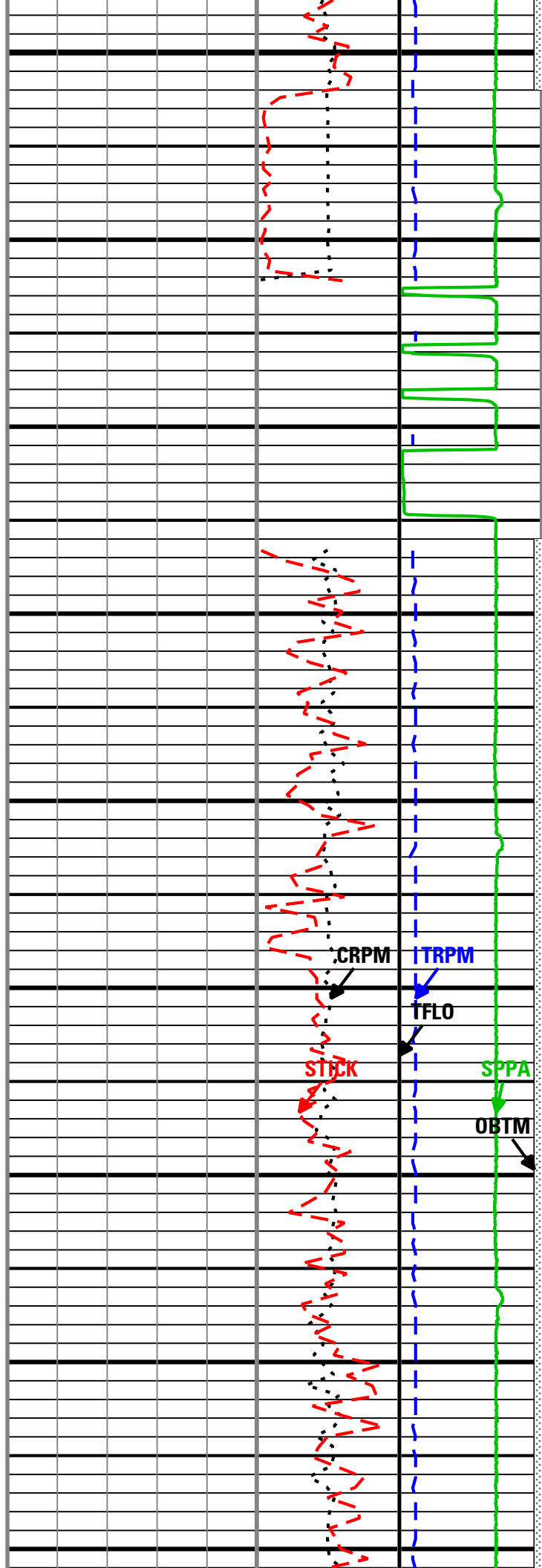
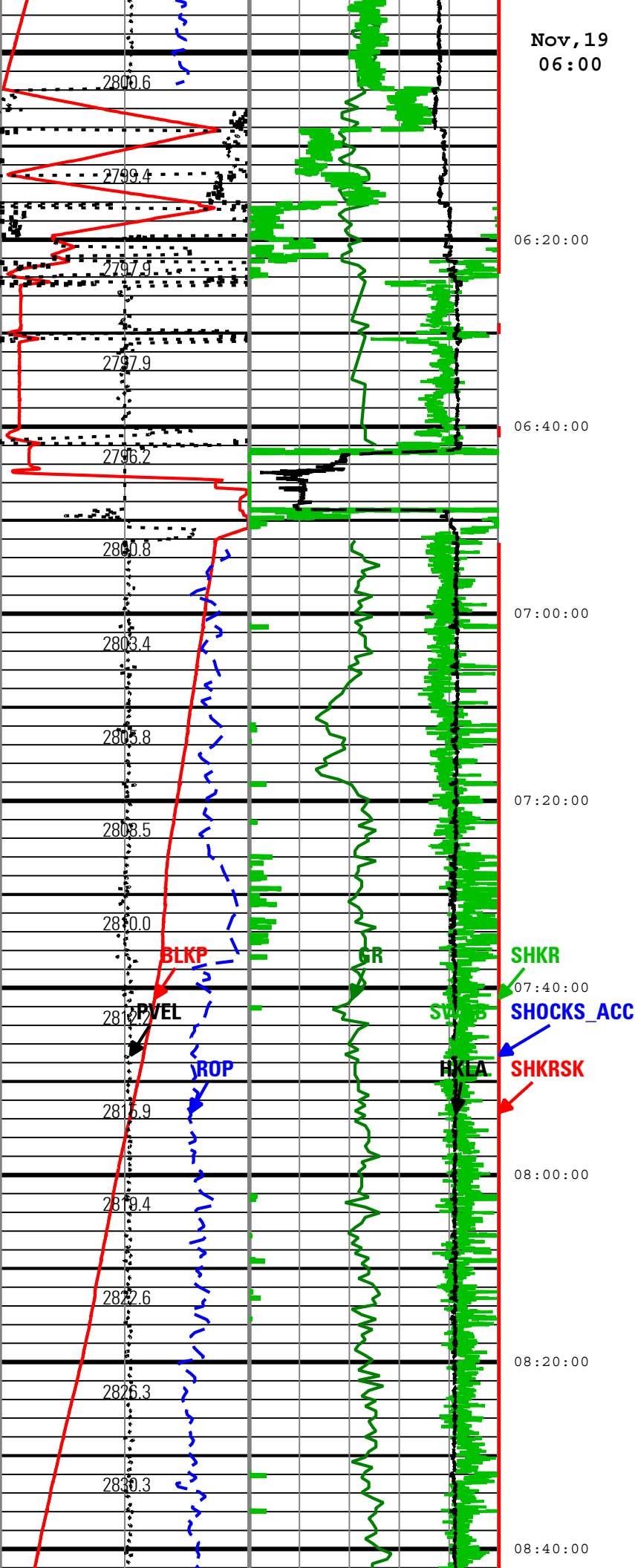


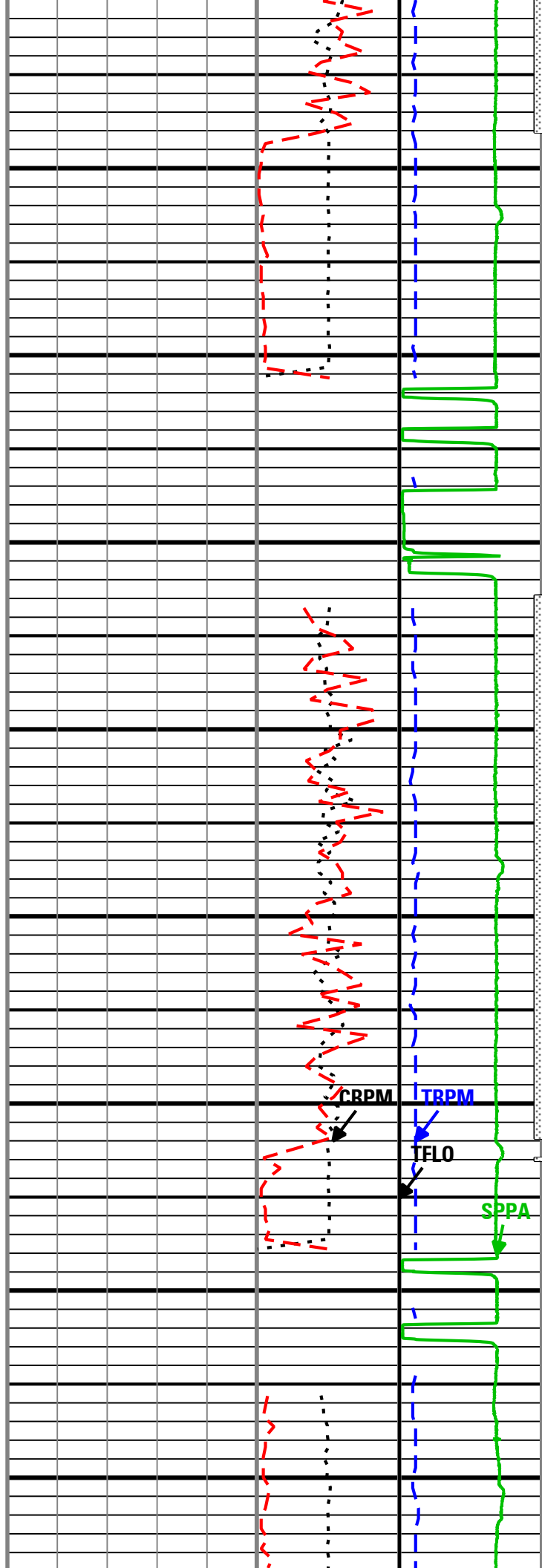
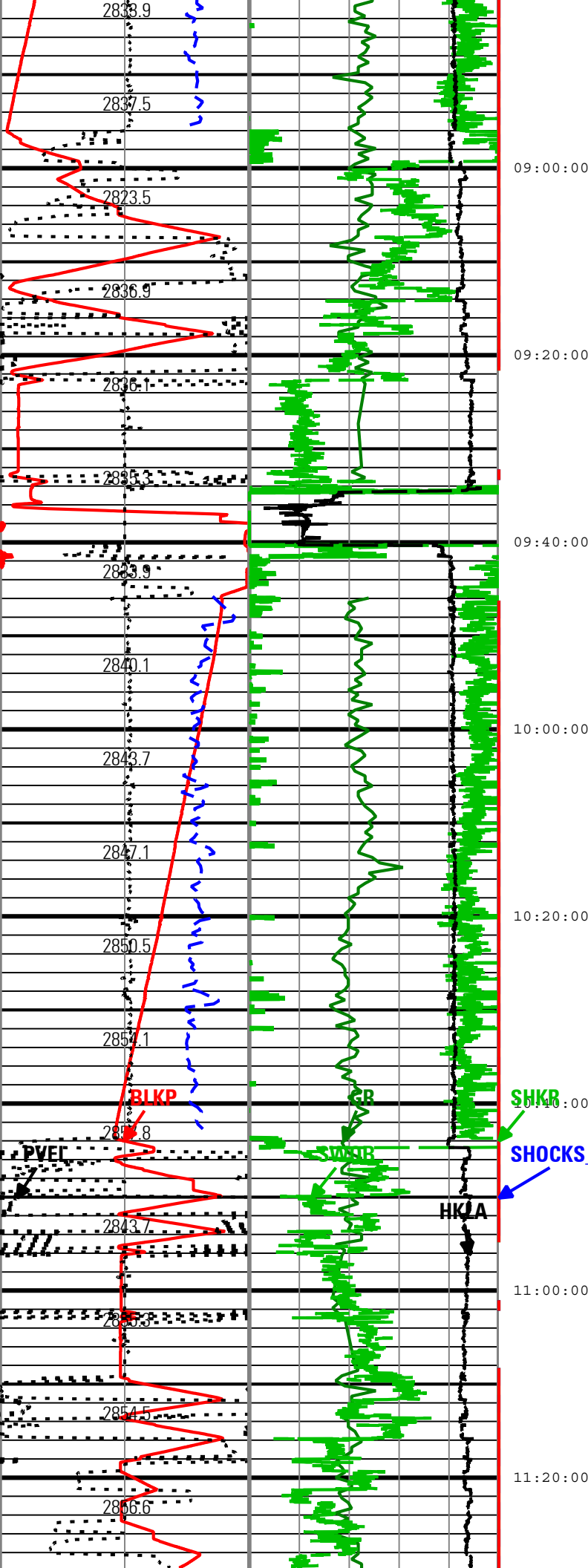


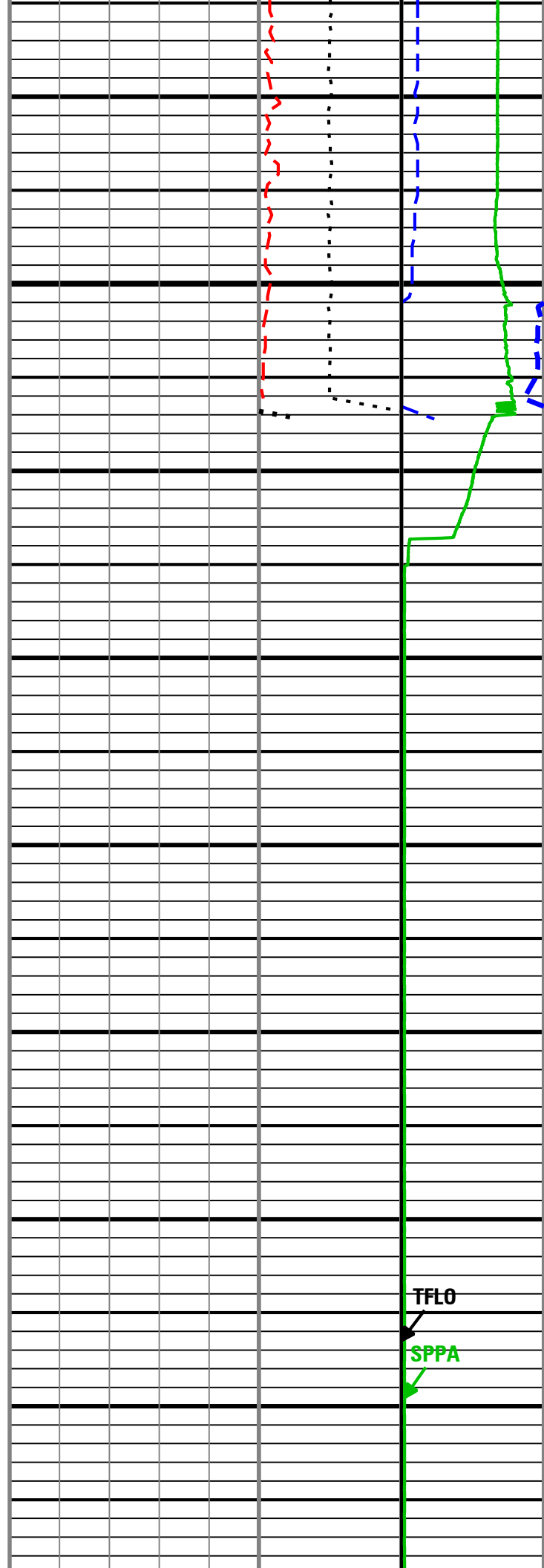
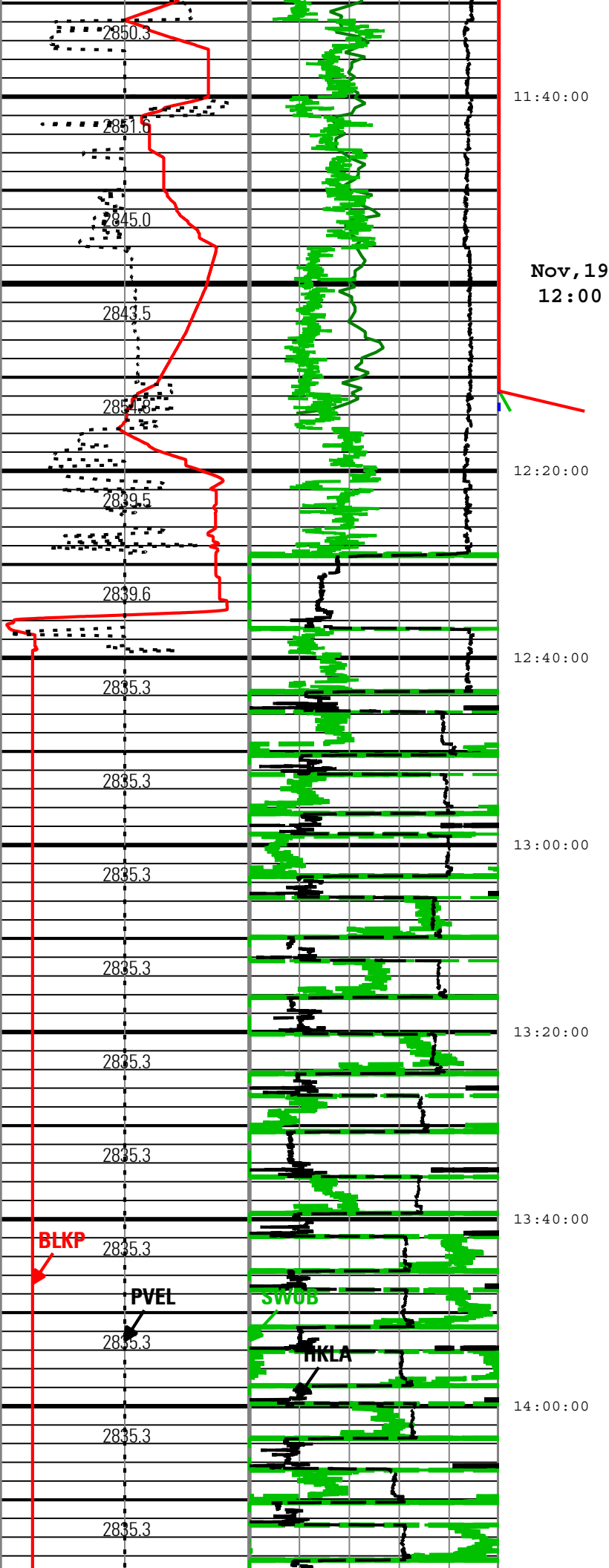


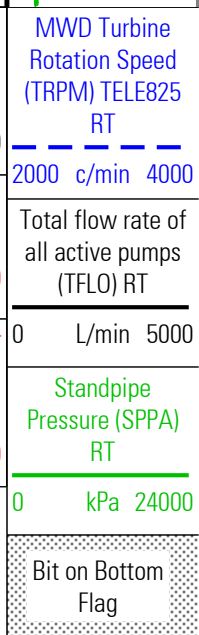
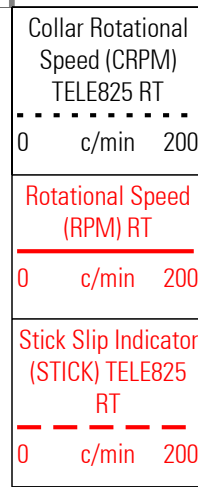
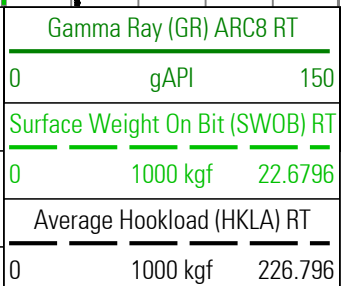
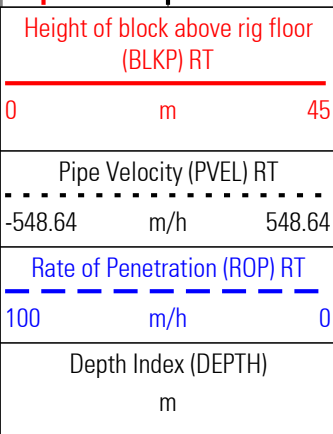
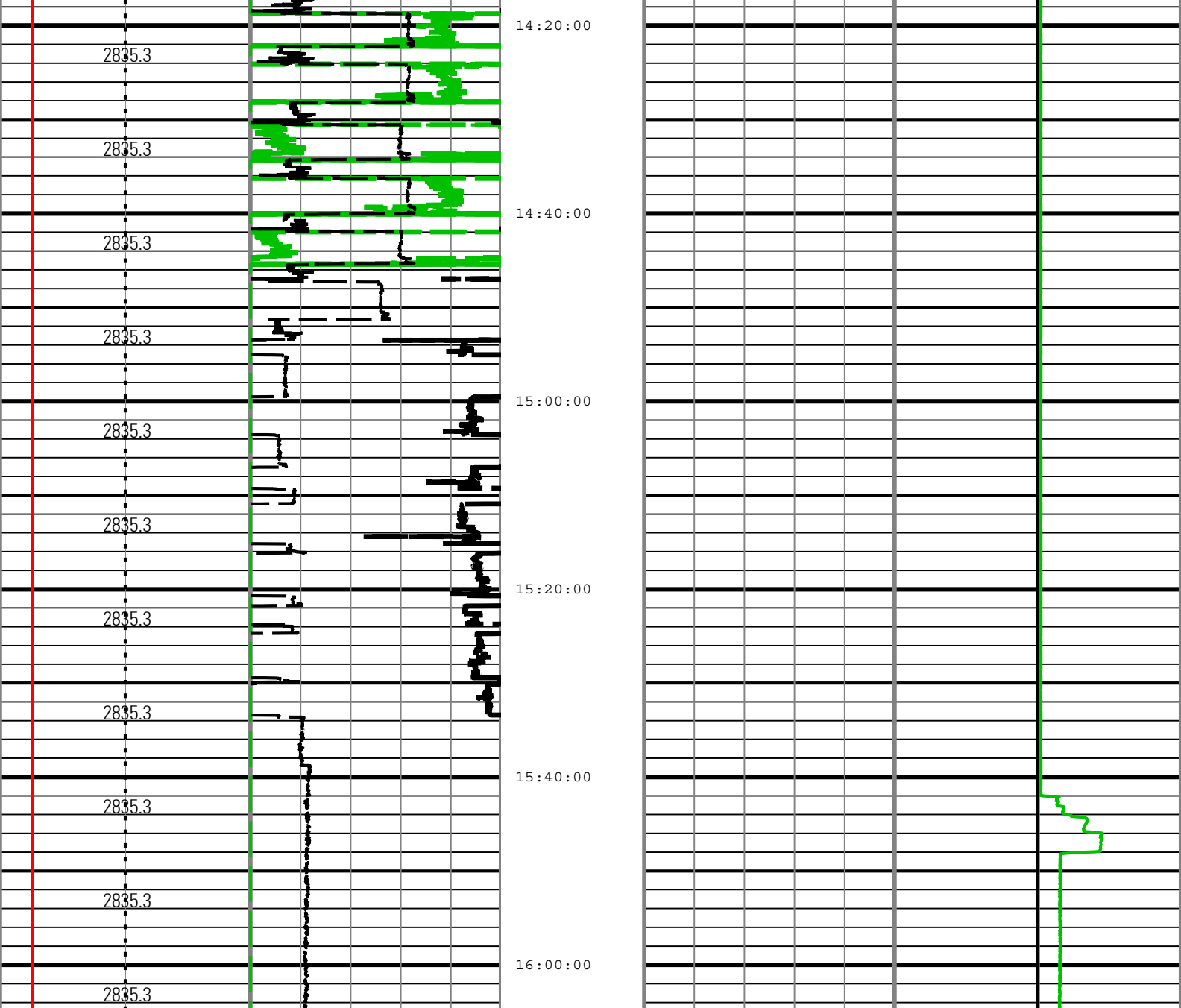












Description: TeleScope Drilling Mechanics Time RT Format: Log (TeleScope Drilling Mechanics Time RT) Index Scale: 10 cm per 3600 s Index Type: Time
 Creation Date: 20-Nov-2010 04:56:06

Channel Processing Parameters

| Parameter | Description | ToolPath | Value | Unit |
|-----------|-------------|----------|-------|------|
|-----------|-------------|----------|-------|------|

Tool Control Parameters

| Parameter | Description | ToolPath | Value | Unit |
|-----------|--|-------------|------------|------|
| OFFBTM_TH | Threshold for deciding whether the bit is off bottom | DnMWorkflow | Time Zoned | m |

Time Zone Parameters

| Parameter | Value | Start | Stop |
|-----------|-------|----------------------|----------------------|
| OFFBTM_TH | 0 | 16-Nov-2010 18:18:00 | 16-Nov-2010 18:18:48 |
| OFFBTM_TH | 0.3 | 16-Nov-2010 18:18:48 | 19-Nov-2010 16:05:03 |