

# Integration Summary

Output Channel(s)	Output Description	Input Parameter	Output Value	Unit
-------------------	--------------------	-----------------	--------------	------

## Software Version

Acquisition System	Version
MaxWell	2.0.6803.0

Computation	Description	Version
ARC8GammaRayComputation	ARC8 Gamma Ray Computation Package for both Real-time and Recorded Mode	2.0.6803.0
ARC8PressureComputation	ARC8 Pressure Computation Package for both Real-time and Recorded Mode	2.0.6803.0

Tool Elements	Description	Software Version	Firmware Version
ARDC	ARC 8.25 Inch Tool Drilling Collar	2.0.6803.0	V9.4B
DRILLING_SURFACE	DRILLING_SURFACE	2.0.6803.0	

## Pass Summary

Run Name	Pass Objective	Direction	Start	Stop	Acquisition Start Date	Acquisition Start Time
2	TimeLogicalAcq	Down	19-Nov-2010 16:32:41		19-Nov-2010	16:32:41

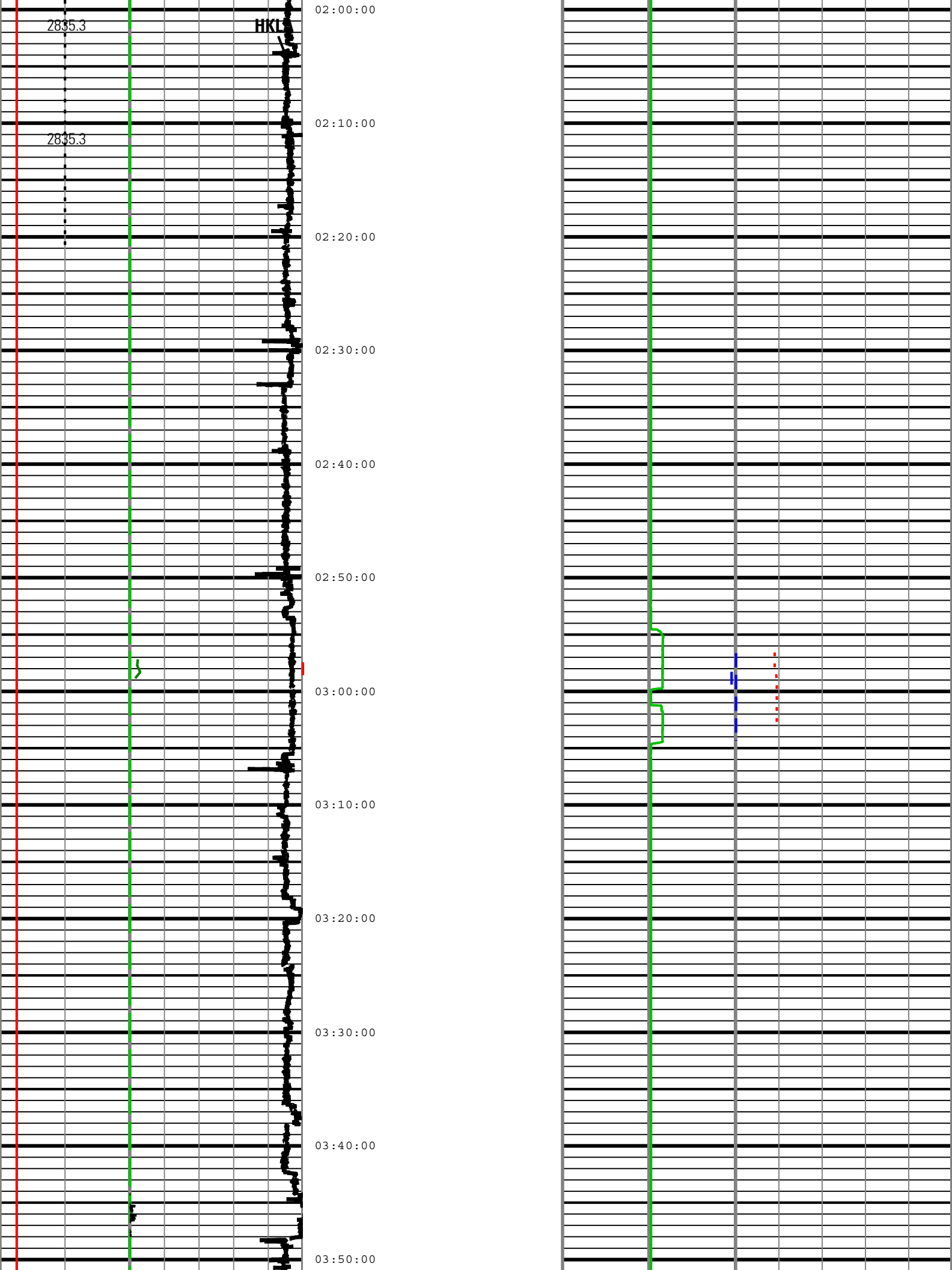
## Log

2: TimeLogicalAcq 8D83F30A-04C5-4C16-A606-535F683CCA26

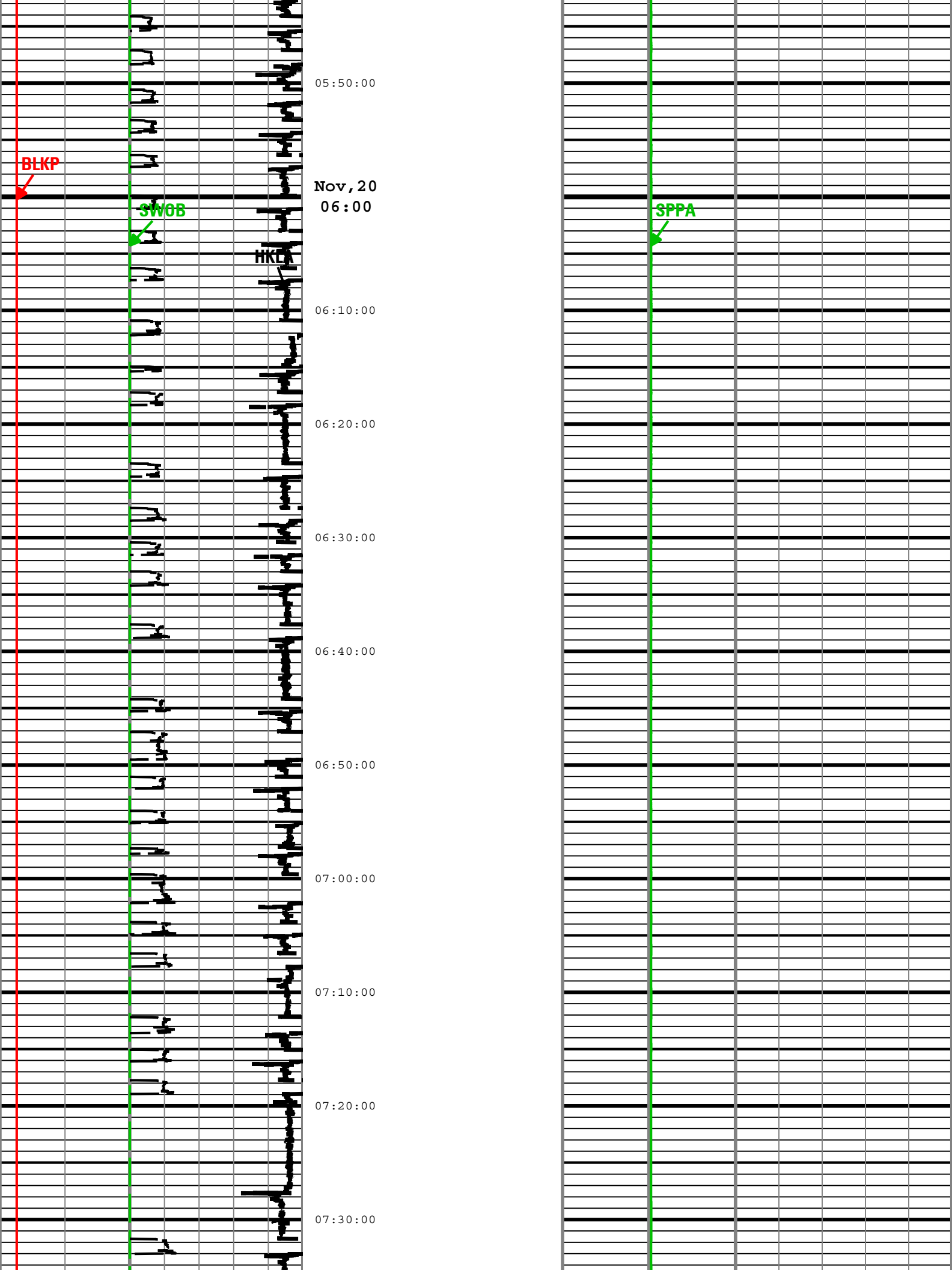
Description: TeleScope + ARC Drilling Mechanics Time RT Format: Log ( TeleScope + ARC Drilling Mechanics Time RT\_1 ) Index Scale: 15 cm per 3600 s Index T  
 Creation Date: 21-Nov-2010 11:54:10

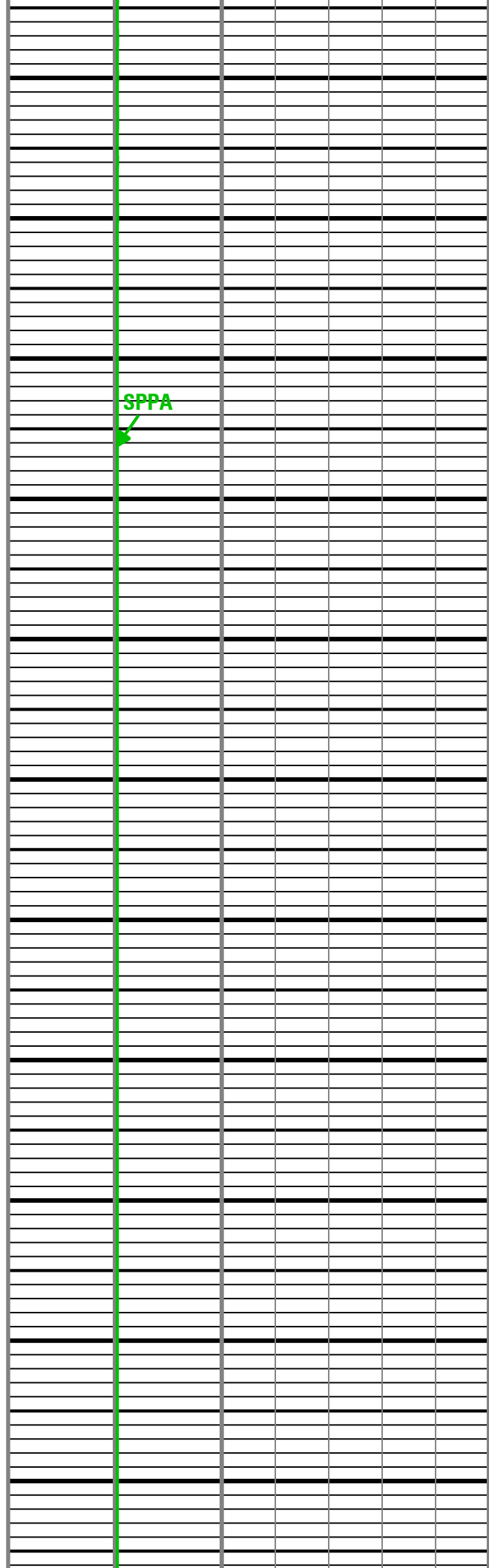
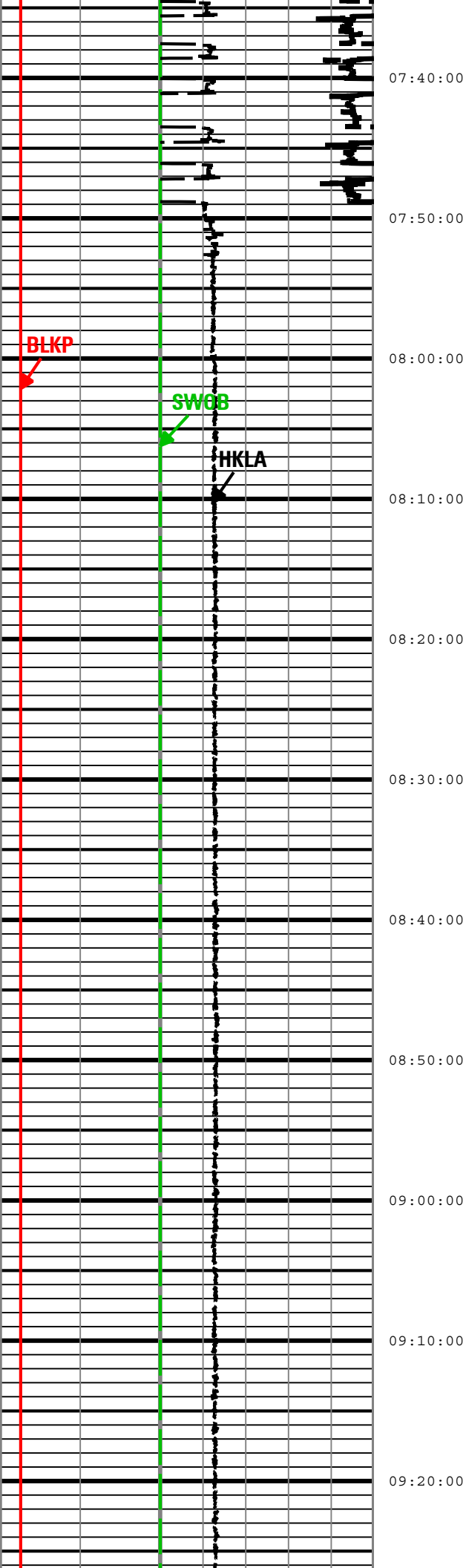
BLKP	DRILLING_SURFACE	ACQ - RT
CRPM	TELE825:TELE825	ACQ - RT
DEPTH	DnMWorkflow	ACQ - RT
DHAP	ARC8:ARC8	ACQ - RT
DHAT	ARC8:ARC8	ACQ - RT
ECD	ARC8:ARC8:ARDC	ACQ - RT
GR	ARC8:ARC8:ARDC	ACQ - RT
HKLA	DRILLING_SURFACE	ACQ - RT
OBTM	DnMWorkflow	ACQ
PVEL	DRILLING_SURFACE	ACQ - RT
ROP	DRILLING_SURFACE	ACQ - RT
SHKRSK	TELE825:TELE825	ACQ - RT
SPPA	DRILLING_SURFACE	ACQ - RT
STICK	TELE825:TELE825	ACQ - RT
SWOB	DRILLING_SURFACE	ACQ - RT
TRPM	TELE825:TELE825	ACQ - RT

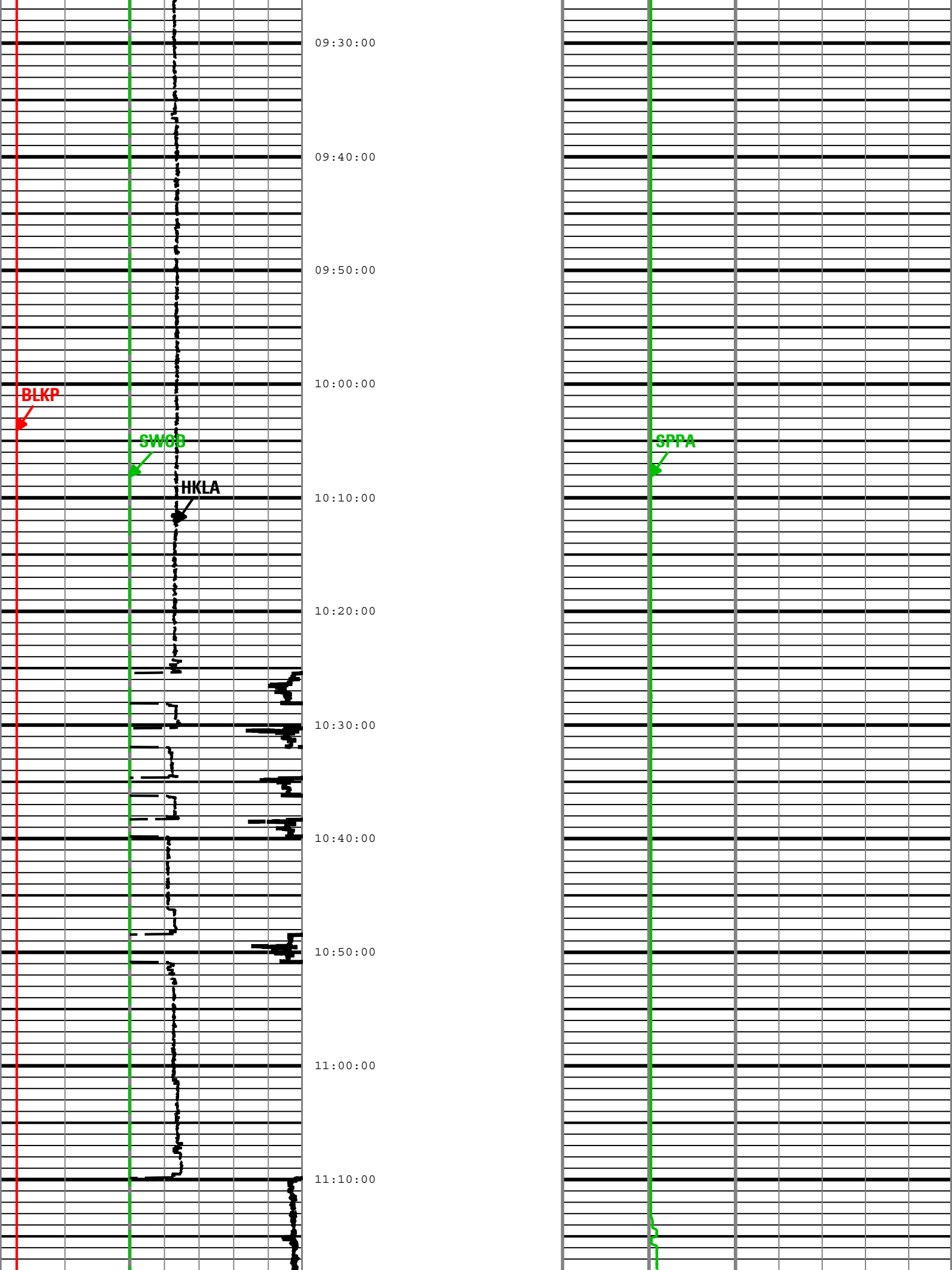
<b>Height of block above rig floor (BLKP) RT</b> <hr/> 0 m 45	<b>Gamma Ray (GR) ARC8 RT</b> <hr/> 0 gAPI 150	<b>Shock Risk (SHKRSK) TELE825 RT</b> <hr/> 0 5	<b>Collar Rotational Speed (CRPM) TELE825 RT</b> <hr/> 0 c/min 200	<b>MWD Turbine Rotation Speed (TRPM) TELE825 RT</b> <hr/> 1000 2000 c/min	<b>Equivalent Circulating Density (ECD) ARC8 RT</b> <hr/> 0.8 g/cm3 1.8
<b>Pipe Velocity (PVEL) RT</b> <hr/> 50 m/h -50	<b>Surface Weight On Bit (SWOB) RT</b> <hr/> 0 1000 kgf 22.6796				<b>Downhole Annulus Temperature (DHAT) ARC8 RT</b> <hr/> 0 degC 100
<b>Rate of Penetration (ROP) RT</b> <hr/> 100 m/h 0	<b>Average Hookload (HKLA) RT</b> <hr/> 0 1000 kgf 226.796		<b>Stick Slip Indicator (STICK) TELE825 RT</b> <hr/> 0 c/min 200	<b>Standpipe Pressure (SPPA) RT</b> <hr/> 0 24000 kPa	<b>Downhole Annulus Pressure (DHAP) ARC8 RT</b> <hr/> 0 kPa 60000
<b>Depth Index (DEPTH)</b> <hr/> m					Bit on Bottom Flag











09:30:00

09:40:00

09:50:00

10:00:00

10:10:00

10:20:00

10:30:00

10:40:00

10:50:00

11:00:00

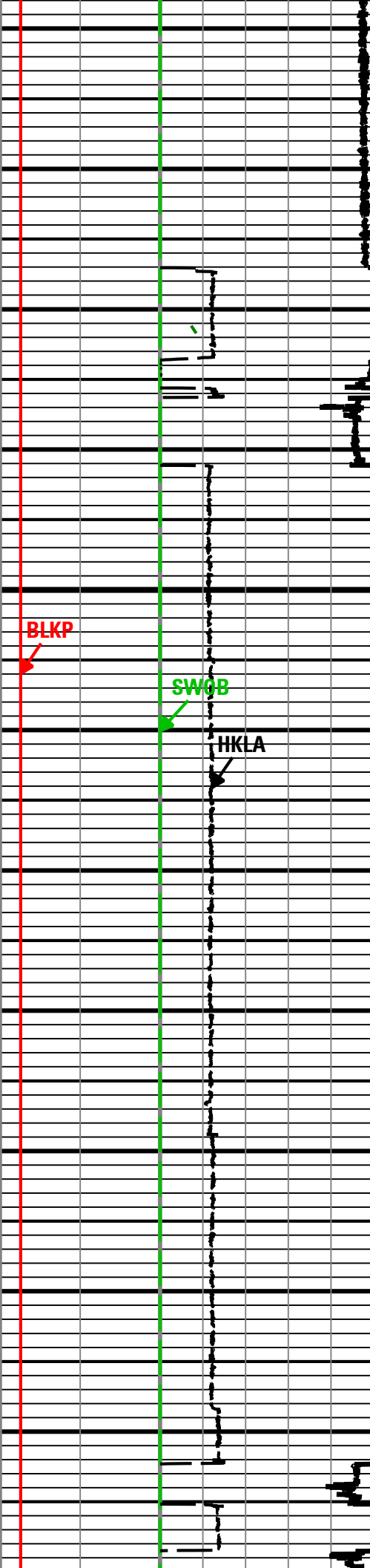
11:10:00

**BLKP**

**SWGB**

**HKLA**

**SPPA**



11:20:00

11:30:00

11:40:00

11:50:00

Nov, 20  
12:00

BLKP

SWGB

HKLA

12:10:00

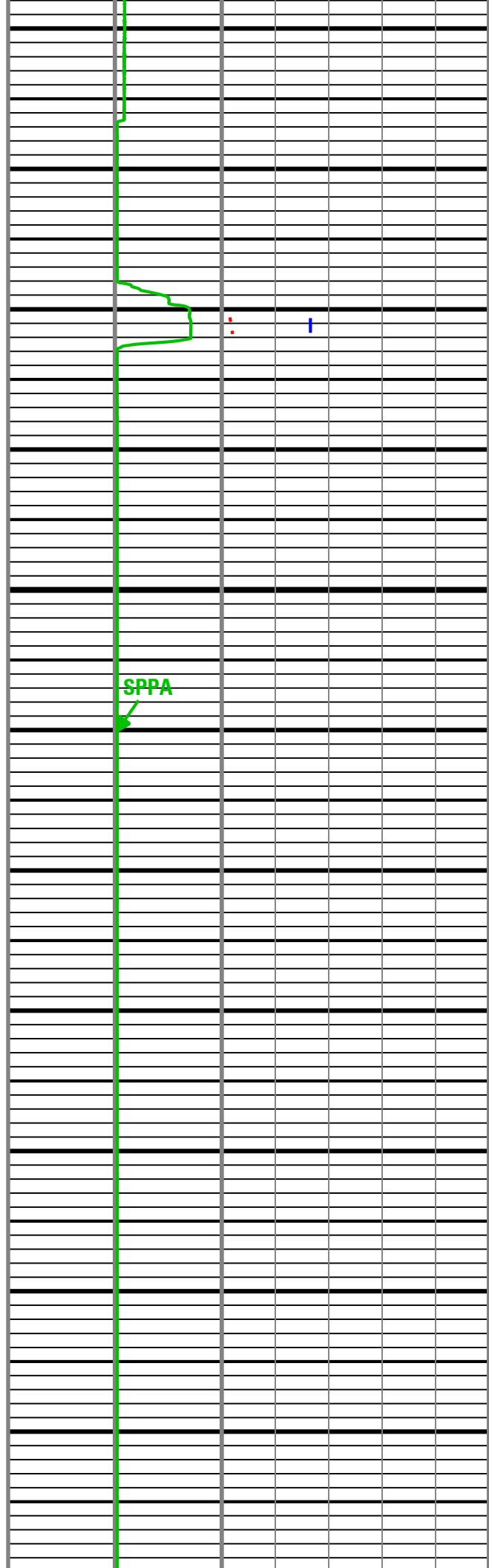
12:20:00

12:30:00

12:40:00

12:50:00

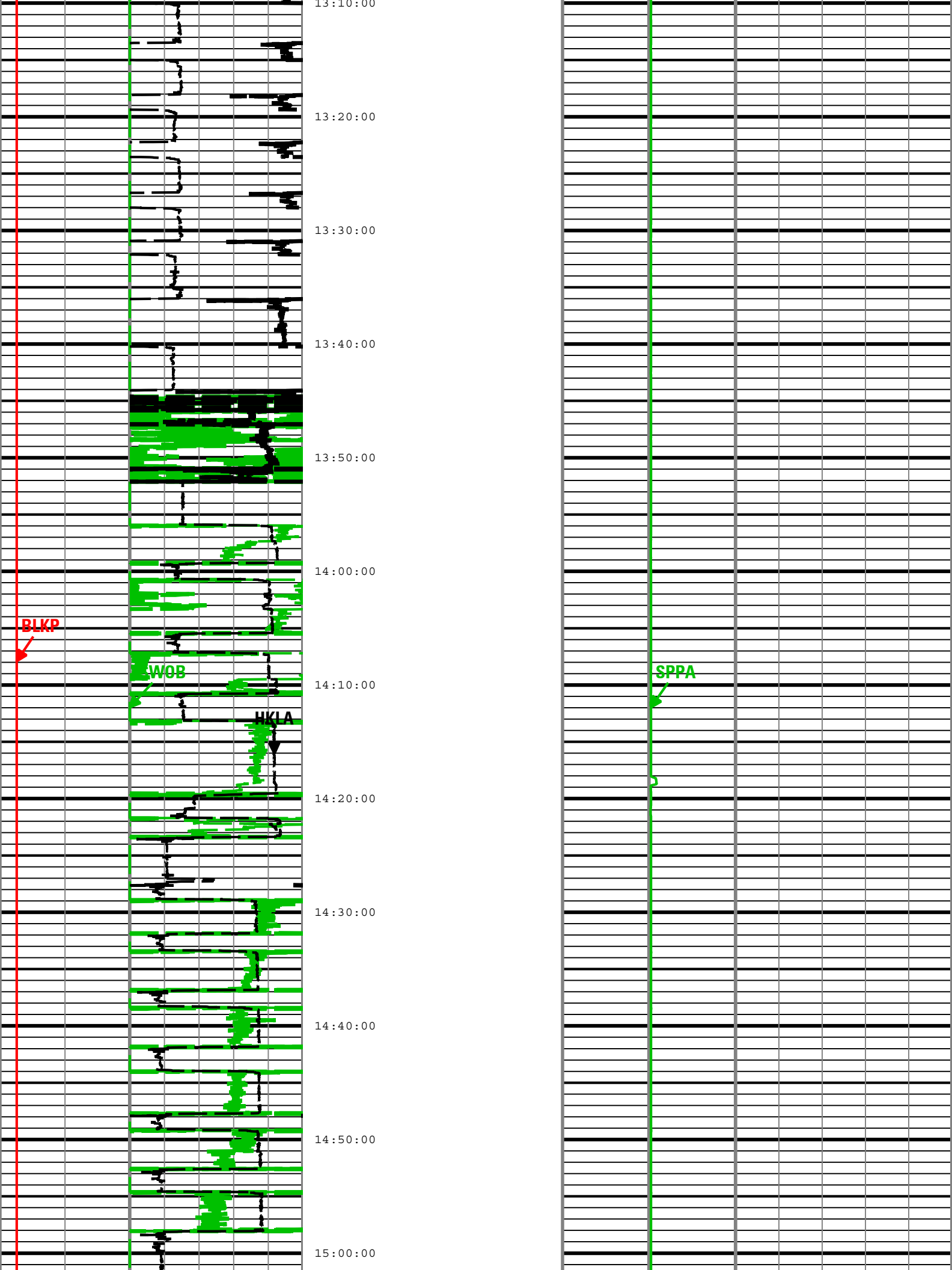
13:00:00



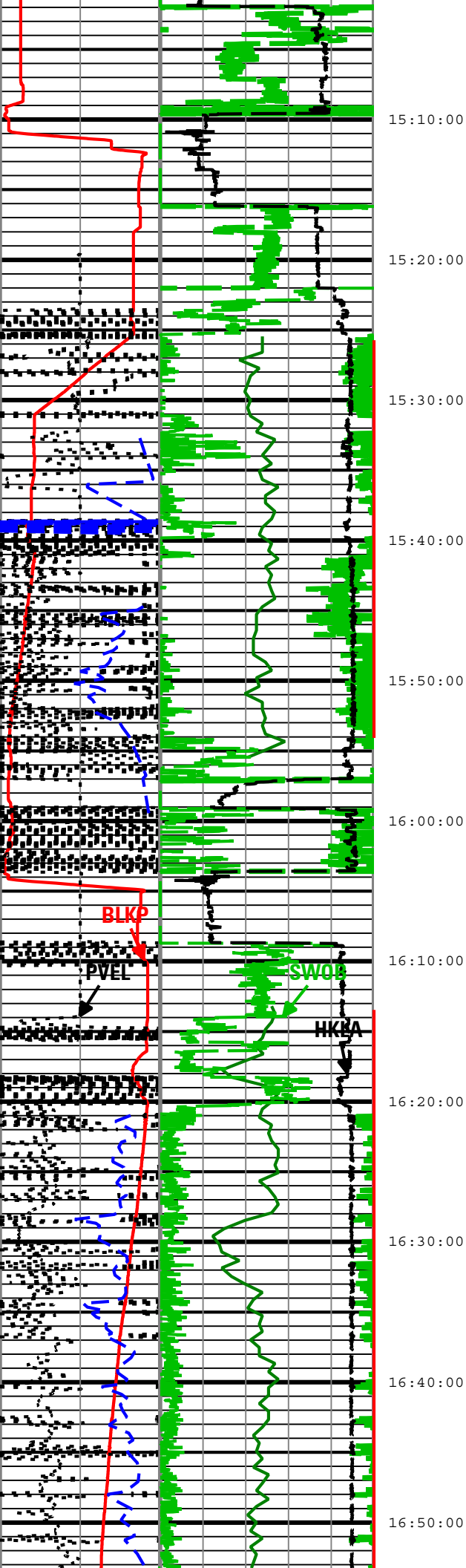
SPPA

.

|







15:10:00

15:20:00

15:30:00

15:40:00

15:50:00

16:00:00

16:10:00

16:20:00

16:30:00

16:40:00

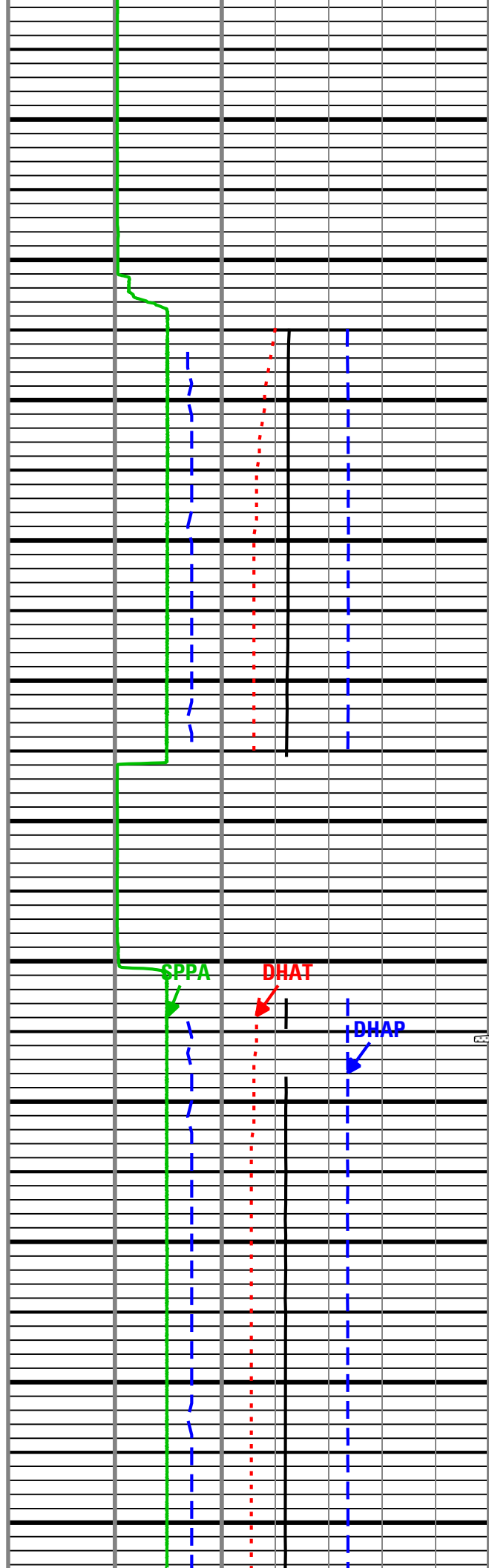
16:50:00

BLKP

PVEL

SWOB

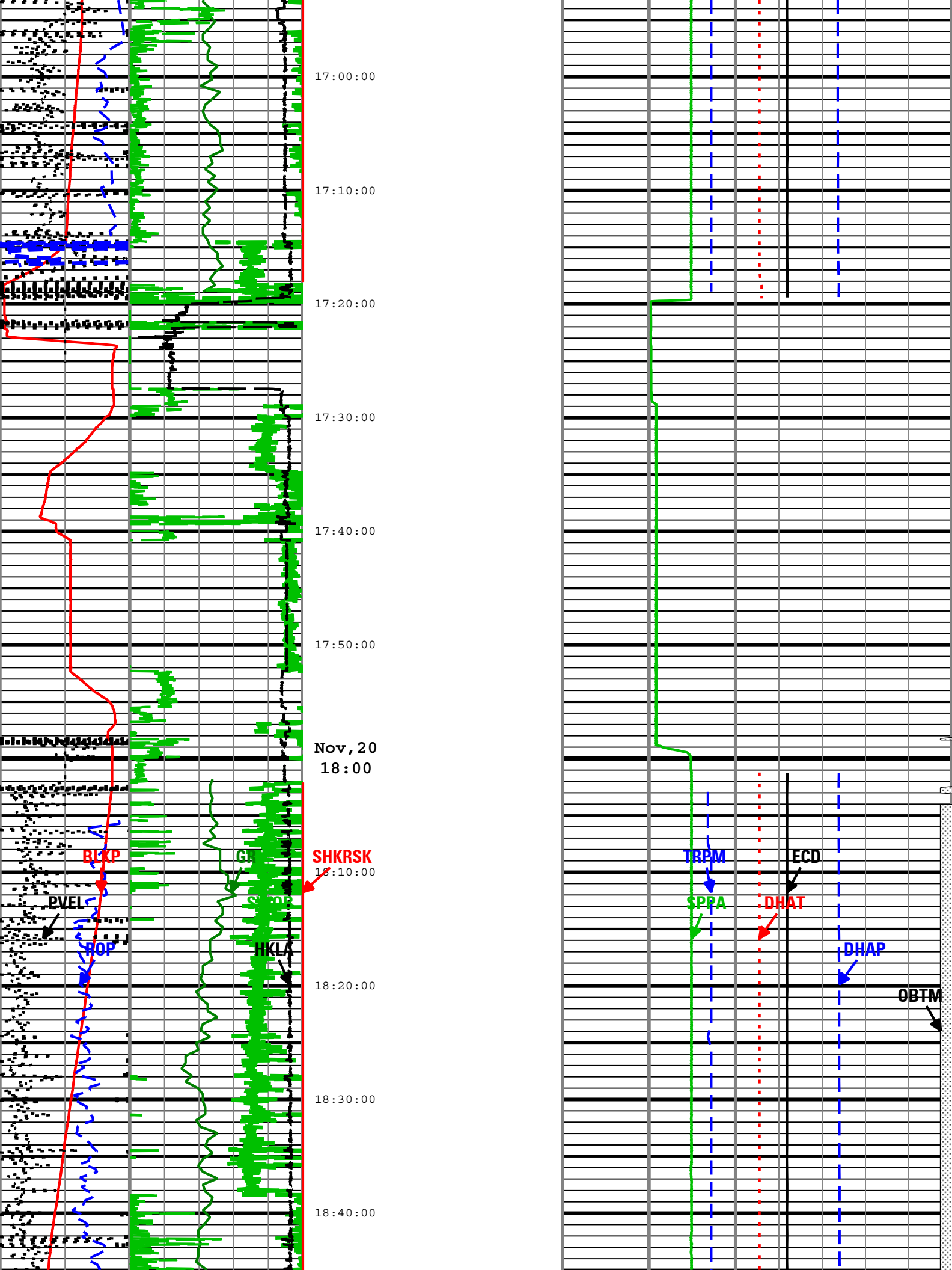
HKBA

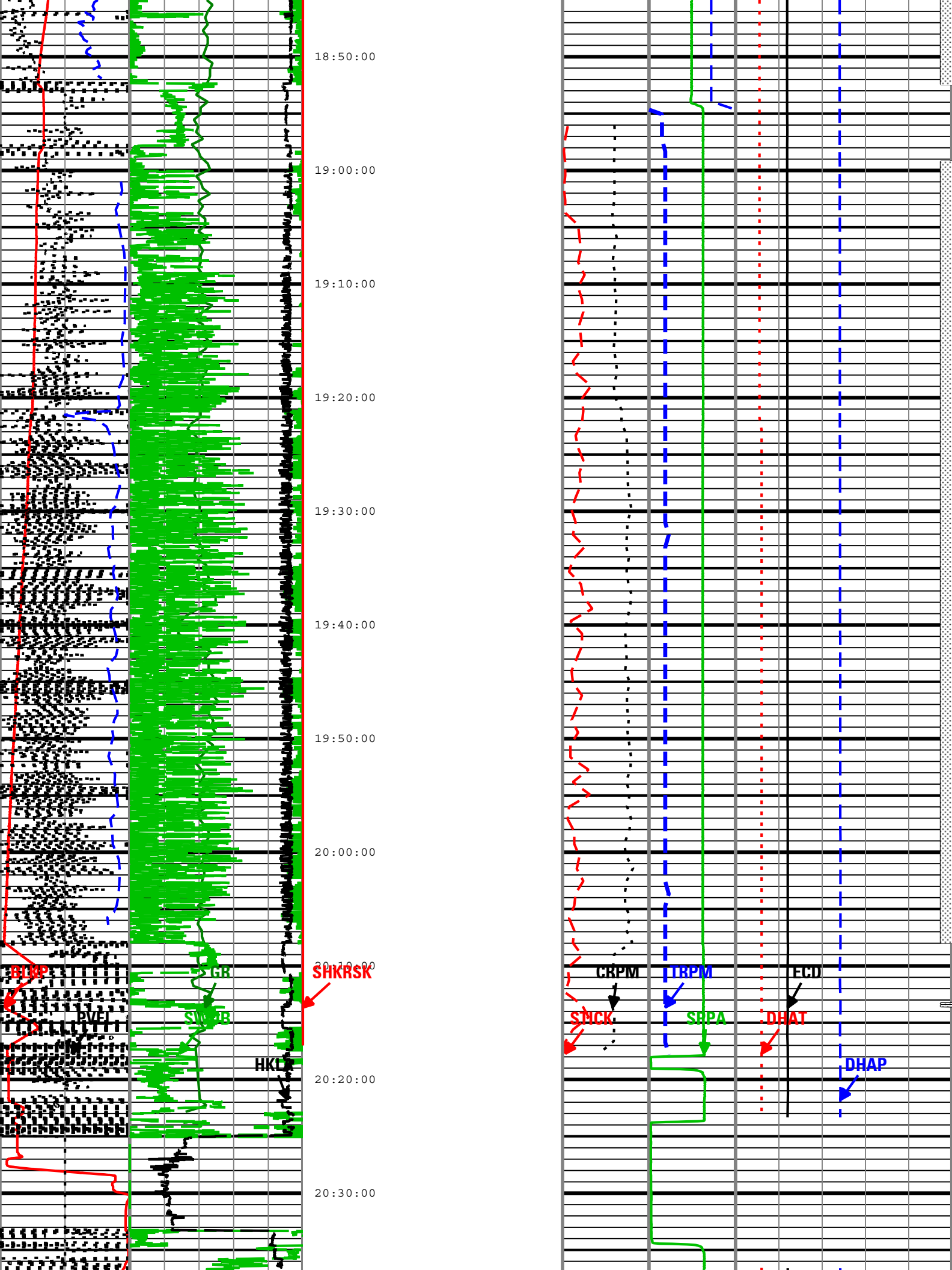


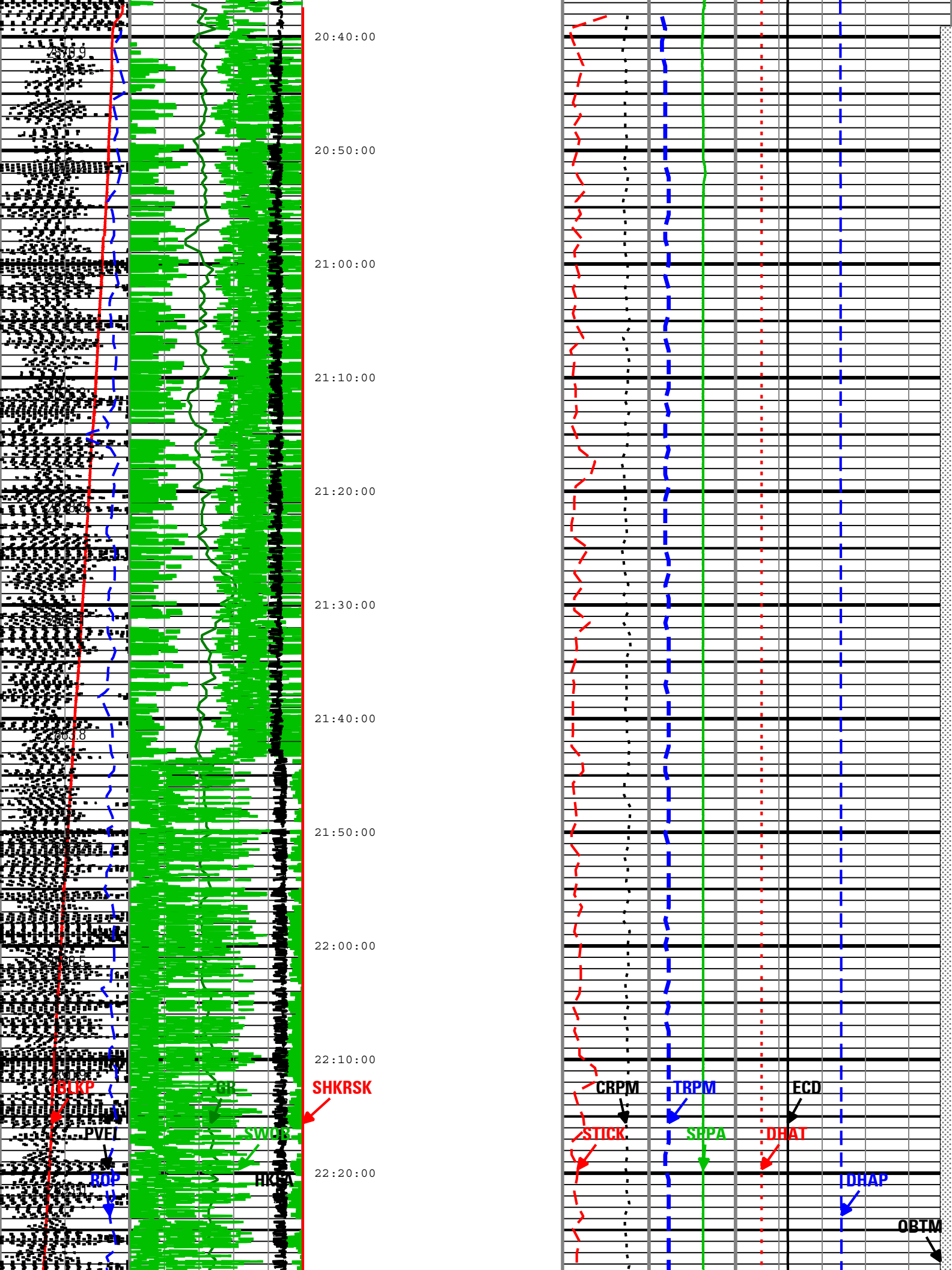
SPPA

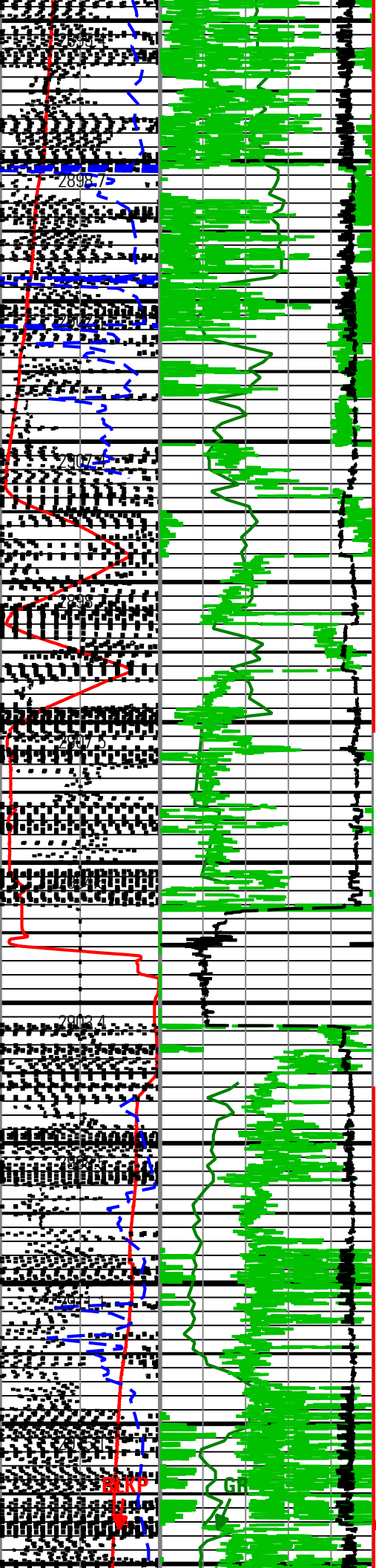
DHAT

DHAP



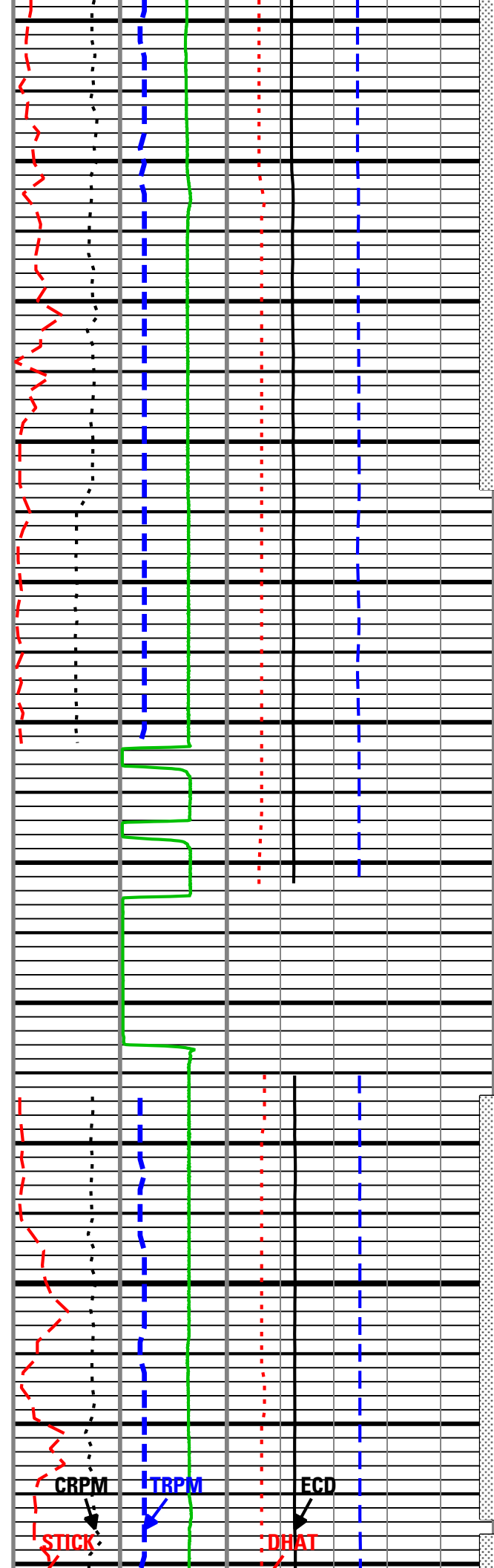






22:30:00  
22:40:00  
22:50:00  
23:00:00  
23:10:00  
23:20:00  
23:30:00  
23:40:00  
23:50:00  
Nov, 21  
00:00  
00:10:00  
00:20:00

SHKRSK



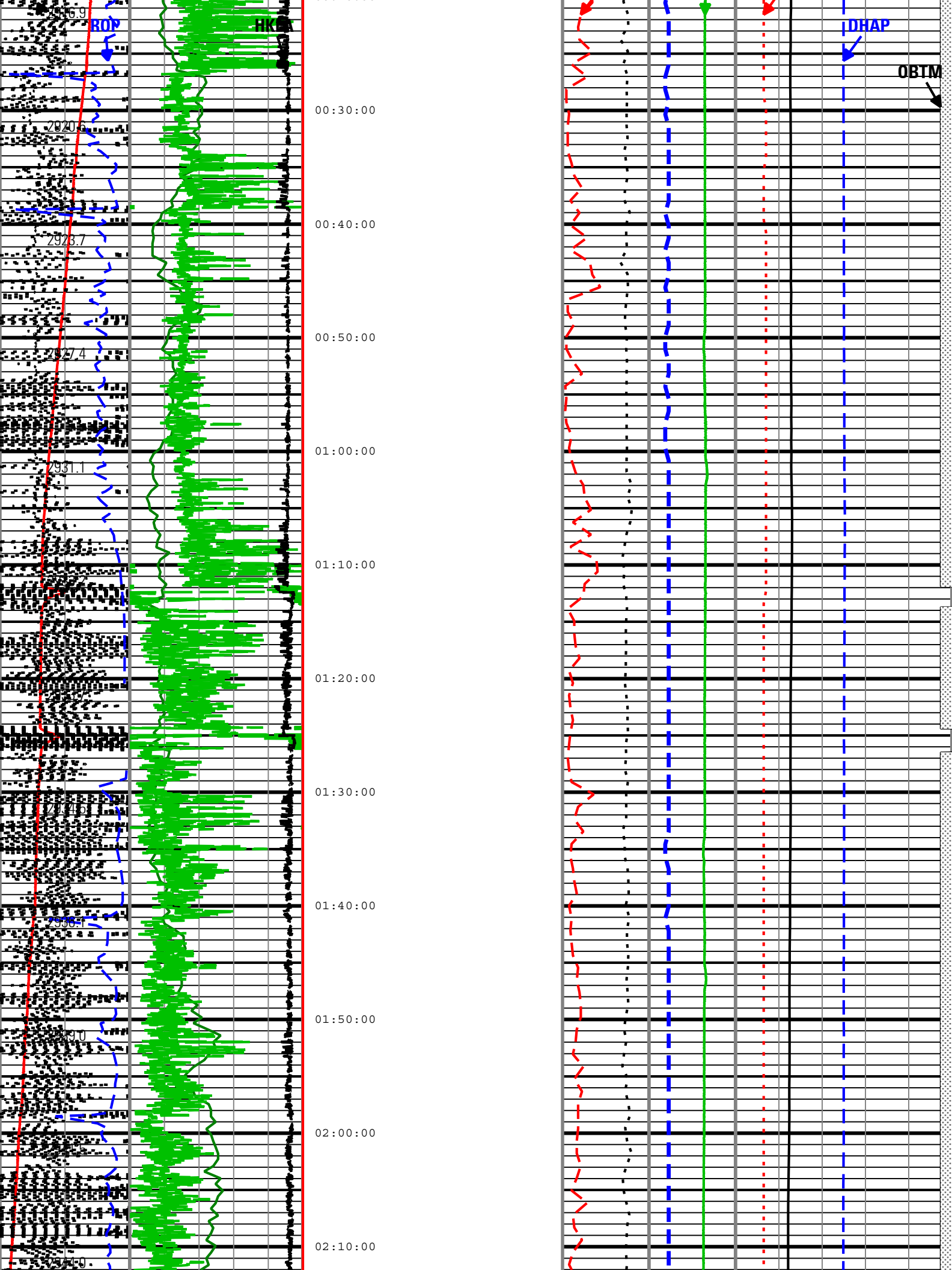
CRPM

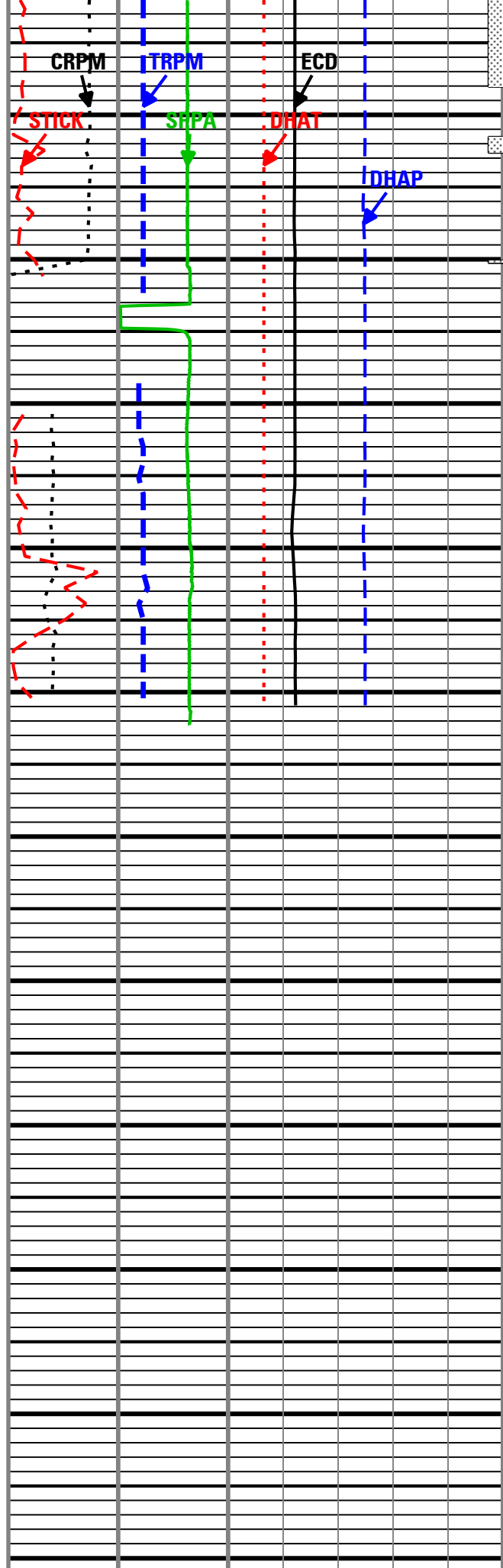
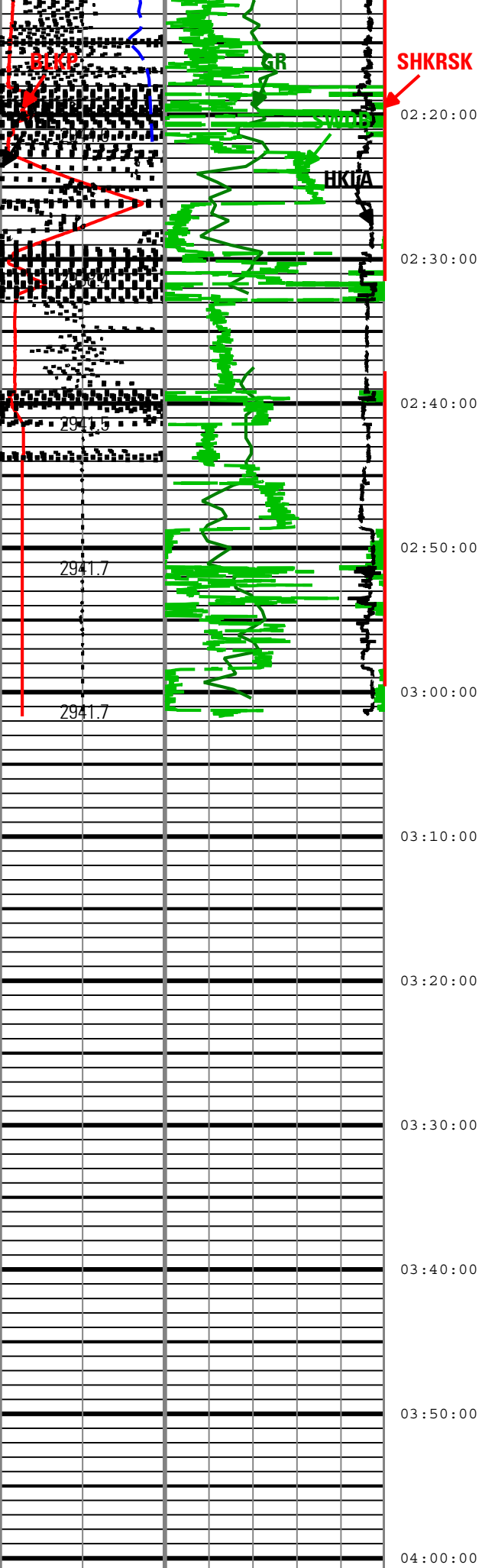
TRPM

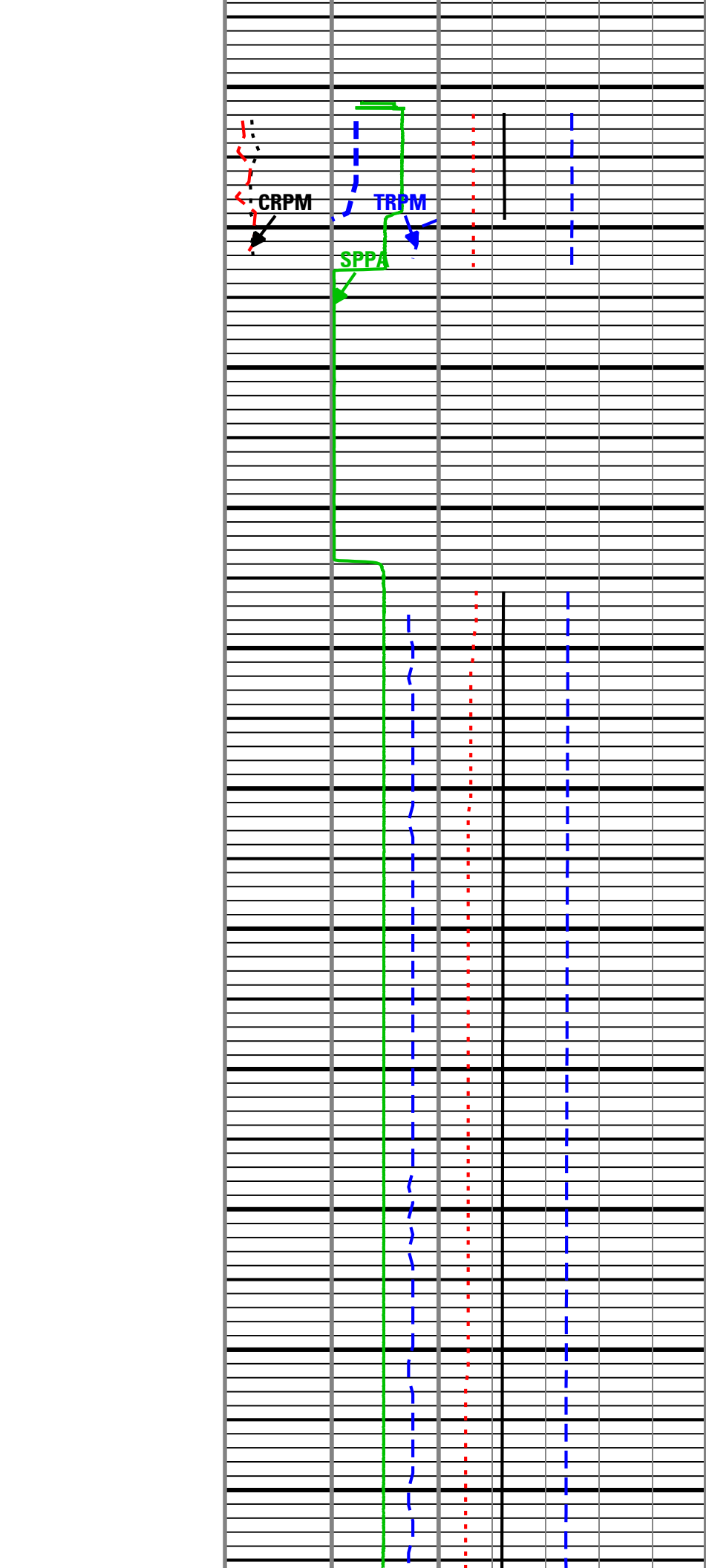
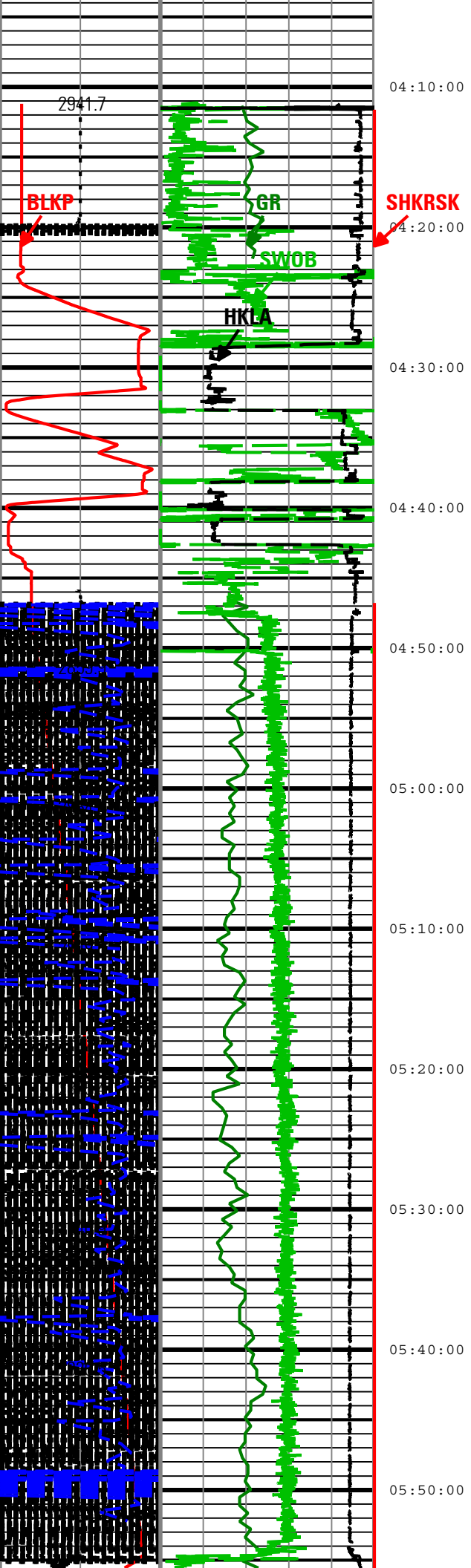
ECD

DHAT

STICK









Nov, 21  
06:00

06:10:00

06:20:00

06:30:00

06:40:00

06:50:00

07:00:00

07:10:00

07:20:00

07:30:00

07:40:00

2865.5

2865.5

2865.5

2865.5

2865.5

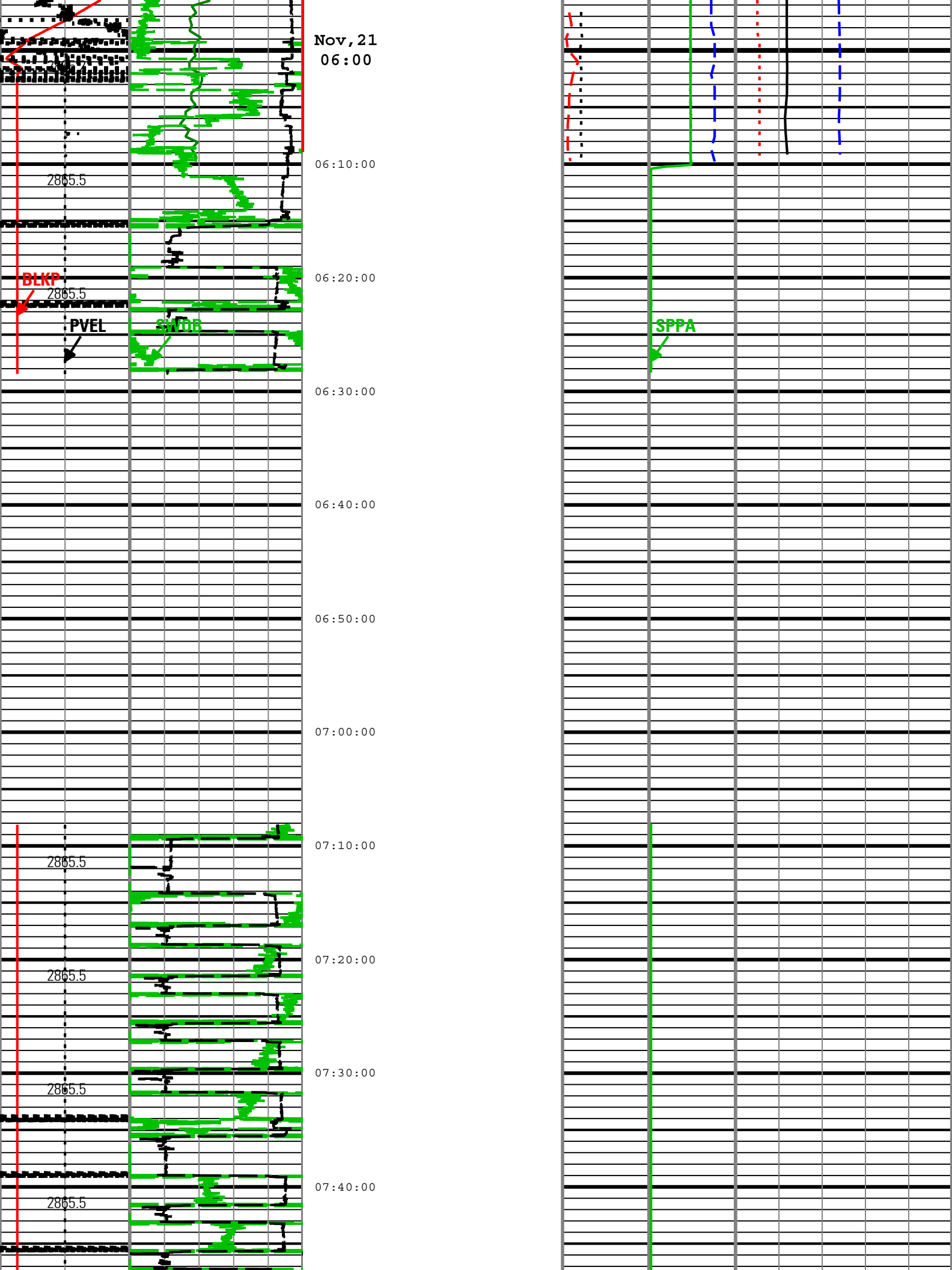
2865.5

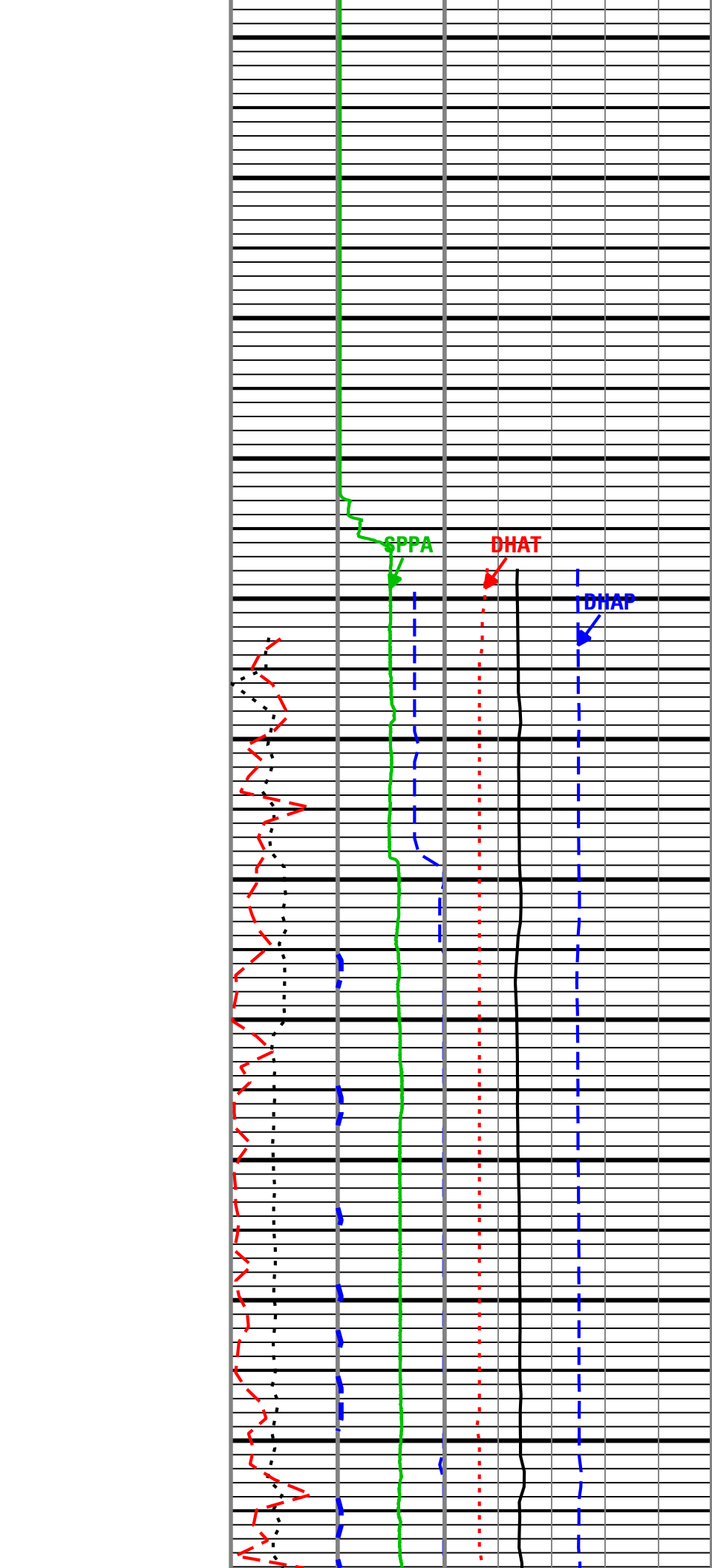
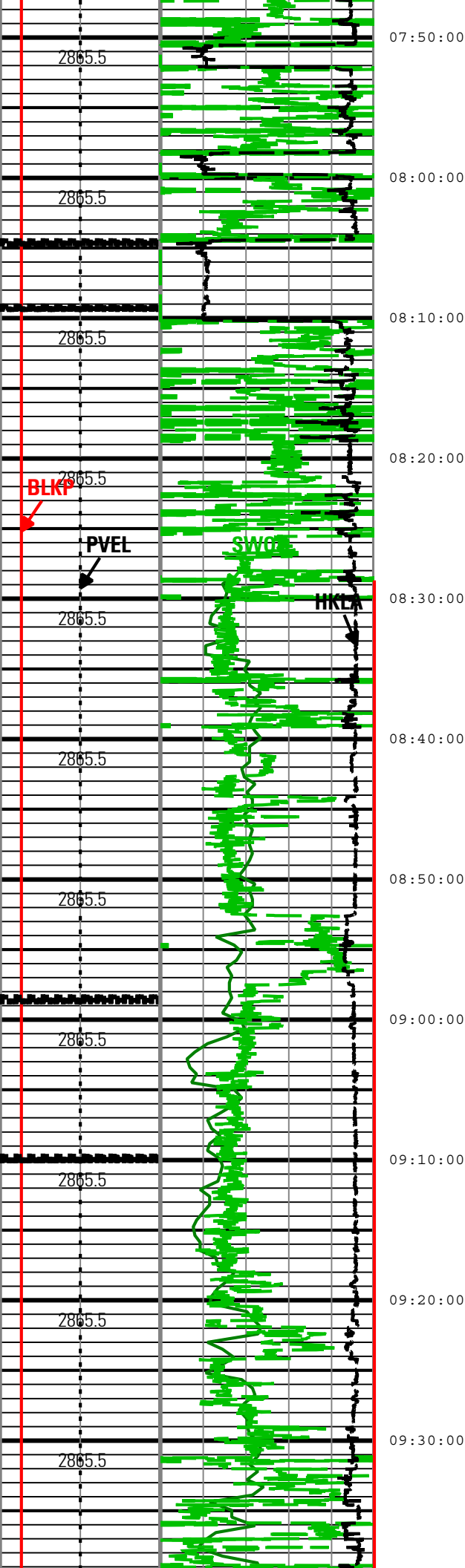
BLKP

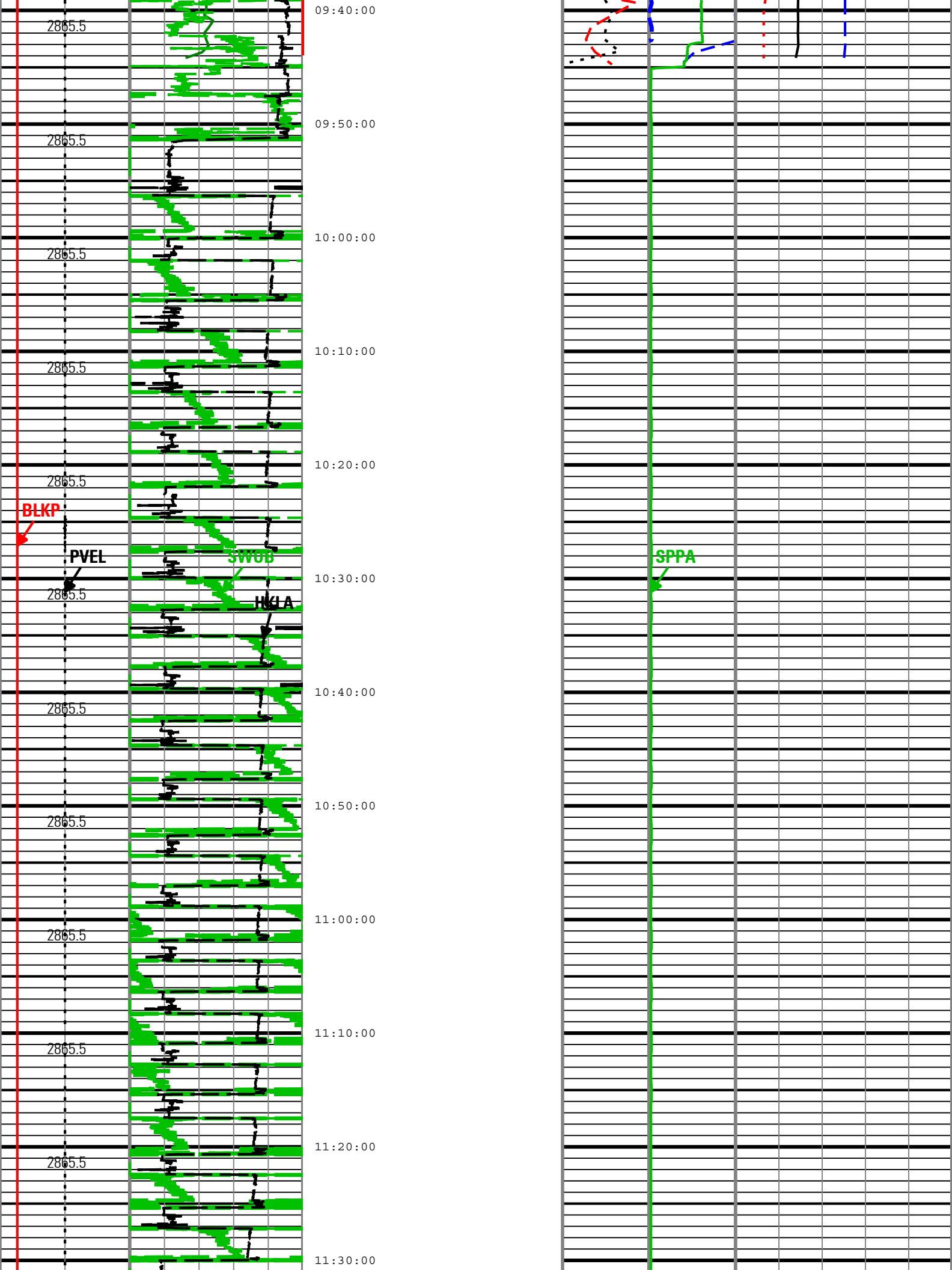
PVEL

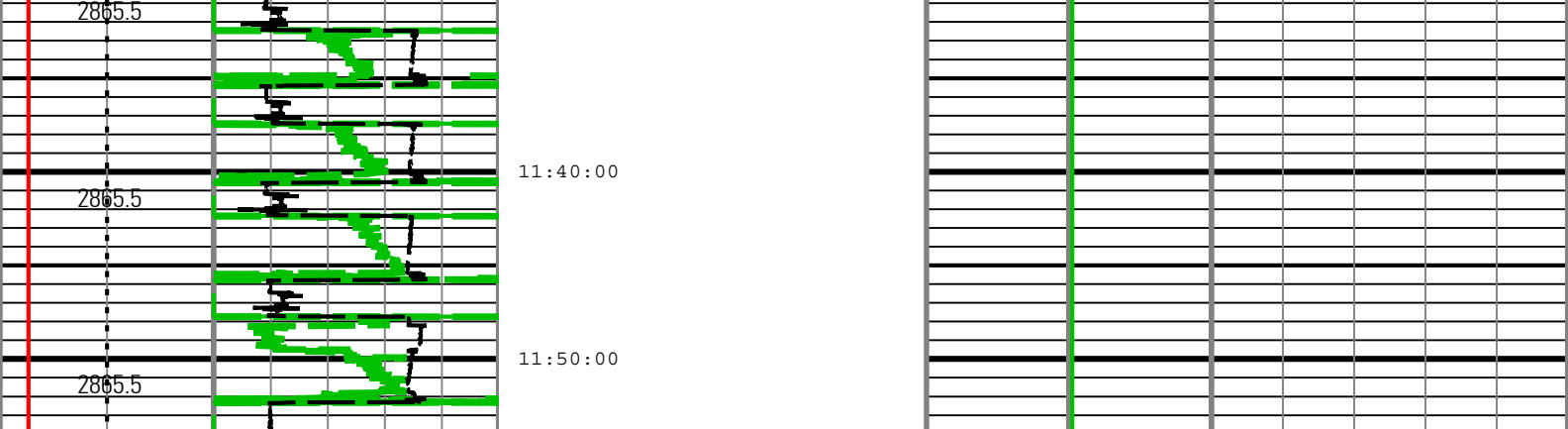
SVOB

SPPA









Height of block above rig floor (BLKP) RT 0 m 45
Pipe Velocity (PVEL) RT 50 m/h -50
Rate of Penetration (ROP) RT 100 m/h 0
Depth Index (DEPTH) m

Gamma Ray (GR) ARC8 RT 0 gAPI 150
Surface Weight On Bit (SWOB) RT 0 1000 kgf 22.6796
Average Hookload (HKLA) RT 0 1000 kgf 226.796

Shock Risk (SHKRSK) TELE825 RT 0 5
---------------------------------------

Collar Rotational Speed (CRPM) TELE825 RT 0 c/min 200
Stick Slip Indicator (STICK) TELE825 RT 0 c/min 200

MWD Turbine Rotation Speed (TRPM) TELE825 RT 1000 2000 c/min
Standpipe Pressure (SPPA) RT 0 24000 kPa

Equivalent Circulating Density (ECD) ARC8 RT 0.8 g/cm3 1.8
Downhole Annulus Temperature (DHAT) ARC8 RT 0 degC 100
Downhole Annulus Pressure (DHAP) ARC8 RT 0 kPa 60000
Bit on Bottom Flag

Description: TeleScope + ARC Drilling Mechanics Time RT Format: Log ( TeleScope + ARC Drilling Mechanics Time RT\_1 ) Index Scale: 15 cm per 3600 s Index T  
 Creation Date: 21-Nov-2010 11:54:10

Channel Processing Parameters				
Parameter	Description	ToolPath	Value	Unit
Tool Control Parameters				
Parameter	Description	ToolPath	Value	Unit
OFFBTM_TH	Threshold for deciding whether the bit is off bottom	DnMWorkflow	Time Zoned	m
Time Zone Parameters				
Parameter	Value	Start	Stop	
OFFBTM_TH	0	20-Nov-2010 01:56:22	20-Nov-2010 01:59:20	
OFFBTM_TH	0.3	20-Nov-2010 01:59:20	21-Nov-2010 11:54:08	