

# Integration Summary

Output Channel(s)	Output Description	Input Parameter	Output Value	Unit
-------------------	--------------------	-----------------	--------------	------

## Software Version

Acquisition System	Version
MaxWell	2.0.6803.0

Computation	Description	Version
ARC8GammaRayComputation	ARC8 Gamma Ray Computation Package for both Real-time and Recorded Mode	2.0.6803.0
ARCResistivity	ARC Resistivity Computation Package for ARC Tool Family	2.0.6803.0

Tool Elements	Description	Software Version	Firmware Version
ARDC	ARC 8.25 Inch Tool Drilling Collar	2.0.6803.0	V9.4B

## Composite Summary

Run Name	Pass Objective	Direction	Top	Bottom	Acquisition Start Date	Acquisition Start Time
1	Drilling	Down	2006.60 m	2857.75 m	17-Nov-2010	09:17:52
2	Drilling	Down	2857.78 m		19-Nov-2010	16:32:41
2	Ream Up 1	Up	2831.59 m	2861.79 m	21-Nov-2010	04:46:24

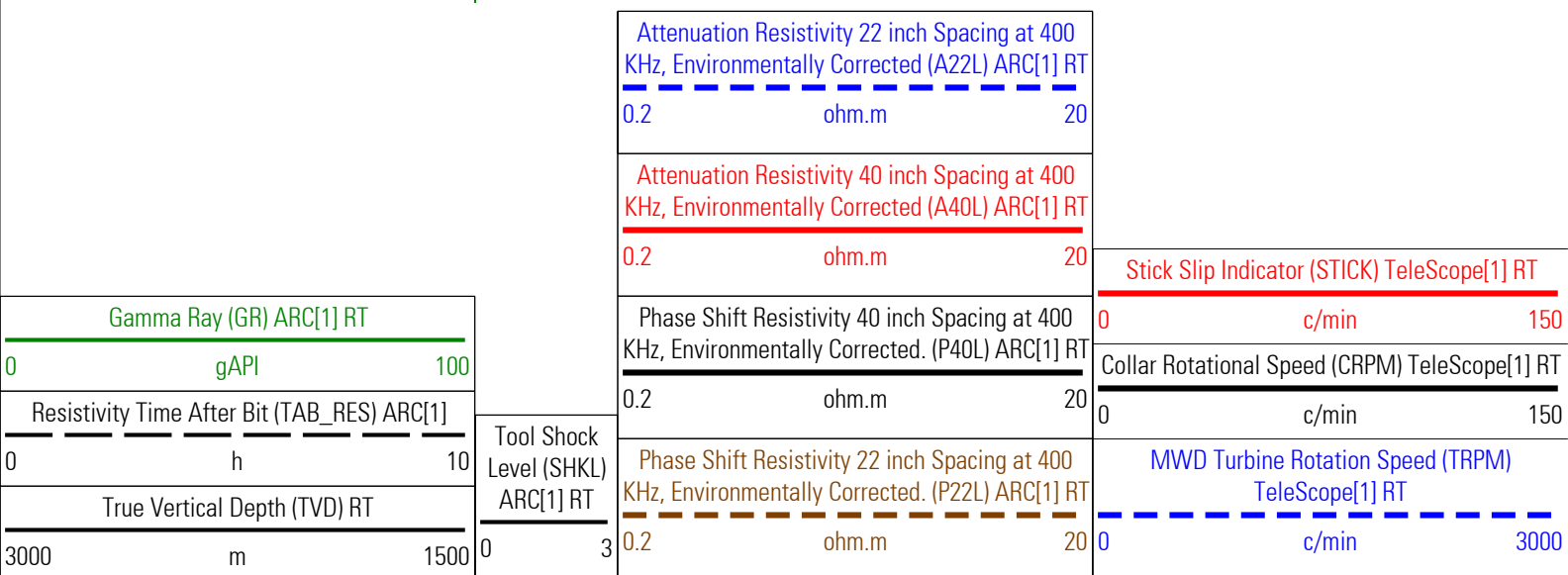
All depths are referenced to toolstring zero

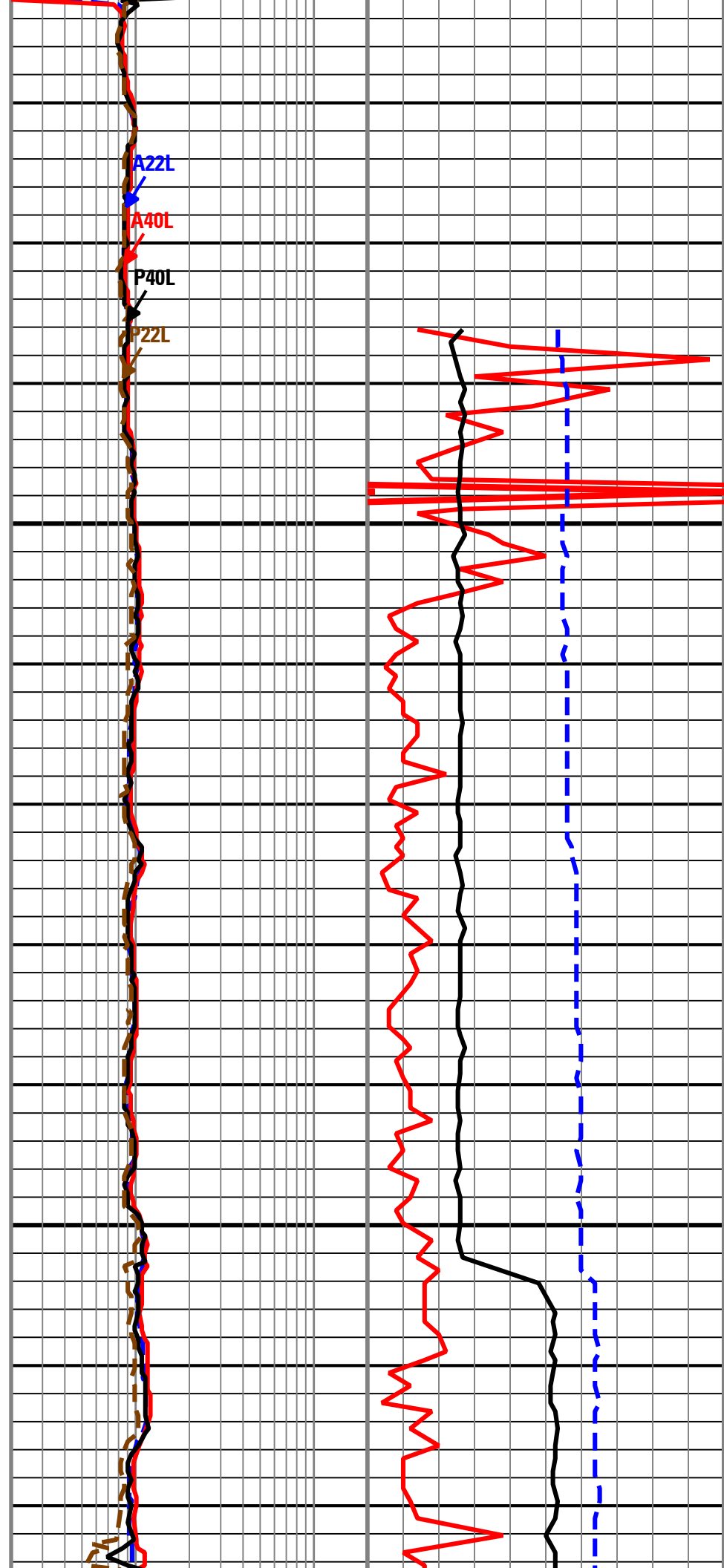
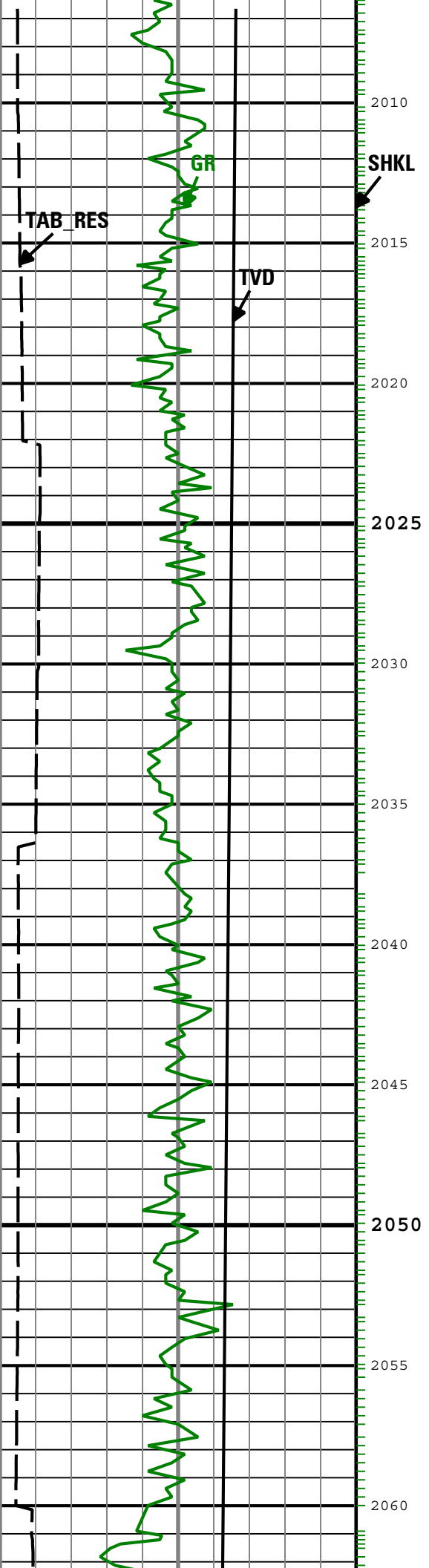
## Log Well Composite C4C4B69A-91B7-4A79-B227-FAFAB02E40A3

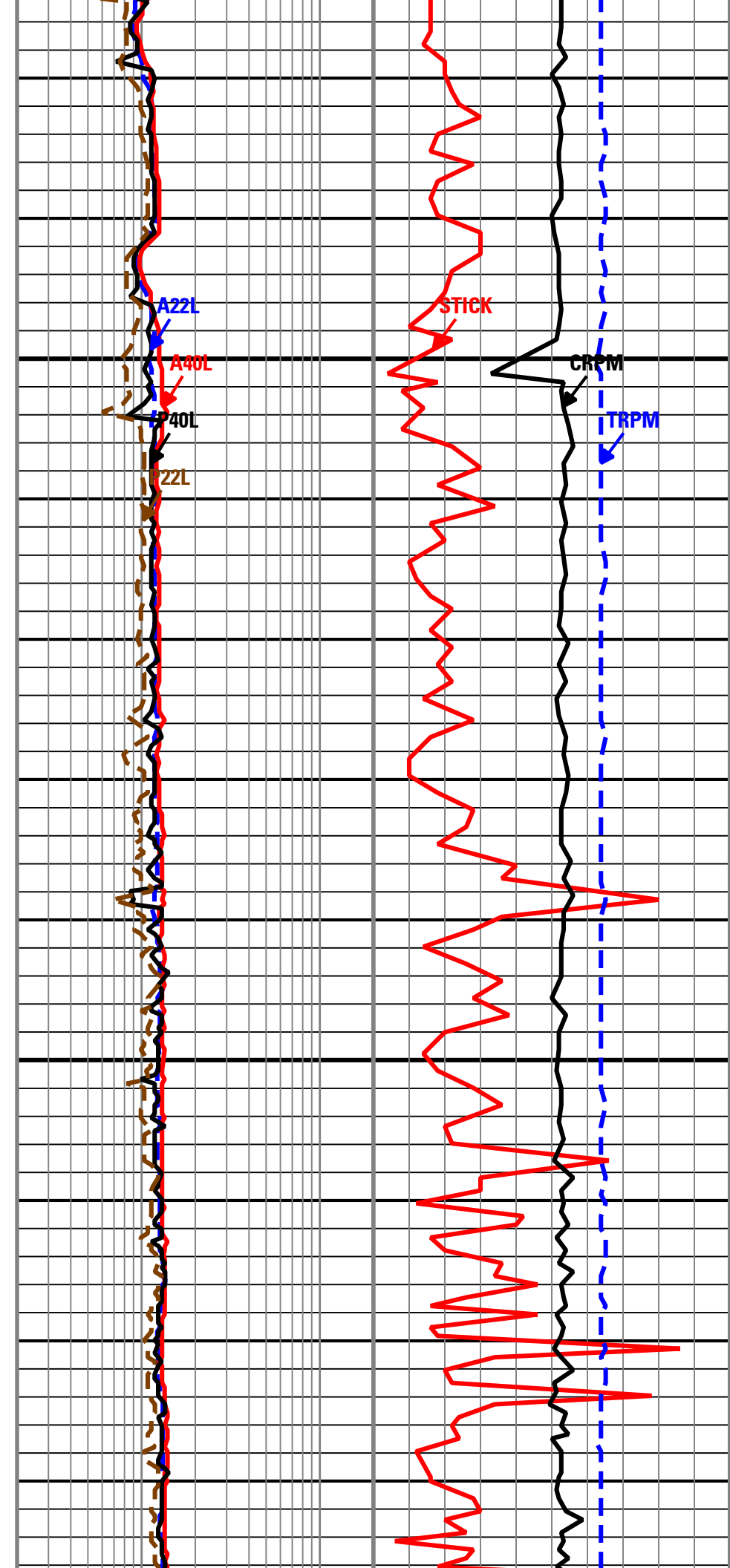
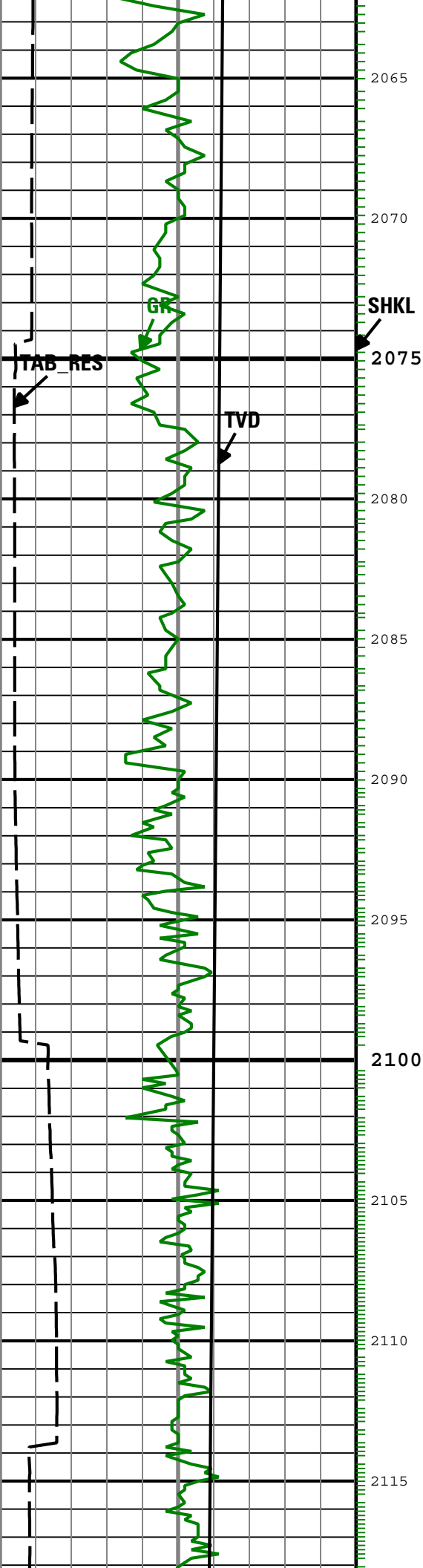
Description: ARC Blended Resistivity RT Format: Log ( ARC Blended Resistivity 2-Log RT ) Index Scale: 1:200 Index Unit: m Index Type: Measured Depth  
 Creation Date: 21-Nov-2010 14:01:34

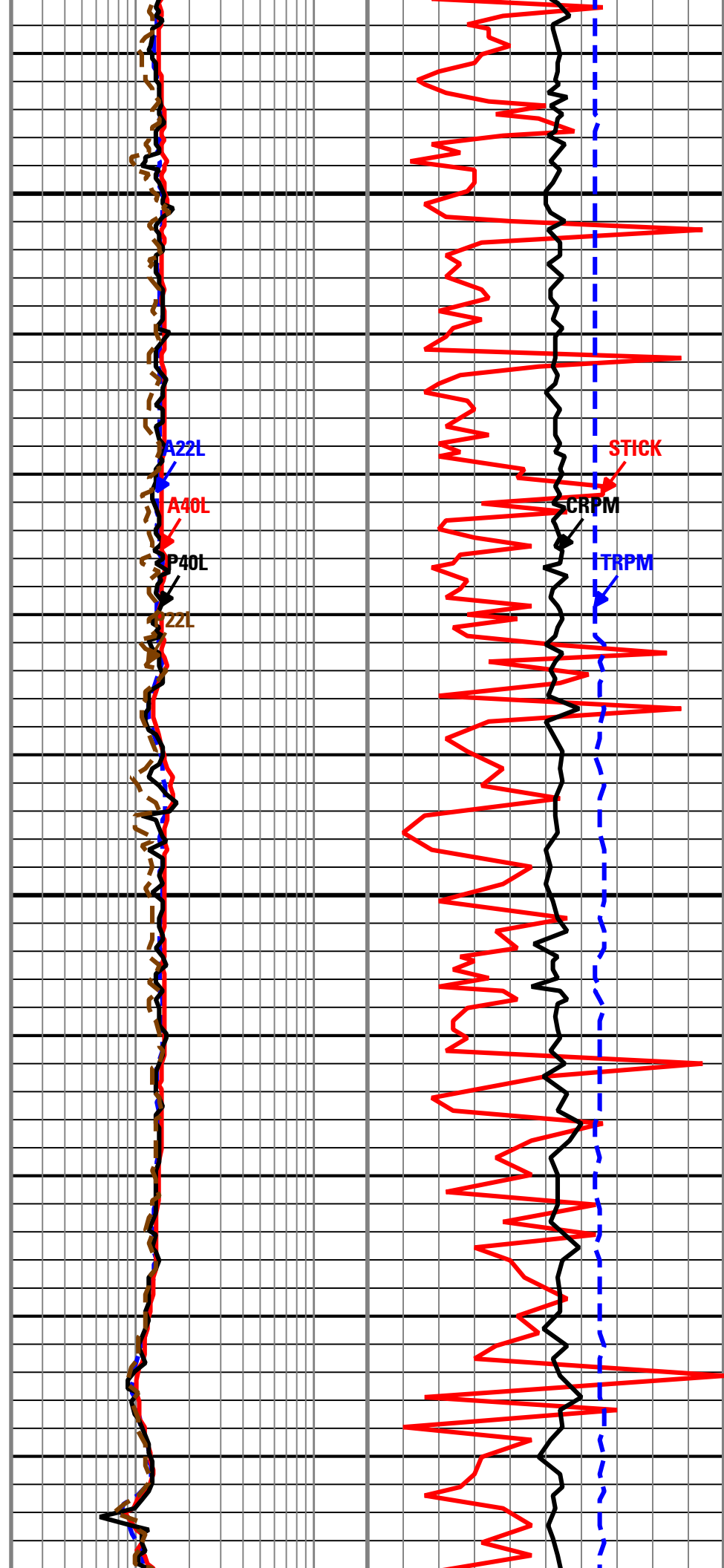
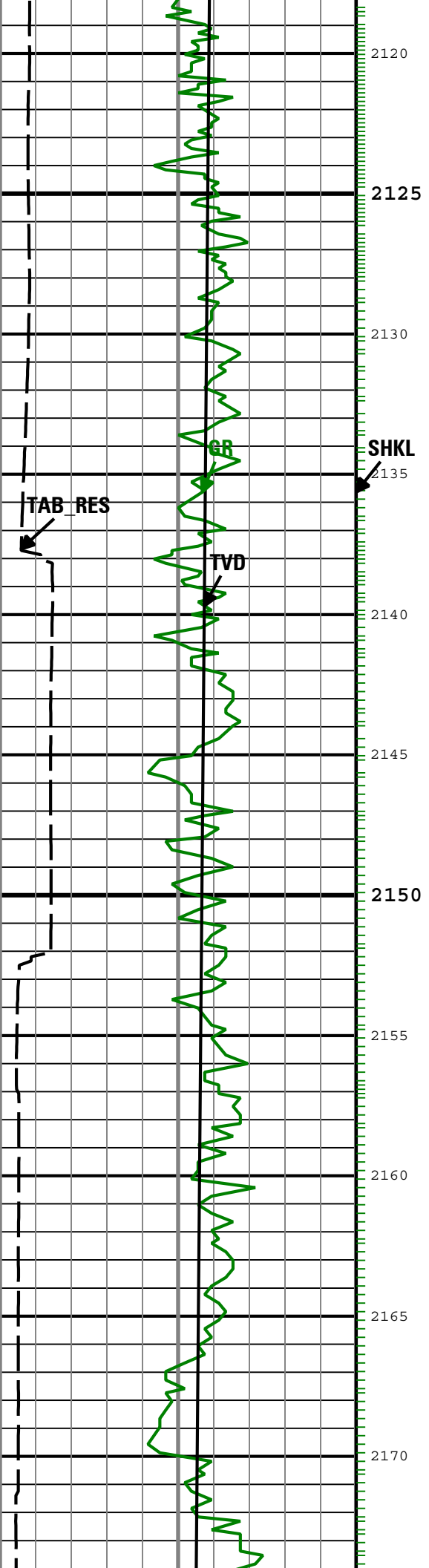
A22L	ARC[1]:ARC[1]:ARDC[1]	6in - RT
A40L	ARC[1]:ARC[1]:ARDC[1]	6in - RT
CRPM	TeleScope[1]:TeleScope[1]	6in - RT
GR	ARC[1]:ARC[1]:ARDC[1]	6in - RT
GR_CAL	ARC[1]:ARC[1]	6in - RT
P22L	ARC[1]:ARC[1]:ARDC[1]	6in - RT
P40L	ARC[1]:ARC[1]:ARDC[1]	6in - RT
SHKL	ARC[1]:ARC[1]	6in - RT
STICK	TeleScope[1]:TeleScope[1]	6in - RT
TAB_RES	ARC[1]:ARC[1]:ARDC[1]	6in
TRPM	TeleScope[1]:TeleScope[1]	6in - RT
TVD	DnMWorkflow	6in - RT

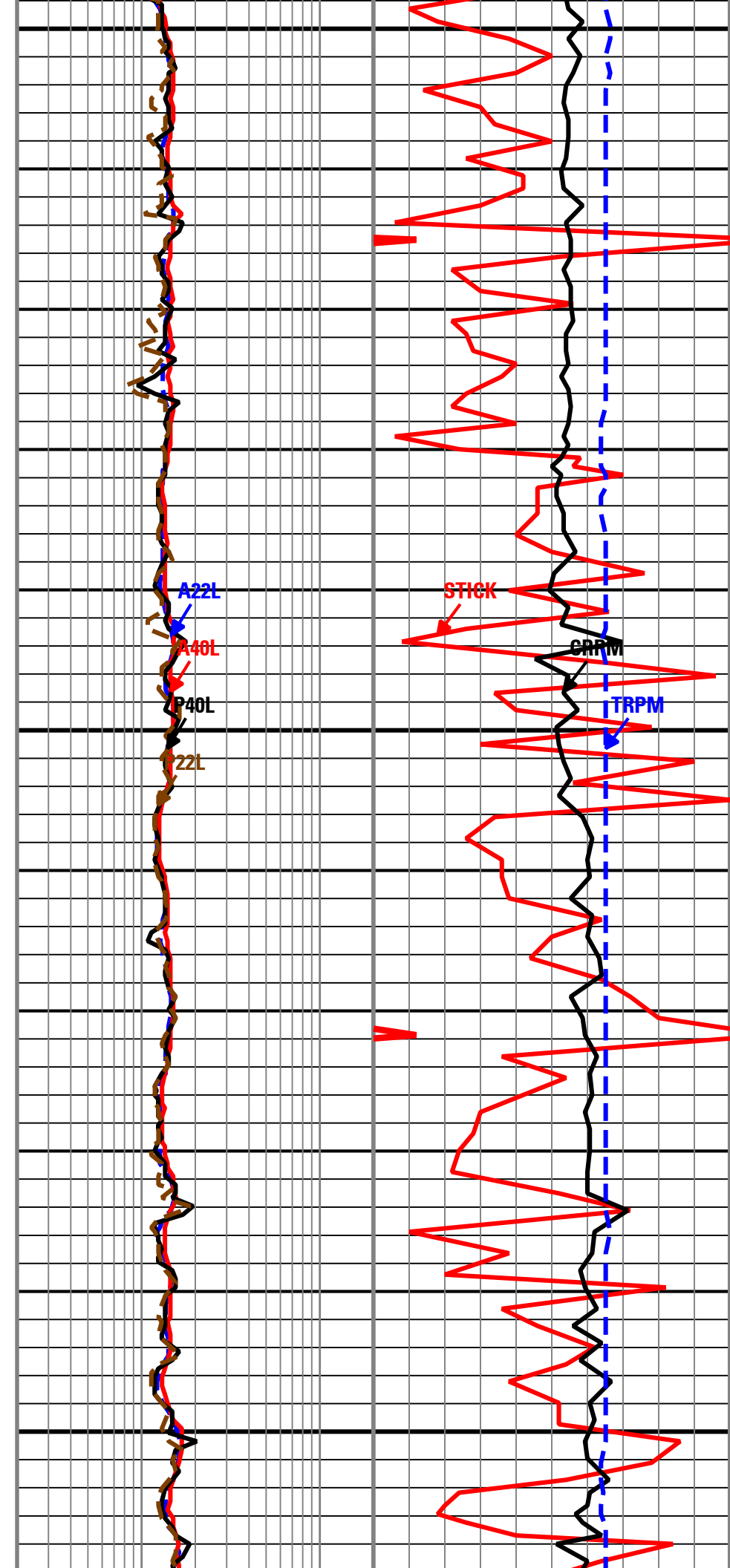
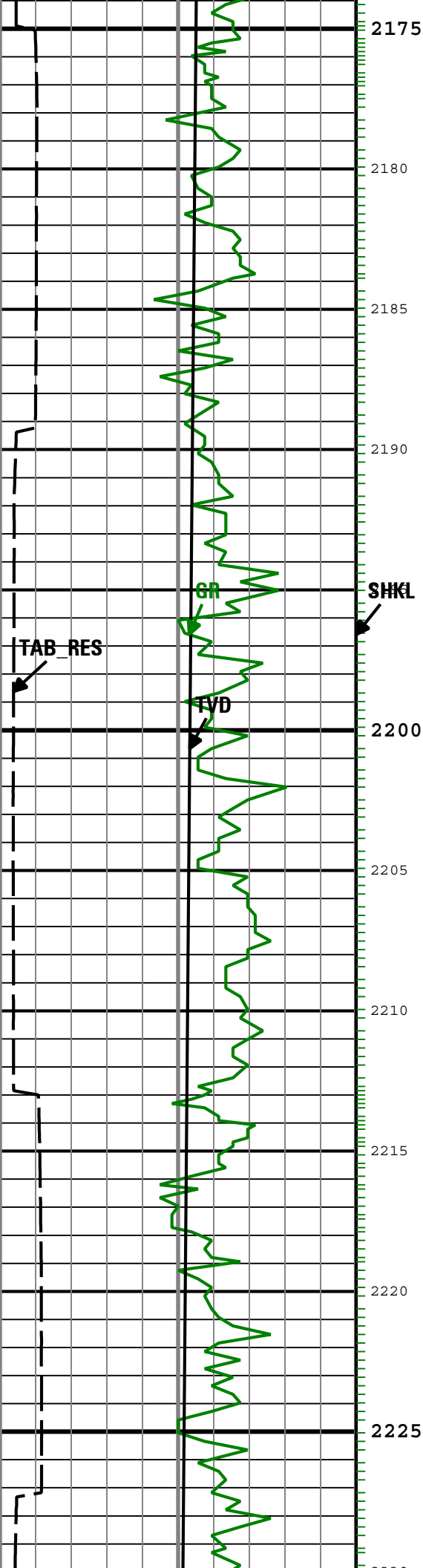
### GR\_CAL - Calibrated Gamma Ray ARC[1] RT

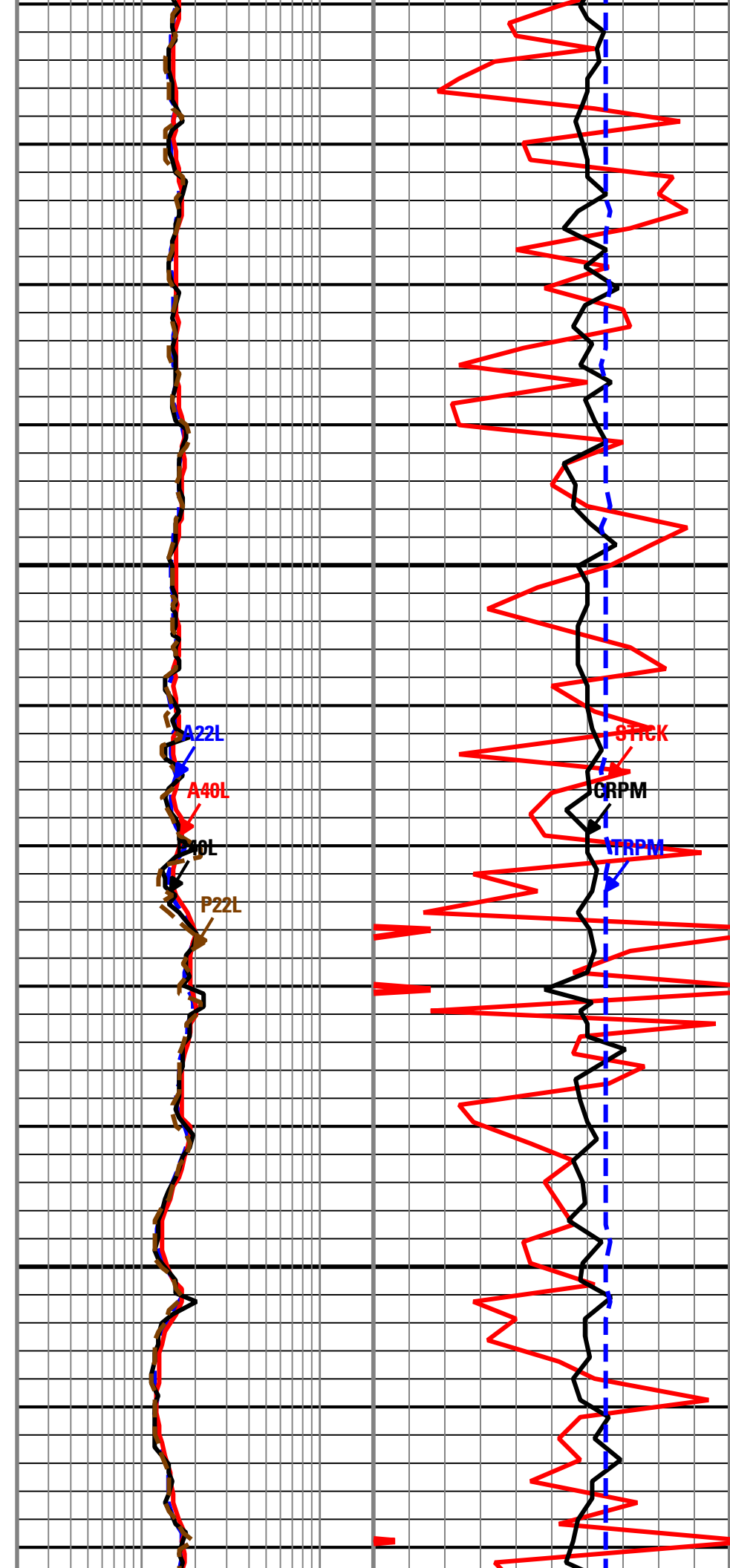
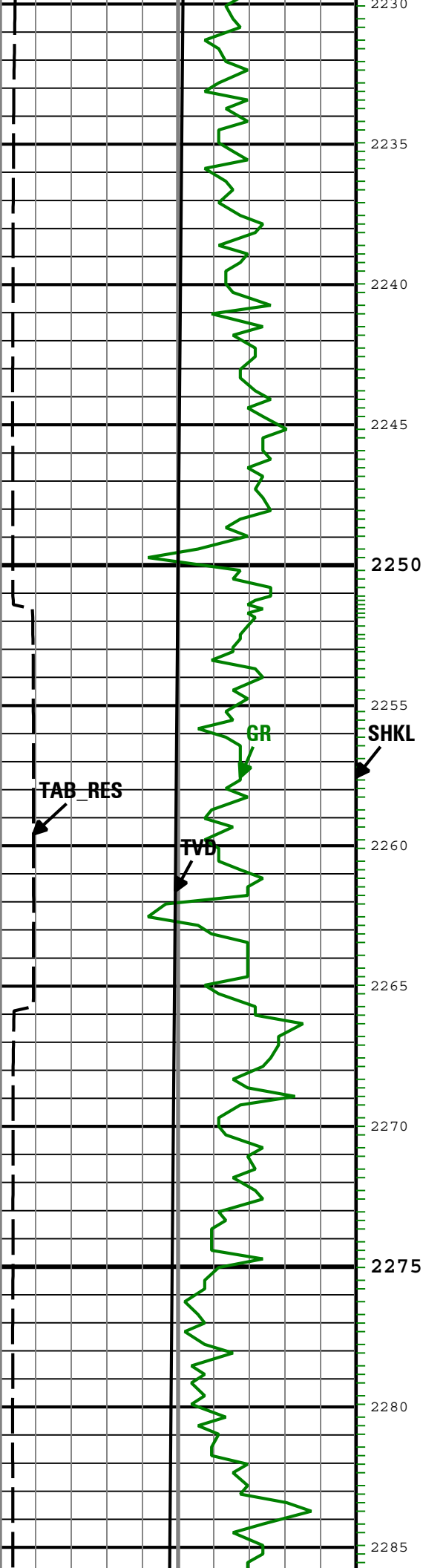


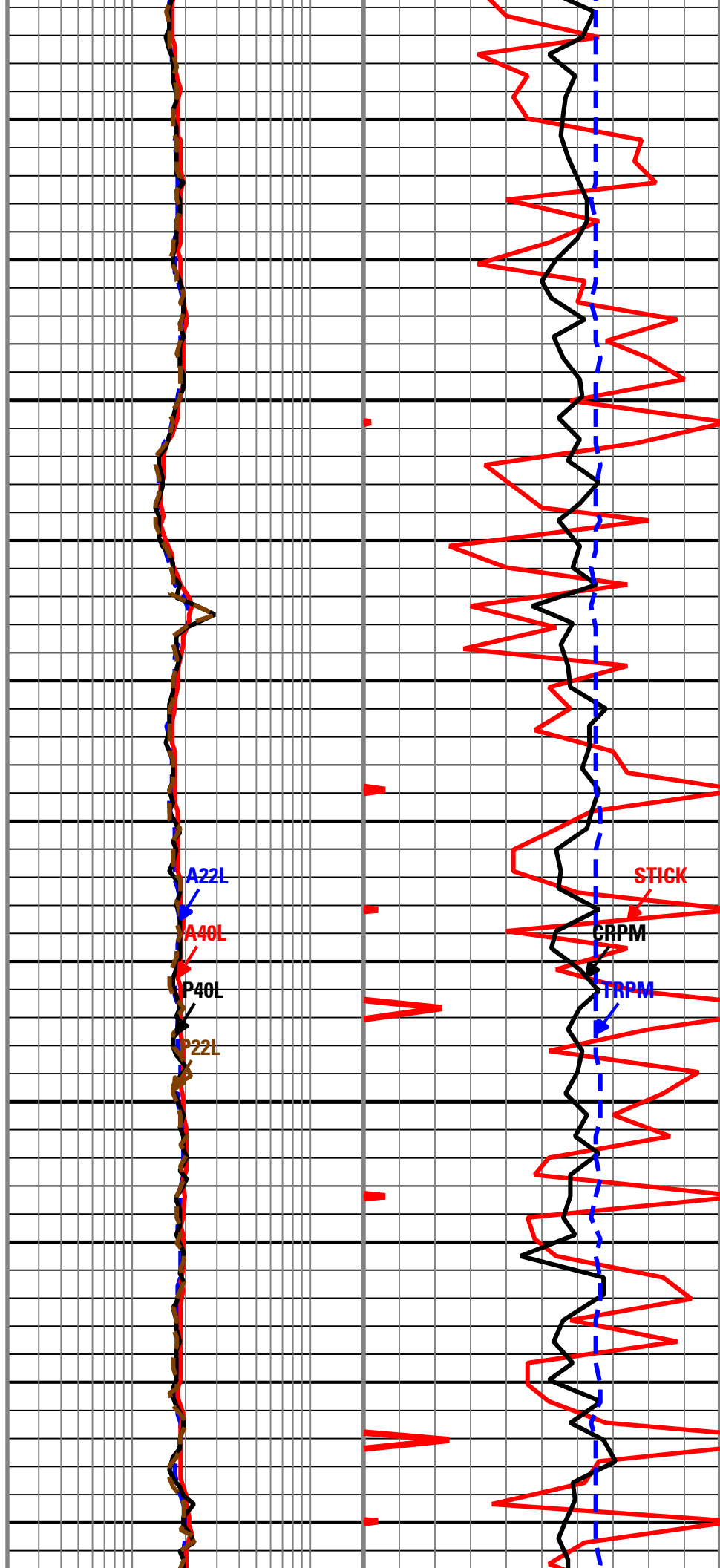
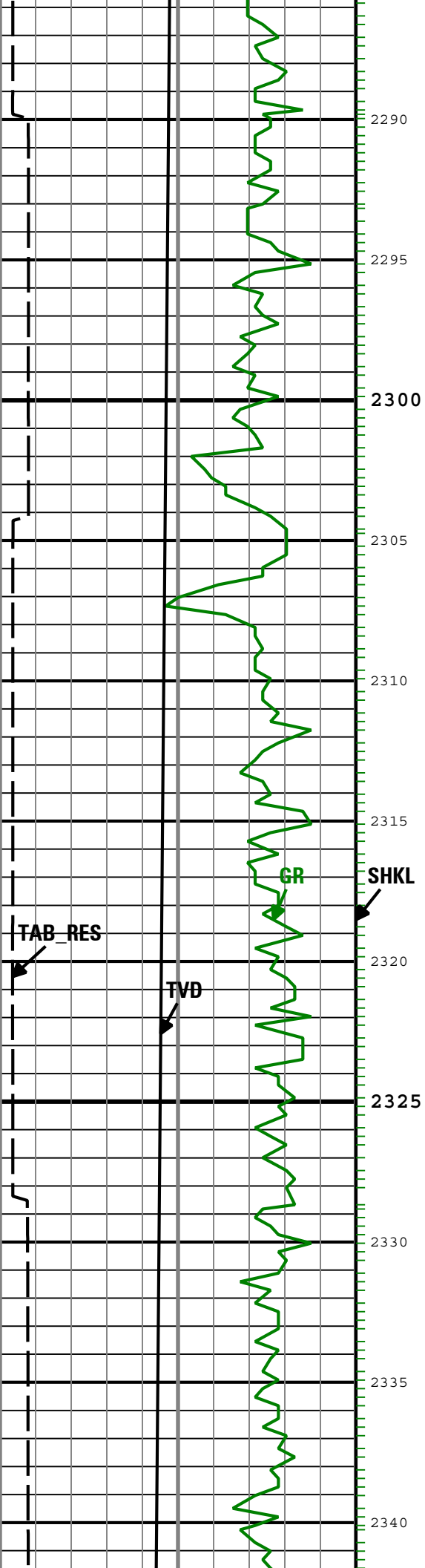


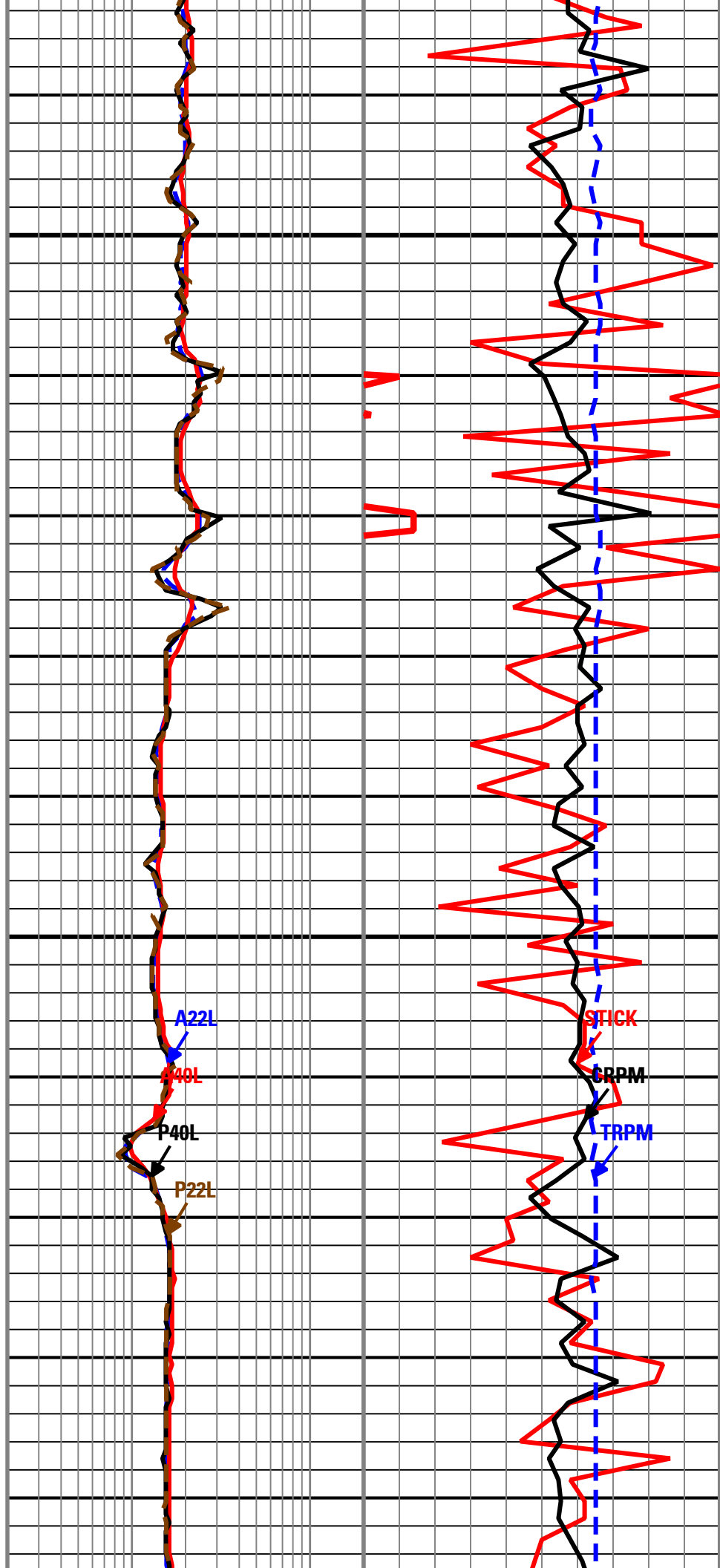
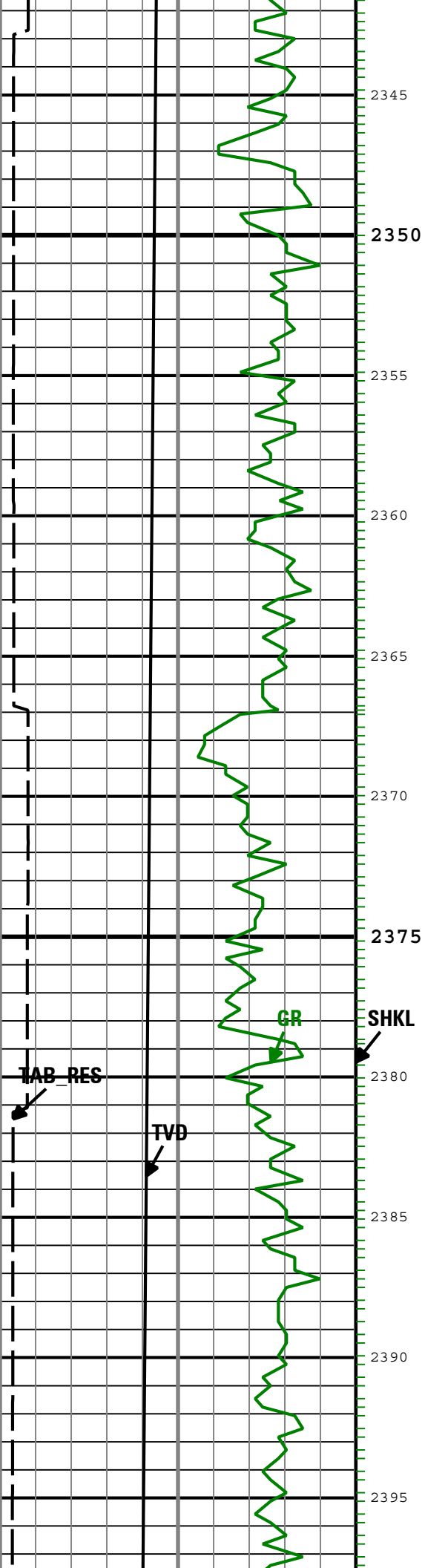




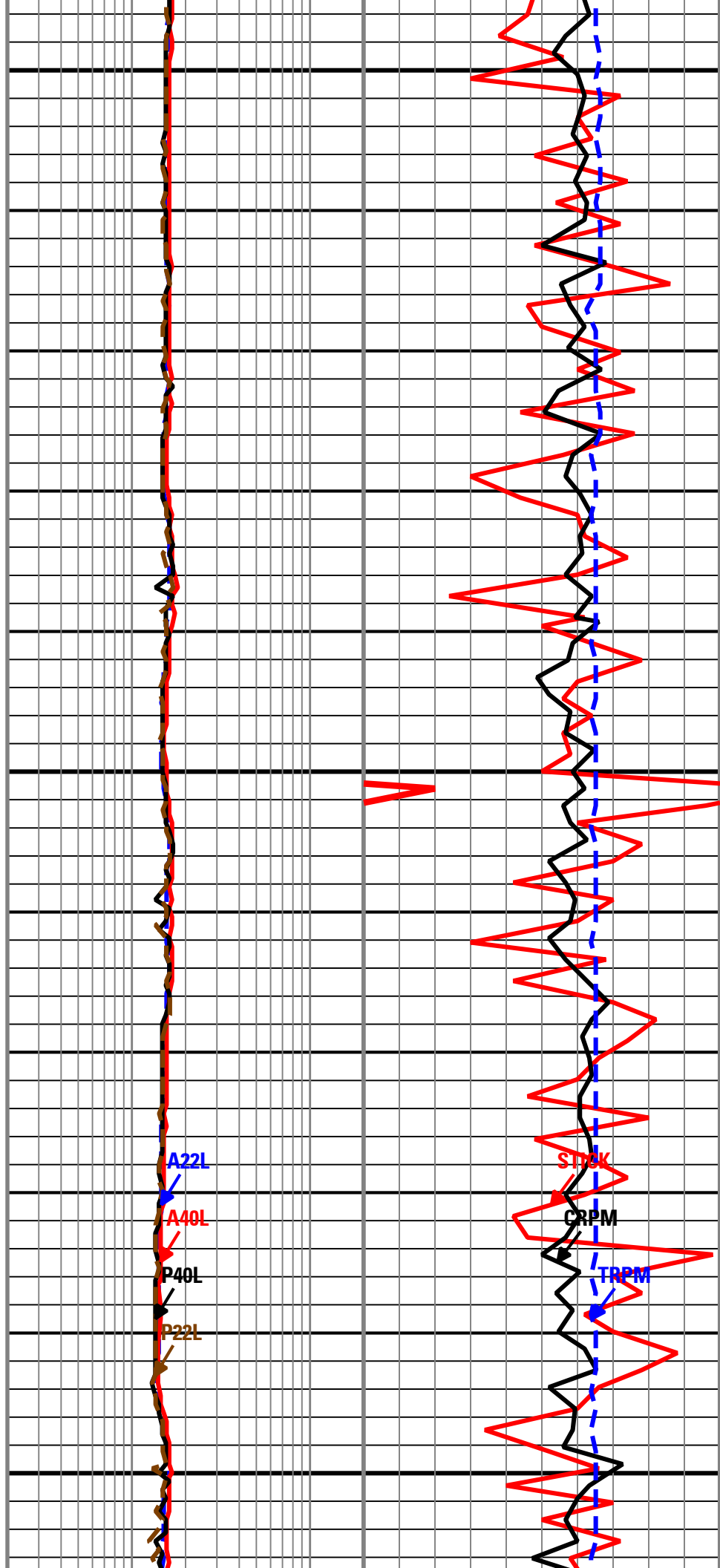
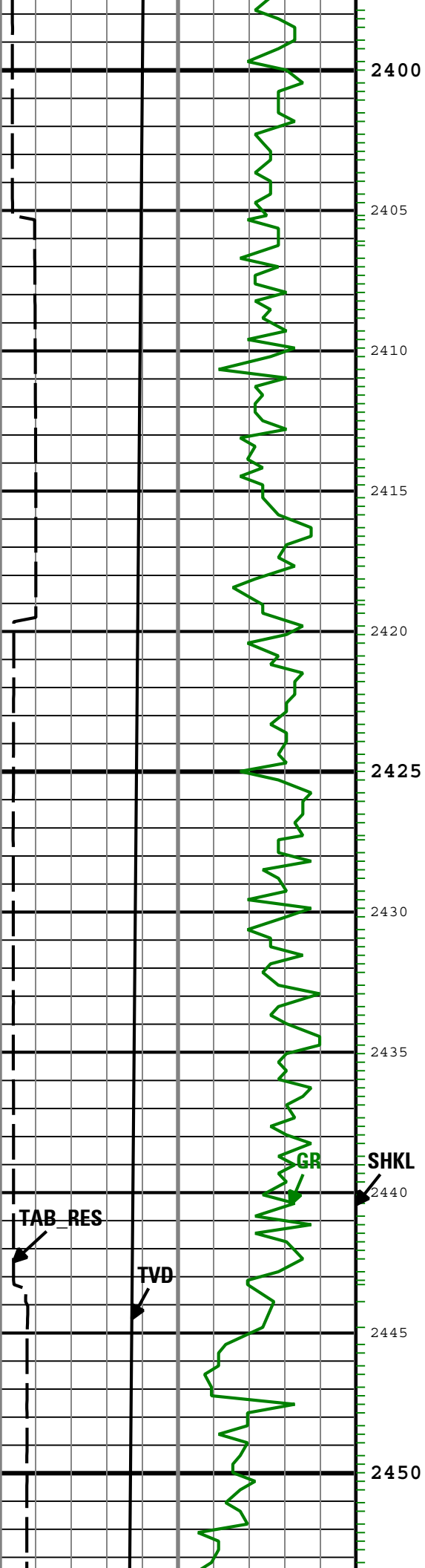


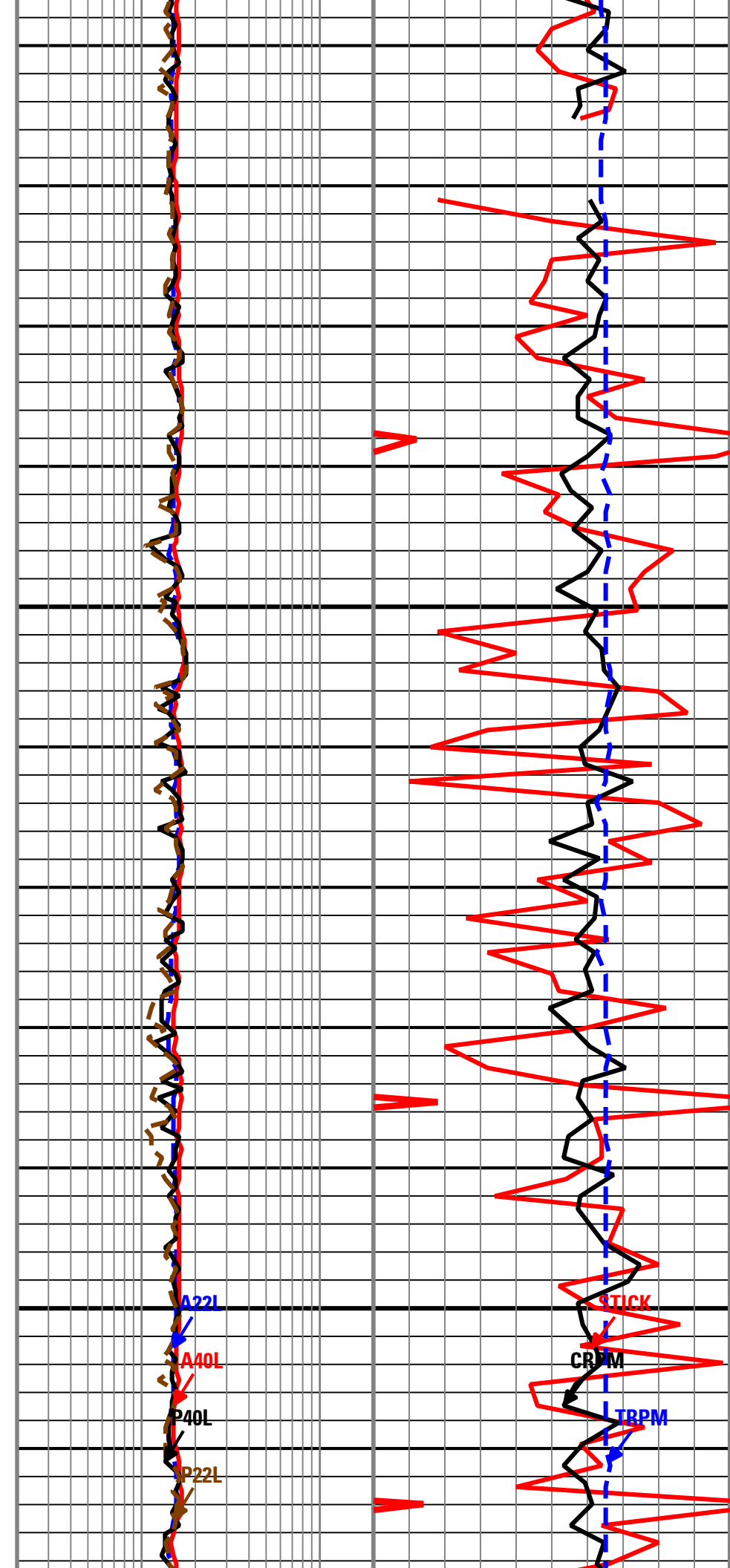
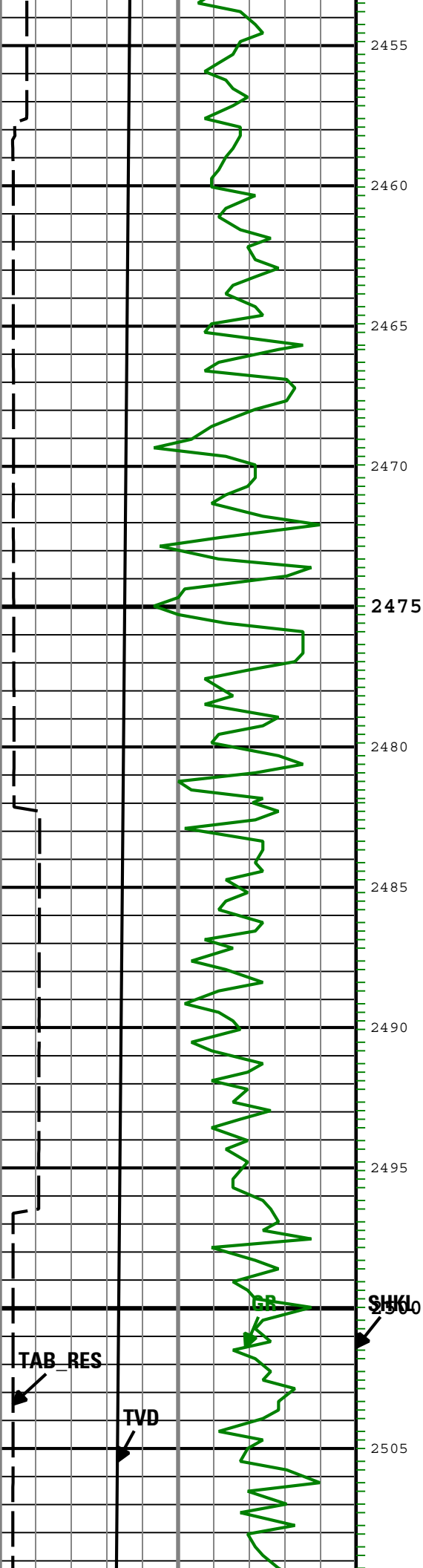


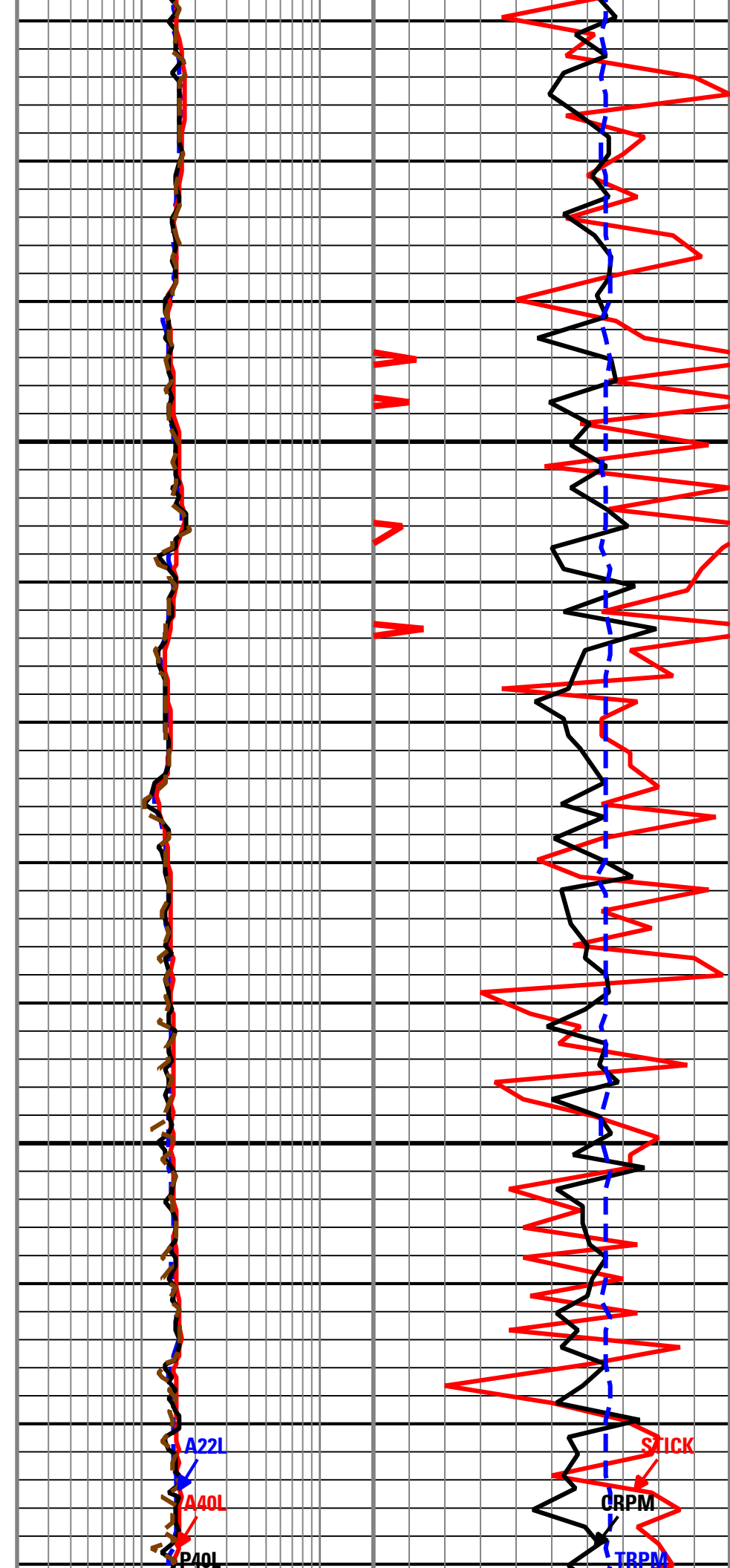
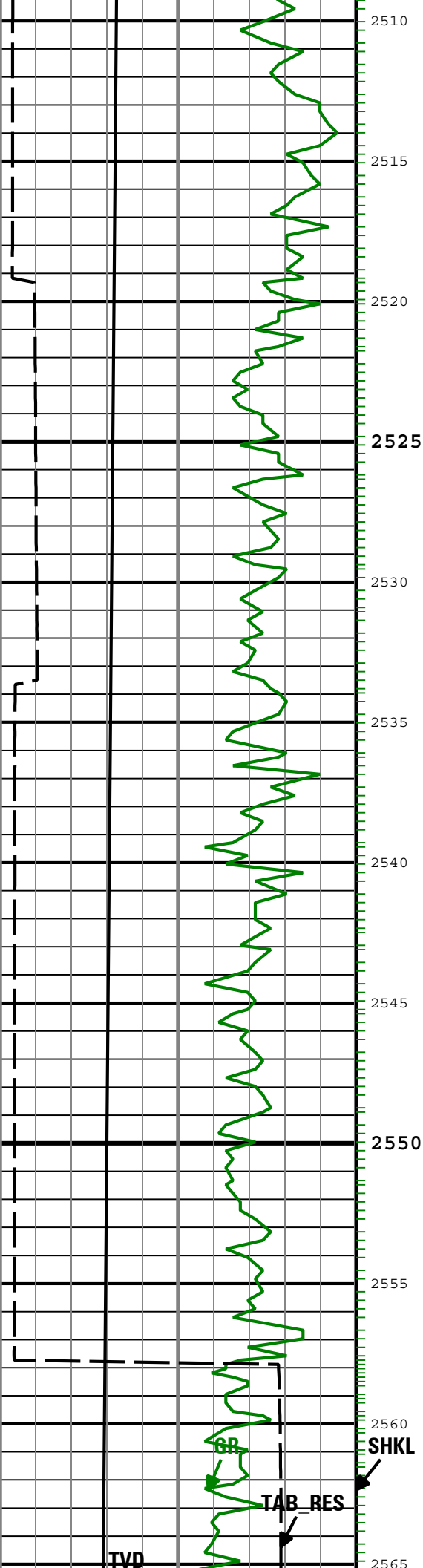


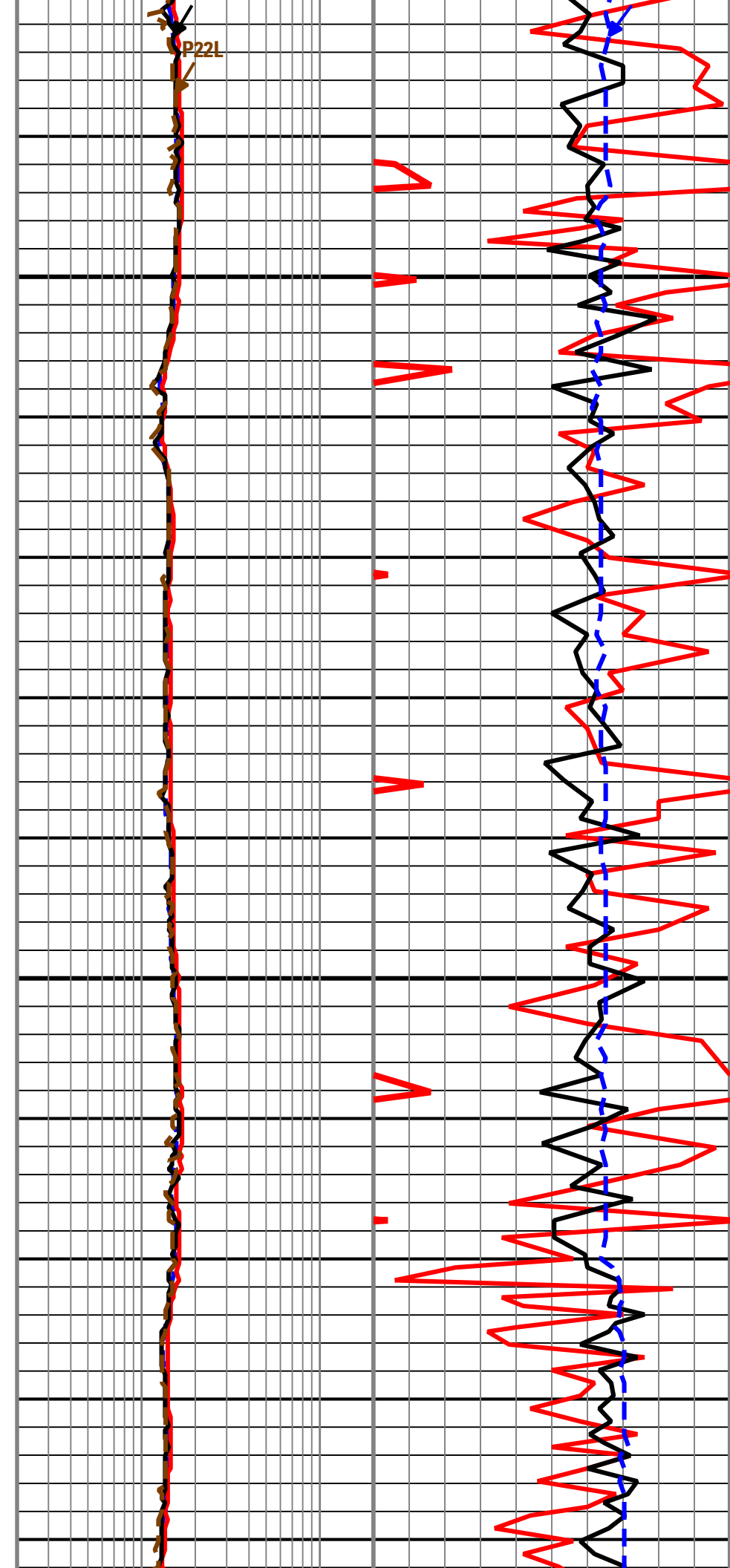
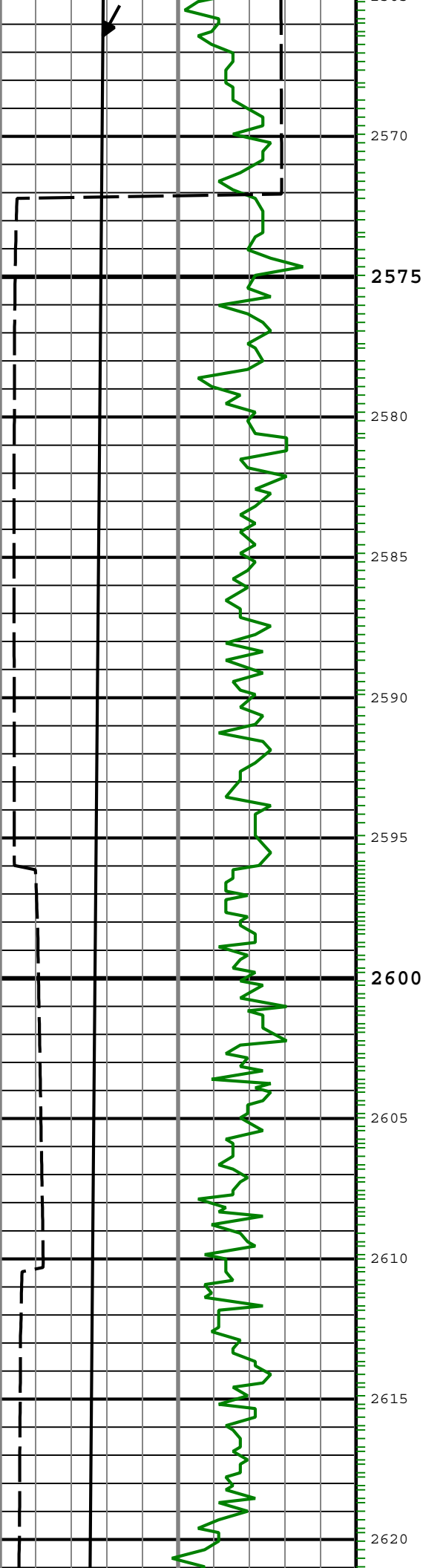


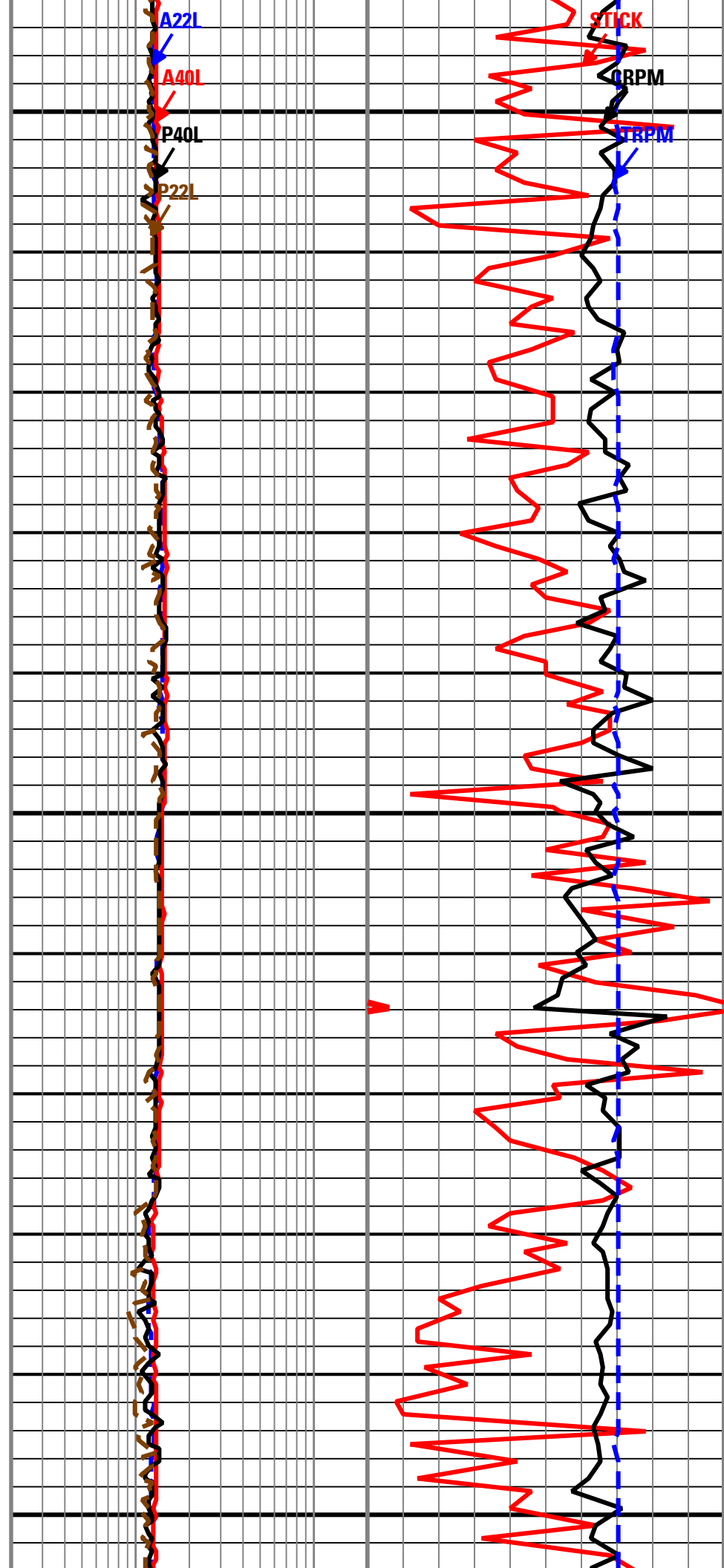
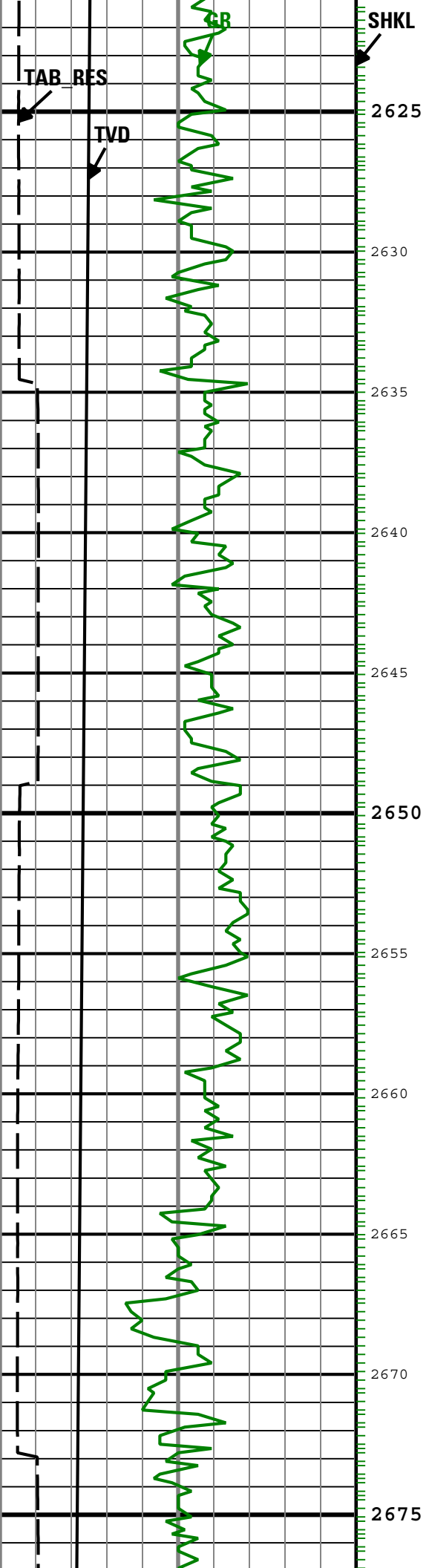


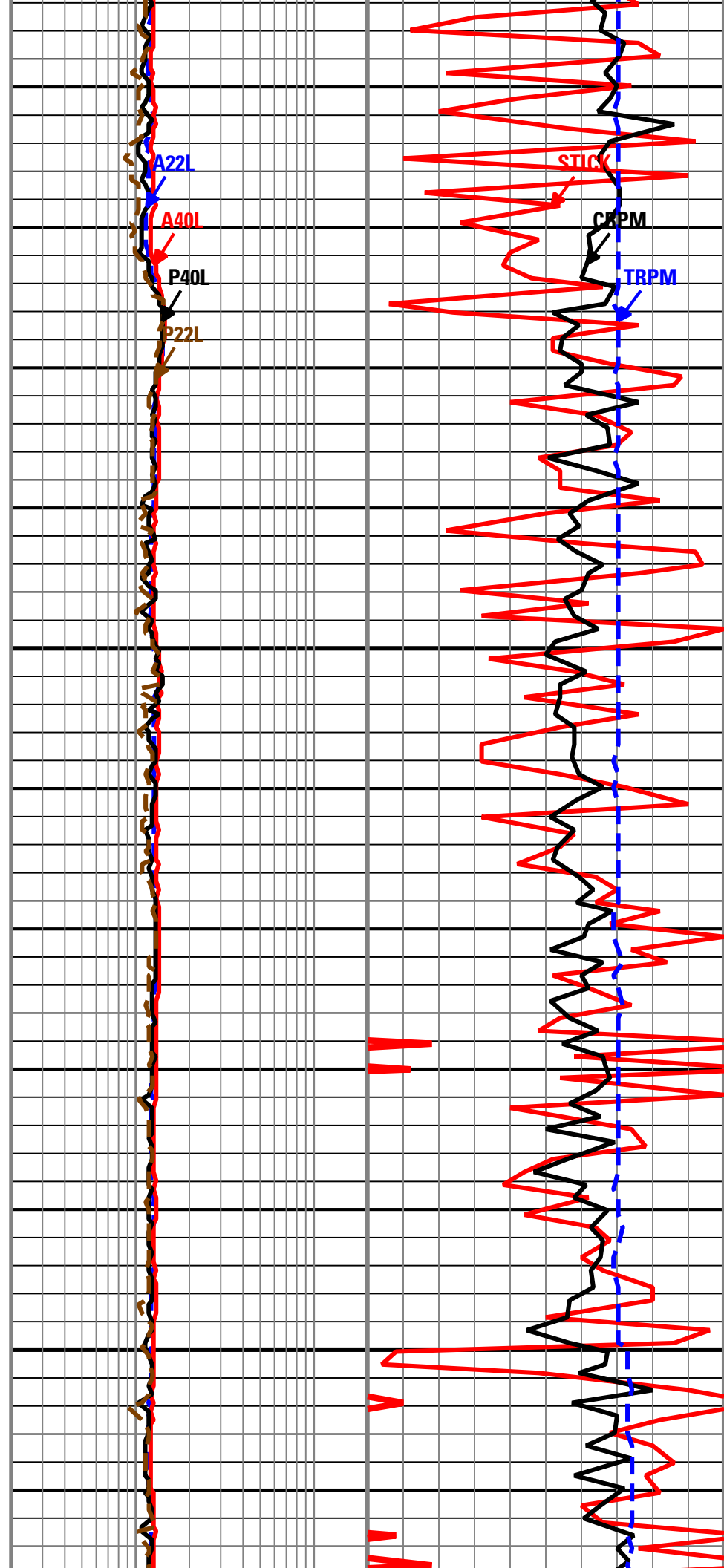
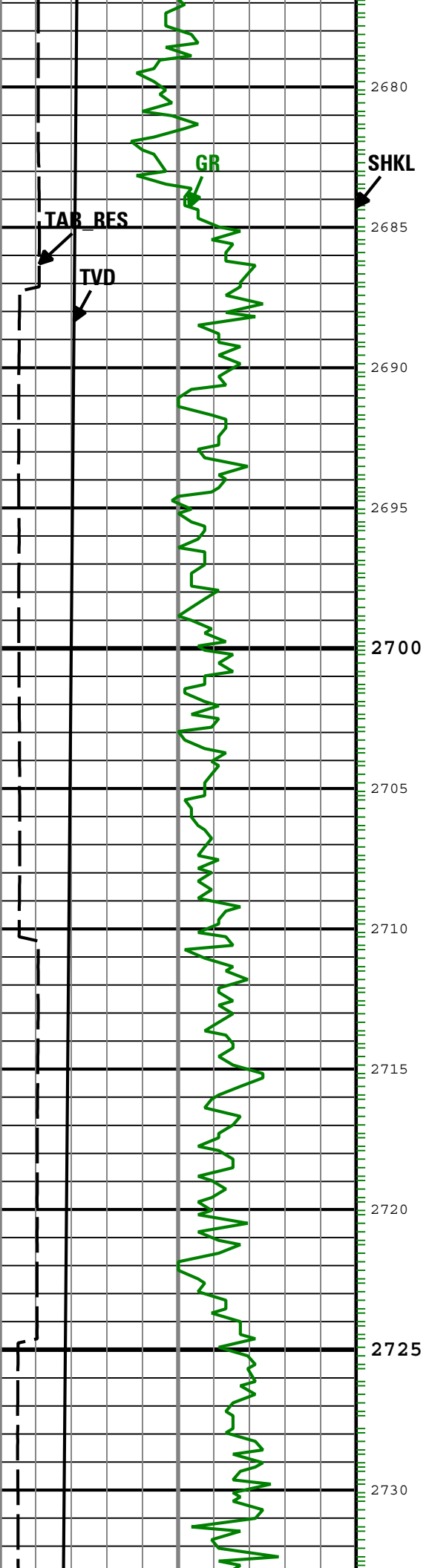


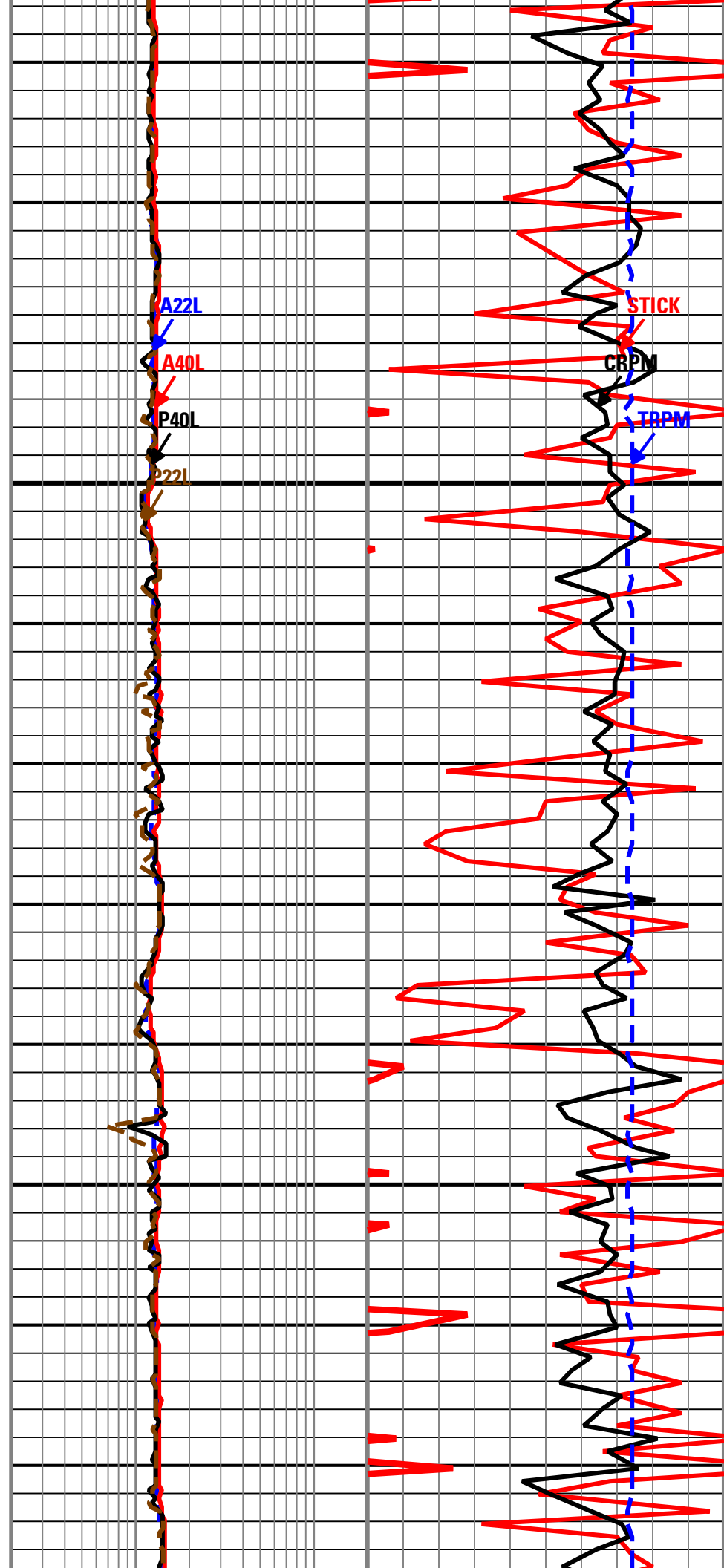
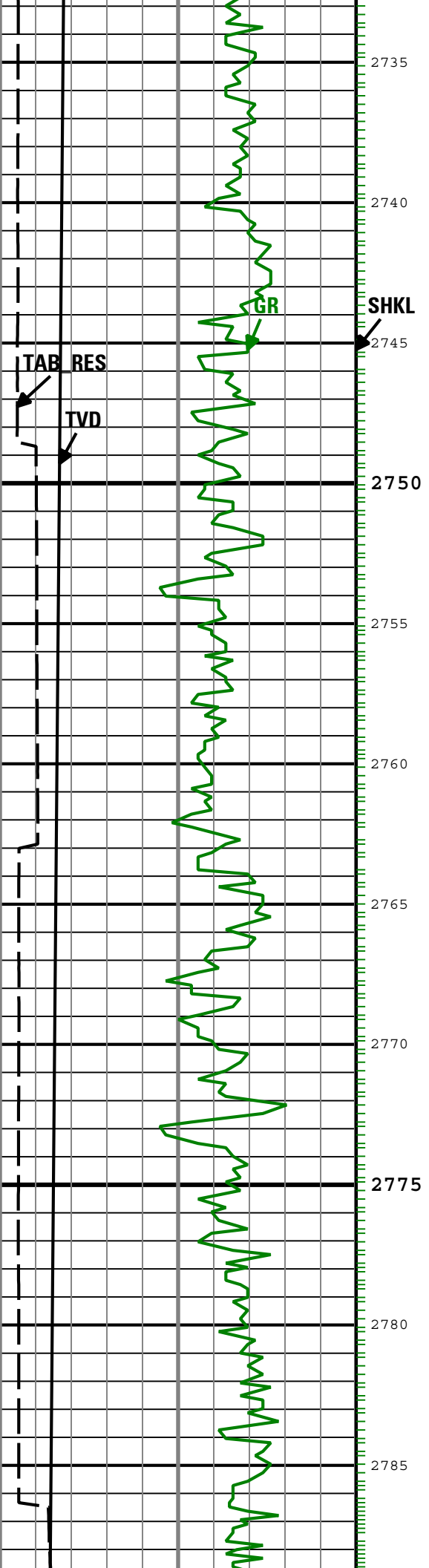


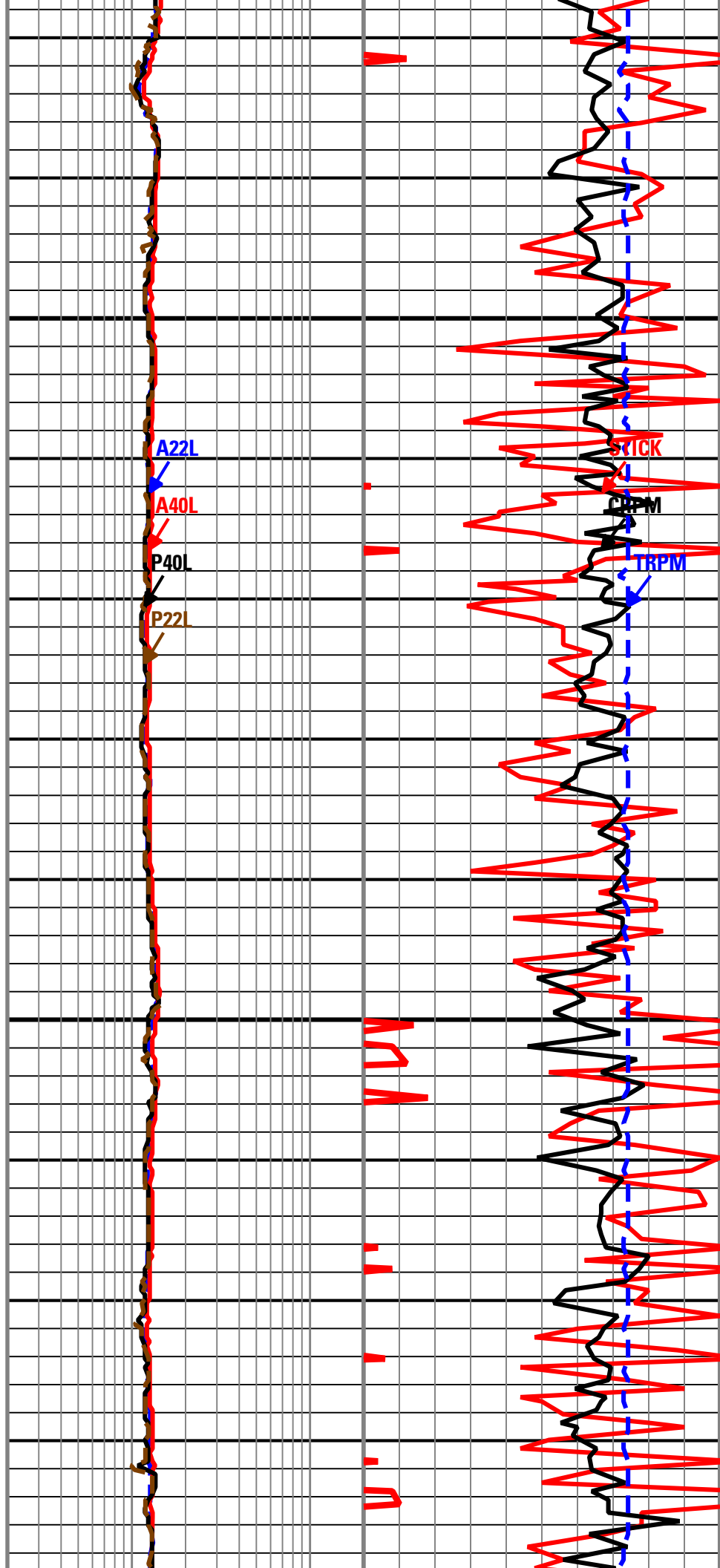
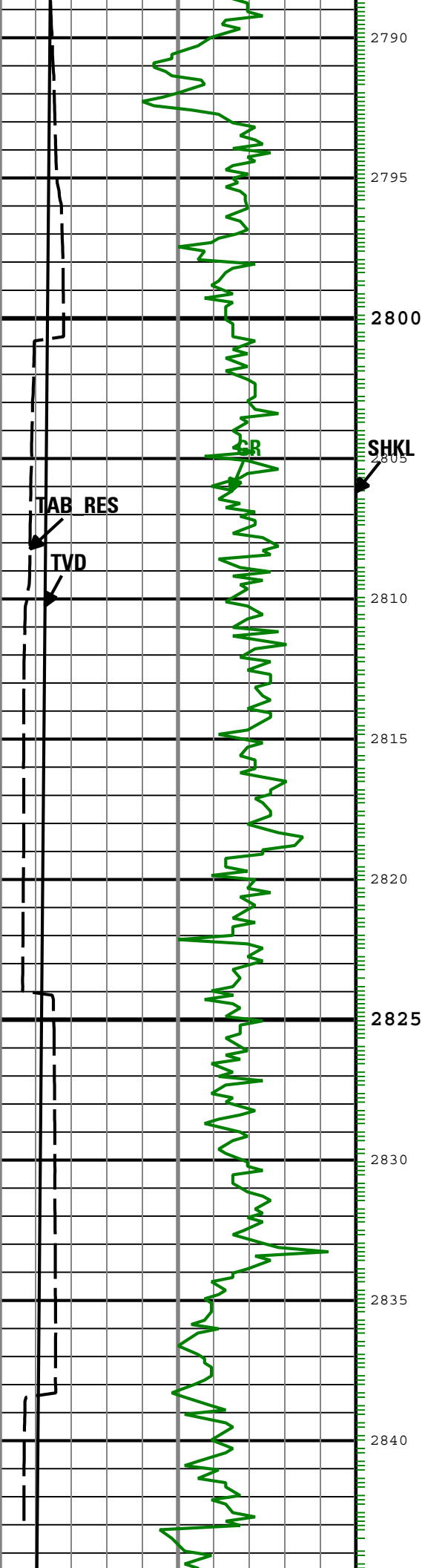




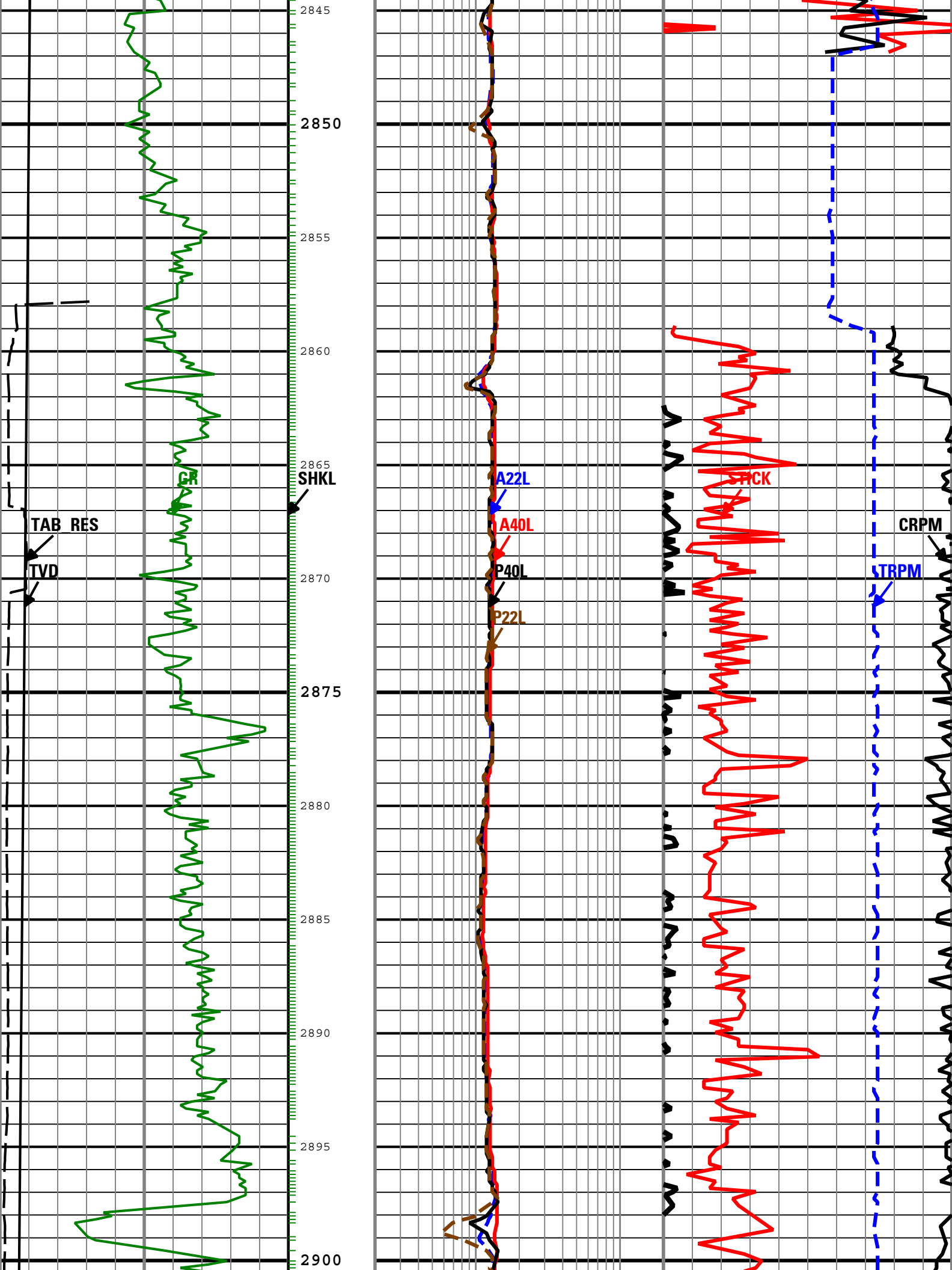


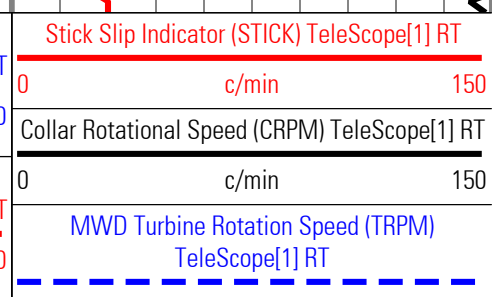
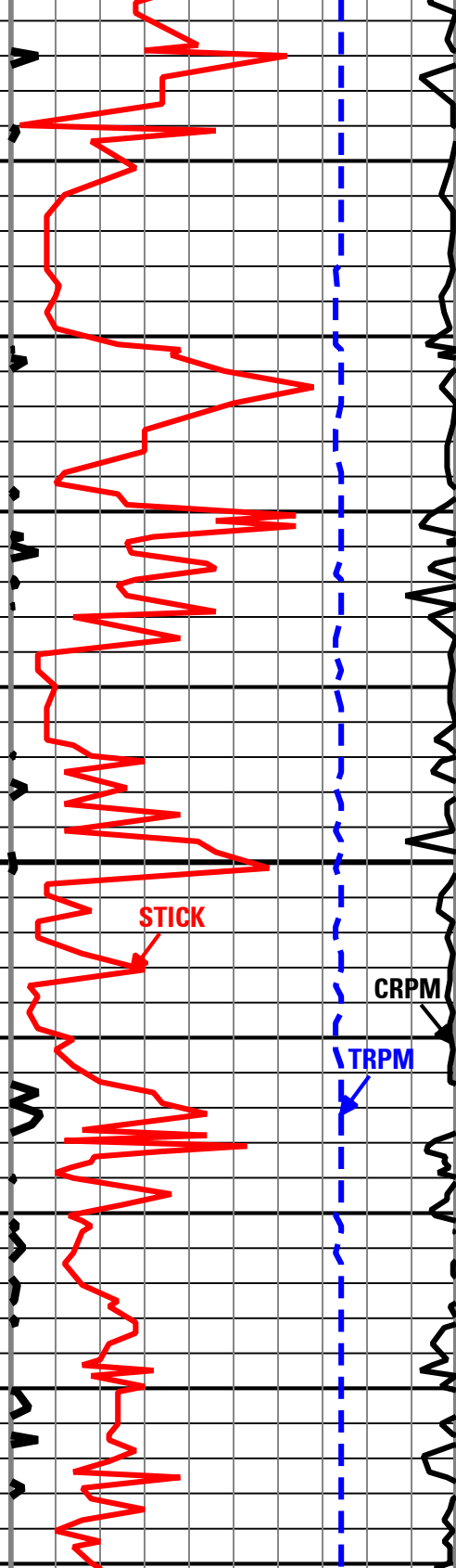
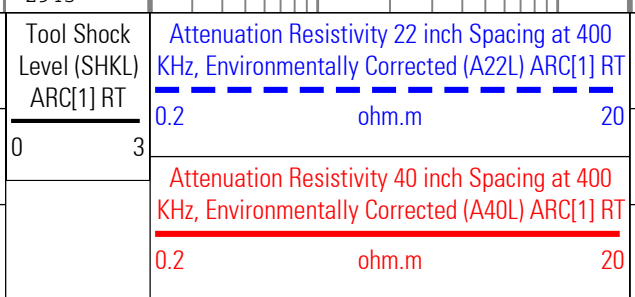
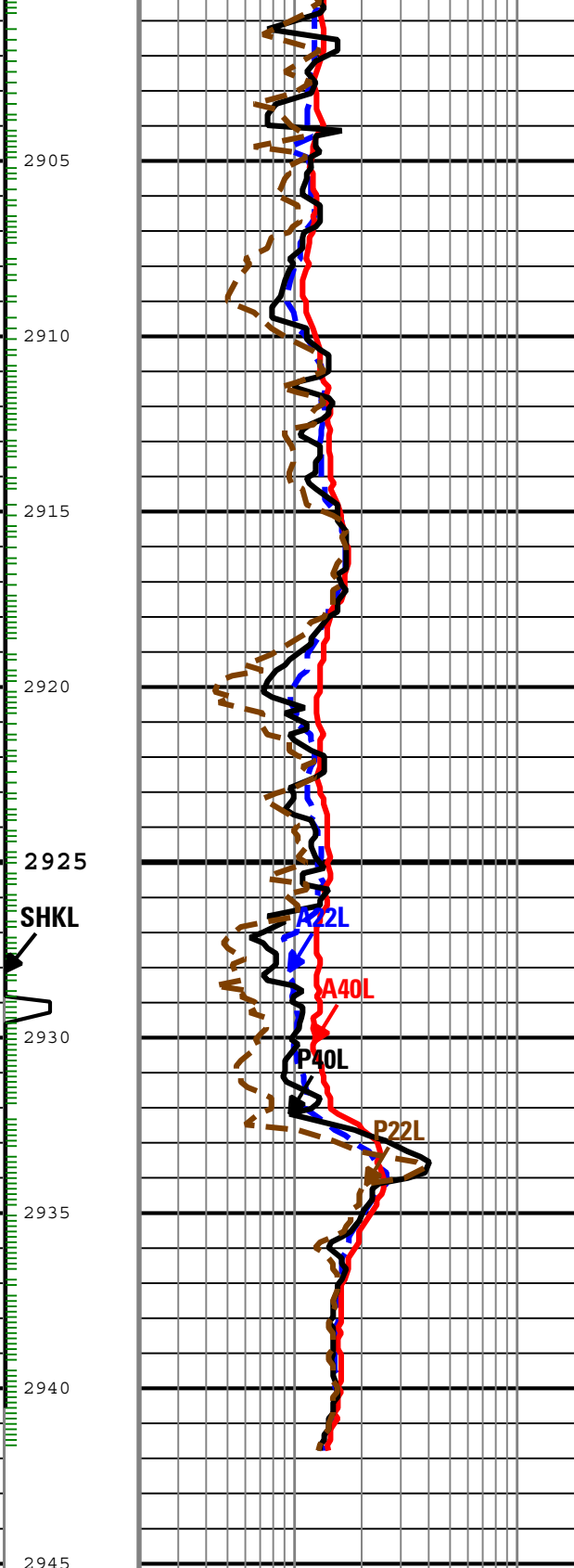
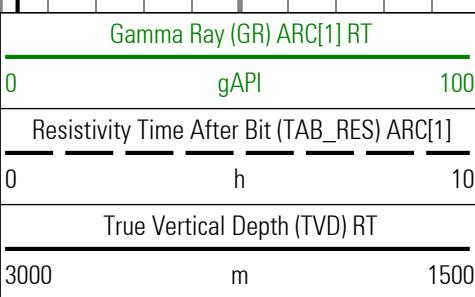
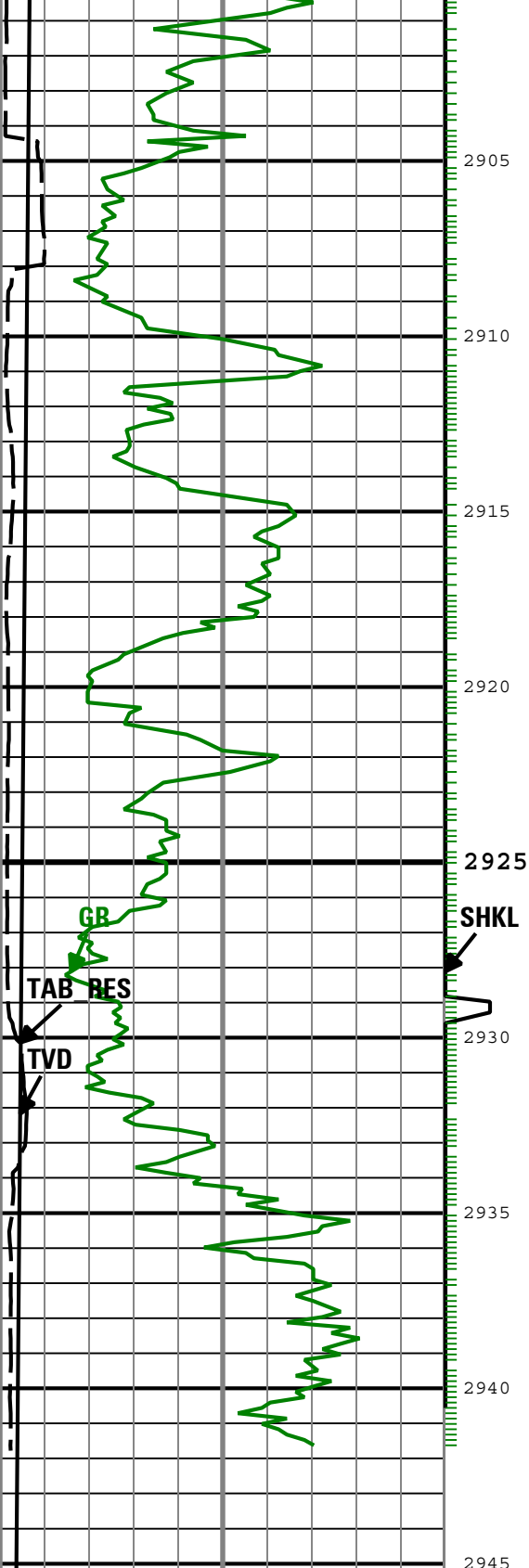












Phase Shift Resistivity 22 inch Spacing at 400 KHz, Environmentally Corrected. (P22L) ARC[1] RT

0.2 ohm.m 20

└ GR\_CAL - Calibrated Gamma Ray ARC[1] RT

Description: ARC Blended Resistivity RT Format: Log ( ARC Blended Resistivity 2-Log RT ) Index Scale: 1:200 Index Unit: m Index Type: Measured Depth  
 Creation Date: 21-Nov-2010 14:01:34

## Channel Processing Parameters

### 1: Parameters

Parameter	Description	ToolPath	Value	Unit
BHK	Drilling Fluid Potassium Concentration	Borehole	0	%
BHT	Bottom Hole Temperature	Borehole	10	degC
BS	Bit Size	COMPLETION	Depth Zoned	in
DEPTH_SEL	Depth Selection Parameter	DNMSESSION	Driller's Depth	
DFD	Drilling Fluid Density	Borehole	1.02	g/cm3
DFT	Drilling Fluid Type	Borehole	Water	
GRSE_RT	Generalized Mud Resistivity Selection for Realtime Mode	Borehole	REMS	
GTSE_RT	Generalized Temperature Selection for Realtime Mode	Borehole	GTEM_GRDSURF	
MST	Mud Sample Temperature	Borehole	20	degC
RMS	Resistivity of Mud Sample	Borehole	0.2	ohm.m
SHT	Surface Hole Temperature	Borehole	5	degC
TD	Total Measured Depth	Borehole	2858	m

### 1 : Depth Zoned Parameters

Parameter	Value	Start ( m )	Stop ( m )
BS	0	2004	2006.9
BS	12.25	2006.9	2857.75

All depth are actual.

### 2: Parameters

Parameter	Description	ToolPath	Value	Unit
BHK	Drilling Fluid Potassium Concentration	Borehole	0	%
BHT	Bottom Hole Temperature	Borehole	10	degC
BS	Bit Size	COMPLETION	Depth Zoned	in
DEPTH_SEL	Depth Selection Parameter	DNMSESSION	Driller's Depth	
DFD	Drilling Fluid Density	Borehole	1.02	g/cm3
DFT	Drilling Fluid Type	Borehole	Water	
GRSE_RT	Generalized Mud Resistivity Selection for Realtime Mode	Borehole	REMS	
GTSE_RT	Generalized Temperature Selection for Realtime Mode	Borehole	GTEM_GRDSURF	
MST	Mud Sample Temperature	Borehole	20	degC
RMS	Resistivity of Mud Sample	Borehole	0.2	ohm.m
SHT	Surface Hole Temperature	Borehole	5	degC
TD	Total Measured Depth	Borehole	2858	m

### 2 : Depth Zoned Parameters

Parameter	Value	Start ( m )	Stop ( m )
BS	12.25	2805.89	2857.75
BS	10.625	2857.75	

All depth are actual.

## Tool Control Parameters

## 1: Parameters

Parameter	Description	ToolPath	Value	Unit
OFFBTM_TH	Threshold for deciding whether the bit is off bottom	DnMWorkflow	0.3	m

## 2: Parameters

Parameter	Description	ToolPath	Value	Unit
OFFBTM_TH	Threshold for deciding whether the bit is off bottom	DnMWorkflow	0.3	m