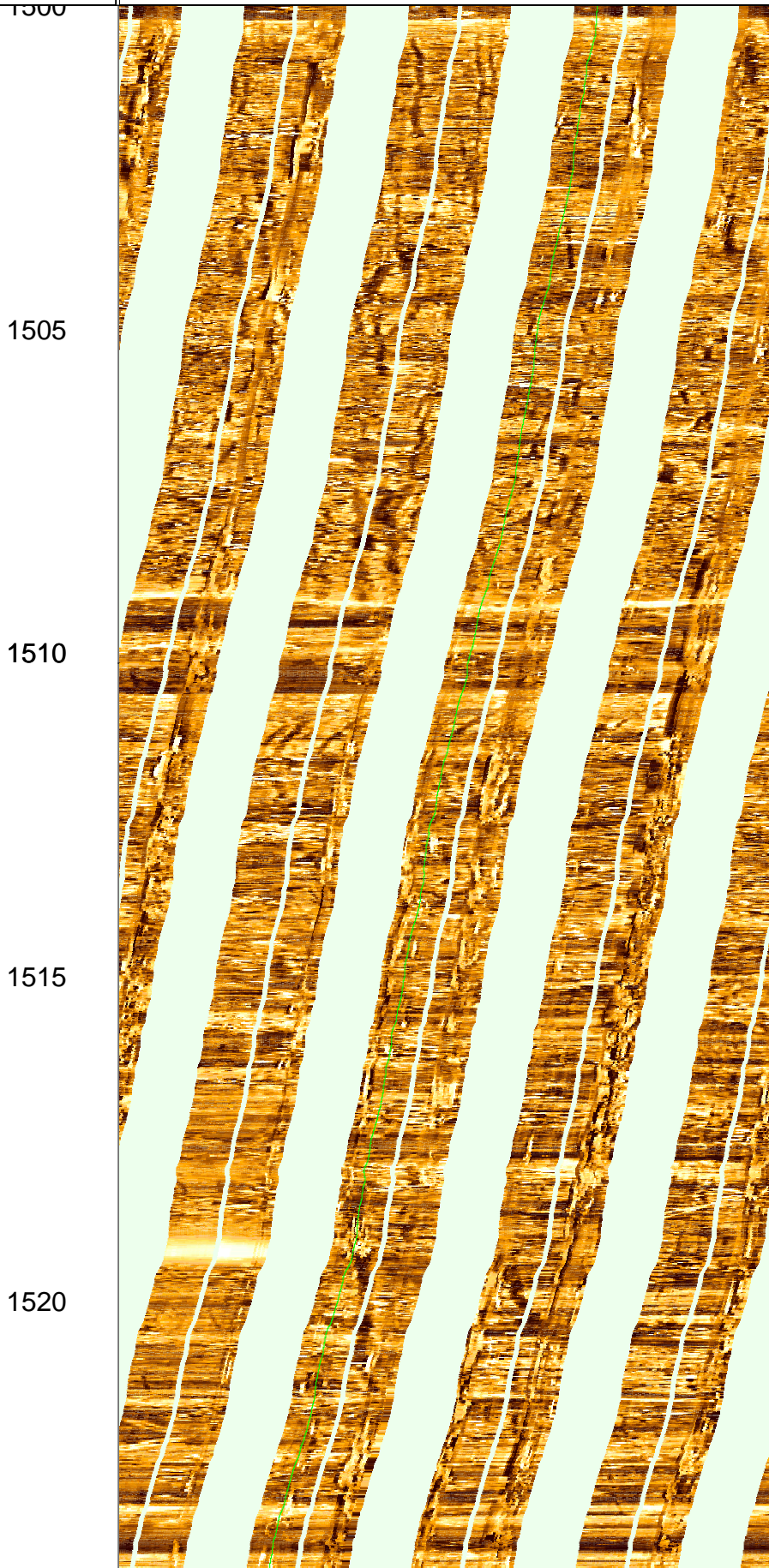


0 120 240 360

MD
1 : 100
m

Resistive FMI Image Conductive



1525

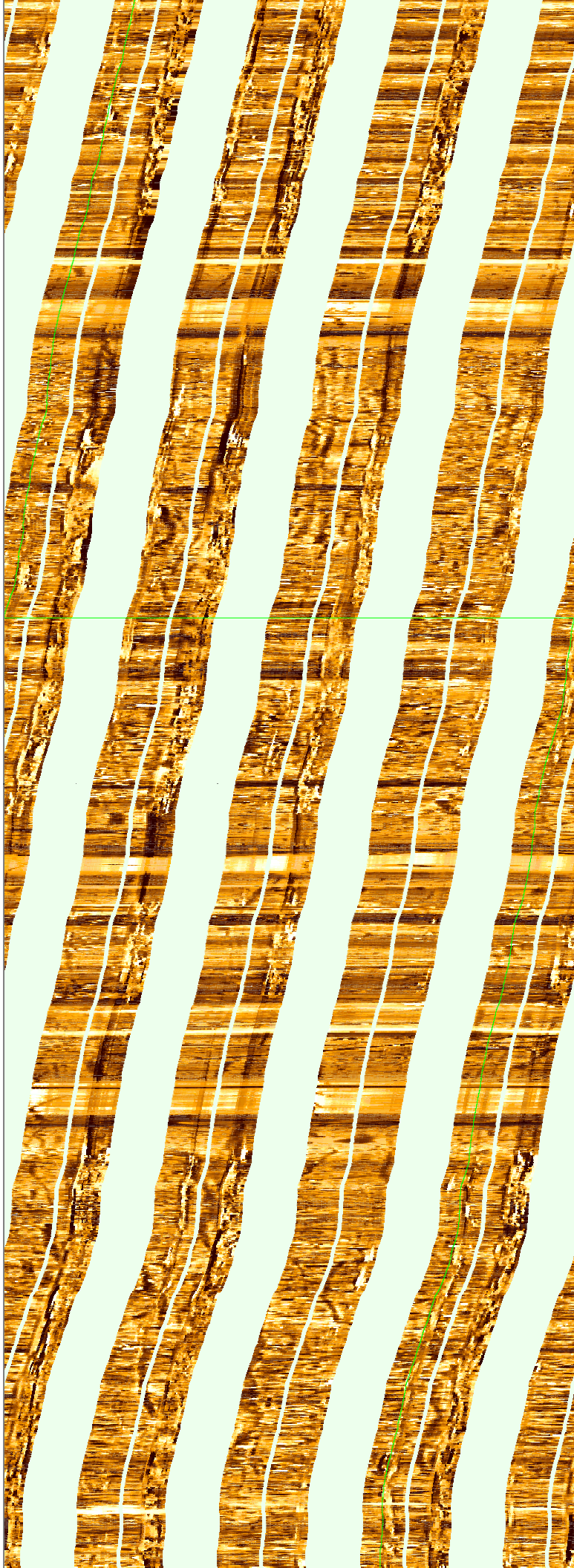
1530

1535

1540

1545

1550



1555

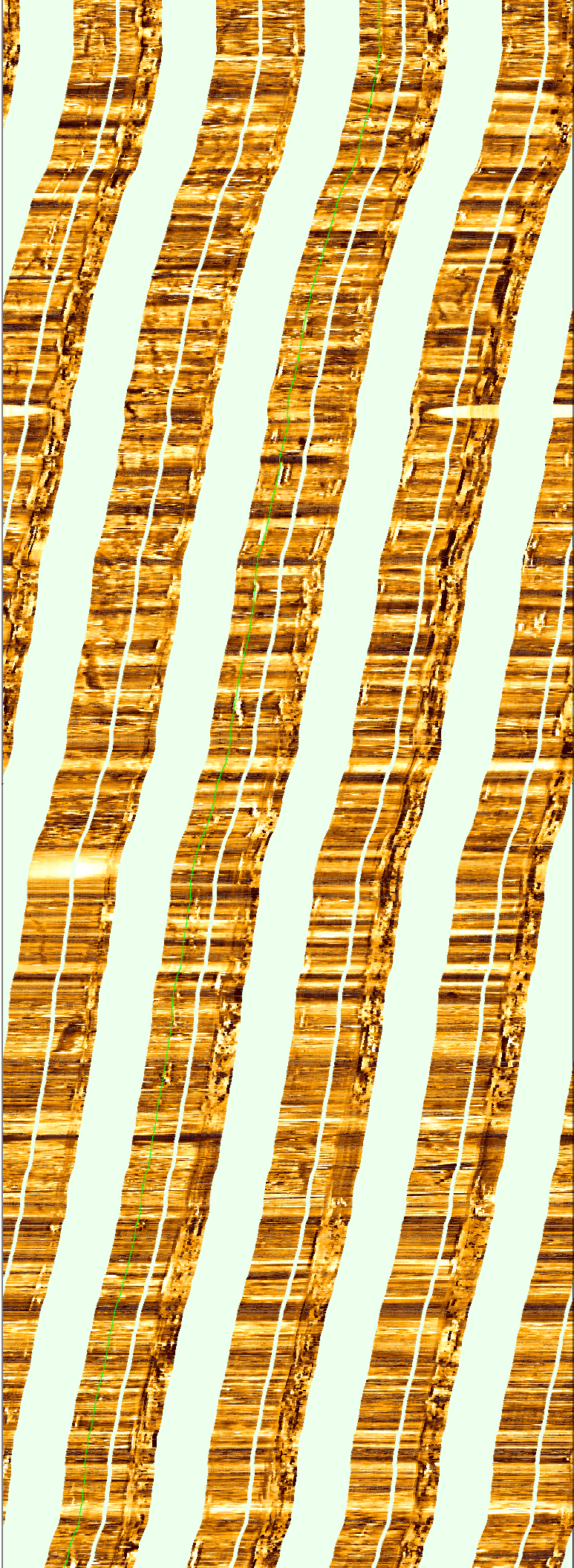
1560

1565

1570

1575

1580



1580

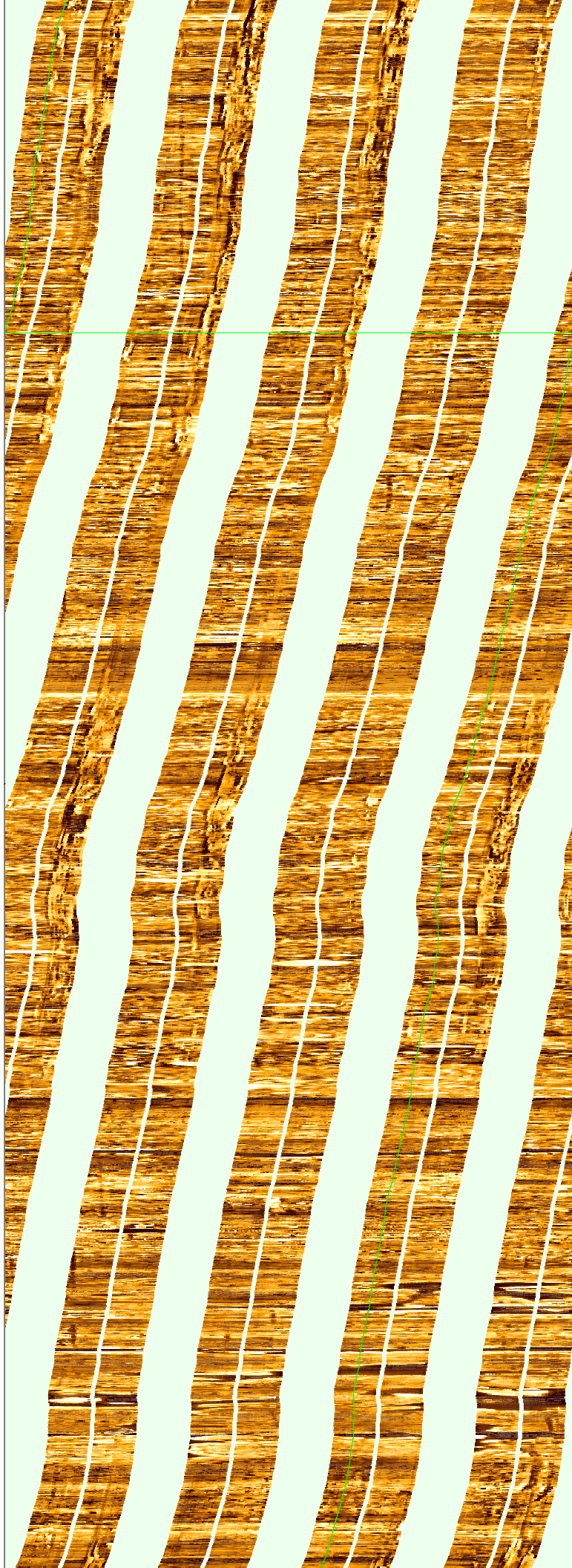
1585

1590

1595

1600

1605



1610

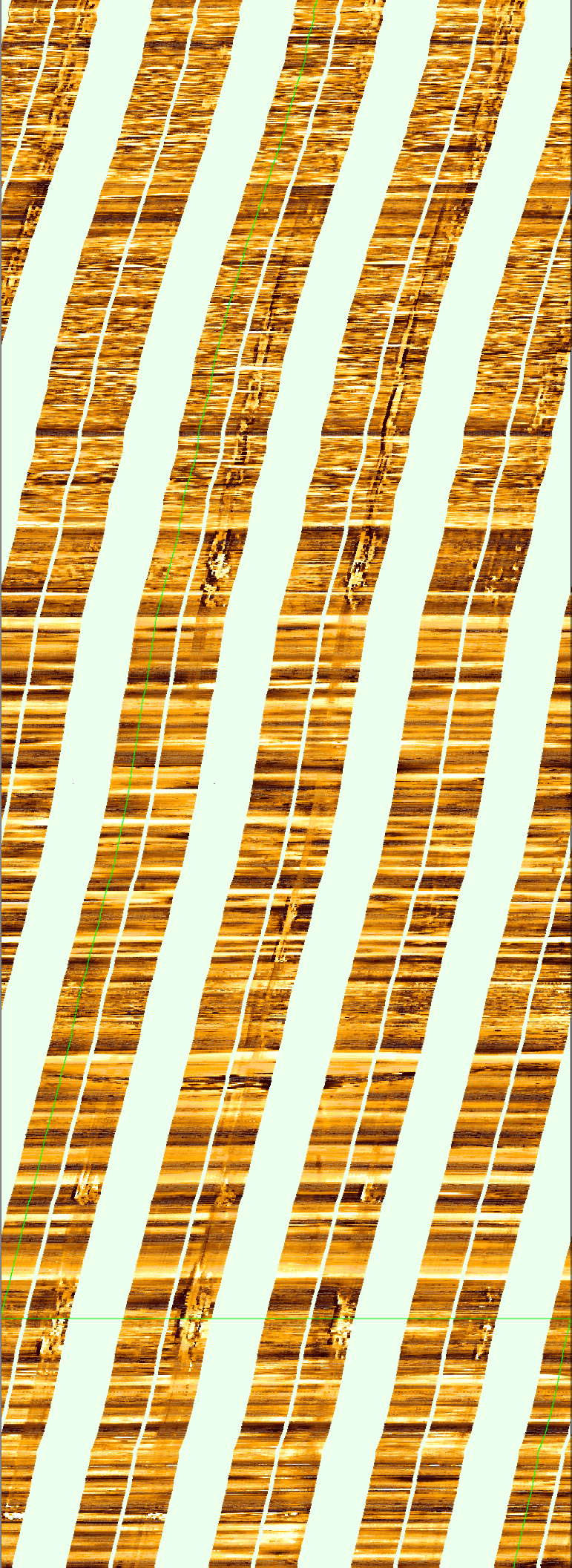
1615

1620

1625

1630

1635

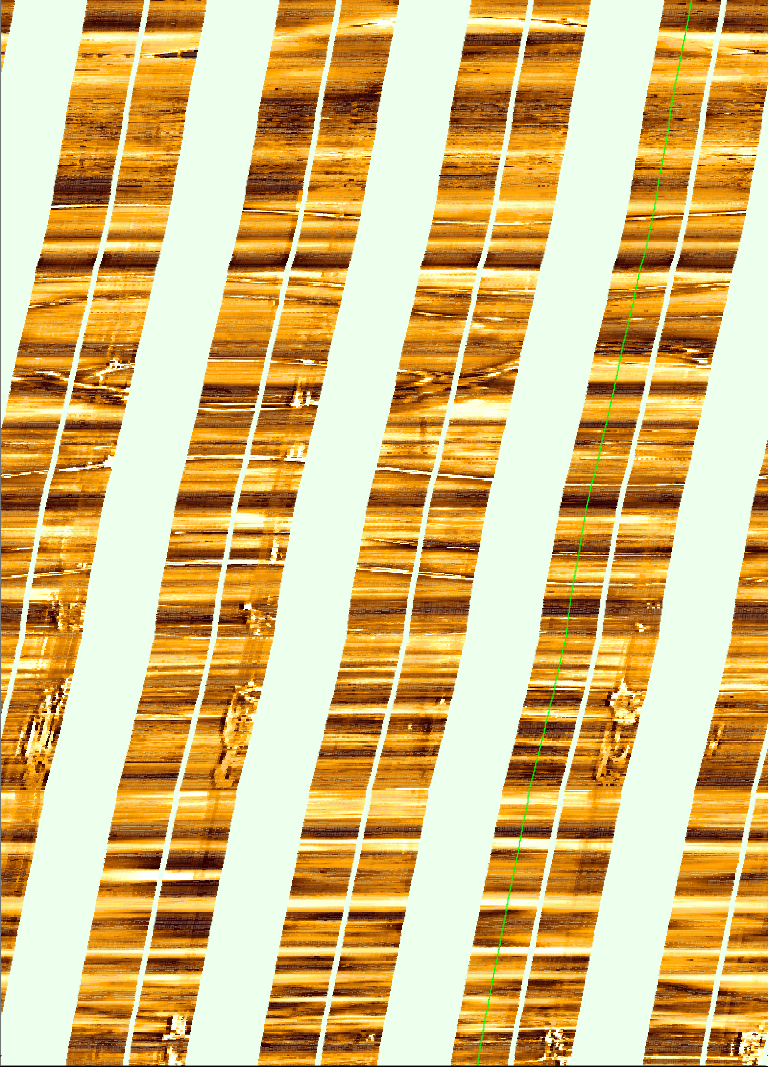


1640

1645

1650

MD
1 : 100
m



FMI_DSI_EMS_CAL_038PUC FMI .DYNA [C4814
Horizontal Scale: 1 : 8.345
Orientation North

