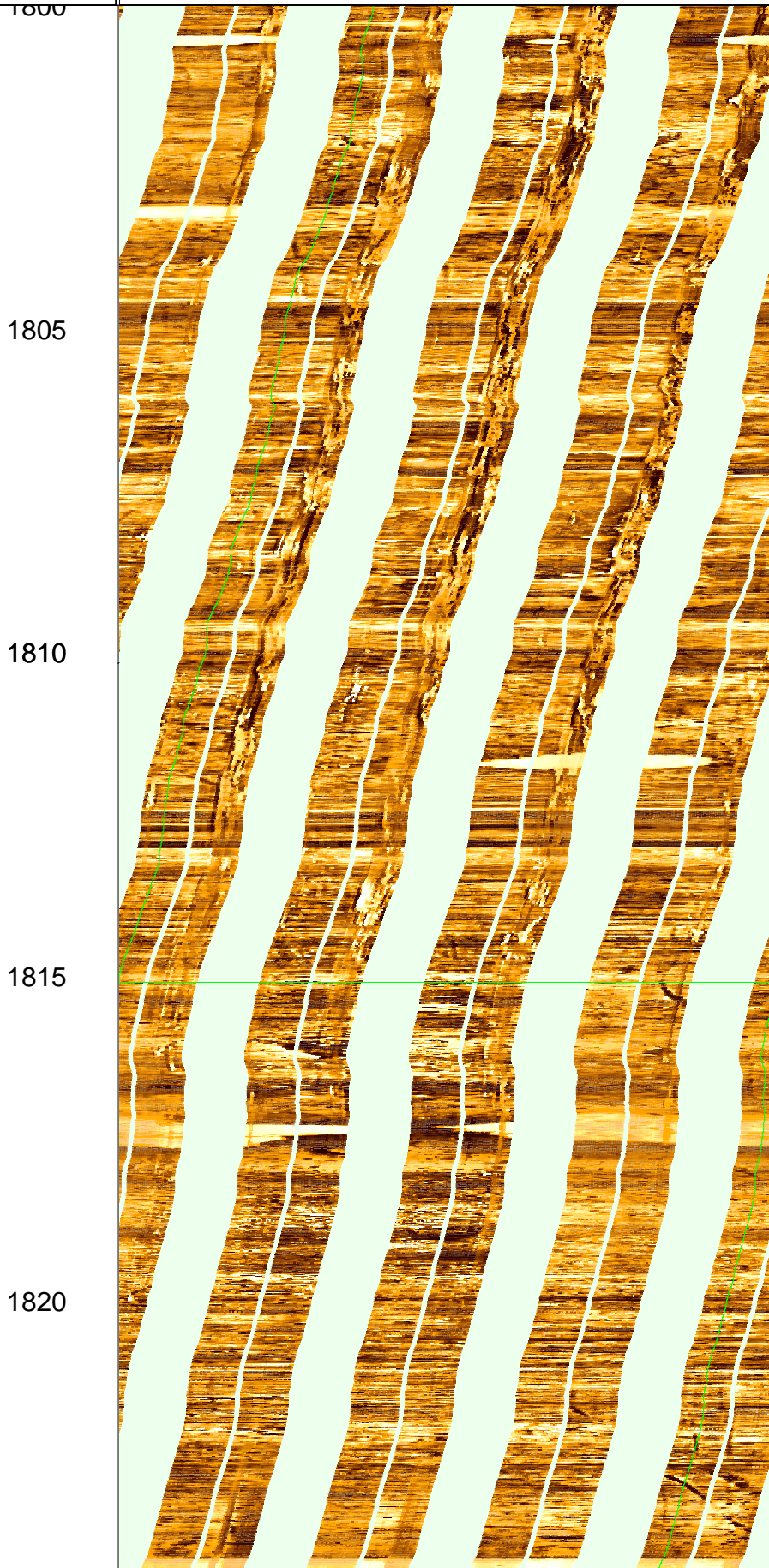


FMI_DSI_EMS_CAL_038PUC FMI .DYNA [C4814
Horizontal Scale: 1 : 8.345
Orientation North

0 120 240 360

MD
1 : 100
m

Resistive FMI Image Conductive



1800

1805

1810

1815

1820

1825

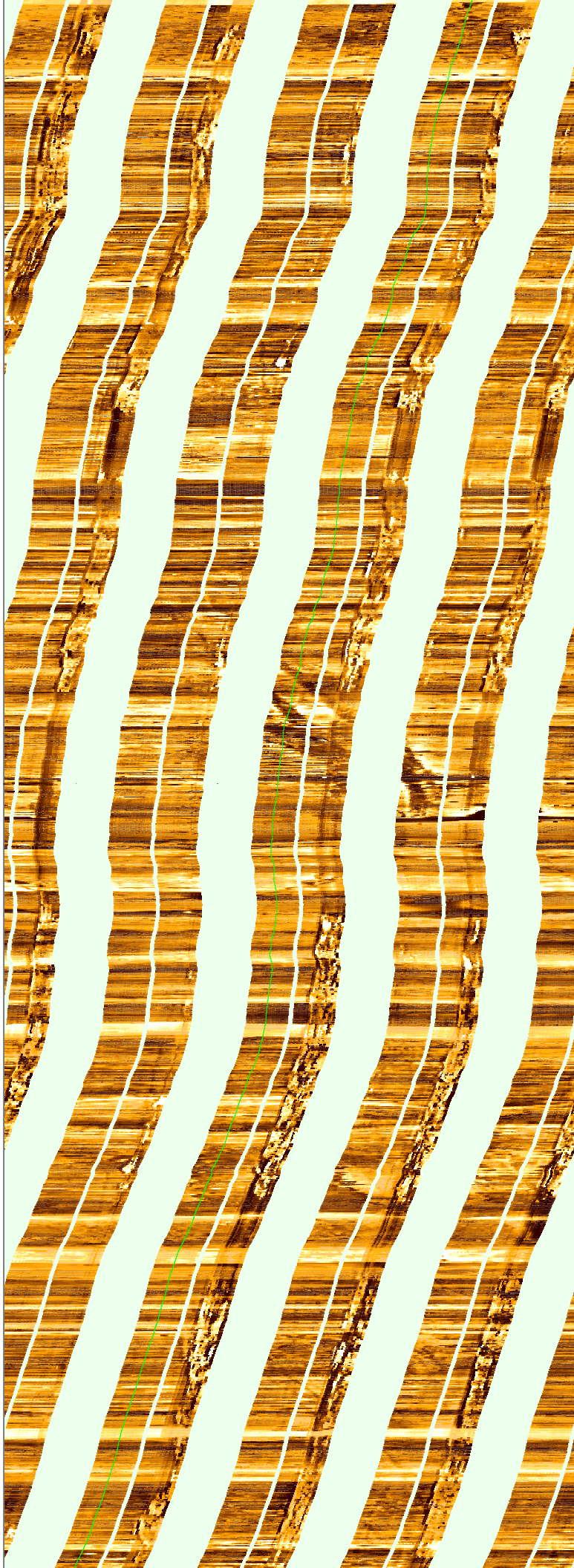
1830

1835

1840

1845

1850



1855

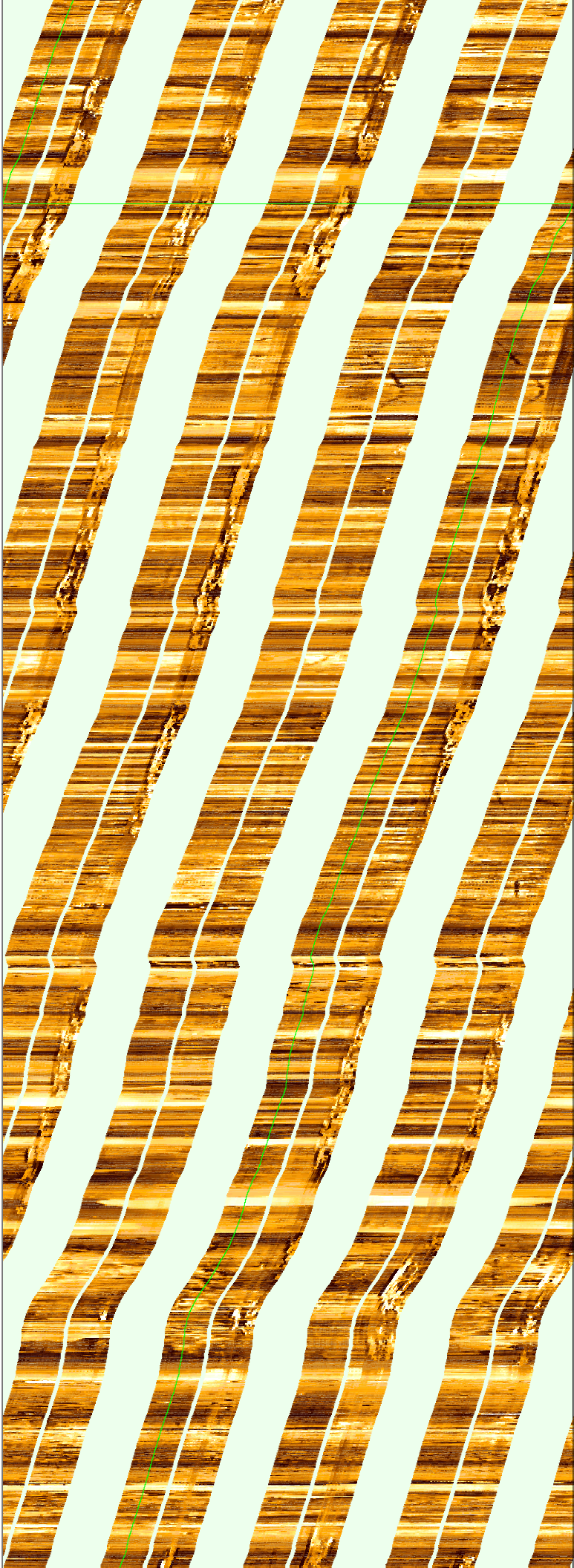
1860

1865

1870

1875

1880



1880

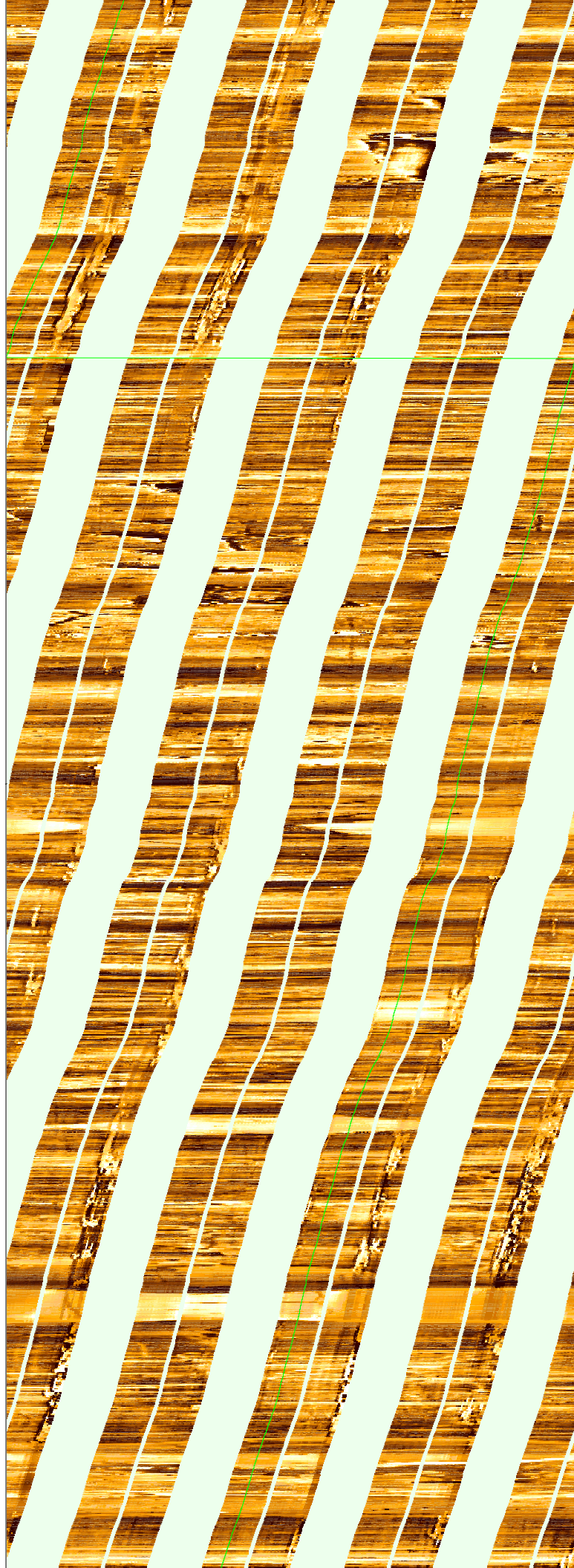
1885

1890

1895

1900

1905



1910

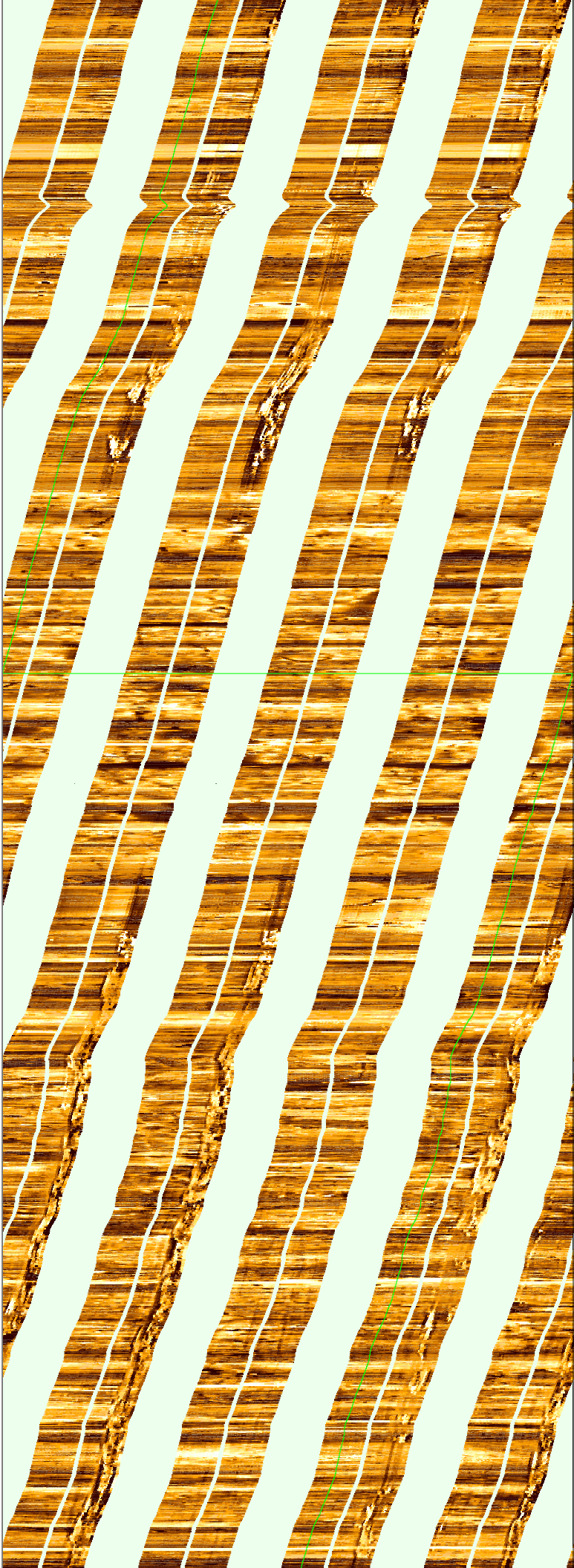
1915

1920

1925

1930

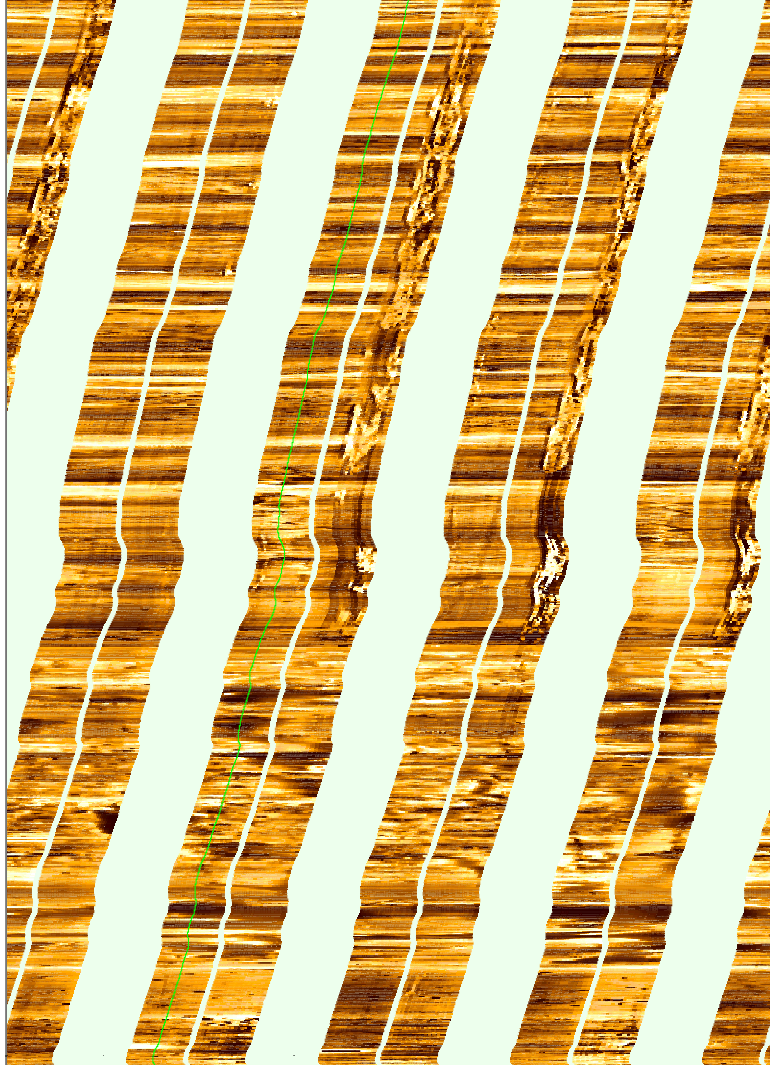
1935



1940

1945

1950
MD
1 : 100
m



FMI_DSI_EMS_CAL_038PUC FMI .DYNA [C4814
Horizontal Scale: 1 : 8.345
Orientation North

