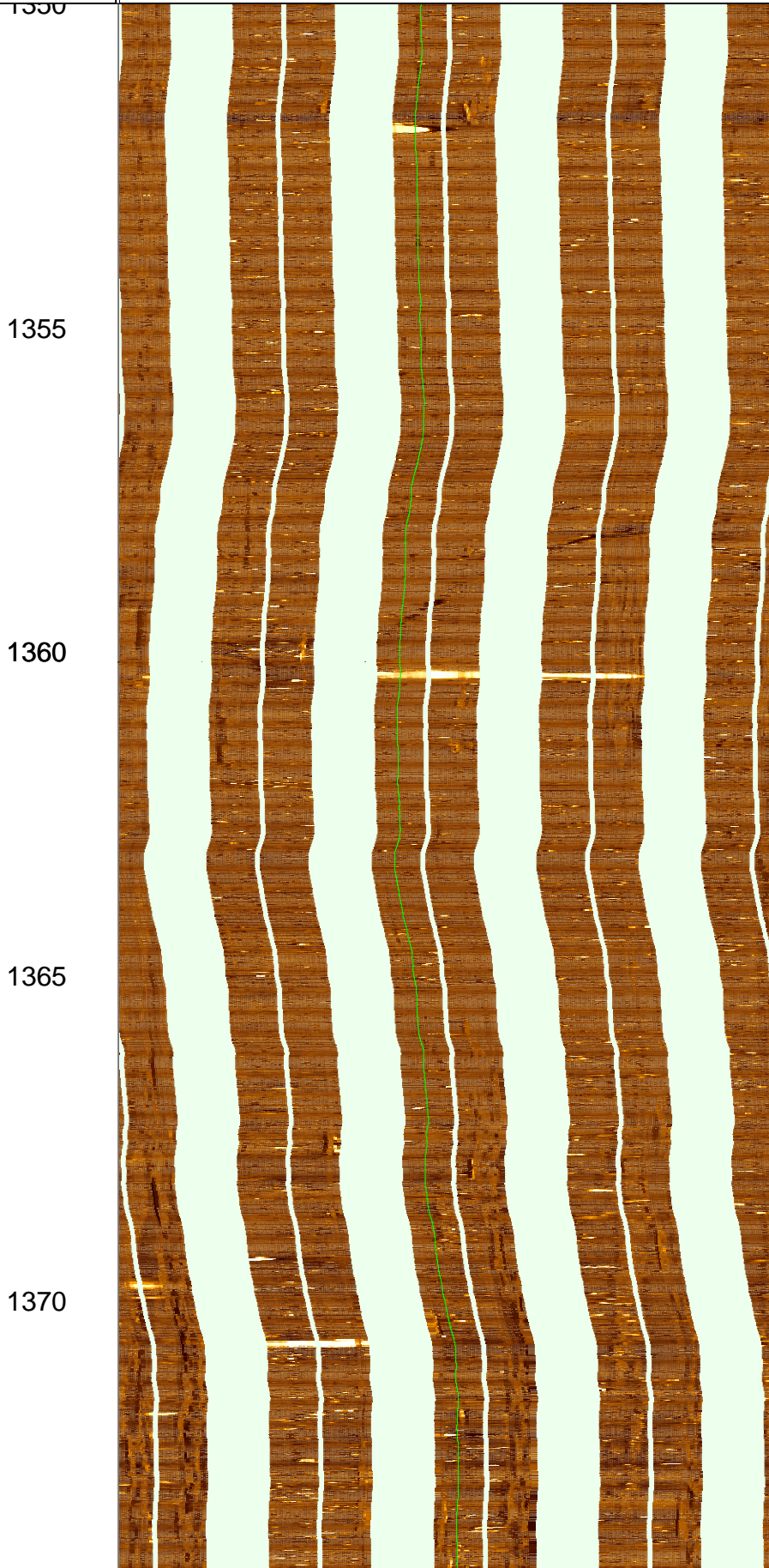


FMI_DSI_EMS_CAL_038PUC FMI .STAT [C4824
Horizontal Scale: 1 : 8.345
Orientation North

0 120 240 360

MD
1 : 100
m

Resistive FMI Image Conductive



1375

1380

1385

1390

1395

1400



1405

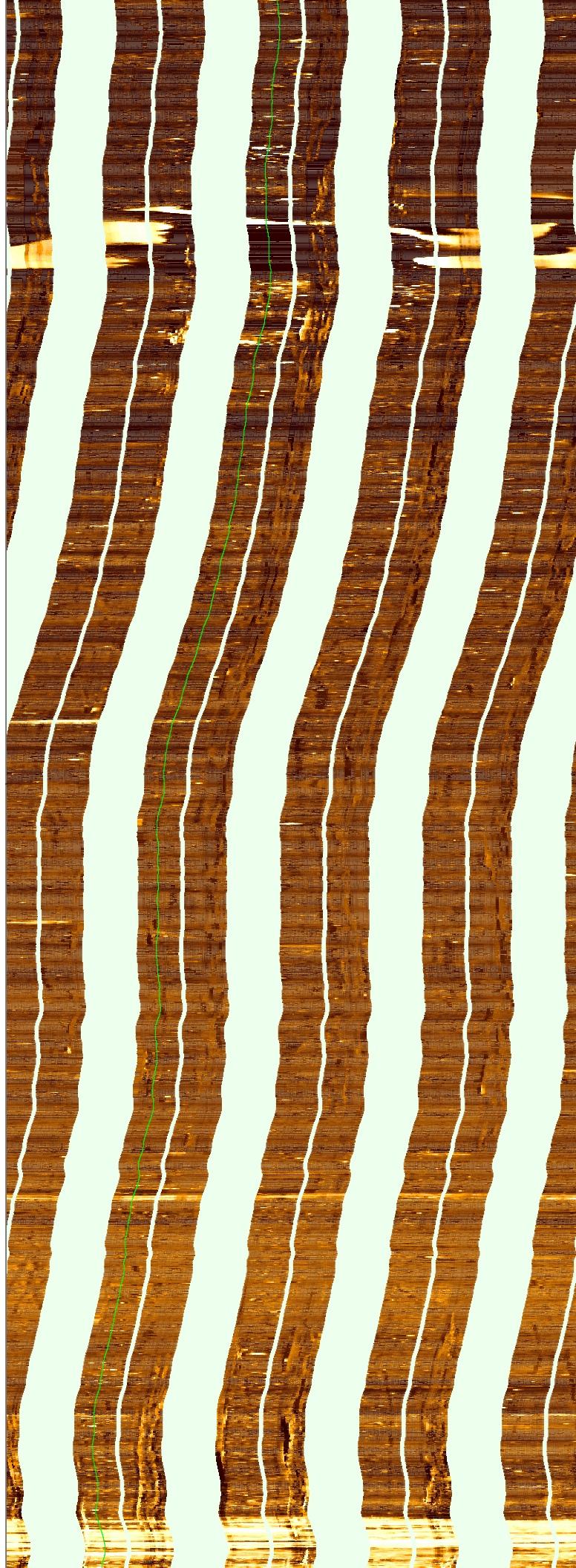
1410

1415

1420

1425

1430



1430

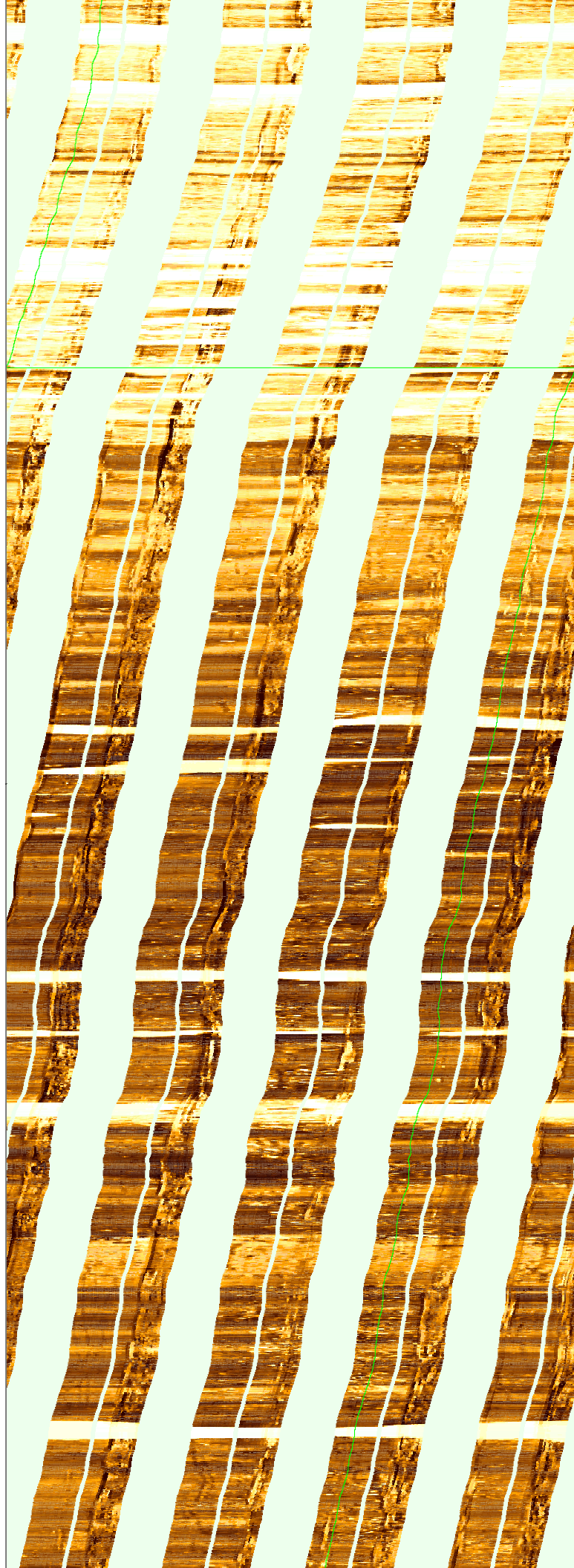
1435

1440

1445

1450

1455



1460

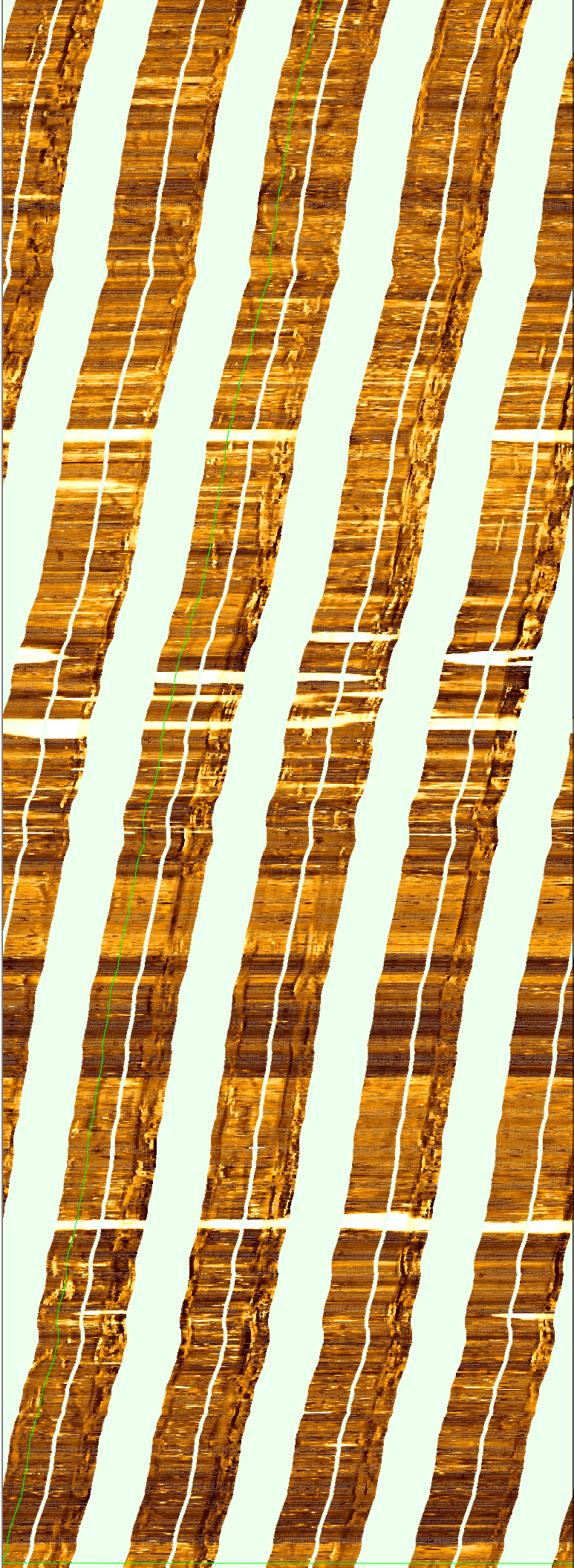
1465

1470

1475

1480

1485



1490

1495

1500

MD
1 : 100
m

FMI_DSI_EMS_CAL_038PUC FMI .STAT [C4824
Horizontal Scale: 1 : 8.345
Orientation North

0 120 240 360

Resistive FMI Image Conductive

