

FMI_DSI_EMS_CAL_038PUC FMI .STAT [C4824
Horizontal Scale: 1 : 8.345
Orientation North

0 120 240 360

MD
1 : 100
m

Resistive FMI Image Conductive



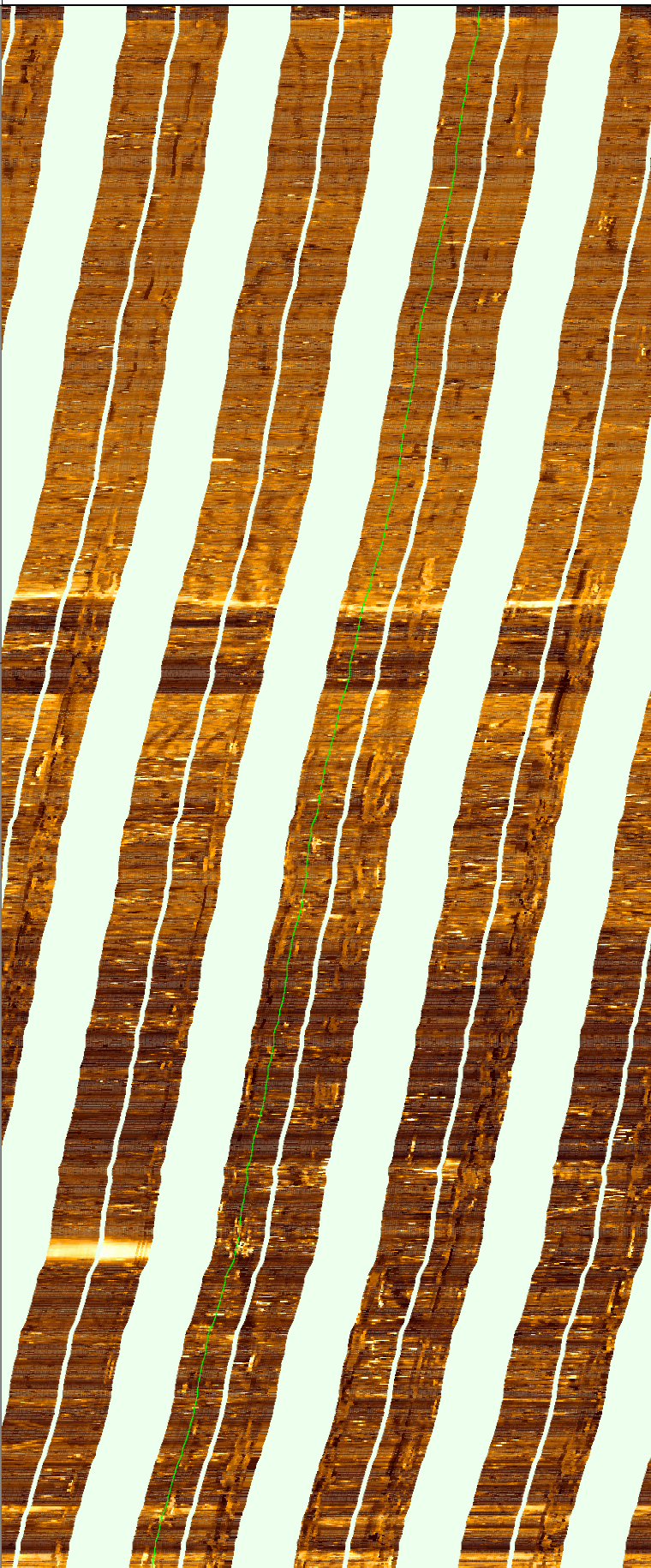
1500

1505

1510

1515

1520



1525

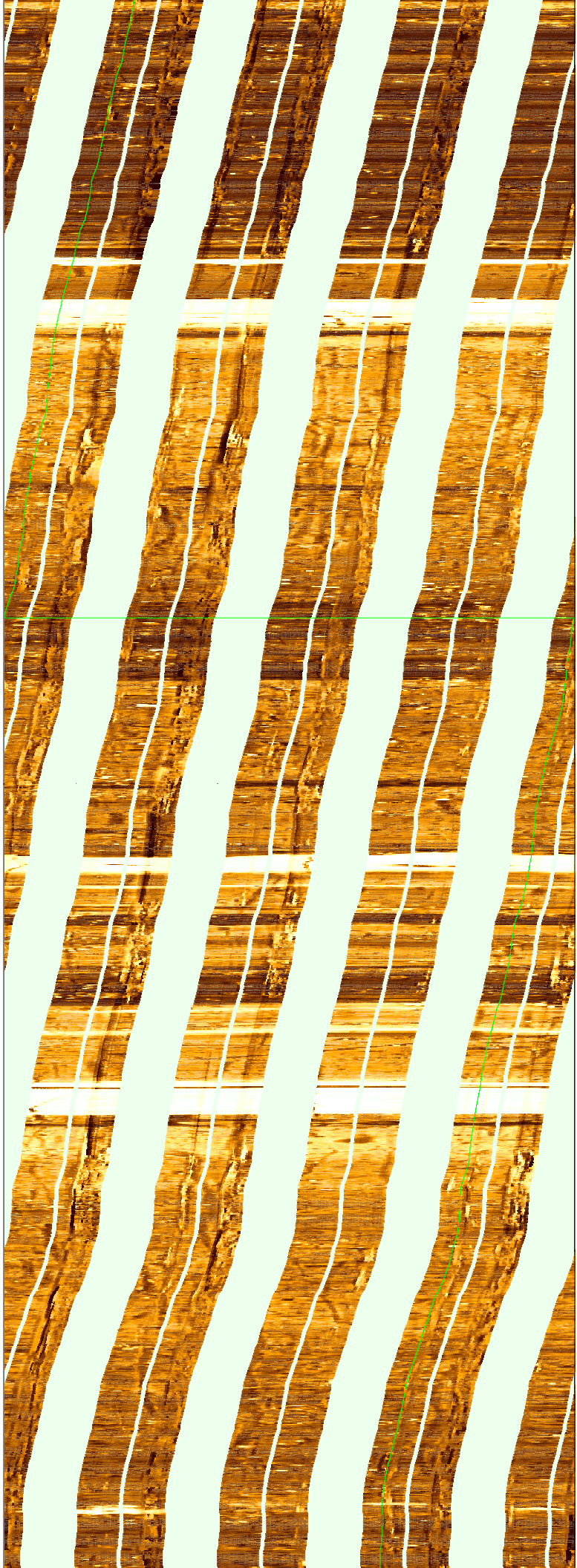
1530

1535

1540

1545

1550



1555

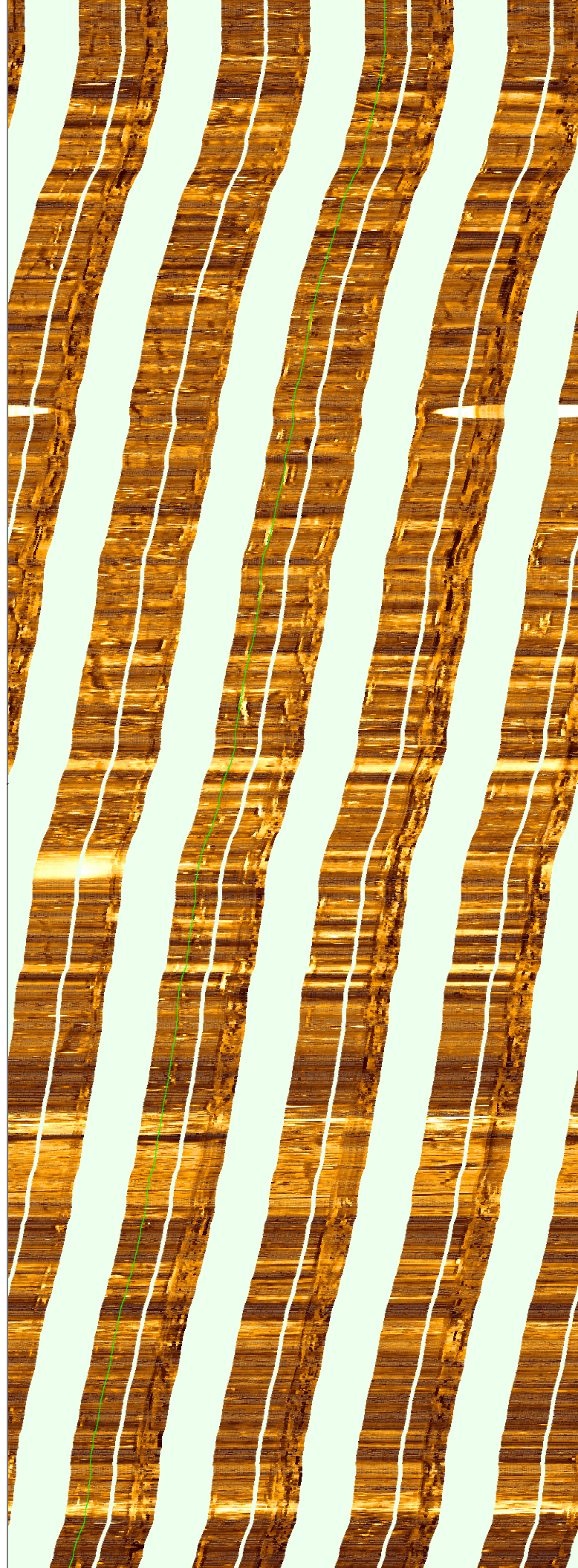
1560

1565

1570

1575

1580



1580

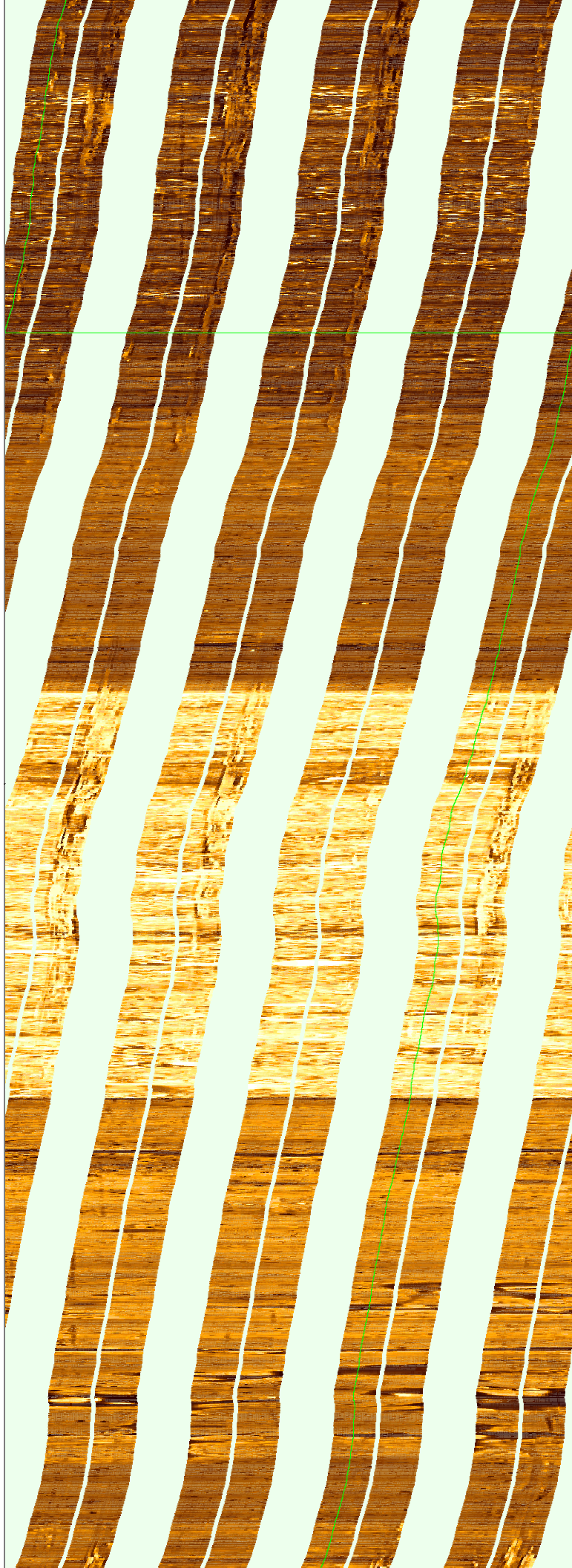
1585

1590

1595

1600

1605



1610

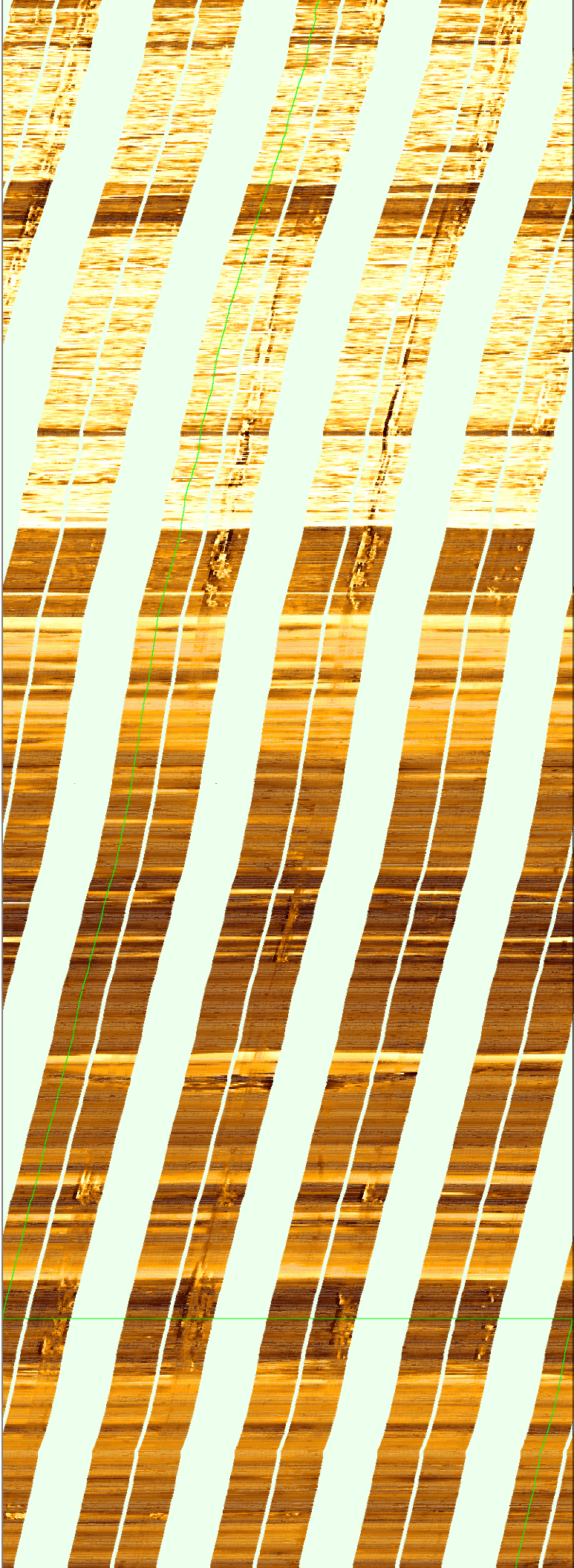
1615

1620

1625

1630

1635

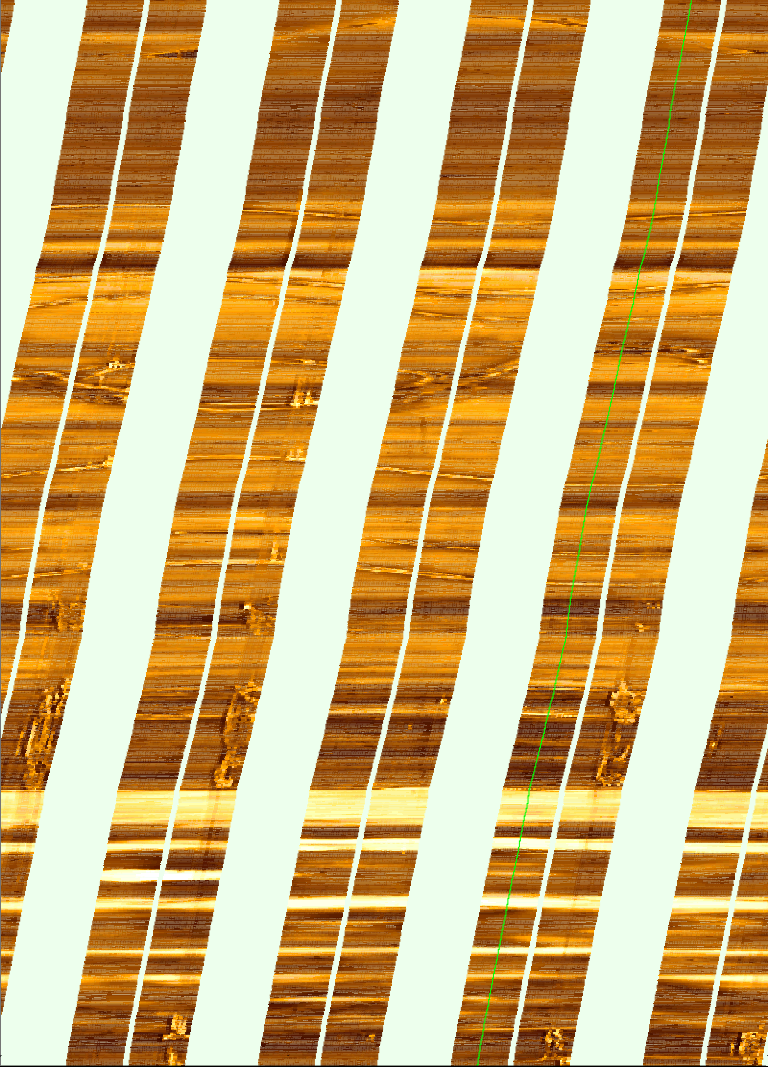


1640

1645

1650

MD
1 : 100
m



FMI_DSI_EMS_CAL_038PUC FMI .STAT [C4824
Horizontal Scale: 1 : 8.345
Orientation North

