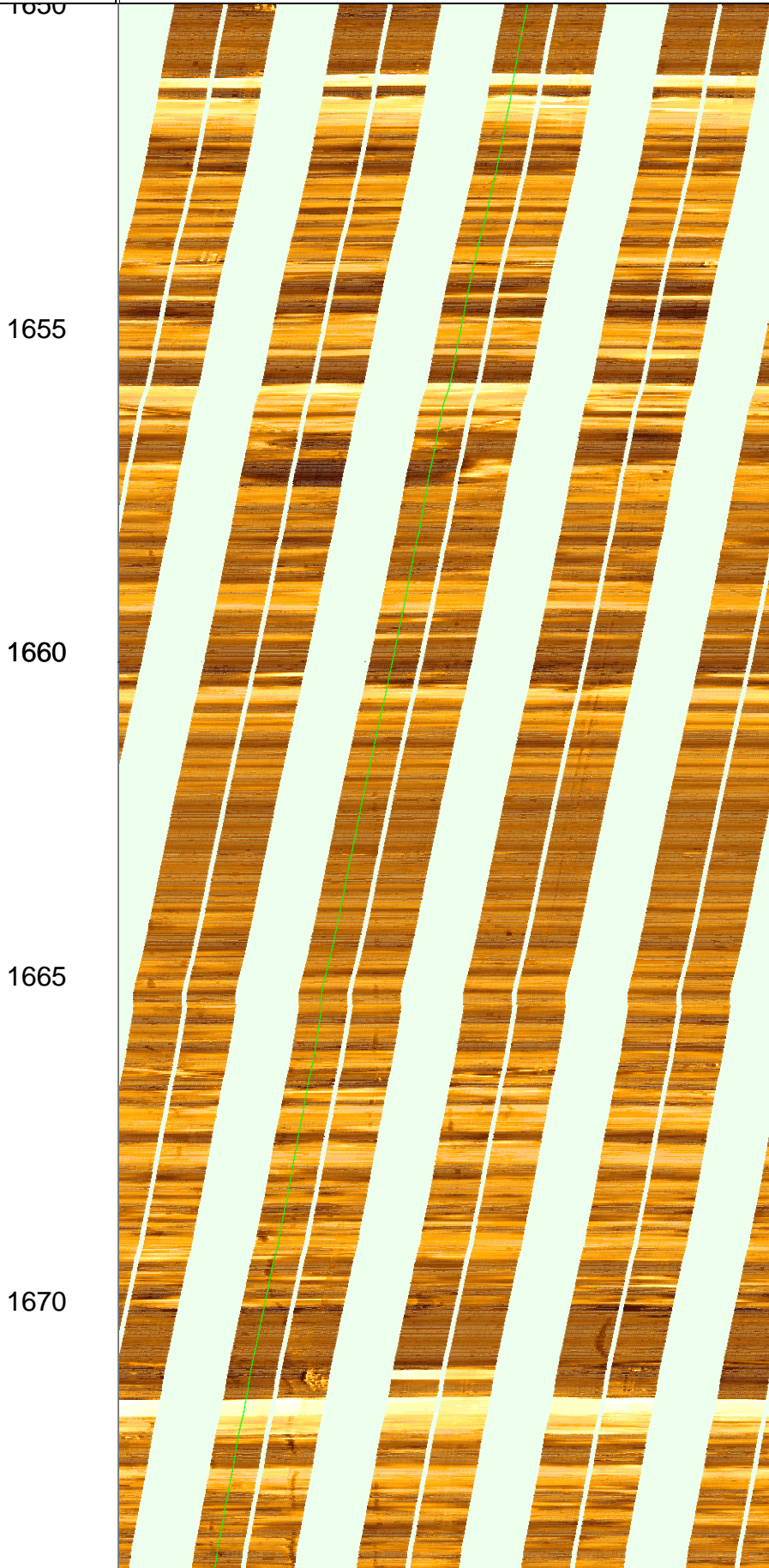


FMI_DSI_EMS_CAL_038PUC FMI .STAT [C4824
Horizontal Scale: 1 : 8.345
Orientation North

0 120 240 360

MD
1 : 100
m

Resistive FMI Image Conductive



1675

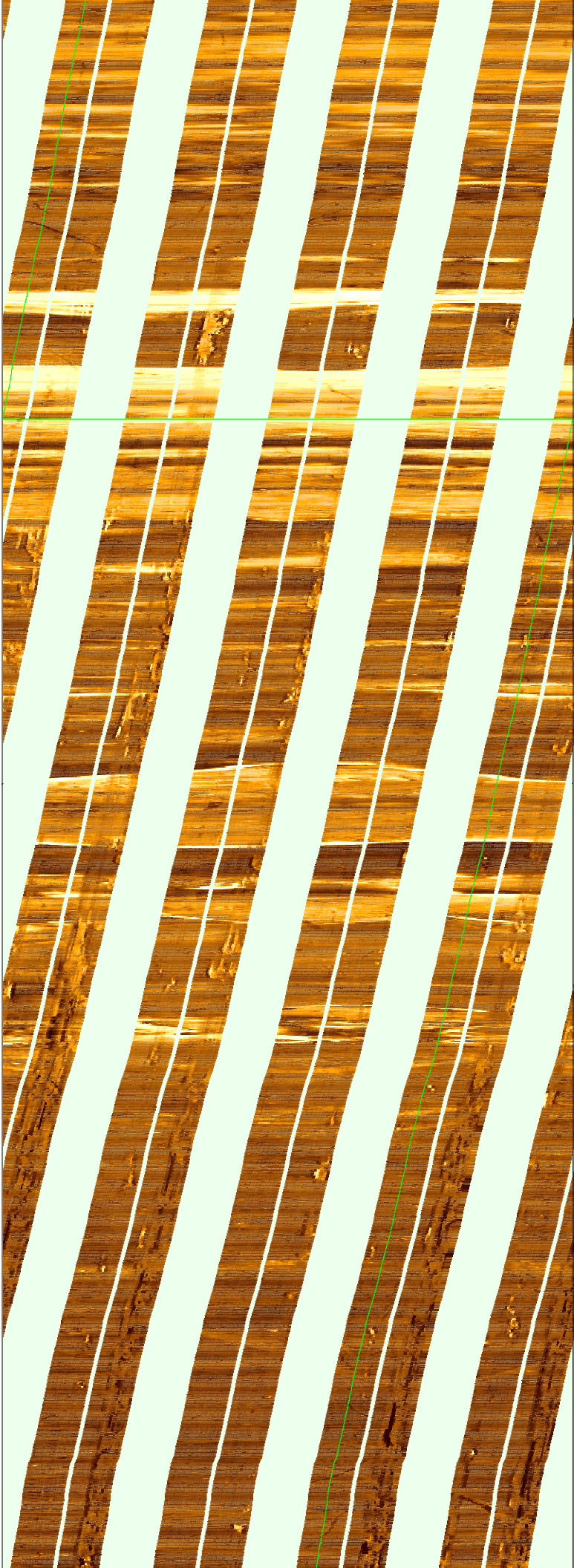
1680

1685

1690

1695

1700



1705

1710

1715

1720

1725

1730



1730

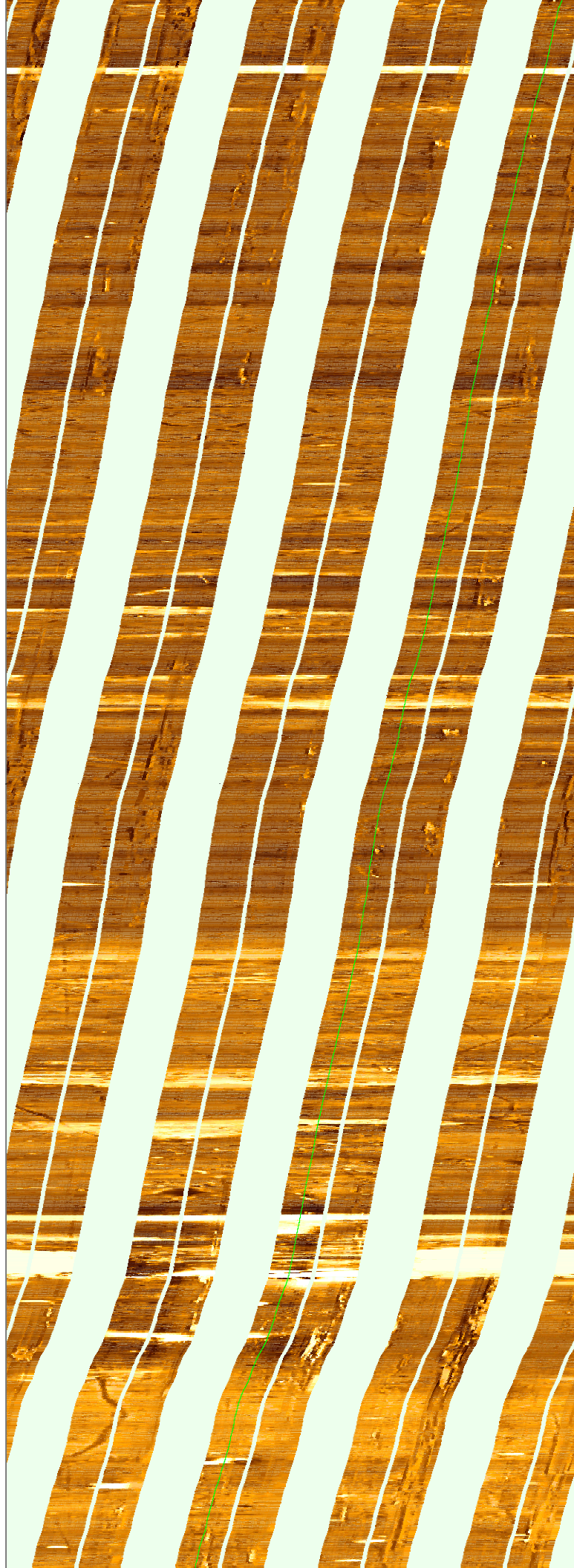
1735

1740

1745

1750

1755



1760

1765

1770

1775

1780

1785



1790

1795

1800

MD
1 : 100
m

FMI_DSI_EMS_CAL_038PUC FMI .STAT [C4824
Horizontal Scale: 1 : 8.345
Orientation North

0 120 240 360

Resistive FMI Image Conductive

