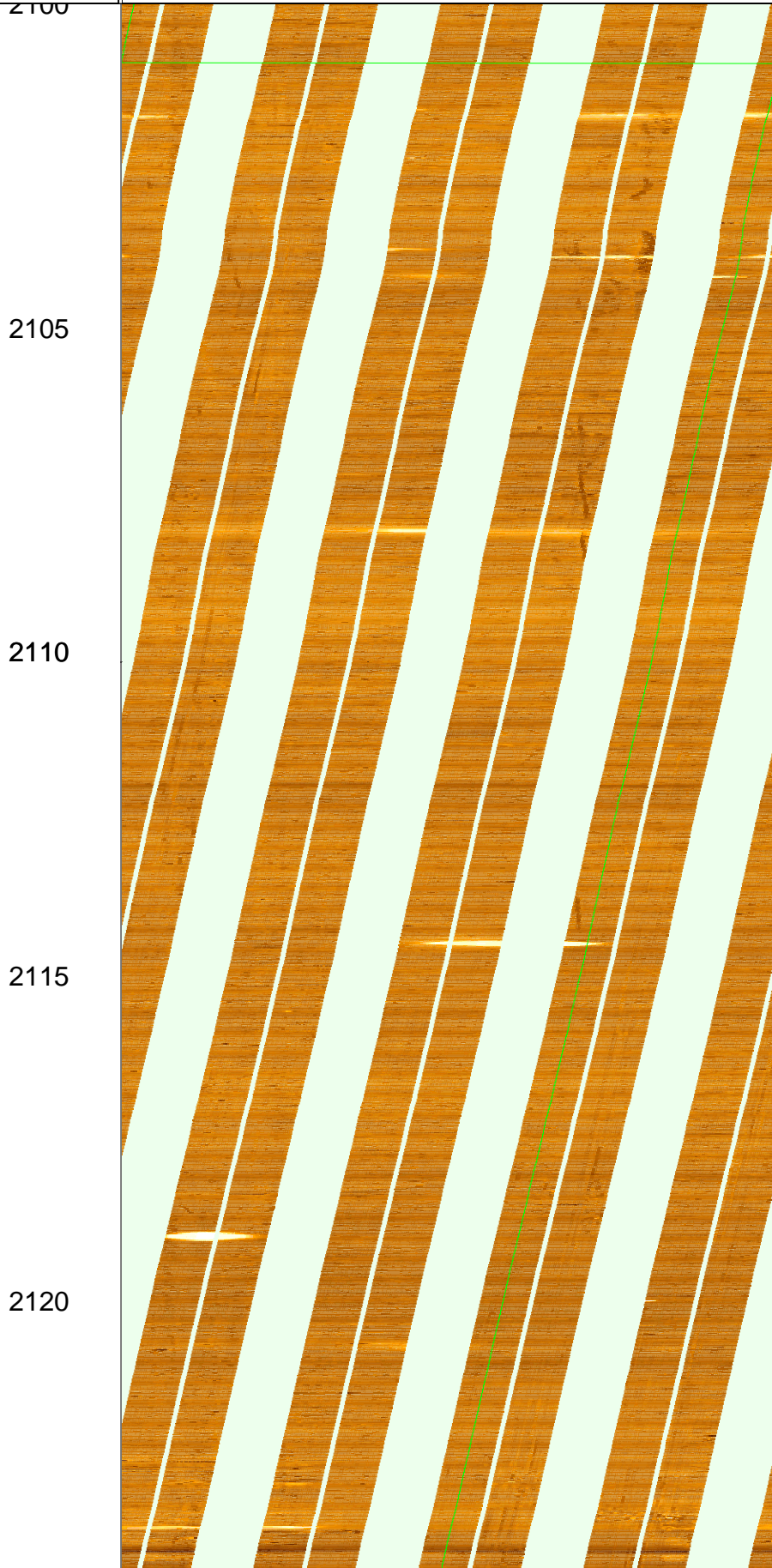


FMI_DSI_EMS_CAL_038PUC FMI .STAT [C4824
Horizontal Scale: 1 : 8.345
Orientation North

0 120 240 360

MD
1 : 100
m

Resistive FMI Image Conductive



2105

2110

2115

2120

2125

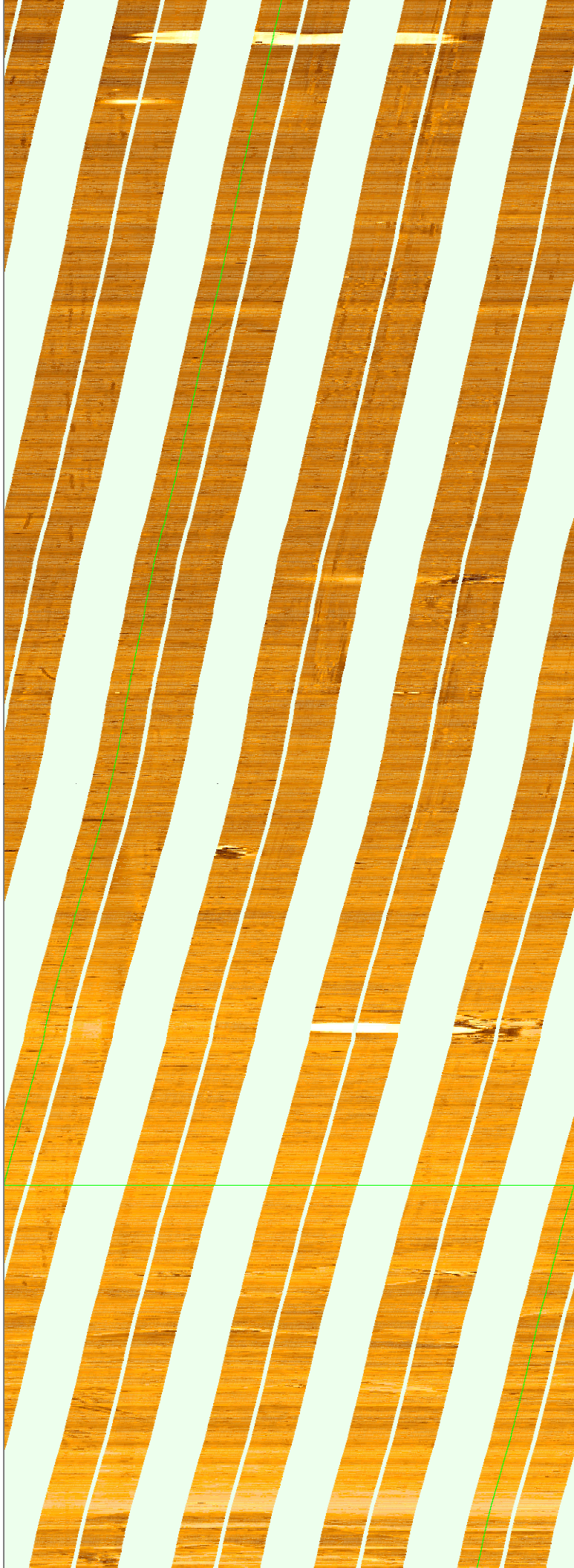
2130

2135

2140

2145

2150



2155

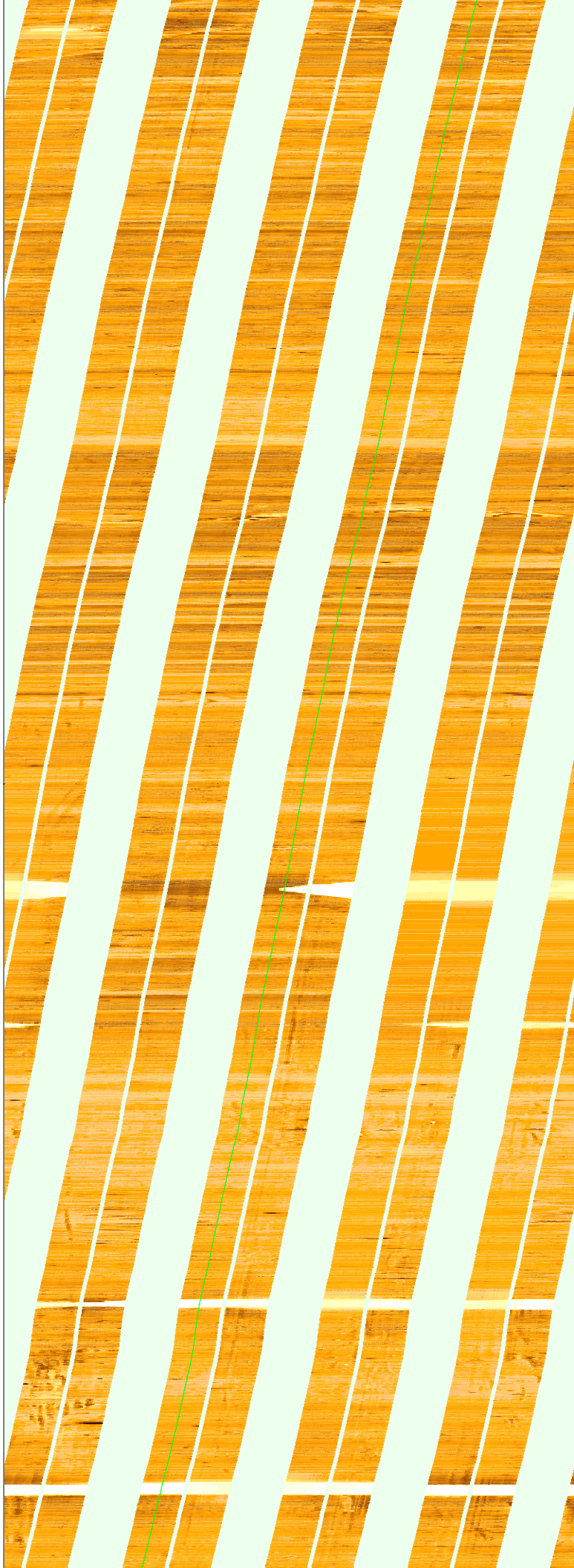
2160

2165

2170

2175

2180



2180

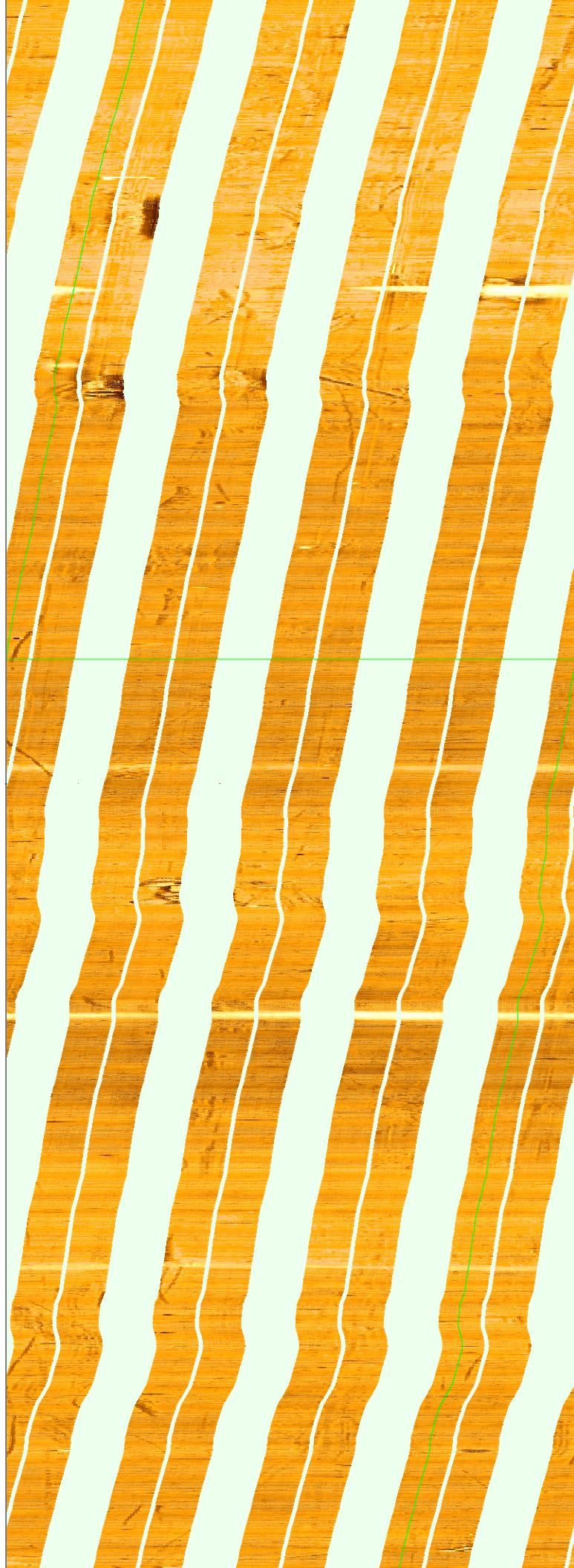
2185

2190

2195

2200

2205



2210

2215

2220

2225

2230

2235

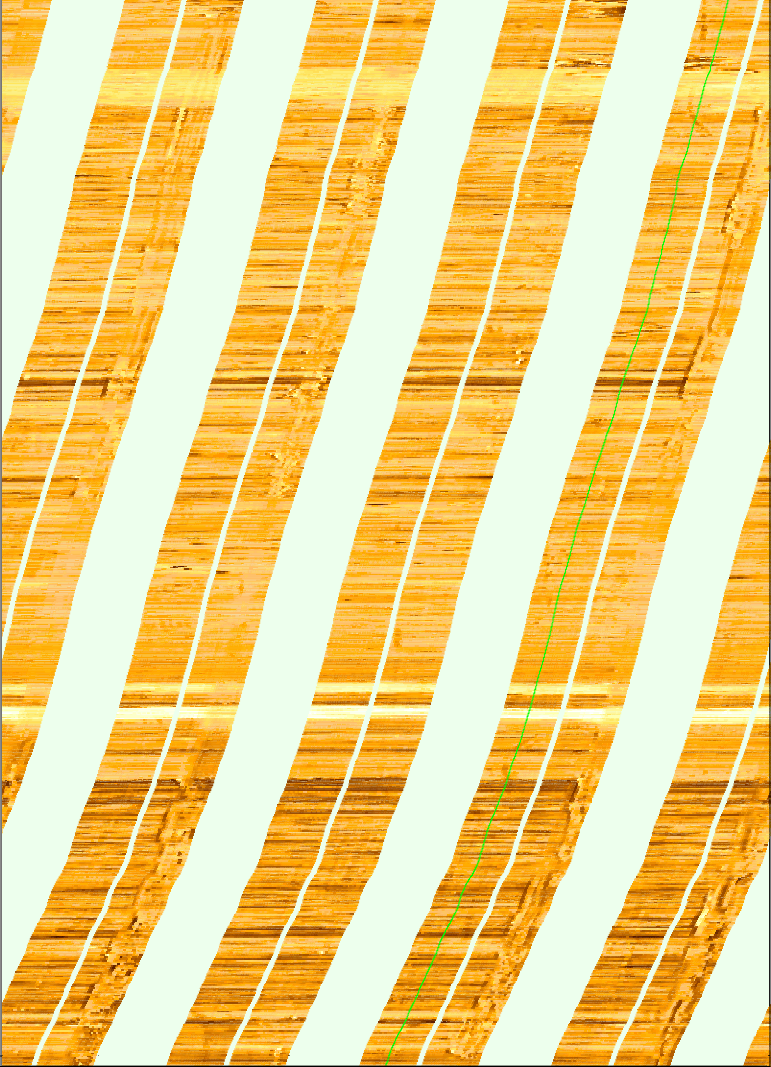


2240

2245

2250

MD
1 : 100
m



FMI_DSI_EMS_CAL_038PUC FMI .STAT [C4824
Horizontal Scale: 1 : 8.345
Orientation North

