

FMI_DSI_EMS_CAL_038PUC FMI .STAT [C4824
Horizontal Scale: 1 : 8.345
Orientation North

0 120 240 360

MD
1 : 100
m

Resistive FMI Image Conductive



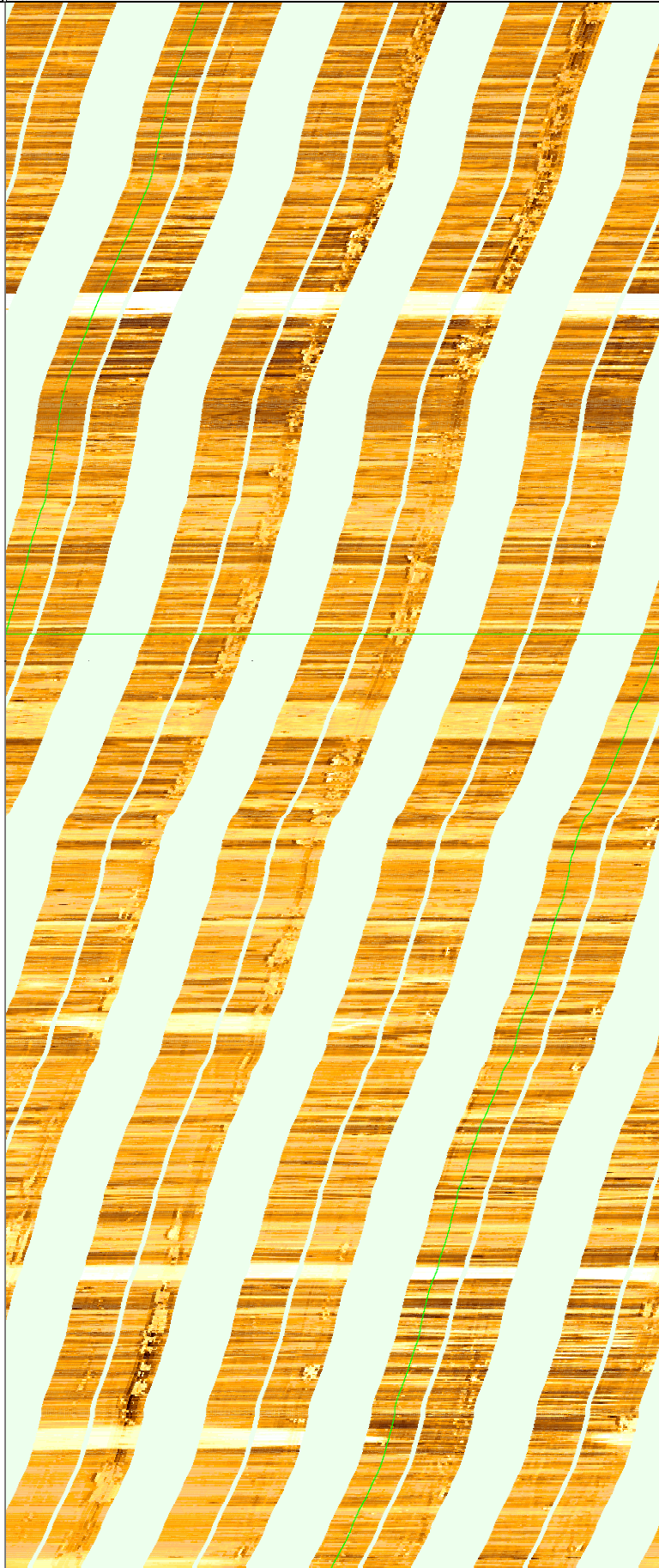
2400

2405

2410

2415

2420



2425

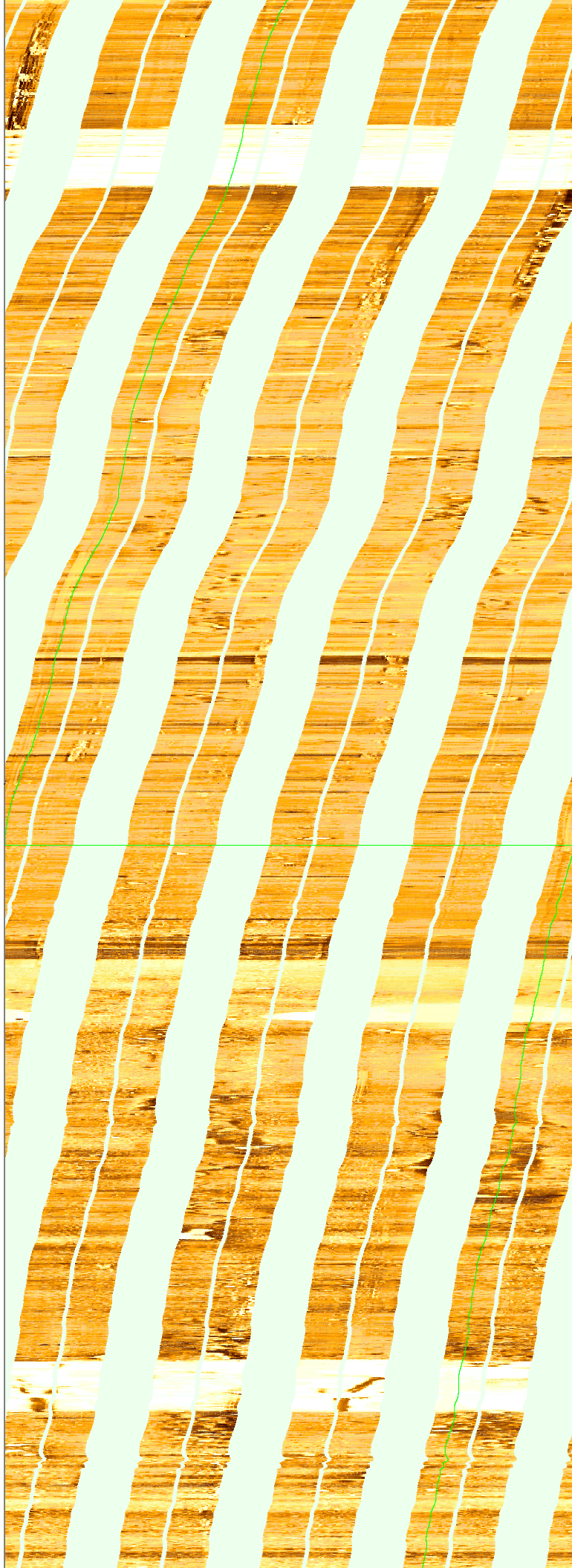
2430

2435

2440

2445

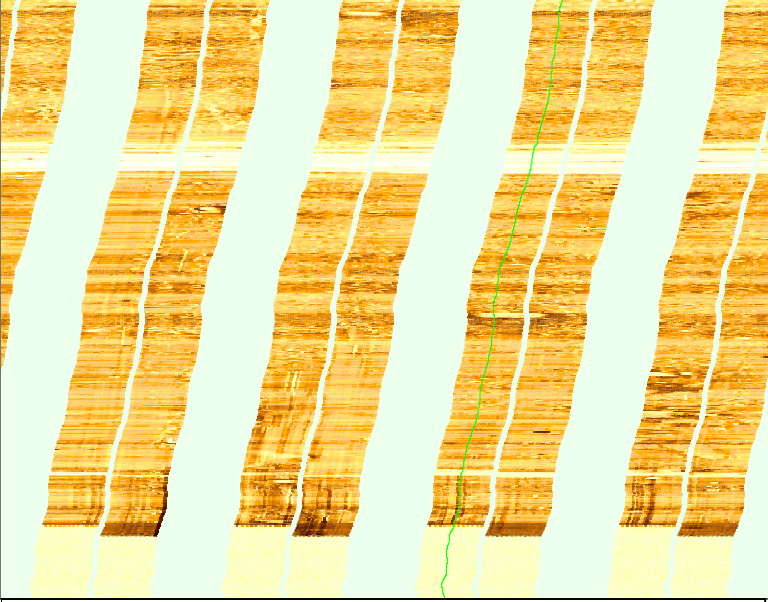
2450



2455

2460

MD
1 : 100
m



FMI_DSI_EMS_CAL_038PUC FMI .STAT [C4824
Horizontal Scale: 1 : 8.345
Orientation North

0 120 240 360

