



GEOFRAME  
PROCESSED  
INTERPRETATION

BestDT\*  
Final Result  
Custom Sonic Processing

\*A Mark of Schlumberger

Using the following logs:

FMI-DSI-EMS-PPC  
PEX-HRLA-HNGS

COMPANY: JAMSTEC

WELL: C0020A

FIELD: C0020

County:

Pref. Aomori

COUNTRY: Japan

Date Logged: 9-Sep-2012

Date Processed:

Well Location: Shimokita-oki

X= 600698.8 M

Elevations: KB: 28.5m

DF: 28.5m

GL: -118m

API Number:

Job Number:

FOLD HERE The well name, location and borehole reference data were furnished by the customer.

Any interpretation, research, analysis, data, results, estimates, or recommendation furnished with the services or otherwise communicated by Schlumberger to the customer at any time in connection with the services are opinions based on inferences from measurements, empirical relationships, and/or assumptions; which, inferences, empirical relationships and/or assumptions are not infallible and with respect to which professionals in the industry may differ. Accordingly, Schlumberger cannot and does not warrant the accuracy, correctness, or completeness of any such interpretation, research, analysis, data, results, estimates, or recommendation. The customer acknowledges that it is accepting the services "as is," that Schlumberger makes no representation or warranty, express or implied, of any kind or description in respect thereto, and that such services are delivered with the explicit understanding and agreement that any action taken based on the services received shall be at its own risk and responsibility, and no claim shall be made against Schlumberger as a consequence thereof.

@ 2010 Schlumberger. All rights reserved.

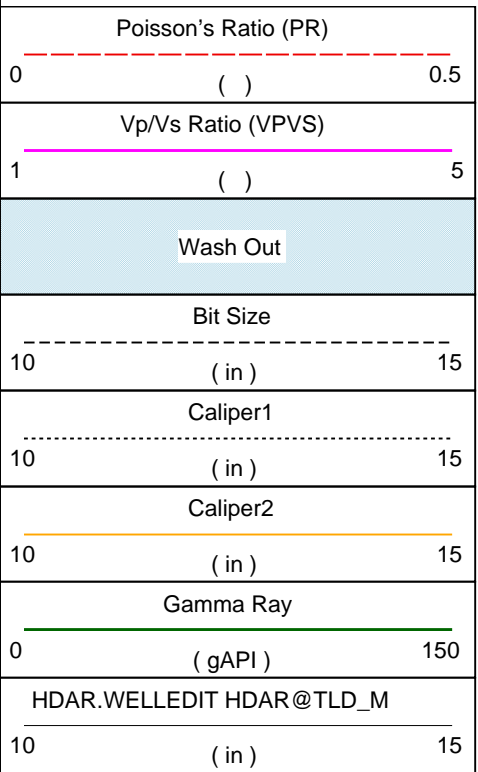
Field Recording:	Location: JPOP	Software Version: 19C1-222	Engineer: Liu Jie/Montague/Kang Yc
Office Recording:	ICS Center:	Baseline: RHEL5.4 GF4.5 DC6	Log Analyst: Tadahiro NAGANO

Mud and Borehole Measurements:			
Rm @ Measured Temperature:	0.082ohm.m @ 24.6degC	BHT: 60degC	Bitsize: 10.625in
Rmf @ Measured Temperature:	0.0728ohm.m @ 23.3degC	Type Fluid in Hole:	KNPPmud
Rmc @ Measured Temperature:	0.0949ohm.m @ 25.6degC	Mud Density: 1.11g/cm3	

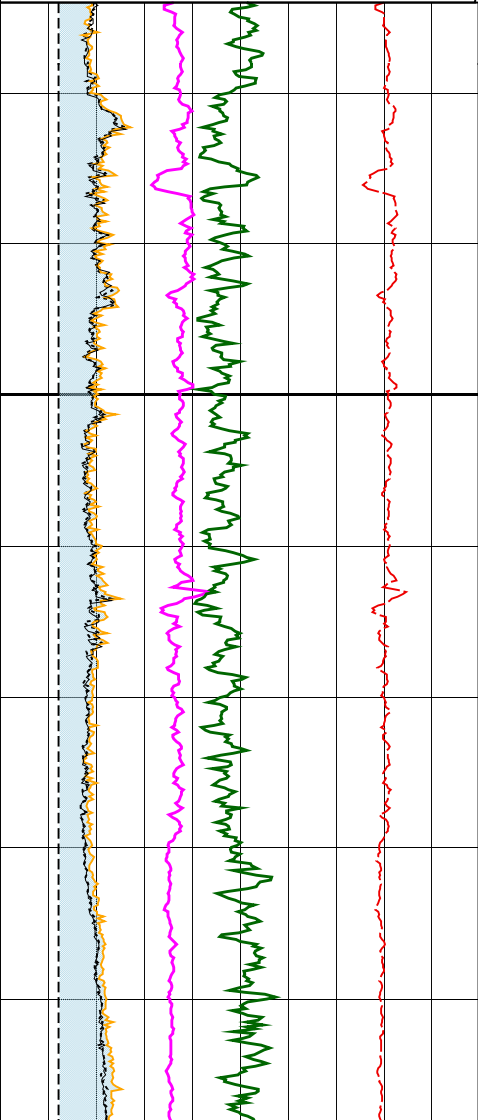
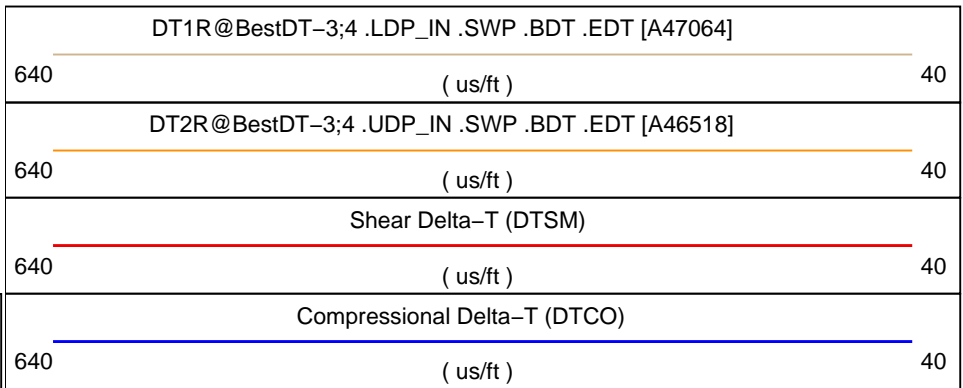
Remarks:

MD depth index from MSL.

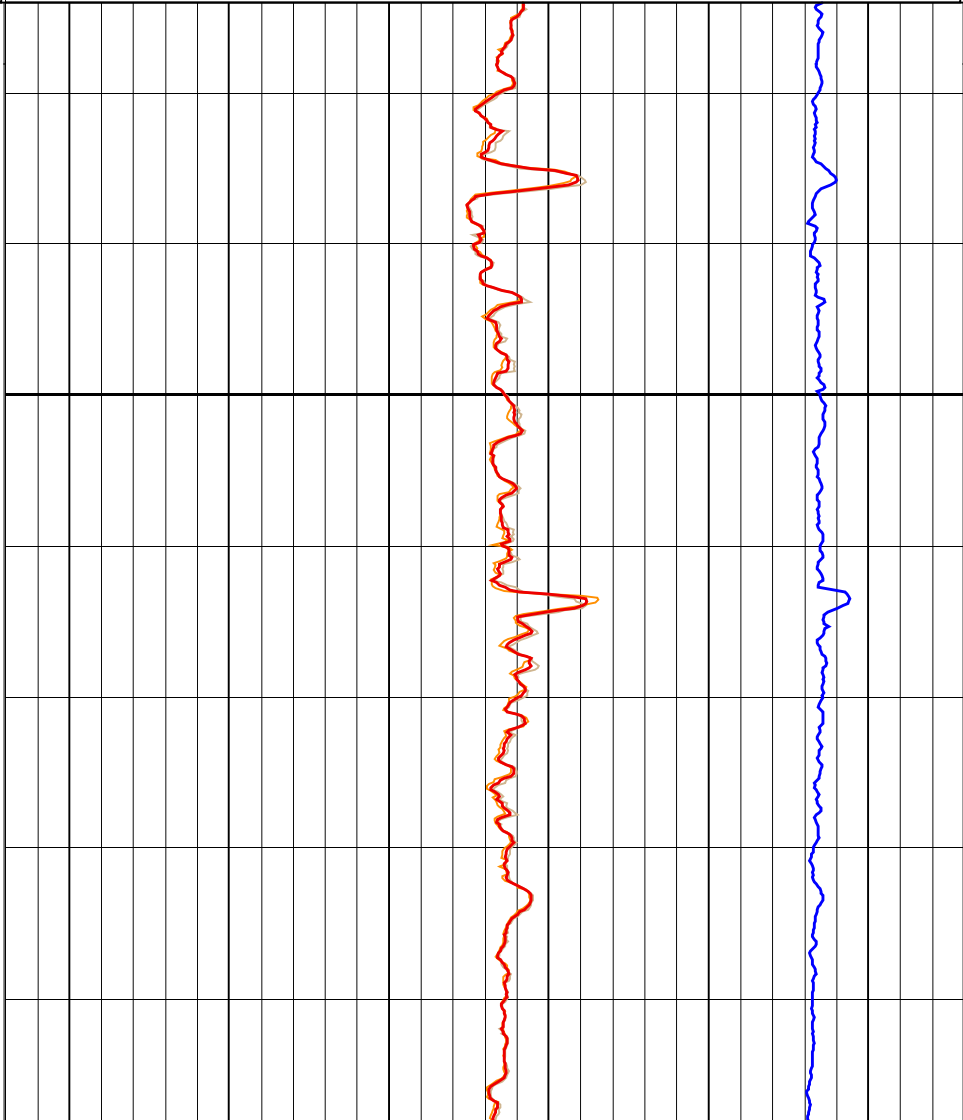
HDAR was used for caliper.

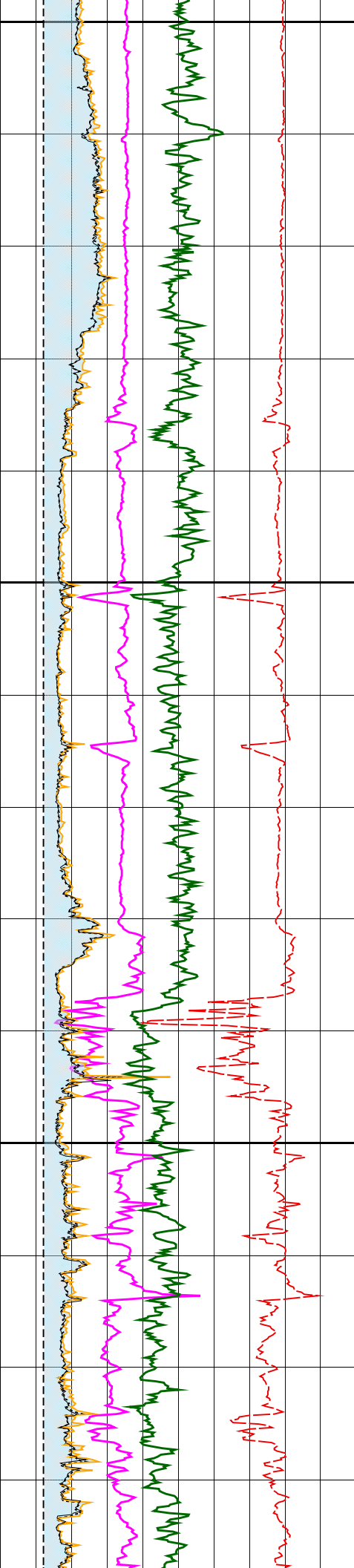


MD  
1 : 500  
m



2500

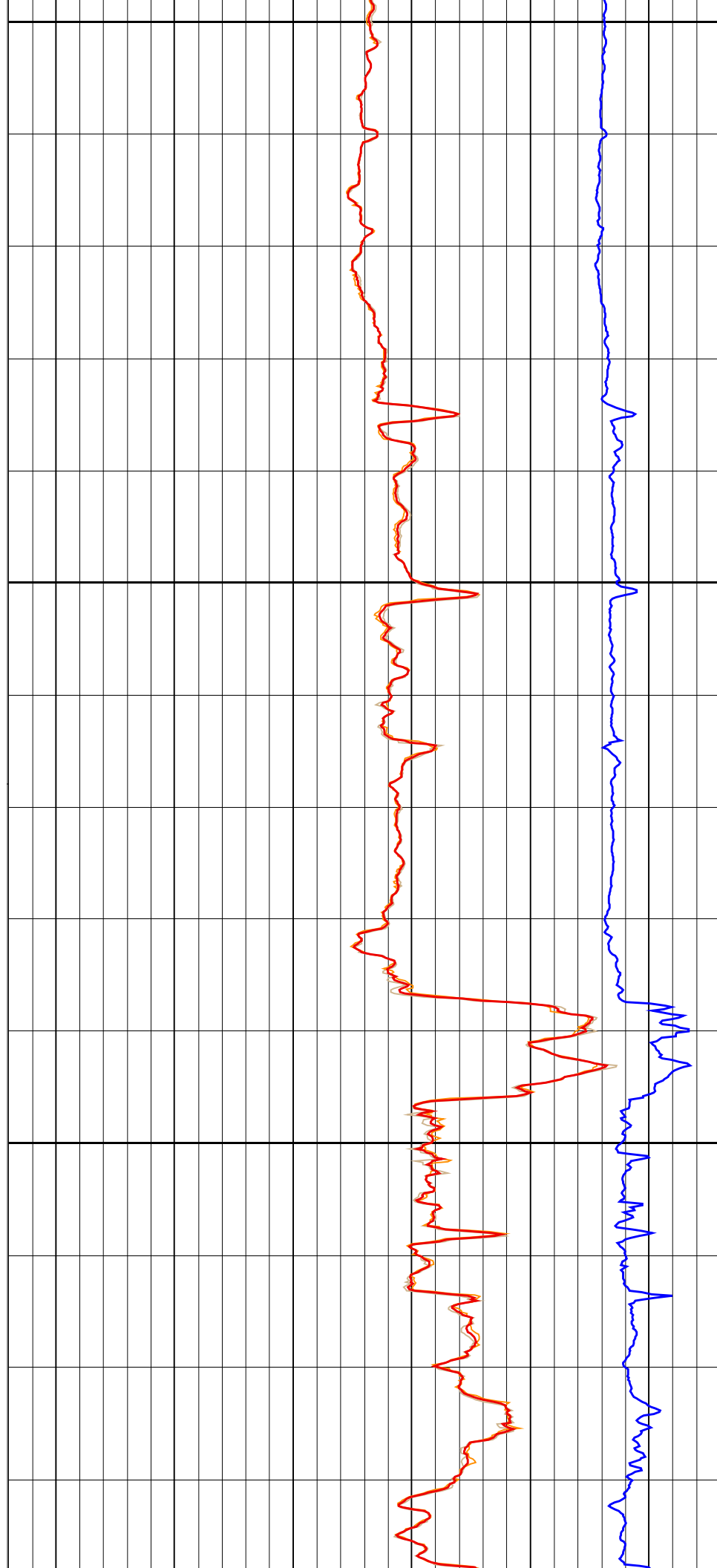


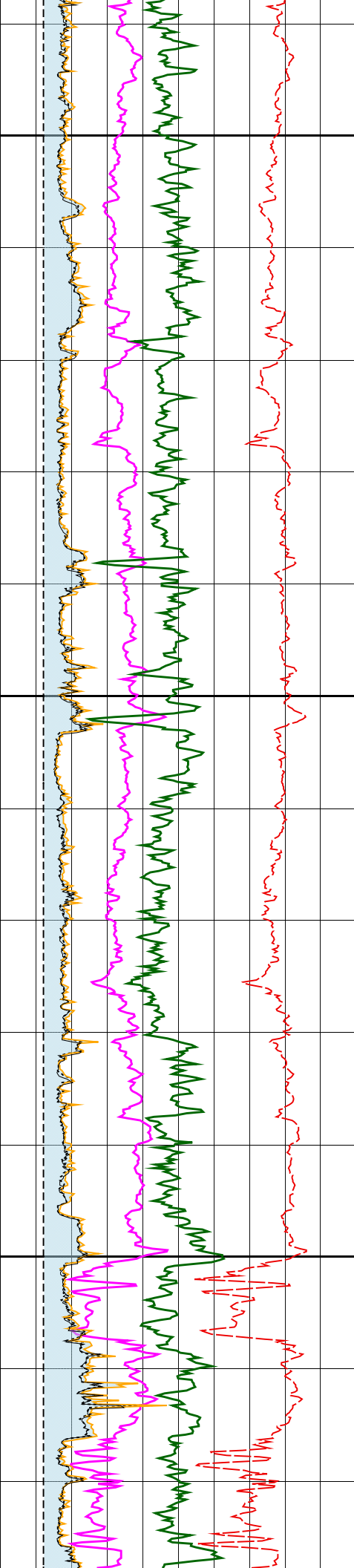


2550

2600

2650

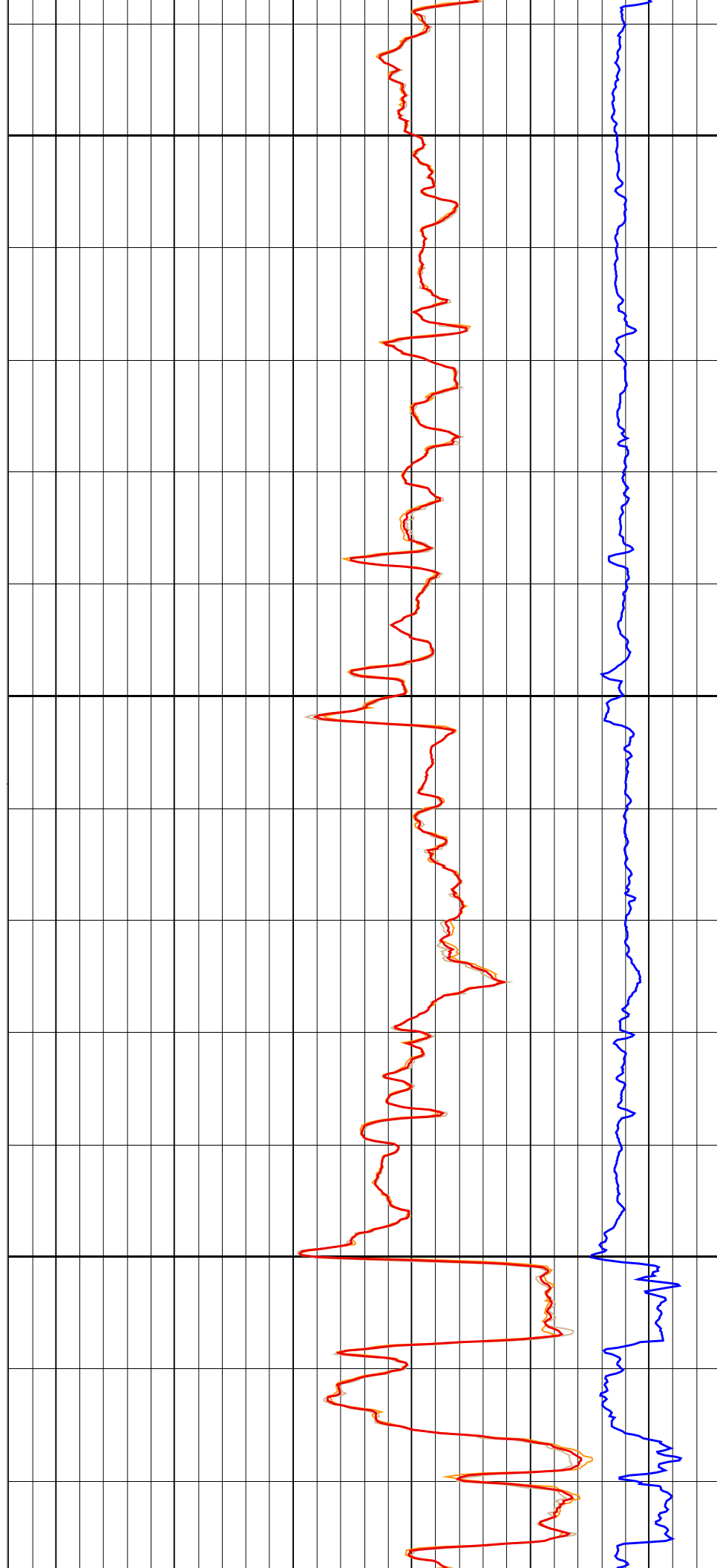


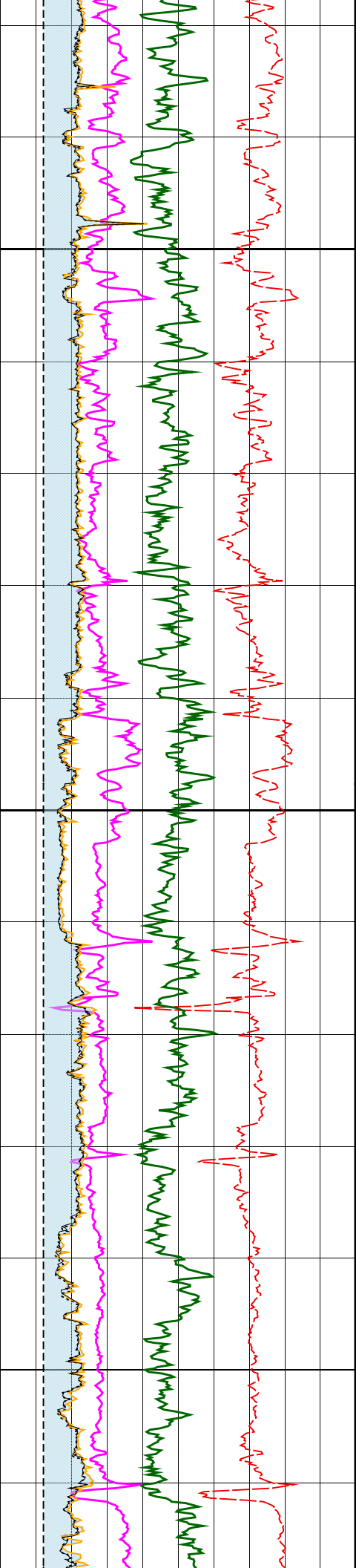


2700

2750

2800

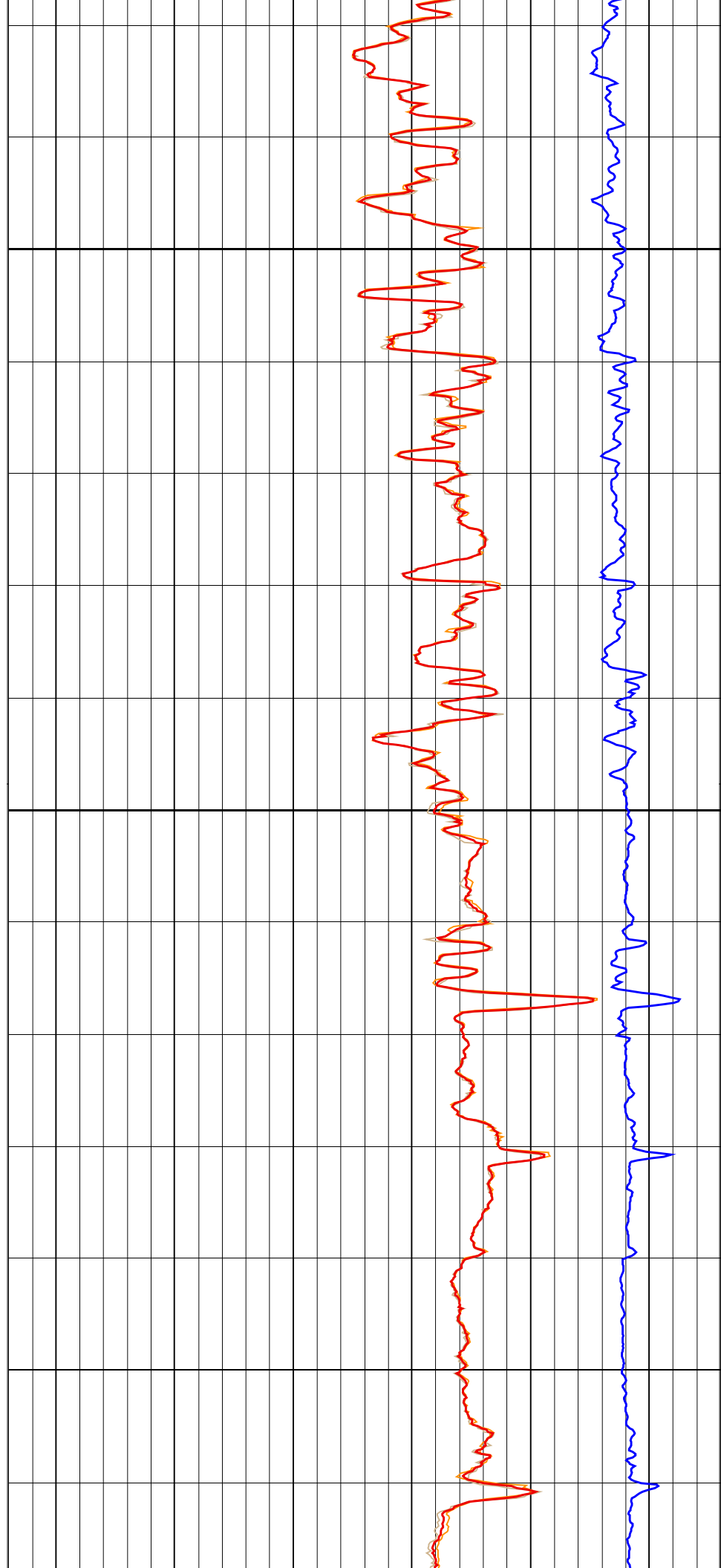


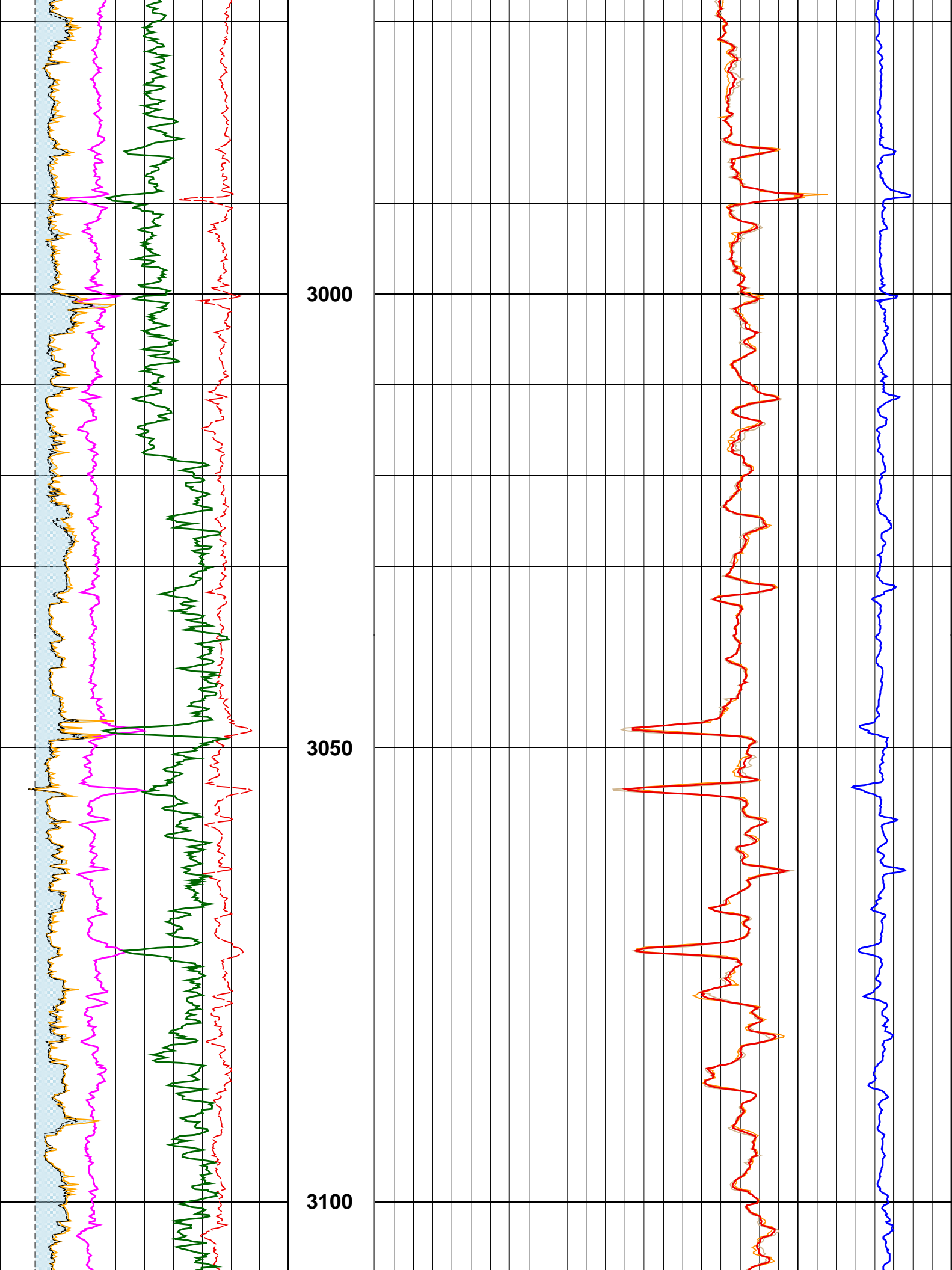


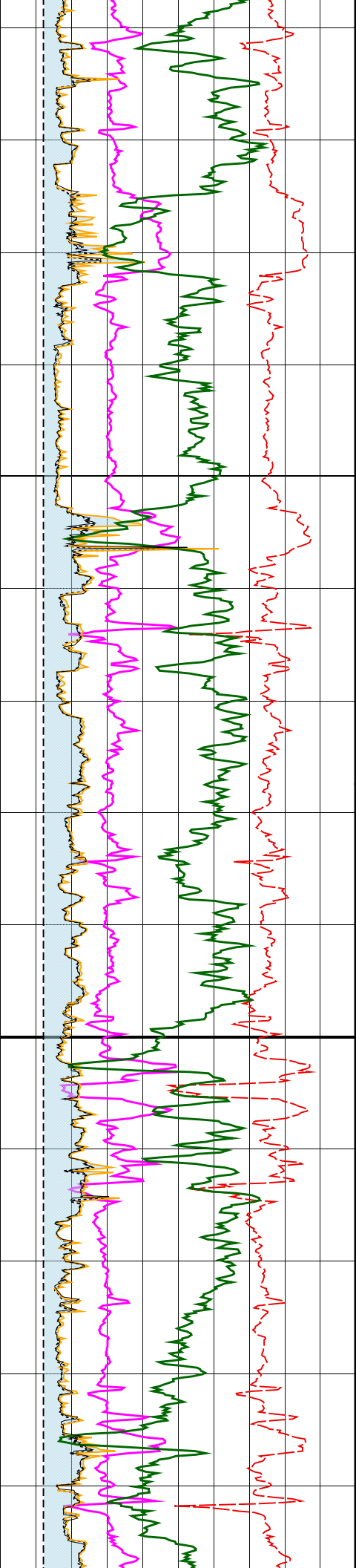
2850

2900

2950

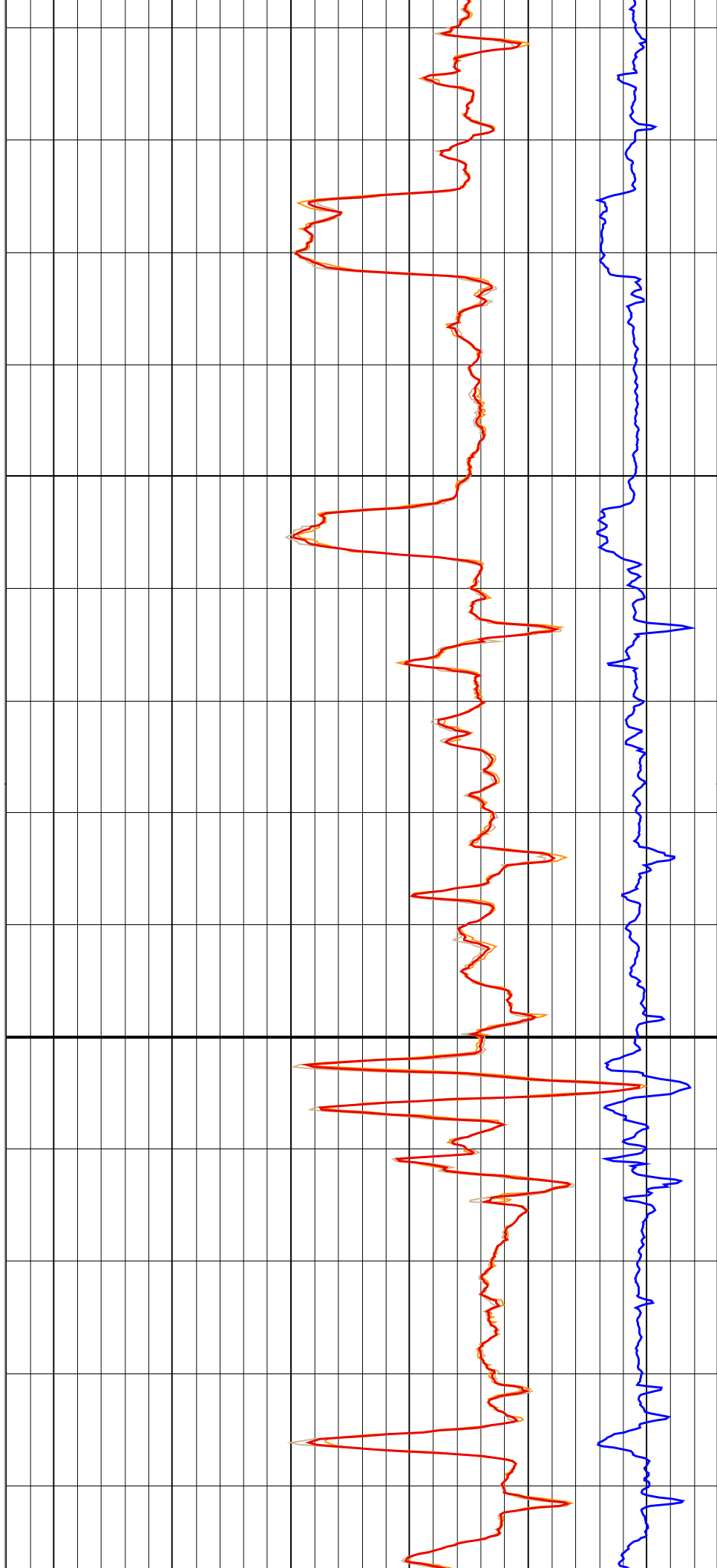


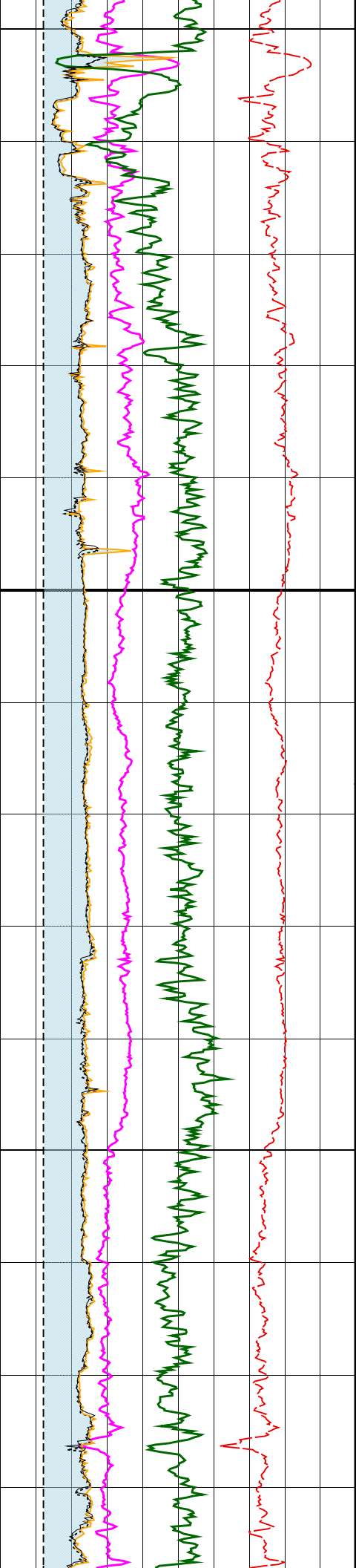




3150

3200

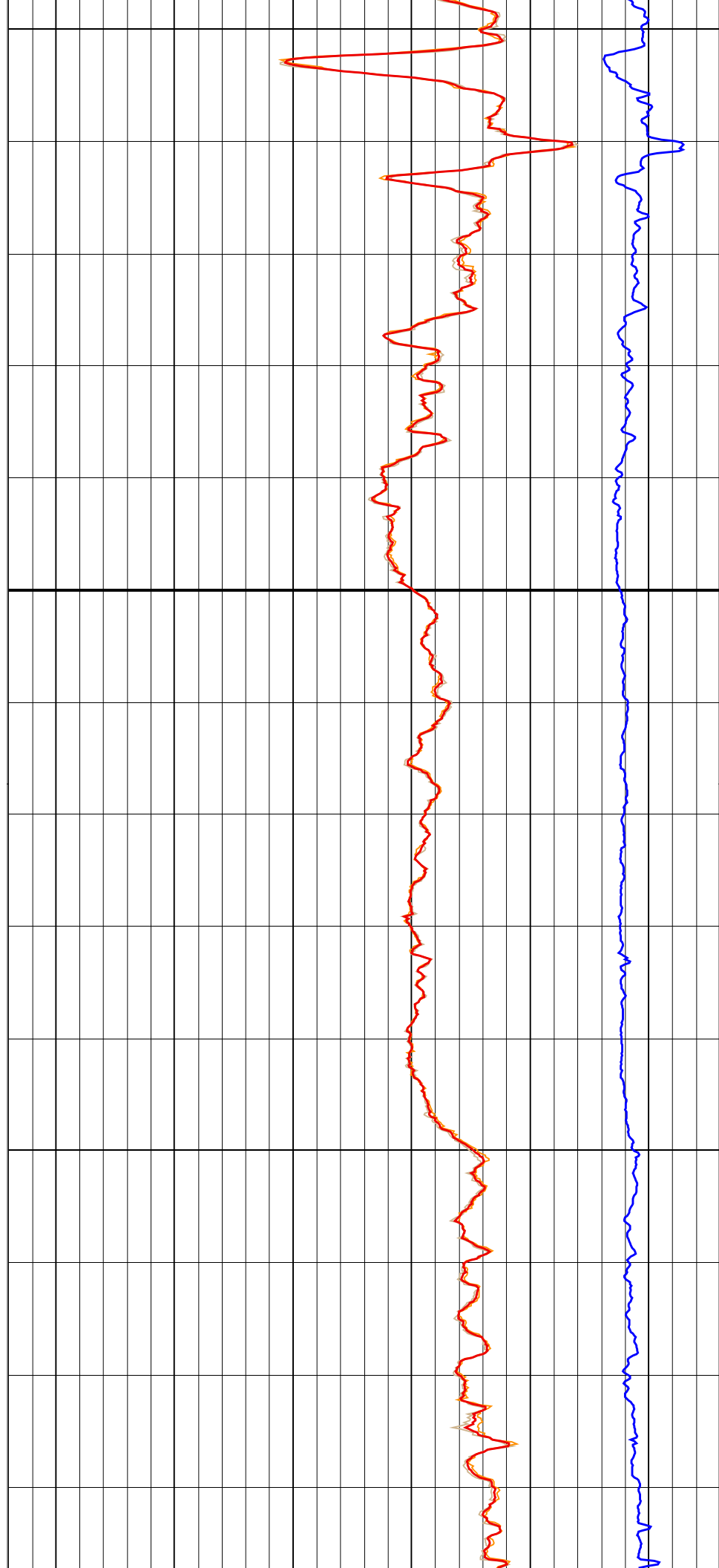




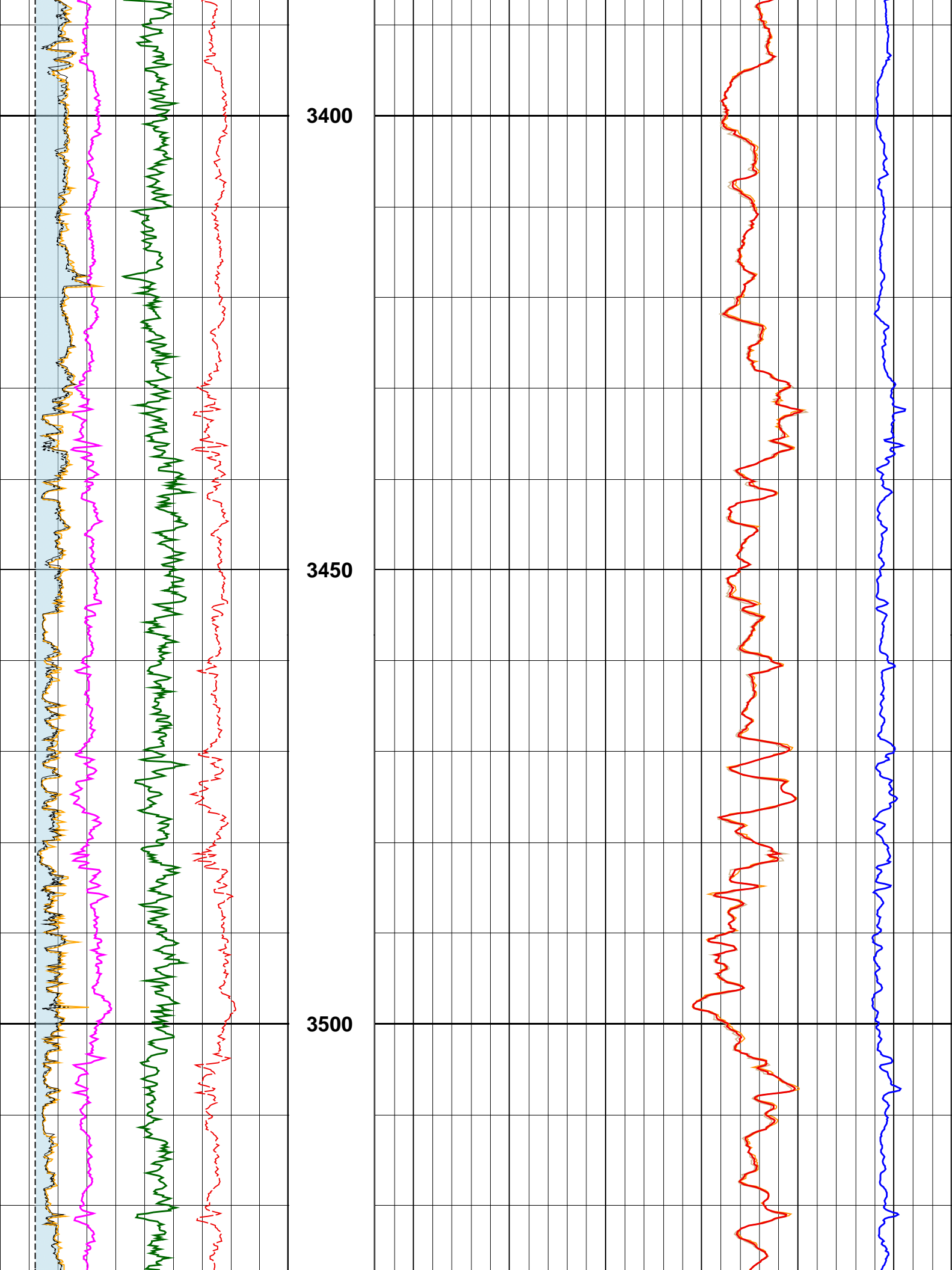
3250

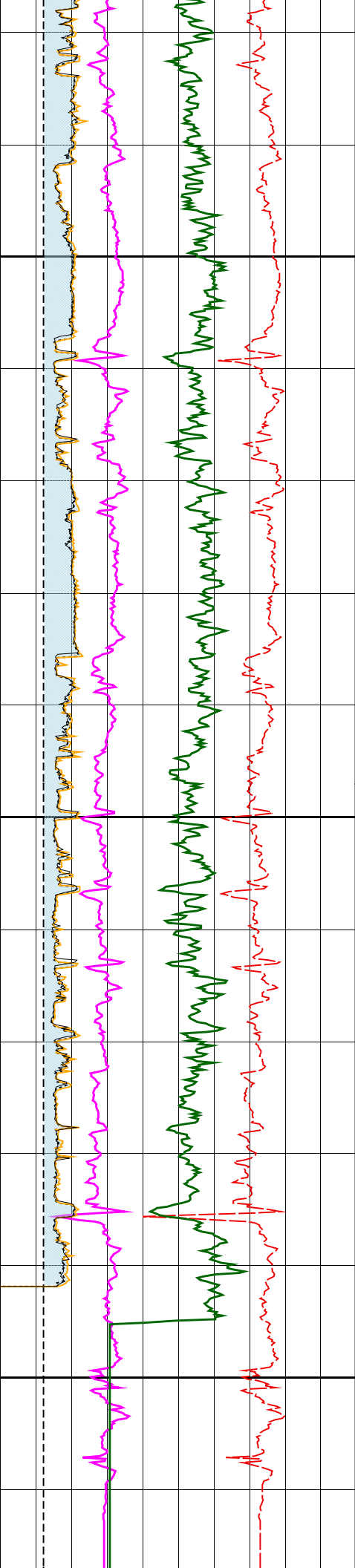
3300

3350





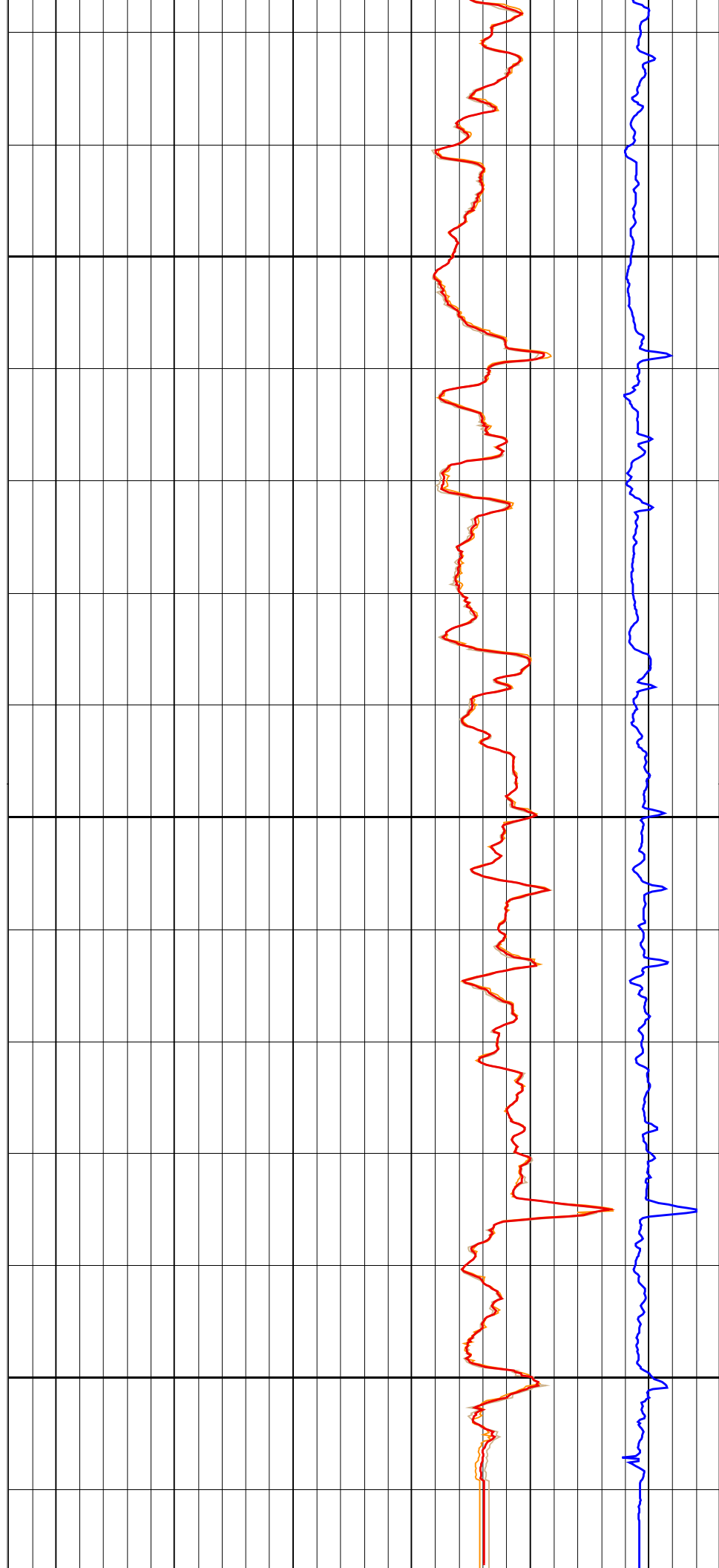




3550

3600

3650



--- Finalization Result ---				
1	MPS Compressional	Receiver	Absent levels=	0
1	MPS Compressional	Transmitter	Absent levels=	0
1	MPS Shear	Receiver	Absent levels=	7829
1	MPS Shear	Transmitter	Absent levels=	7829
1	UDP_IN Shear	Receiver	Absent levels=	0
1	LDP_IN Shear	Receiver	Absent levels=	0
1	MPS Compressional	DDBHC	Absent levels=	0 *Selected*
1	MPS Shear	DDBHC	Absent levels=	7829
1	UDP_IN Shear	Not-DDBHC (Receiver)	Absent levels=	0
1	LDP_IN Shear	Not-DDBHC (Receiver)	Absent levels=	0 *Selected*

HDAR.WELLEDIT HDAR@TLD_M		MD 1 : 500 m	Compressional Delta-T (DTCO)	
10	( in )		640	( us/ft )
Gamma Ray			Shear Delta-T (DTSM)	
0	( gAPI )		640	( us/ft )
Caliper2			DT2R@BestDT-3;4 .UDP_IN .SWP .BDT .EDT [A46518]	
10	( in )		640	( us/ft )
Caliper1			DT1R@BestDT-3;4 .LDP_IN .SWP .BDT .EDT [A47064]	
10	( in )		640	( us/ft )
Bit Size				
10	( in )			
Wash Out				
Vp/Vs Ratio (VPVS)				
1	( )			
Poisson's Ratio (PR)				
0	( )			

Company:	JAMSTEC			
Well:	C0020A			
FIELD:	C0020			
County:				
Pref.	Aomori			
Date Logged:	9-Sep-2012	Date Processed:		
Well Location:	Shimokita-oki X= 600698.8 M			
Elevations:	KB: 28.5m	DF: 28.5m	GL: -118m	
API Number:	Job Number:			