



GEOFRAME
PROCESSED
INTERPRETATION

BestDT*
Final Result

Custom Sonic Processing – Cased

*A Mark of Schlumberger

Using the following logs:

FMI-DSI-EMS-PPC

COMPANY: JAMSTEC

WELL: C0020A

FIELD: C0020

County:

Pref. Aomori

COUNTRY: Japan

Date Logged: 9-Sep-2012

Date Processed:

10-Sep-2012

Well Location: Shimokita-oki

X= 600698.8 M

Elevations: KB: 28.5m

DF: 28.5m

GL: -1180m

API Number:

Job Number:

FOLD HERE The well name, location and borehole reference data were furnished by the customer.

Any interpretation, research, analysis, data, results, estimates, or recommendation furnished with the services or otherwise communicated by Schlumberger to the customer at any time in connection with the services are opinions based on inferences from measurements, empirical relationships, and/or assumptions; which, inferences, empirical relationships and/or assumptions are not infallible and with respect to which professionals in the industry may differ. Accordingly, Schlumberger cannot and does not warrant the accuracy, correctness, or completeness of any such interpretation, research, analysis, data, results, estimates, or recommendation. The customer acknowledges that it is accepting the services "as is," that Schlumberger makes no representation or warranty, express or implied, of any kind or description in respect thereto, and that such services are delivered with the explicit understanding and agreement that any action taken based on the services received shall be at its own risk and responsibility, and no claim shall be made against Schlumberger as a consequence thereof.

@ 2010 Schlumberger. All rights reserved.

Field Recording:	Location: JPOP	Software Version: 19C1-222	Engineer: Liu Jie/Montague/Kang Yc
------------------	----------------	----------------------------	------------------------------------

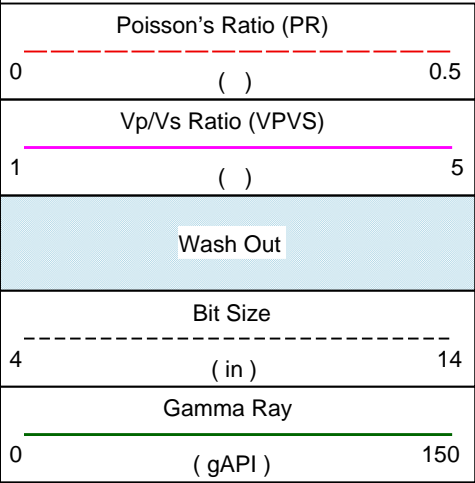
Office Recording:	ICS Center:	Baseline: RHEL5.4 GF4.5 DC6	Log Analyst: Tadahiro NAGANO
-------------------	-------------	-----------------------------	------------------------------

Mud and Borehole Measurements:

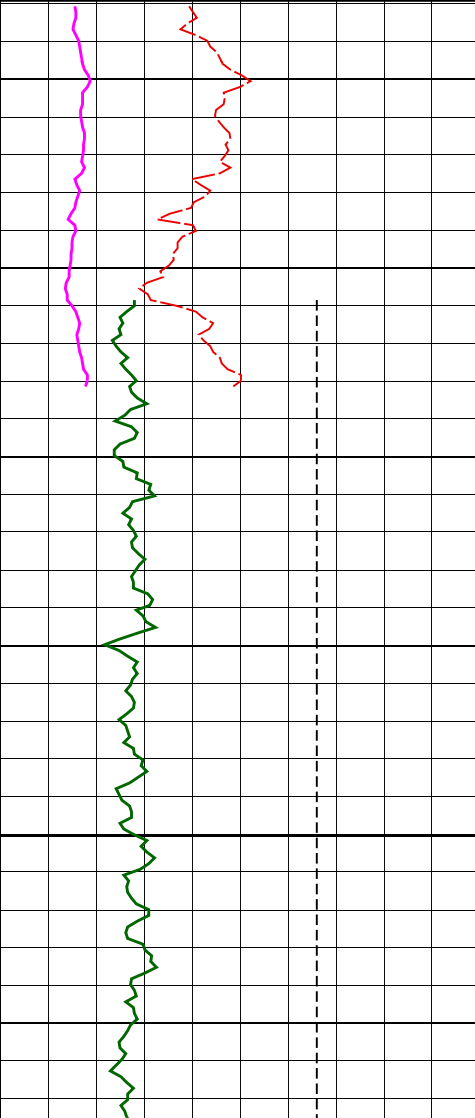
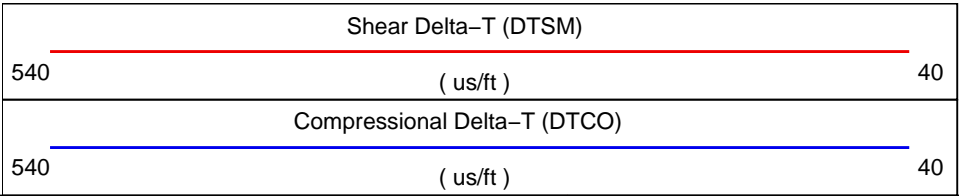
Rm @ Measured Temperature: 0.082ohm.m @ 24.6degC	BHT: 47.8degC	Bitsize: 10.625in
Rmf @ Measured Temperature: 0.0728ohm.m @ 23.3degC	Type Fluid in Hole:	KNPPmud
Rmc @ Measured Temperature: 0.0949ohm.m @ 25.6degC	Mud Density: 1.11g/cm3	

Remarks:

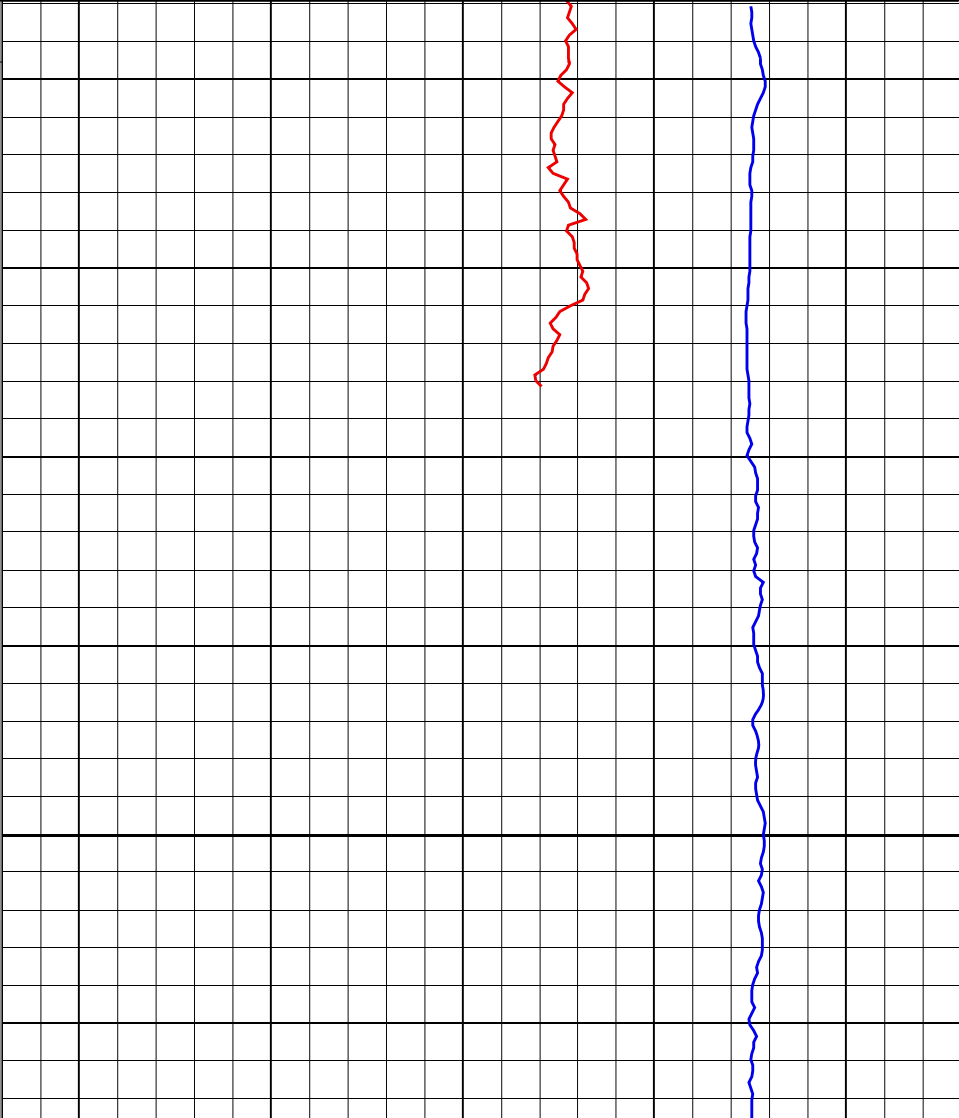
Dipole share signals were not be detectable.
MD based on mBRT.

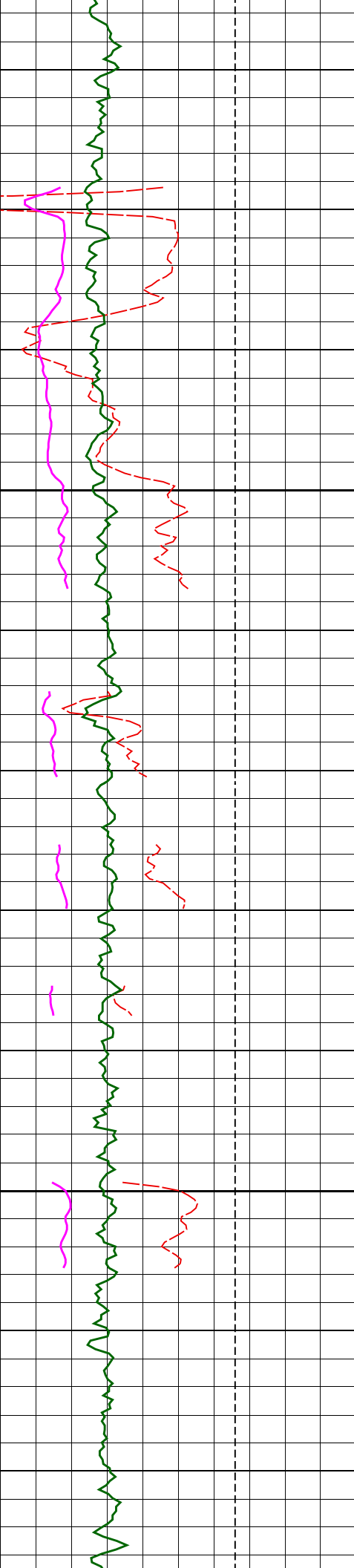


MD
1 : 200
m



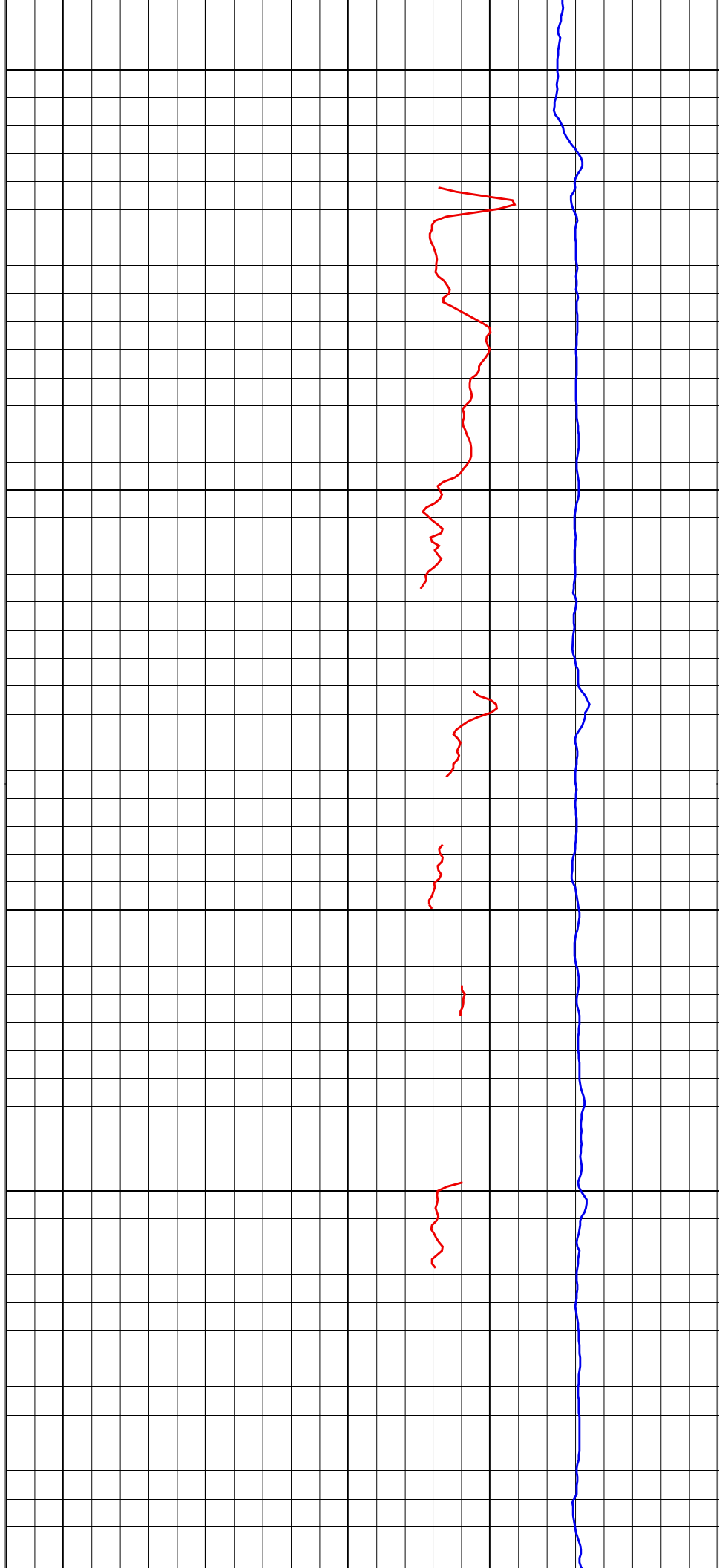
2300

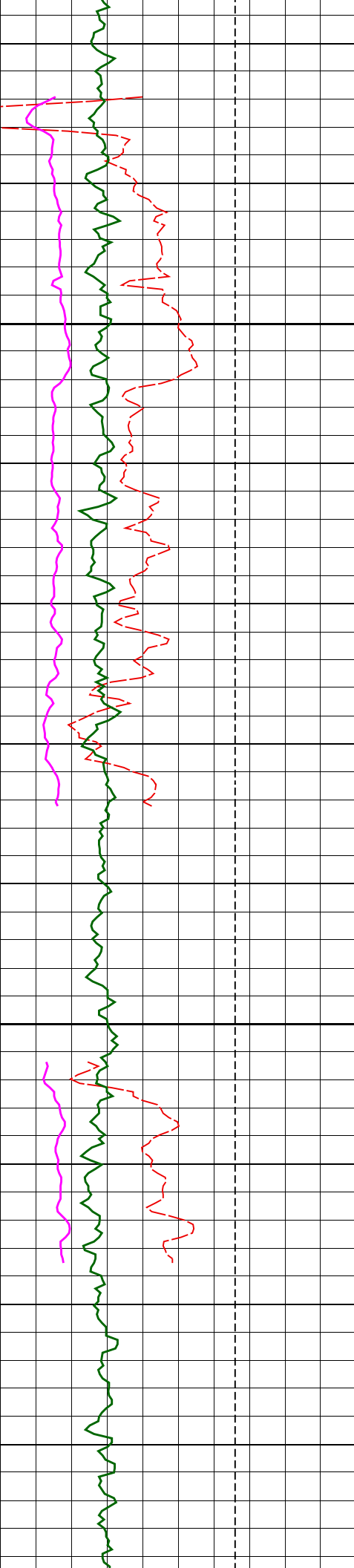




2325

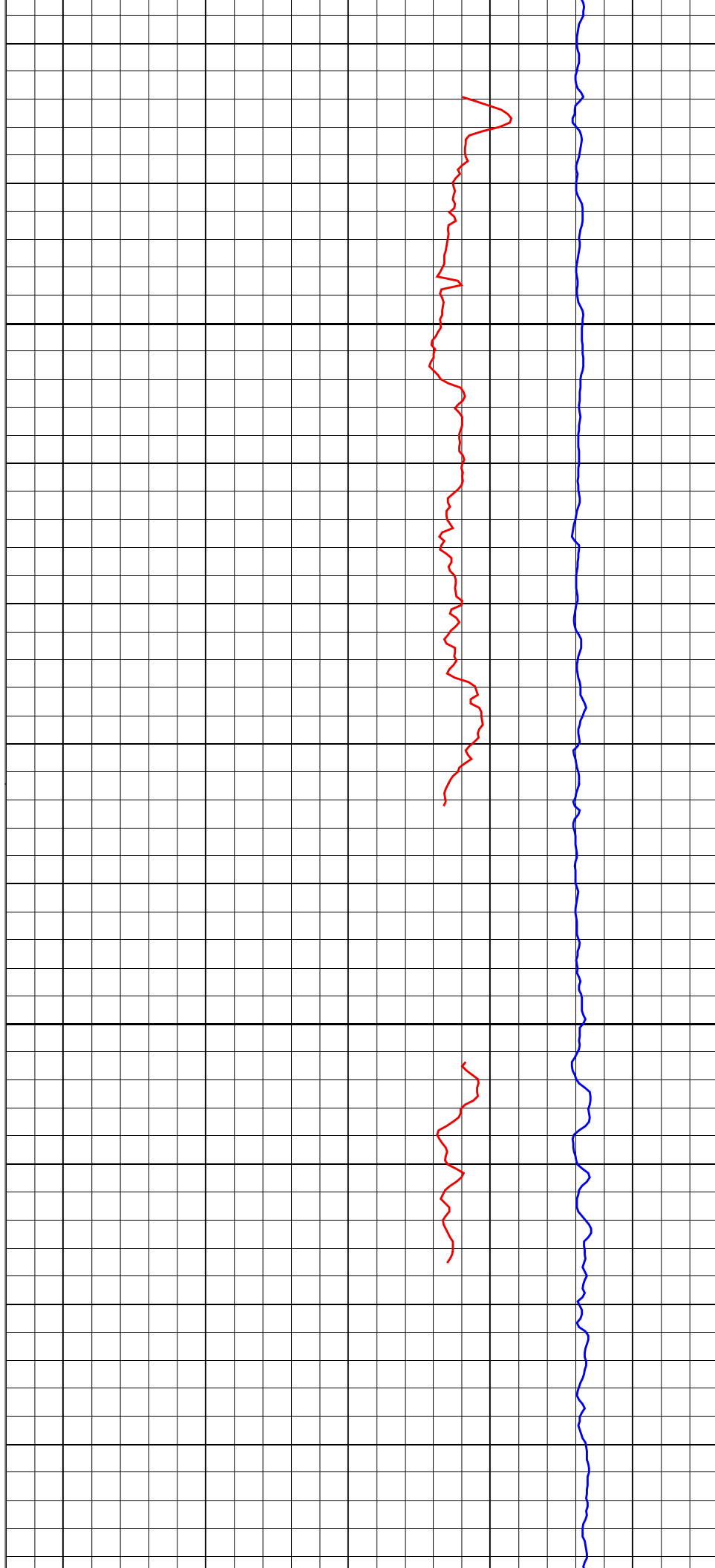
2350

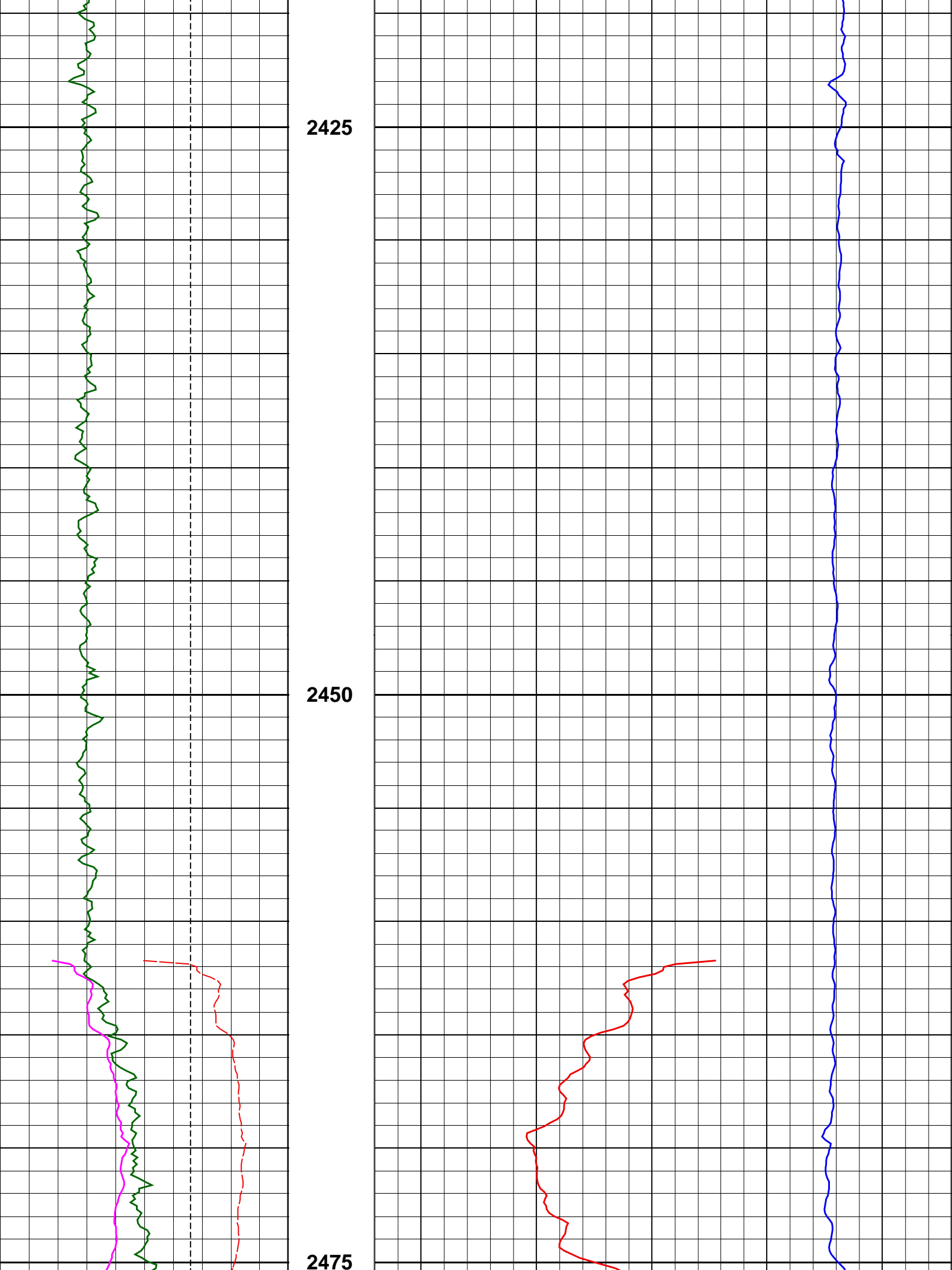


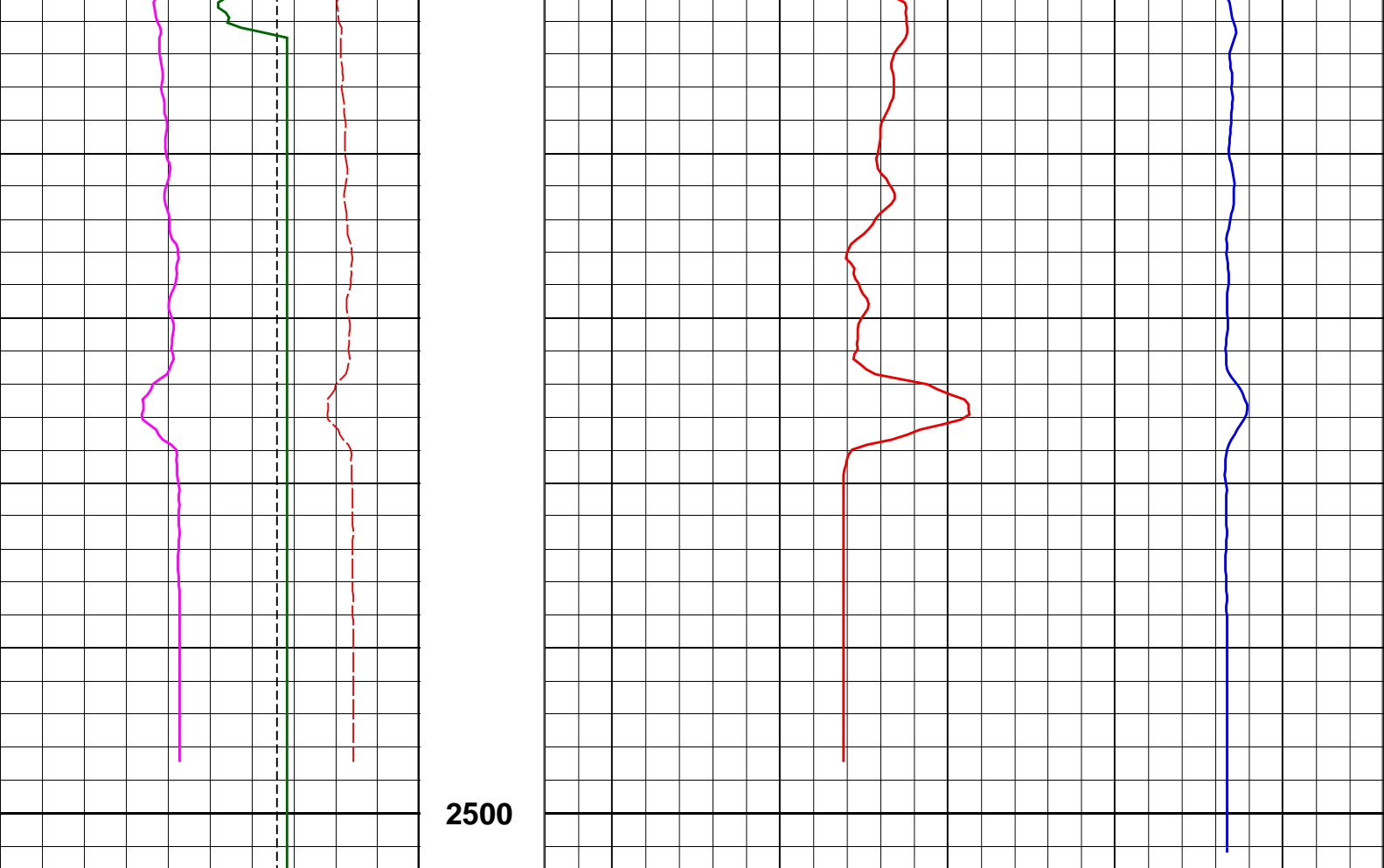


2375

2400

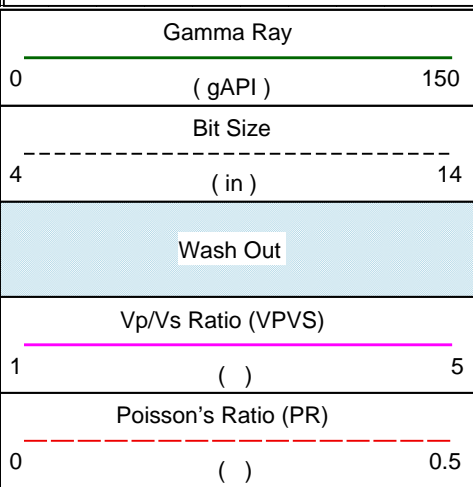




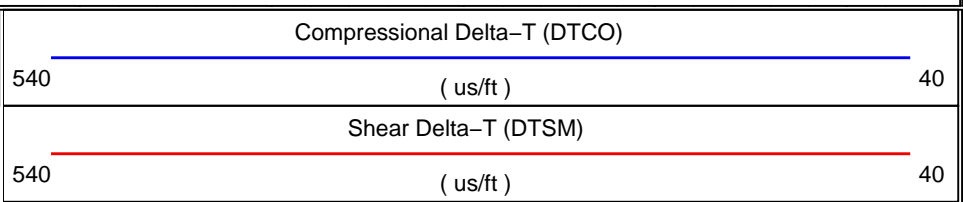


--- Finalization Result ---

1 MPS Very Slow P	Receiver	Absent levels=	0
1 MPS Very Slow P	Transmitter	Absent levels=	1
1 UDP Shear	Receiver	Absent levels=	1015
1 LDP Shear	Receiver	Absent levels=	775
1 MPS Very Slow P	DDBHC	Absent levels=	0 *Selected*
1 UDP Shear	Not-DDBHC (Receiver)	Absent levels=	1015
1 LDP Shear	Not-DDBHC (Receiver)	Absent levels=	775 *Selected*



MD
1 : 200
m



Company: JAMSTEC

Well: C0020A

FIELD: C0020

County:

Pref. Aomori

Date Logged: 9-Sep-2012

Date Processed: 10-Sep-2012

Well Location: Shimokita-oki
X= 600698.8 M

Elevations: KB: 28.5m

DF: 28.5m

GL: -1180m

API Number:

Job Number:

