

BestDT* QC Plot

C0012H

Interval: 4225m – 4109m (1:200)

COMPANY: JAMSTEC

WELL: C0012H

FIELD: Nankai Trough – Kumano Basin

Prefecture: Wakayama

COUNTRY: Japan

Date Processed: 07-Dec-2012 Date Logged: 04-Dec-2012

Job Number: C31292 Processed at: DS Beijing

Well Location: Philippine Sea

Latitude: 32° 44' 52.698" N Longitude: 136° 55' 2.106" E

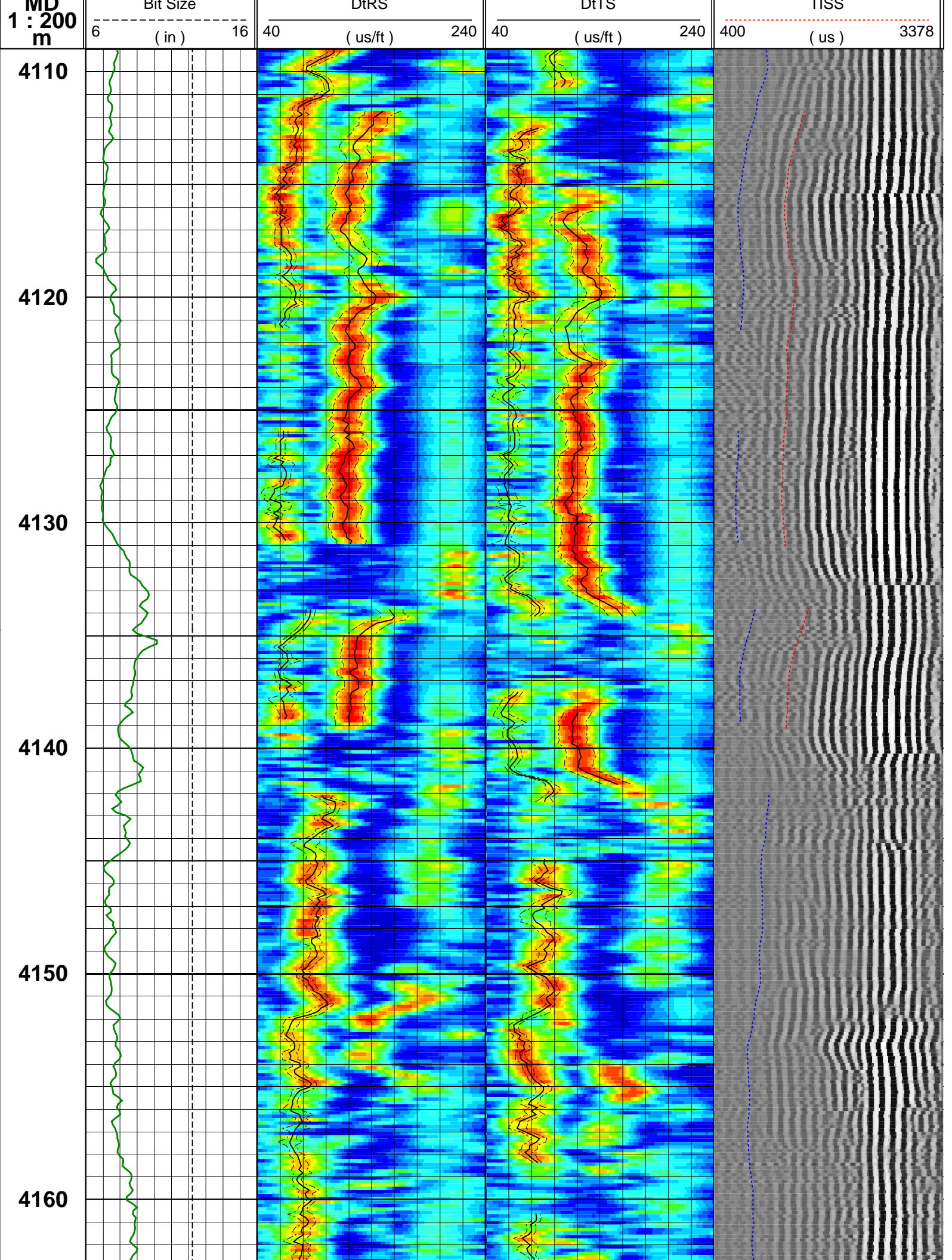
Elevations: KB: 28.5m DF: 28.5m GL: -3509.5m

FOLD HERE The well name, location and borehole reference data were furnished by the customer.

Any interpretation, research, analysis, data, results, estimates, or recommendation furnished with the services or otherwise communicated by Schlumberger to the customer at any time in connection with the services are opinions based on inferences from measurements, empirical relationships, and/or assumptions; which, inferences, empirical relationships and/or assumptions are not infallible and with respect to which professionals in the industry may differ. Accordingly, Schlumberger cannot and does not warrant the accuracy, correctness, or completeness of any such interpretation, research, analysis, data, results, estimates, or recommendation. The customer acknowledges that it is accepting the services "as is," that Schlumberger makes no representation or warranty, express or implied, of any kind or description in respect thereto, and that such services are delivered with the explicit understanding and agreement that any action taken based on the services received shall be at its own risk and responsibility, and no claim shall be made against Schlumberger as a consequence thereof.

@ 2010 Schlumberger. All rights reserved.

GR_RAB	STPrjR	STPrjT	WF VDL
0 (gAPI) 150	40 (us/ft) 240	40 (us/ft) 240	400 (us) 3378
Wash Out	40 (us/ft) 240	40 (us/ft) 240	400 (us) 3378



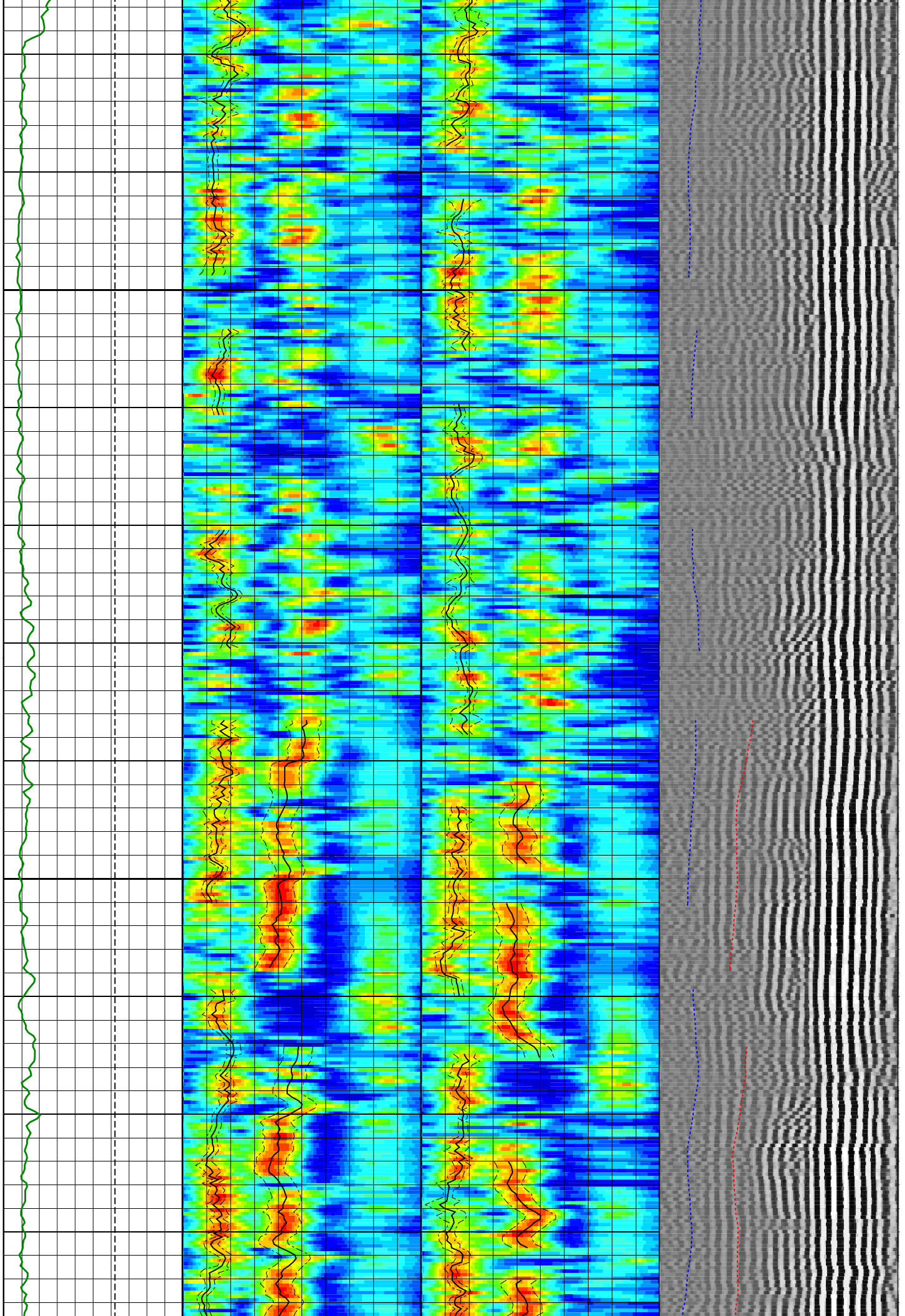
4170

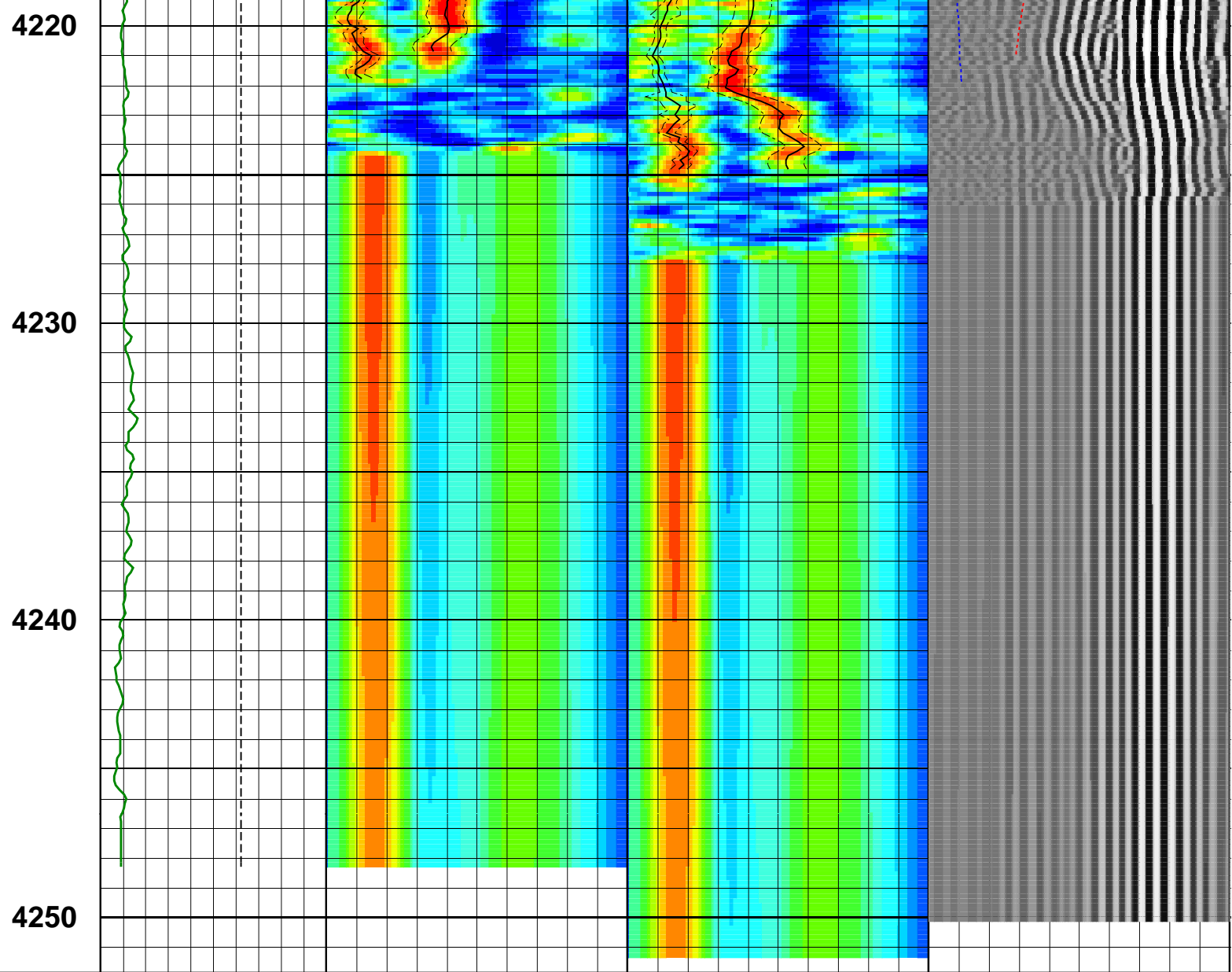
4180

4190

4200

4210





Customized Process: Start Depth (4251.36 m), Stop Depth (3500.63 m), Logging Mode (sonicVISION – MPS_WIDE)
 Noise Cut Filtering(Yes – F–K, WS 14723), Casing Cut Filtering(No)
 WF_FLG(1 1 1 1), MUD_TYPE(WBM), STCAL(Full Array), ENE_THRE_FLG(NO)
 TRSPAC(3.05714), RRSAPAC(0 0.2032 0.4064 0.6096)
 Mud Slowness (no input)
 Hole Diameter (BS@MaxWell_1Dlis;2 .REAL–TIME (3500.32 – 4248.3 m))
 Zoning Guide (DTCO@MaxWell_1Dlis;1 .RECORDED–MODE (3500.32 – 4248.3 m))
 Tracking Guide (SLOW@BestDT–3;5 .DTRP .CO .MPS_WIDE .ISONIC .SWP .BDT (4248.3 – 3500.63 m))

--- Zone Top Depth (0), Zone Name (Upper) ---
 SFTY(Slow), BHS(OPEN), CSIZ(12.5), HDM(Fix*), HD(12.25), DTMUD(200)
 TWI(238.281*), SLL(40.4227*), SUL(240.409*), SST(2.12751*), TLL(677.995*), TUL(2504.82*), TST(39.7135*)
 SBW(1200*), SBO(180*), SWD(20), TWD(1742), SEM(0.5*), FLENG(49*), FLOW(5000*), FHIGH(8000*)
 TKO_MODEL_ORDER(2), TKO_TOL(50), TKO_FLOW(0), TKO_FHIGH(12000)
 --- Zone Top Depth (4068.5), Zone Name (Lower) ---
 SFTY(Intermediate), BHS(OPEN), CSIZ(12.5), HDM(Fix*), HD(12.25), DTMUD(200)
 TWI(238.281*), SLL(40.4227*), SUL(240.409*), SST(2.12751*), TLL(400), TUL(2385.68*), TST(39.7135*)
 SBW(1200*), SBO(180*), SWD(20), TWD(1742), SEM(0.5*), FLENG(49*), FLOW(5000*), FHIGH(9000*)
 TKO_MODEL_ORDER(2), TKO_TOL(50), TKO_FLOW(0), TKO_FHIGH(12000)

MD 1 : 200	Bit Size -----	DiRS _____	DiTS _____	TISS -----
----------------------	-------------------	---------------	---------------	---------------

m	6	(in)	16	40	(us/ft)	240	40	(us/ft)	240	400	(us)	3378
	Wash Out			DtRC			DtTC			TICS		
				40	(us/ft)	240	40	(us/ft)	240	400	(us)	3378
	GR_RAB			STPrjR			STPrjT			WF VDL		
	0	(gAPI)	150	40	(us/ft)	240	40	(us/ft)	240	400	(us)	3378

Company:	JAMSTEC			
Well:	C0012H			
FIELD:	Nankai Trough – Kumano Basin			
County:				
Prefecture:	Wakayama			
Date Logged:	04-Dec-2012	Date Processed:	07-Dec-2012	
Well Location:	Philippine Sea X=679 623.175 m			
Elevations:	KB: 28.5m	DF: 28.5m	GL: -3509.5m	
API Number:	Job Number:			