

BestDT* QC Plot

C0012H

Interval: 4225m – 3529m (1:200)

COMPANY: JAMSTEC

WELL: C0012H

FIELD: Nankai Trough – Kumano Basin

Prefecture: Wakayama

COUNTRY: Japan

Date Processed: 07-Dec-2012 Date Logged: 04-Dec-2012

Job Number: C31292 Processed at: DS Beijing

Well Location: Philippine Sea

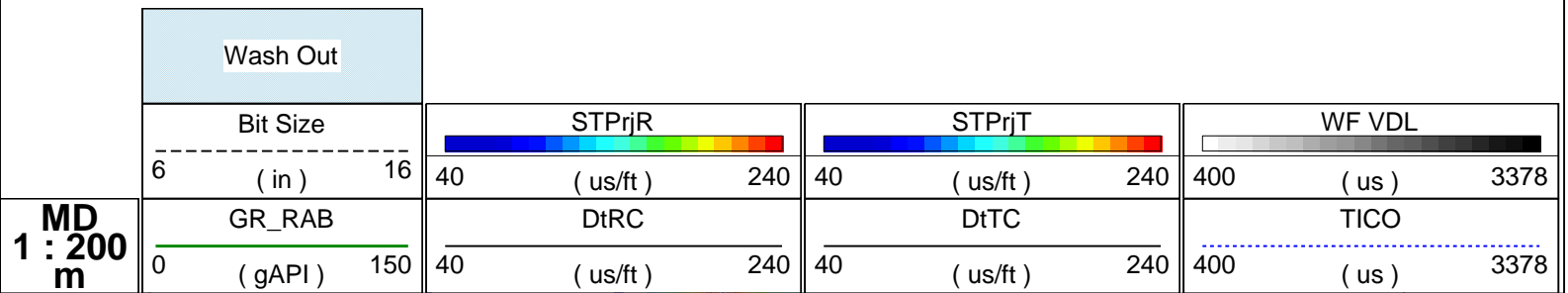
Latitude: 32°44' 52.698" N Longitude: 136°55' 2.106" E

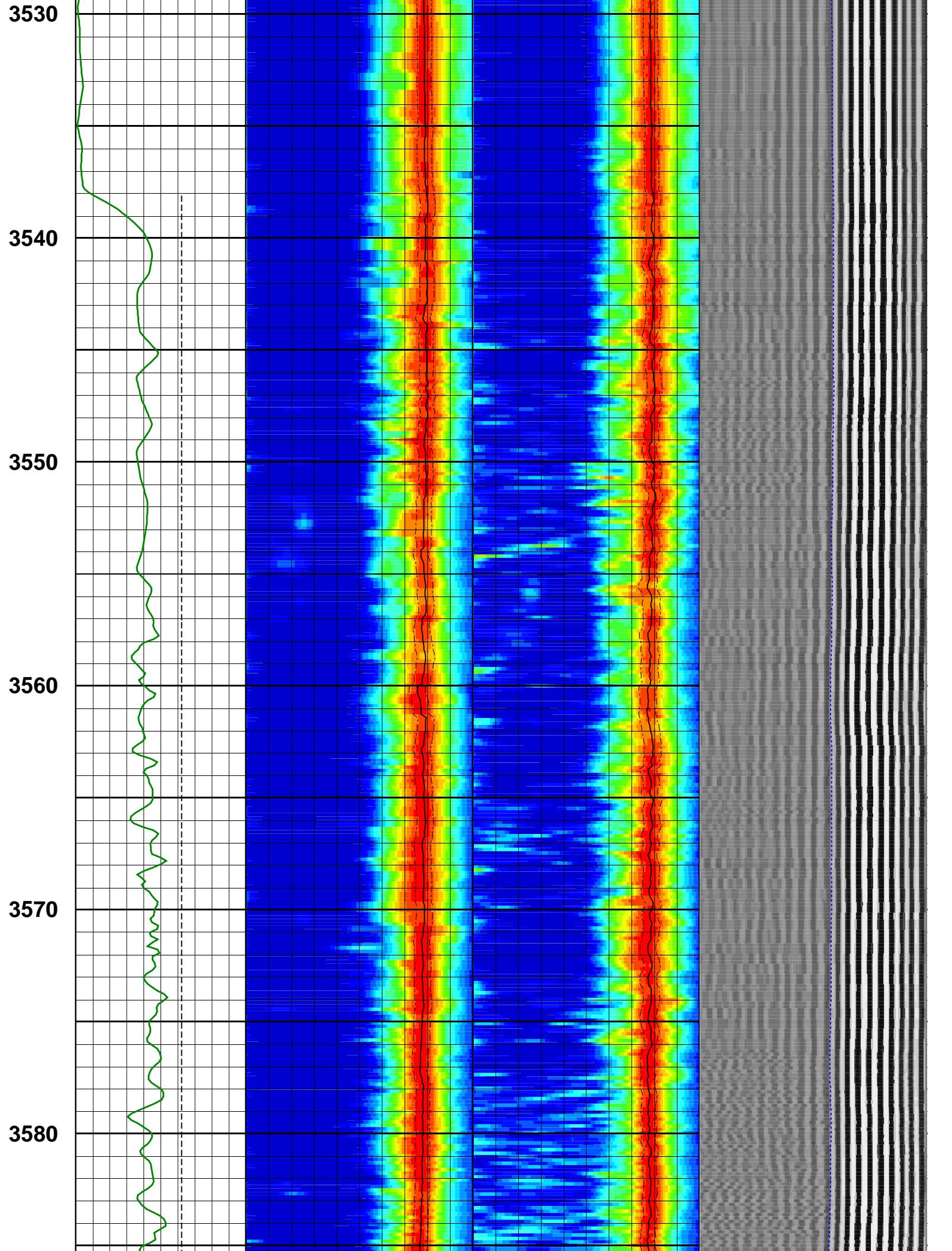
Elevations: KB: 28.5m DF: 28.5m GL: -3509.5m

FOLD HERE The well name, location and borehole reference data were furnished by the customer.

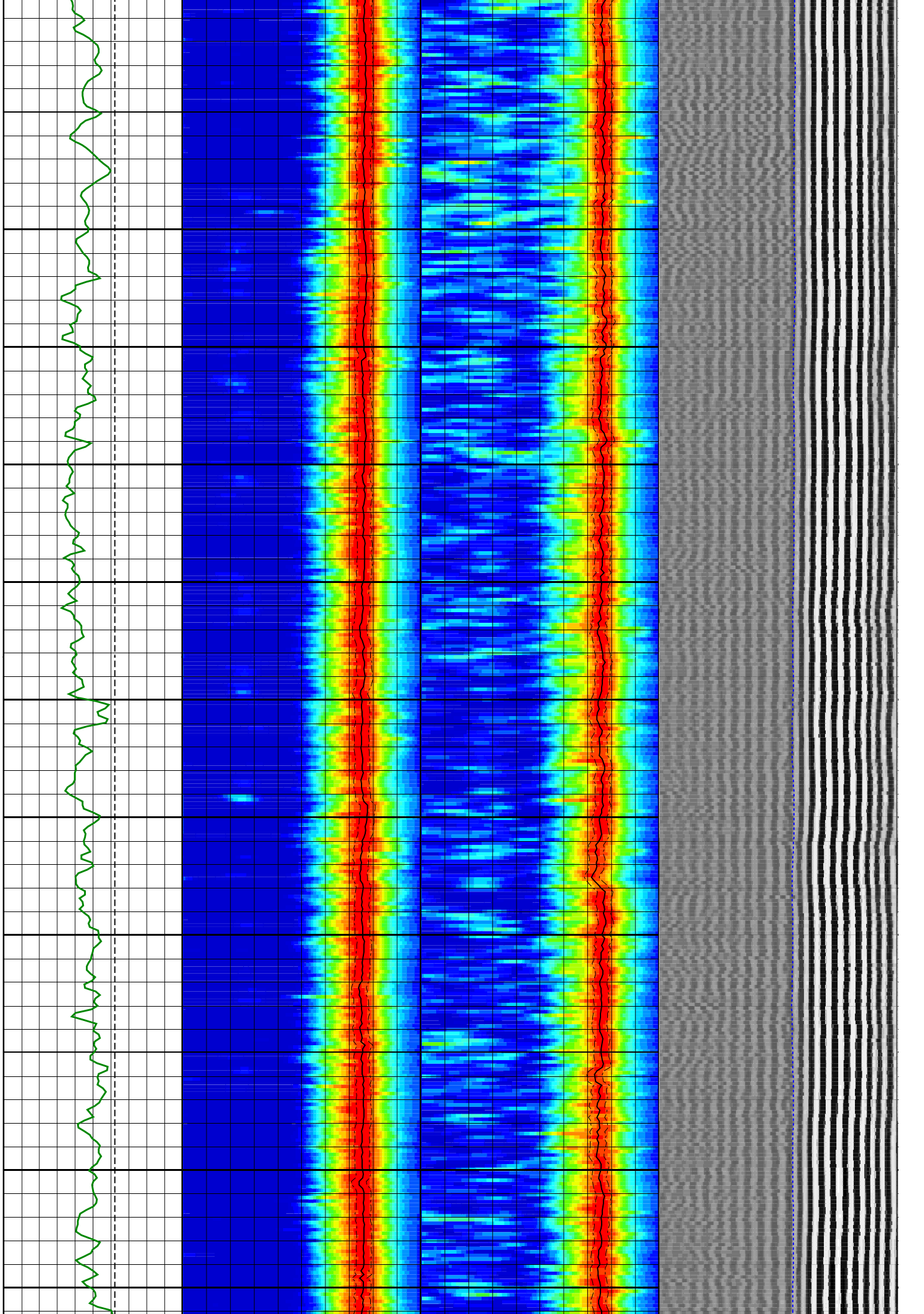
Any interpretation, research, analysis, data, results, estimates, or recommendation furnished with the services or otherwise communicated by Schlumberger to the customer at any time in connection with the services are opinions based on inferences from measurements, empirical relationships, and/or assumptions; which, inferences, empirical relationships and/or assumptions are not infallible and with respect to which professionals in the industry may differ. Accordingly, Schlumberger cannot and does not warrant the accuracy, correctness, or completeness of any such interpretation, research, analysis, data, results, estimates, or recommendation. The customer acknowledges that it is accepting the services "as is," that Schlumberger makes no representation or warranty, express or implied, of any kind or description in respect thereto, and that such services are delivered with the explicit understanding and agreement that any action taken based on the services received shall be at its own risk and responsibility, and no claim shall be made against Schlumberger as a consequence thereof.

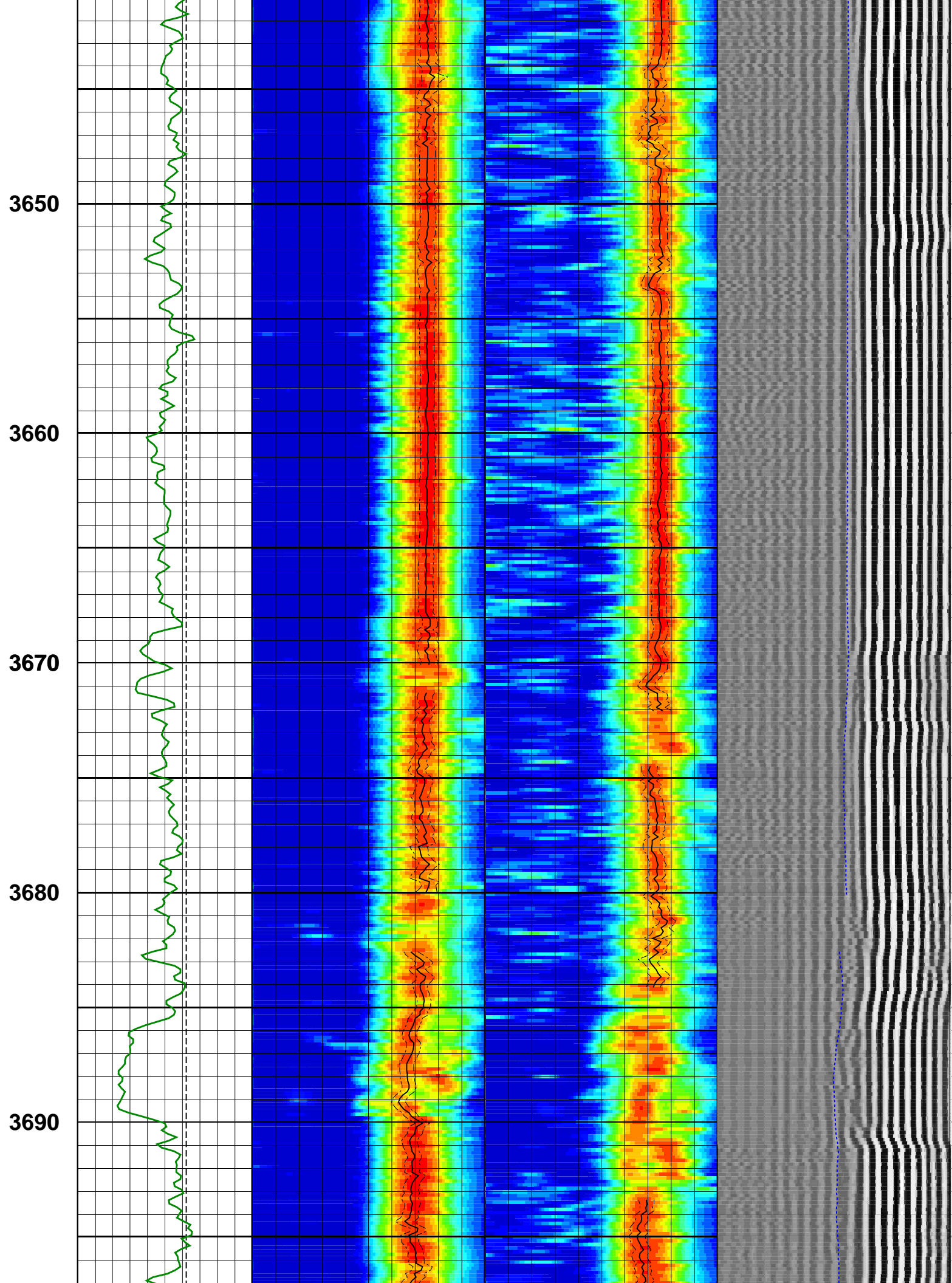
@ 2010 Schlumberger. All rights reserved.

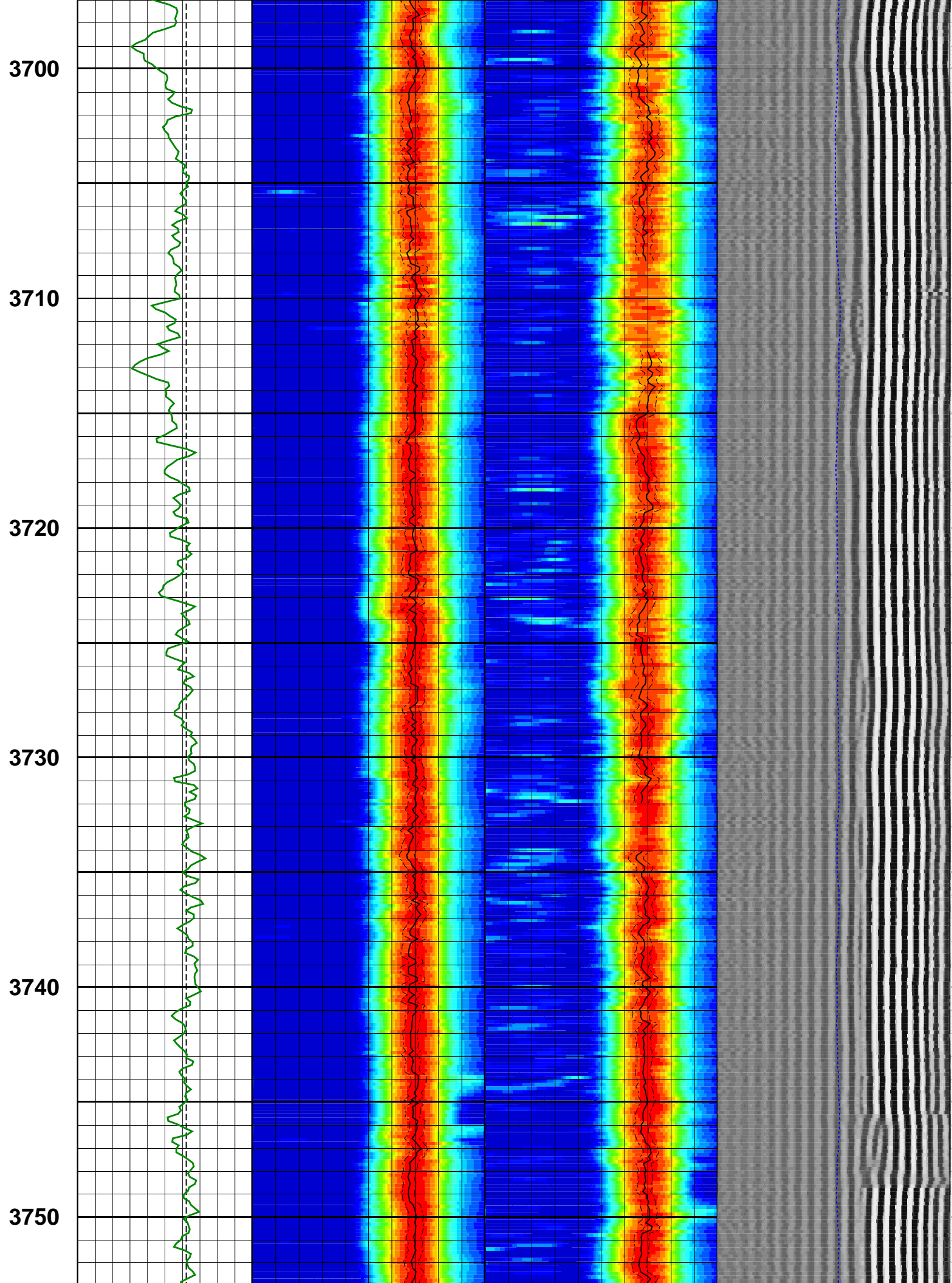




3590
3600
3610
3620
3630
3640







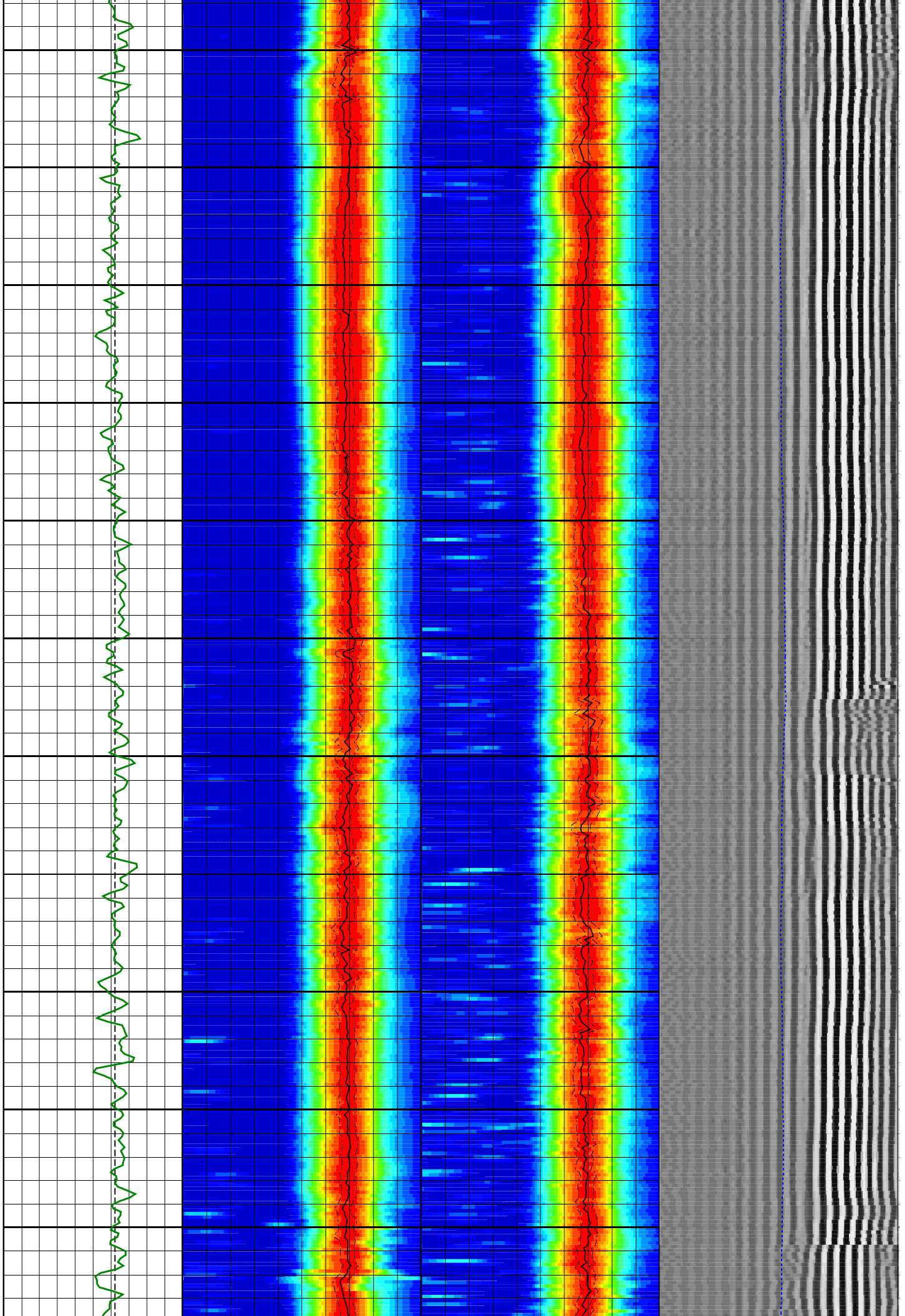
3760

3770

3780

3790

3800



3810

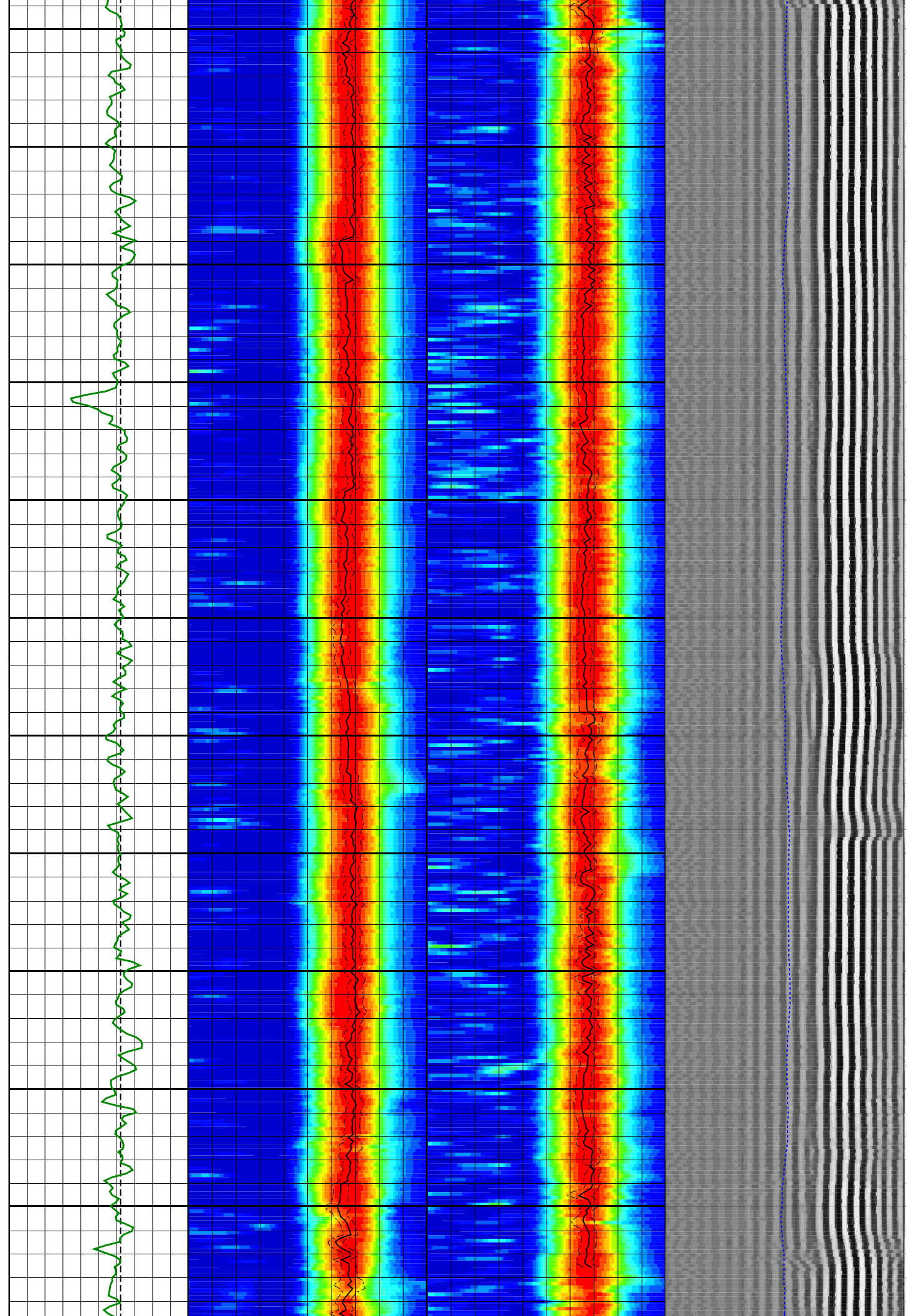
3820

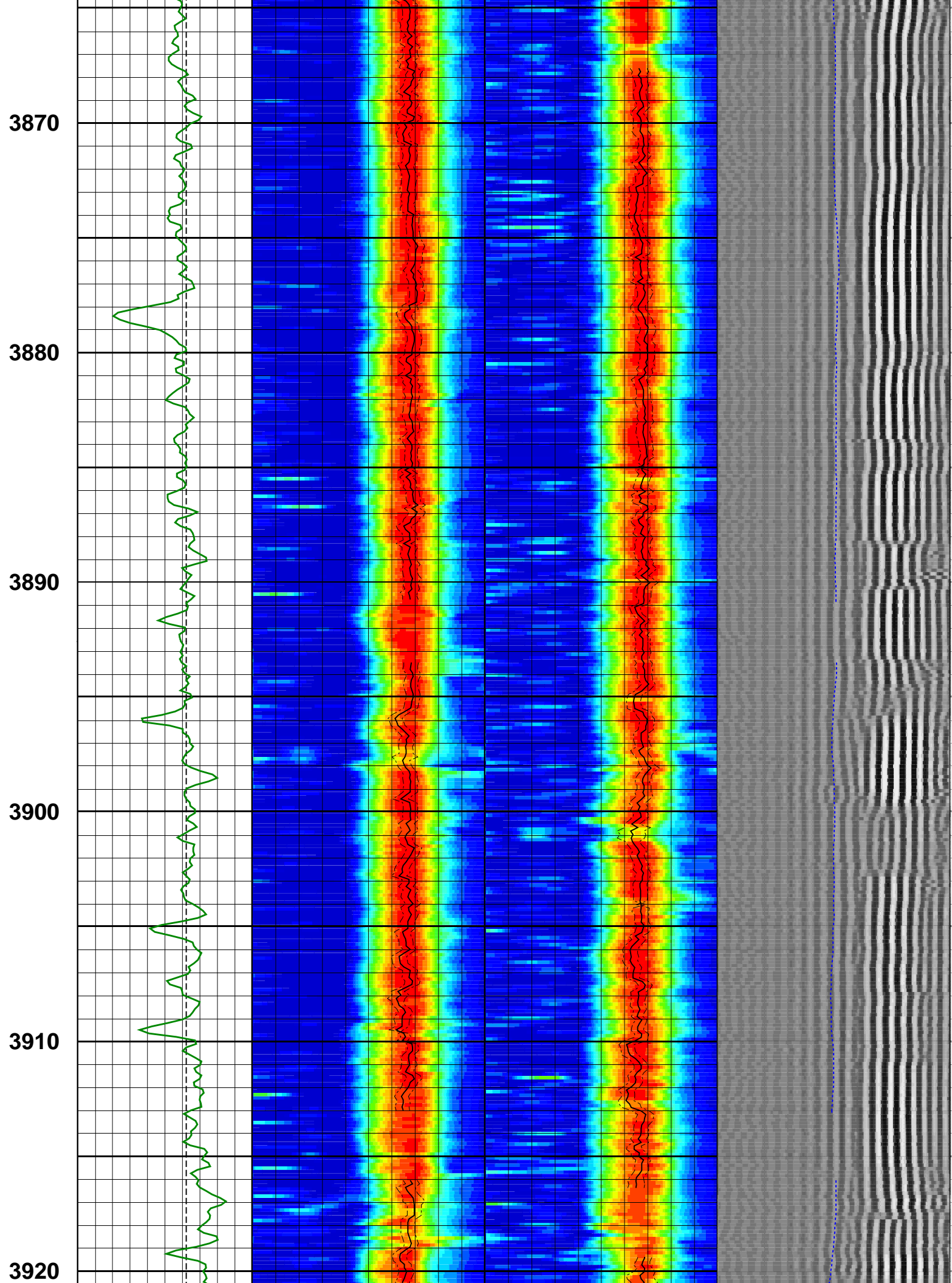
3830

3840

3850

3860





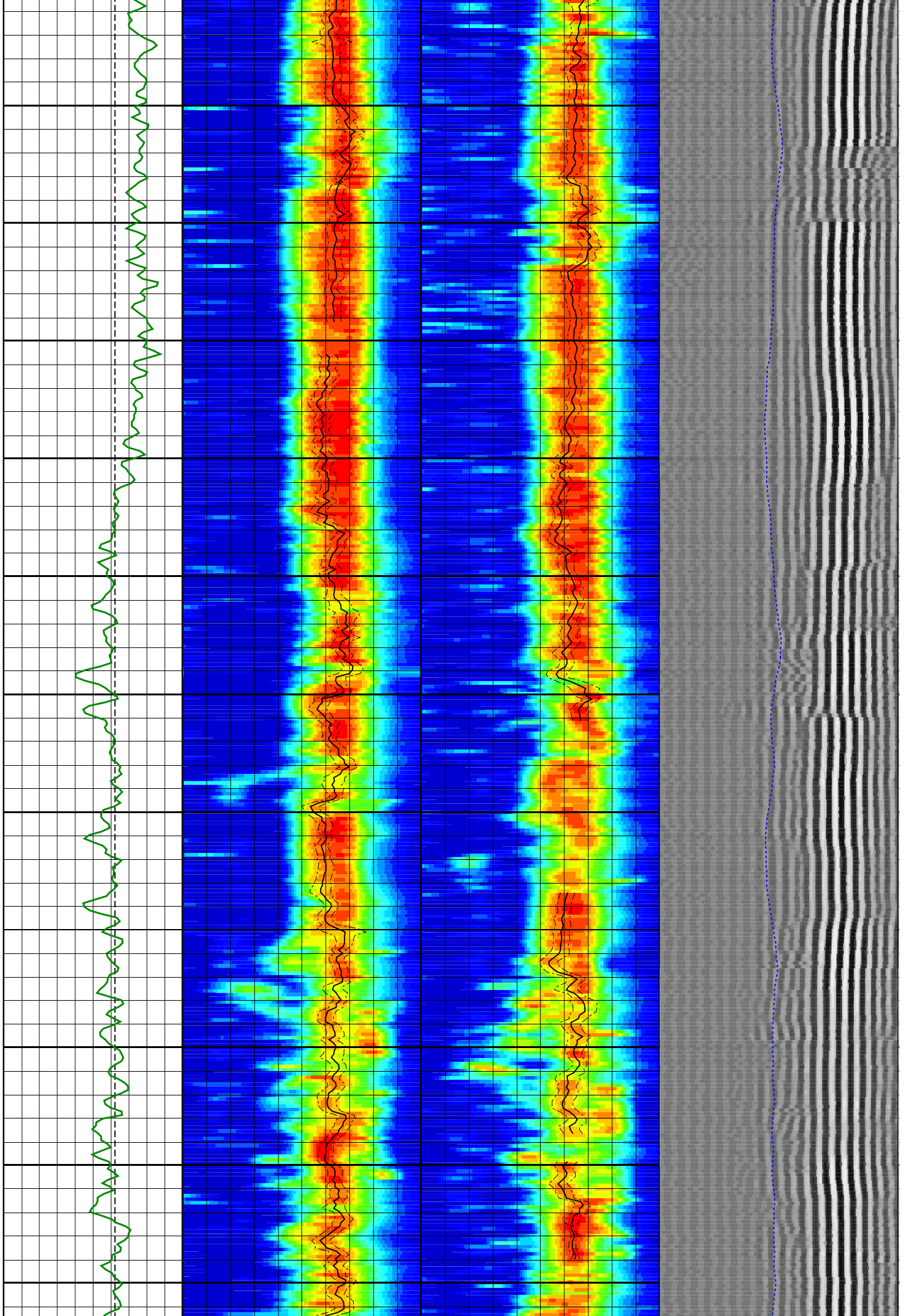
3930

3940

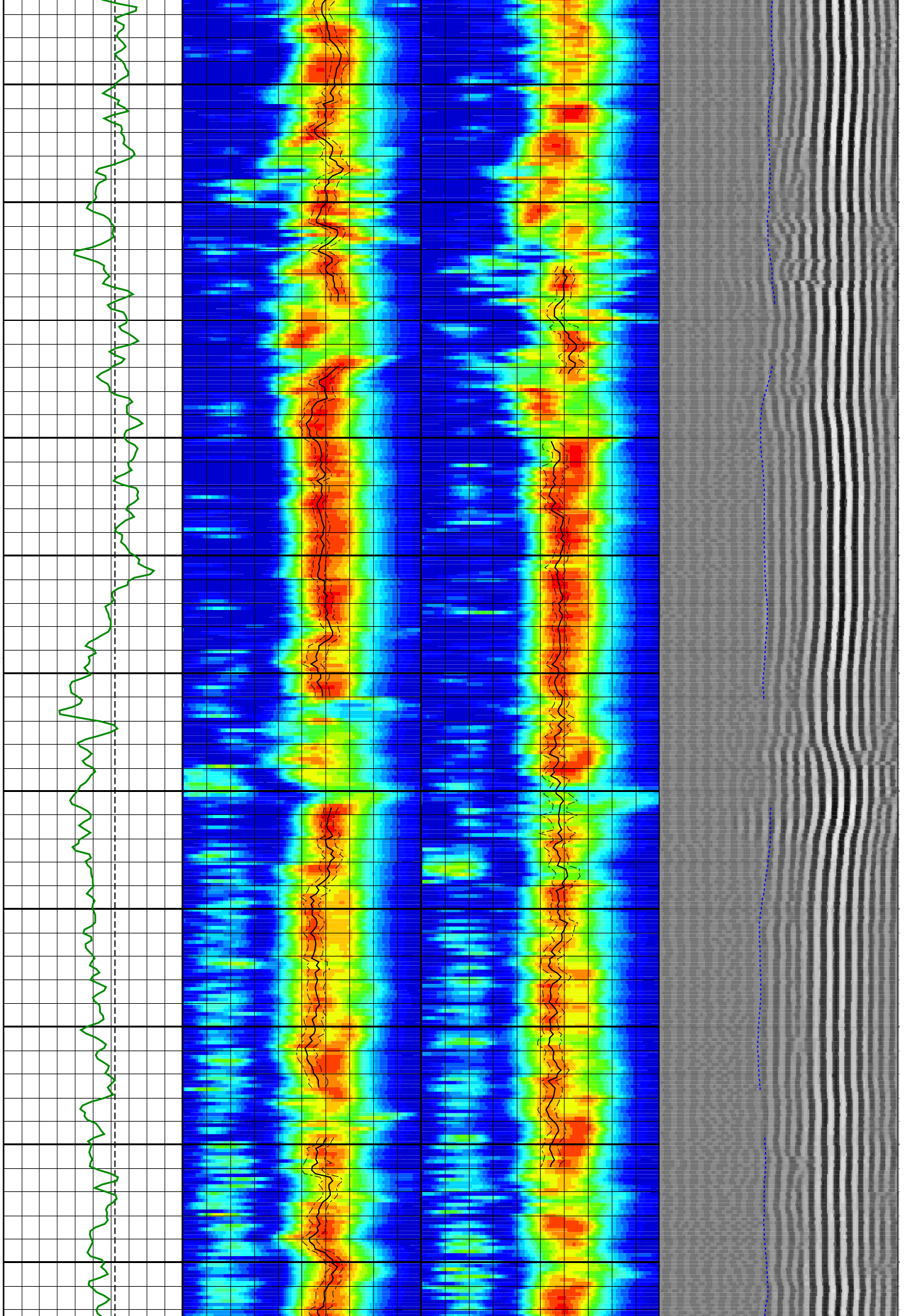
3950

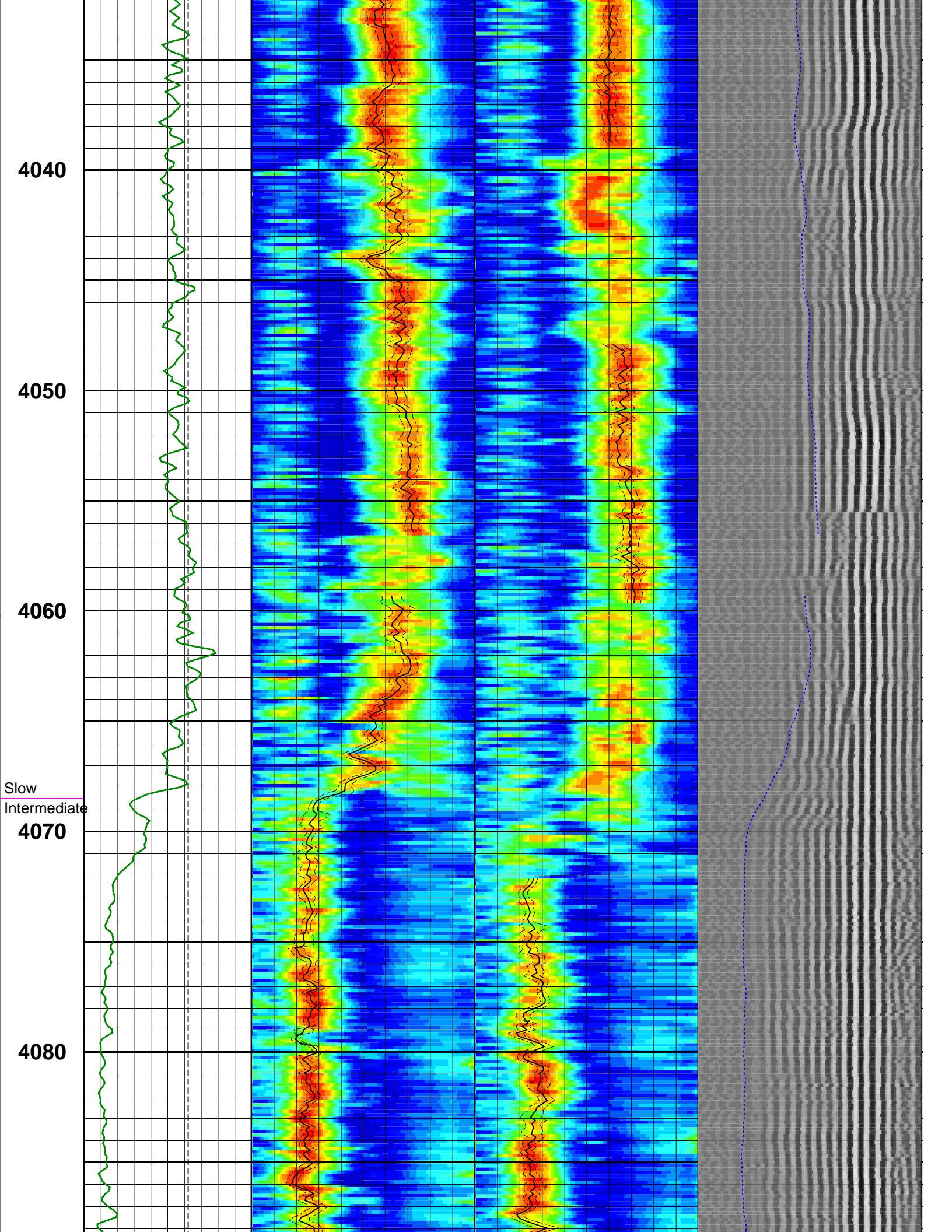
3960

3970

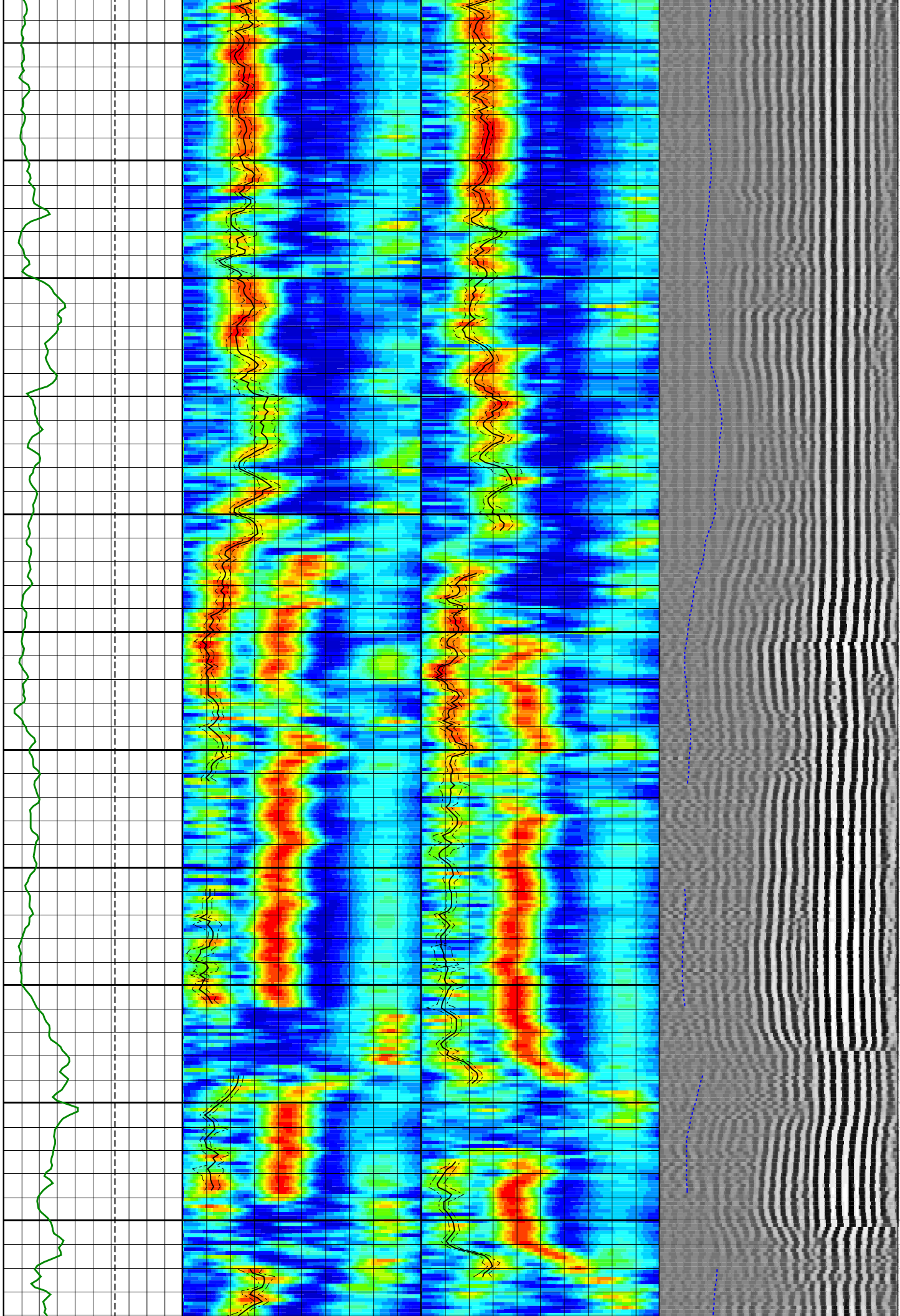


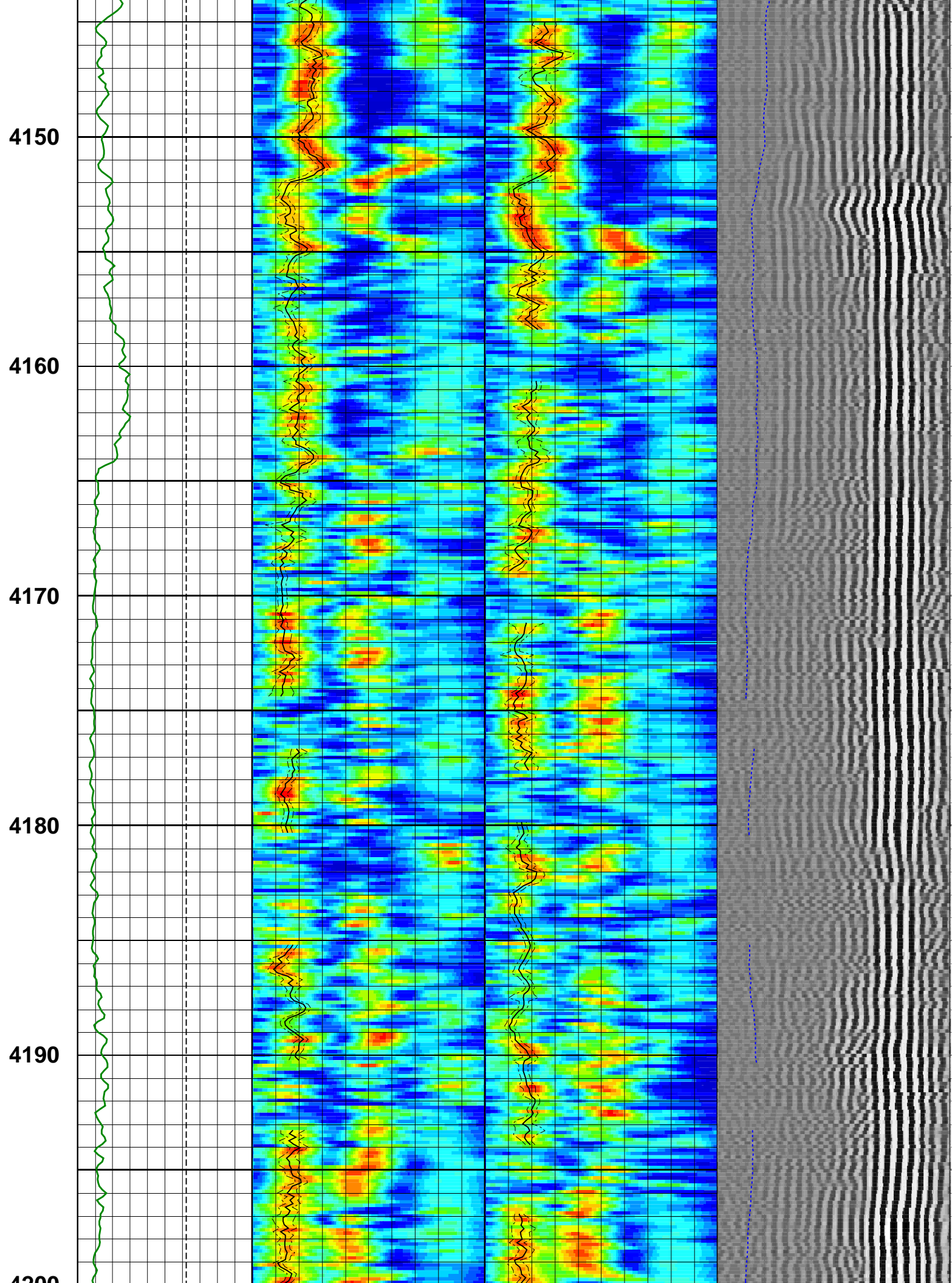
3980
3990
4000
4010
4020
4030

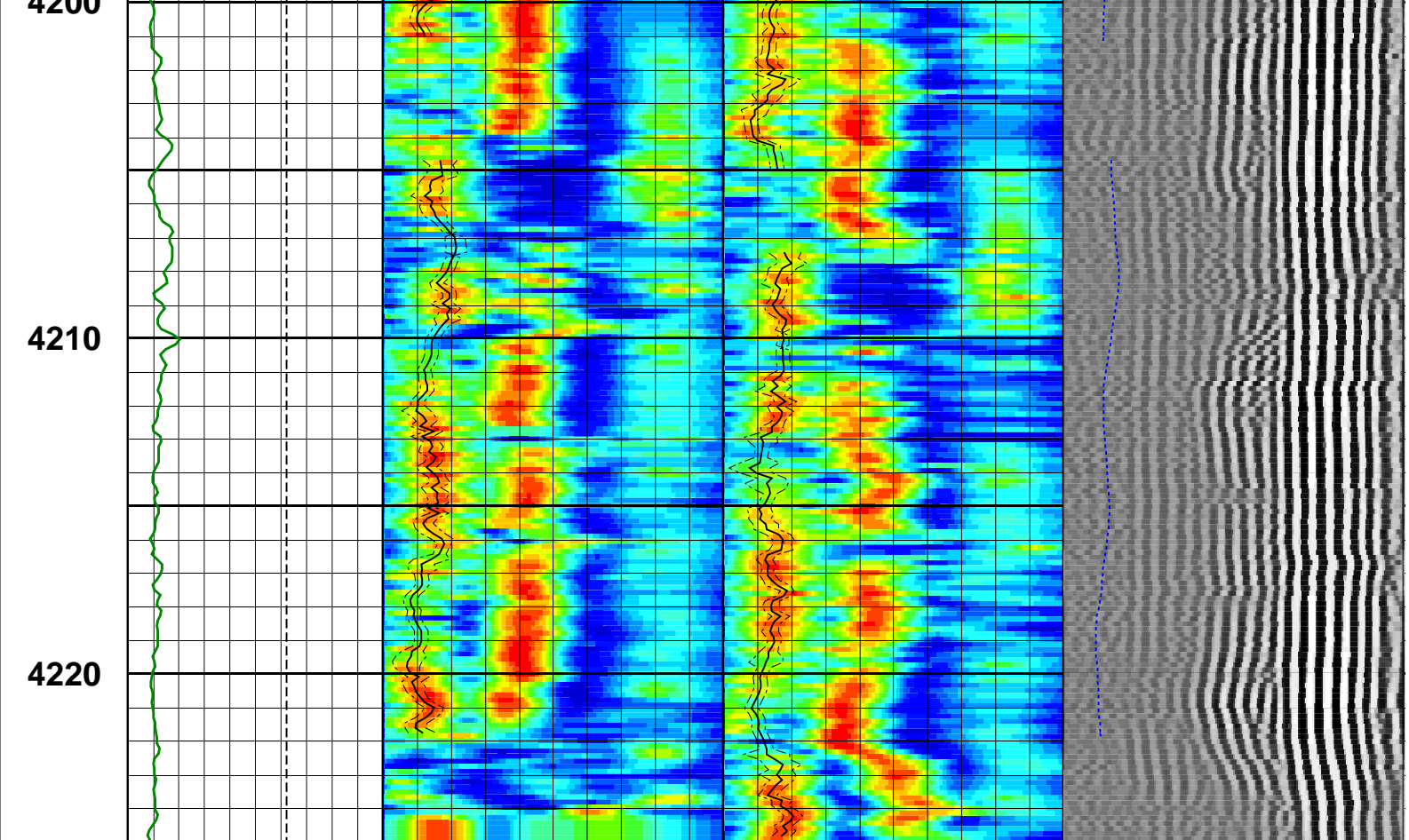




4090
4100
4110
4120
4130
4140







MD 1 : 200 m	GR_RAB	DtRC	DtTC	TICO
	0 (gAPI) 150	40 (us/ft) 240	40 (us/ft) 240	400 (us) 3378
	Bit Size	STPrjR	STPrjT	WF VDL
6 (in) 16	40 (us/ft) 240	40 (us/ft) 240	400 (us) 3378	
Wash Out				

Company: JAMSTEC
 Well: C0012H
 FIELD: Nankai Trough – Kumano Basin
 County:
 Prefecture: Wakayama

Date Logged: 04-Dec-2012 Date Processed: 07-Dec-2012
 Well Location: Philippine Sea
 X=679 623.175 m

Elevations: KB: 28.5m DF: 28.5m GL: -3509.5m
 API Number: Job Number:

