

geoVISION - APWD

Gamma Ray - Resistivity - Image - APWD
 12.25in Recorded Mode Log. True Vertical Depth
 Sub Sea 1:500



Company: JAMSTEC

Well: C0018B

Field: Nankai Trough - Kumano Basin

Rig Name: Chikyū

Prefecture: Wakayama

Country: Japan

Latitude: 33° 9' 25.914" N Custom: 12JAP0020

Longitude: 136° 40' 52.956" E Rig Name: Chikyū

Block: Rig Type: Drill Vessel

FL: Philippine Sea

FL1: X = 655 167.7158m

FL2: Y = 3 669 972.9081m

Log Measured From: - Drill Floor: 28.50 m
 Permanent Datum: - Mean Sea Level



Ground Level: 3084.50 m

Acquisition Dates: 26-Dec-2012

Other Services:

Log Interval: 3:105.00(m) -- 3:463.15(m)

DWOB, DTOR

Index Types: SSTVD

Direction and Inclination

Index Scales: 1:500

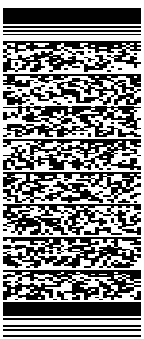
Drilling Mechanics

Depth Source: Driller's Depth

Depth Sensor: DES

Print Type: Final

Spud Date: 26-Dec-2012



Disclaimer

THE USE OF AND RELIANCE UPON THIS RECORDED-DATA BY THE HEREIN NAMED COMPANY (AND ANY OF ITS AFFILIATES, PARTNERS, REPRESENTATIVES, AGENTS, CONSULTANTS AND EMPLOYEES) IS SUBJECT TO THE TERMS AND CONDITIONS AGREED UPON BETWEEN SCHLUMBERGER AND THE COMPANY, INCLUDING: (a) RESTRICTIONS ON USE OF THE RECORDED-DATA; (b) DISCLAIMERS AND WAIVERS OF WARRANTIES AND REPRESENTATIONS REGARDING COMPANY'S USE AND RELIANCE UPON THE RECORDED-DATA; AND (c) CUSTOMER'S FULL AND SOLE RESPONSIBILITY FOR ANY INFERENCE DRAWN OR DECISION MADE IN CONNECTION WITH THE USE OF THIS RECORDED-DATA.

Contents

1. Header
2. Disclaimer
3. Contents
4. Well Sketch
5. Borehole Size/Casing/Tubing Record
6. Operational Run Summary
7. Borehole Fluids
8. Remarks and Equipment Summary
9. Survey Record
10. Run1
 - 10.1 Integration Summary
 - 10.2 Composite Summary
 - 10.3 Log (GVR Image-APWD Depth RM_NoTick)
 - 10.4 Parameter Listing
11. Run1
 - 11.1 Integration Summary
 - 11.2 Composite Summary

11.3 Log (DML Depth RM)

11.4 Parameter Listing

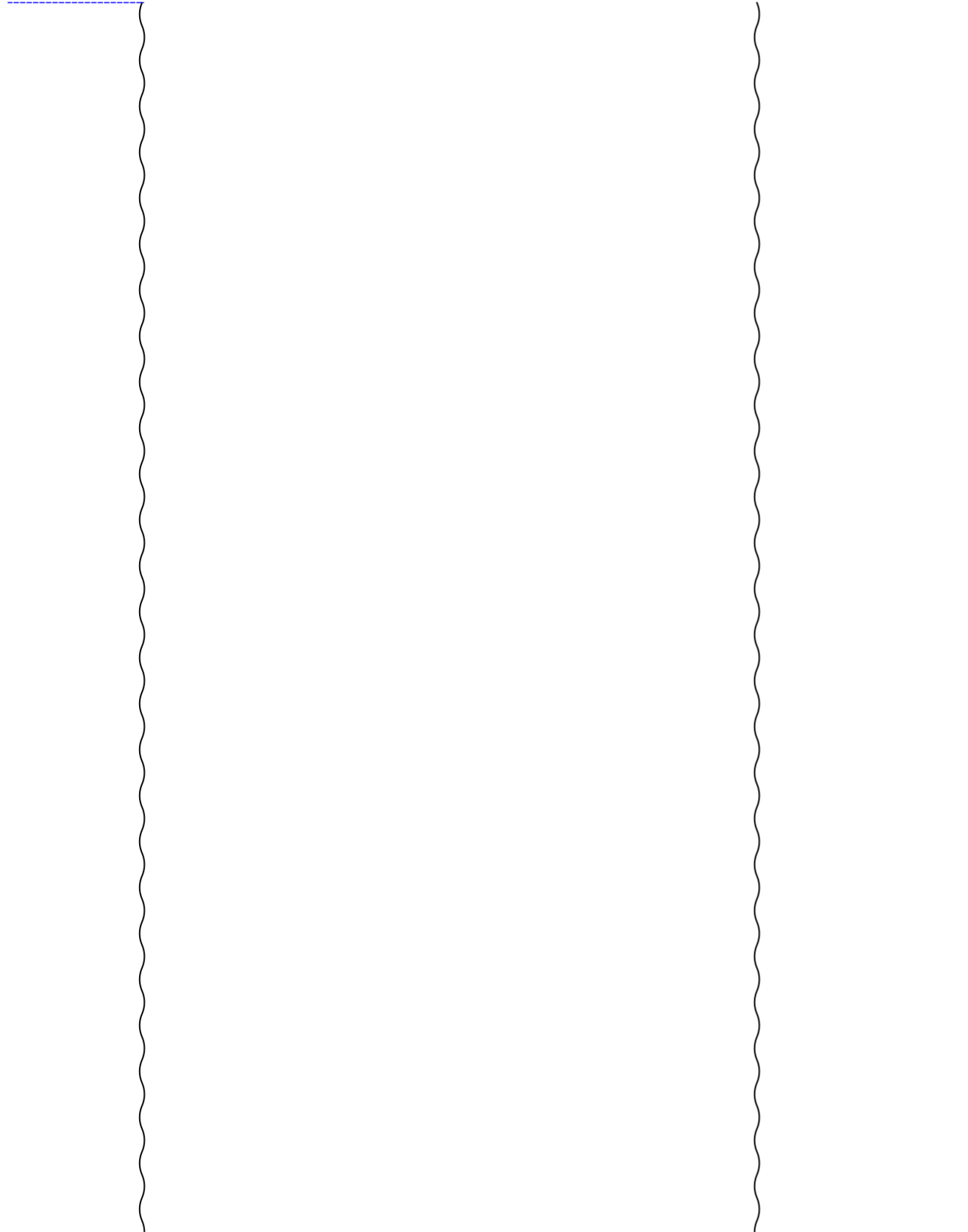
12. Calibration Report

13. Tail

Well Sketch

Driller Depth

3113.00 m



3463.19 m

Open Hole 12.25in

Borehole Size/Casing Record

Bit					
Bit Size (in)	12.25				
Top Driller (m)	3113				
Bottom Driller (m)	3463.19				

Operational Run Summary

Parameter (unit)	Run 1				
Date Log Started	25-Dec-2012				
Time Log Started	17:03:32				
Date Log Finished	26-Dec-2012				
Time Log Finished	19:56:41				
Bit Size (in)	12.250				
Bit Start Depth (m)	3113.00				
Bit Stop Depth (m)	3463.20				
Top Log Interval (m)	3113.00				
Bottom Log Interval (m)	3462.94				
Max Hole Deviation (deg)	1.60				
Azimuth of Max Deviation (deg)	281.92				
Logging Unit Number	OLU-KC-0504				
Logging Unit Location	Comp Deck				
Recorded By	Wang Feng TomasCosendey				
Witnessed By	Yoshi Sanada				
Service Order Number	12JAP0020				

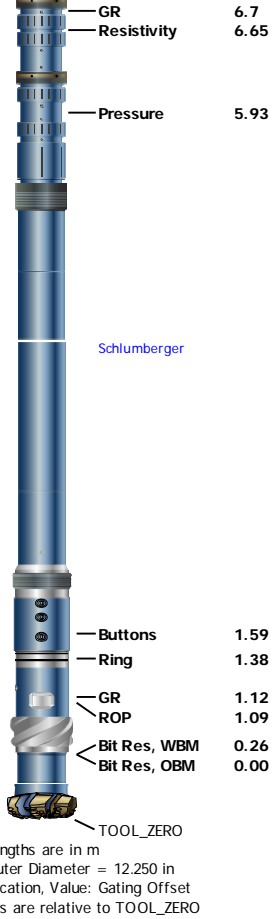
Borehole Fluids

Parameter(unit)	Run 1				
Fluid Type	Water				
Fluid Name	Sea Water				
Max Recorded Temperatures (degC)	5				
Source of Sample	Active Tank				
Salinity (ppm)	30470.42				
Density (g/cm3)	1.04				
Funnel Viscosity (s)					

Fluid Loss (cm3)						
PH	10.7					
Source RMF						
RMC	Pressed					
RM @ Meas Temp (ohm.m@degC)	0.22 @ 20.3					
RMF @ Meas Temp (ohm.m@degC)	0.15 @ 20					
RMC @ Meas Temp (ohm.m@degC)						
RM @ BHT (ohm.m@degC)	0.35 @ 5					
RMF @ BHT (ohm.m@degC)						
RMC @ BHT (ohm.m@degC)	NaN @ 5					
Total Solid (%)						
High Gravity Solids (%)						

Remarks and Equipment Summary

Run1: Toolstring				Run1: Remarks				
Equip name TELE825-IWOB:G 0159	Length 18.99	MP name Schlumberger	Offset	Data presented is Recorded Mode data which was acquired while drilling.				
				Depth reference is driller's depth measured from Rotary Table.				
				geoVISION record rate is 5s, APWD record rate is 5s.				
				geoVISION GR is corrected for bit size, tool size and mud weight. No potassium concentration in mud.				
				geoVISION resistivity is environmentally corrected for bit size and mud resistivity.				
				Reason for POOH: Well TD.				
				Drilling Time: 9.17 hrs				
				Pumping Time: 13.26 hrs				
				Warning in calibration list is due to MaxWell bug.				
					D&I	14.21		
					GR	13.56		
	ROP	11.85						
	IWOB	10.84						
ARC8:2791-SRPC 10.08	Schlumberger							
	ROP	7.76						



RAB8:42825/413 47
47

Schlumberger

Bit: 12 1/4":A162 762
762

Lengths are in m
Maximum Outer Diameter = 12.250 in
Line: Sensor Location, Value: Gating Offset
All measurements are relative to TOOL_ZERO

Survey Record

Survey Calculation

Method :	Minimum Radius of Curvature	DLS Method :	Lubinski
North Reference :	Grid North	Total Correction Formula :	Magnetic Dec - Grid Convergence
Grid Convergence :	0.92 deg		

Rig Location

Latitude :	33° 9' 25.914" N	Longitude :	136° 40' 52.956" E
------------	------------------	-------------	--------------------

Tie In Point

Measured Depth:	0.00 m	Inclination:	0.00 deg	Azimuth:	0.00 deg
True Vertical Depth:	0.00 m	North Displacement:	0.00 m	East Displacement:	0.00 m
N/-S VSec Origin:	0.00 m	E/-W VSec Origin:	0.00 m	Vertical Section Azimuth:	0.00 deg

D&I Inits Computed and Values Used - Run1

Geomagnetic Model :	BGGM 2011	Geomagnetic Date :	21-Dec-2012
Computed Location B :	45873.94 nT +/- 300.00nT	Used Location B :	45873.94 nT +/- 300.00nT
Computed Location G :	9.80 m/s2 +/- 0.02m/s2	Used Location G :	9.80 m/s2 +/- 0.02m/s2
Computed Magnetic Dip :	46.64 deg +/- 0.45deg	Used Magnetic Dip :	46.64 deg +/- 0.45deg
Computed Magnetic Dec :	-6.70 deg	Used Magnetic Dec :	-6.70 deg
Computed Total Correction :	-7.62 deg	Used Total Correction :	-7.62 deg

Survey Quality Index

0 : Long Survey passed all criteria 9 : Manual 28 : Tie-In Point

Survey Correction Index

0 : No correction

Survey Description Index

0 : Not Flagged Survey 11 : Secondary Tie-In Point

Seq	MD (m)	Incl (deg)	Azim (deg)	Course (m)	TVD (m)	V Sec (m)	N/ -S (m)	E/ -W (m)	Closure (m)	at Azim (deg)	DLS deg/30m	Tool Type	QI	CI	DI
1	0.00	0.00	0.00	----	0.00	0.00	0.00	0.00	0.00	90.00	0.00	TIP	28	0	0
2	3113.00	0.00	0.00	3113.00	3113.00	0.00	0.00	0.00	0.00	90.00	0.00	Other	9	0	11
3	3118.67	0.63	336.91	5.67	3118.67	0.03	0.03	-0.01	0.03	336.91	3.33	TeleScope	0	0	0
4	3158.72	1.60	281.92	40.06	3158.71	0.35	0.35	-0.65	0.73	298.21	1.01	TeleScope	0	0	0
5	3197.12	1.38	279.03	38.40	3197.10	0.53	0.53	-1.63	1.71	288.04	0.19	TeleScope	0	0	0
6	3234.92	0.88	280.72	37.79	3234.89	0.65	0.65	-2.36	2.45	285.51	0.39	TeleScope	0	0	0

7	3273.35	0.63	279.81	38.43	3273.32	0.75	0.75	-2.86	2.95	284.62	0.20	TeleScope	0	0	0
8	3311.73	0.39	288.97	38.39	3311.70	0.82	0.82	-3.19	3.30	284.49	0.20	TeleScope	0	0	0
9	3349.23	0.31	291.47	37.50	3349.20	0.90	0.90	-3.40	3.52	284.85	0.07	TeleScope	0	0	0
10	3387.87	0.18	281.45	38.63	3387.83	0.95	0.95	-3.56	3.69	284.98	0.10	TeleScope	0	0	0
11	3426.23	0.12	249.90	38.36	3426.19	0.95	0.95	-3.66	3.78	284.58	0.08	TeleScope	0	0	0

Run1

Integration Summary

Output Channel(s)	Output Description	Input Parameter	Output Value	Unit
-------------------	--------------------	-----------------	--------------	------

Pass Summary

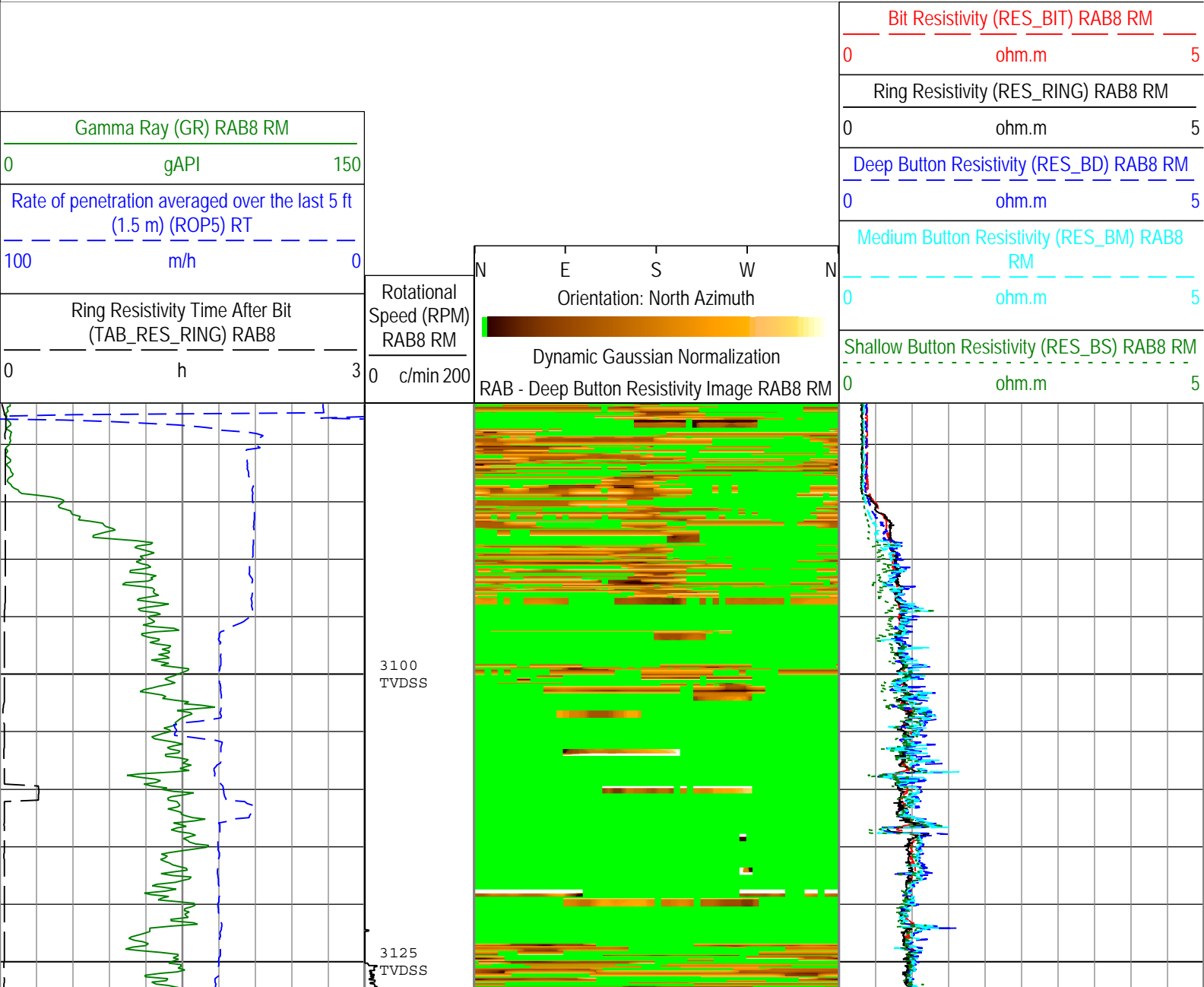
Run Name	Pass Objective	Direction	Top	Bottom	Start	Stop	Include Parallel Data
Run1	Drilling	Down	3080.05 m	3463.19 m	26-Dec-2012 3:46:59 AM	26-Dec-2012 7:56:41 PM	

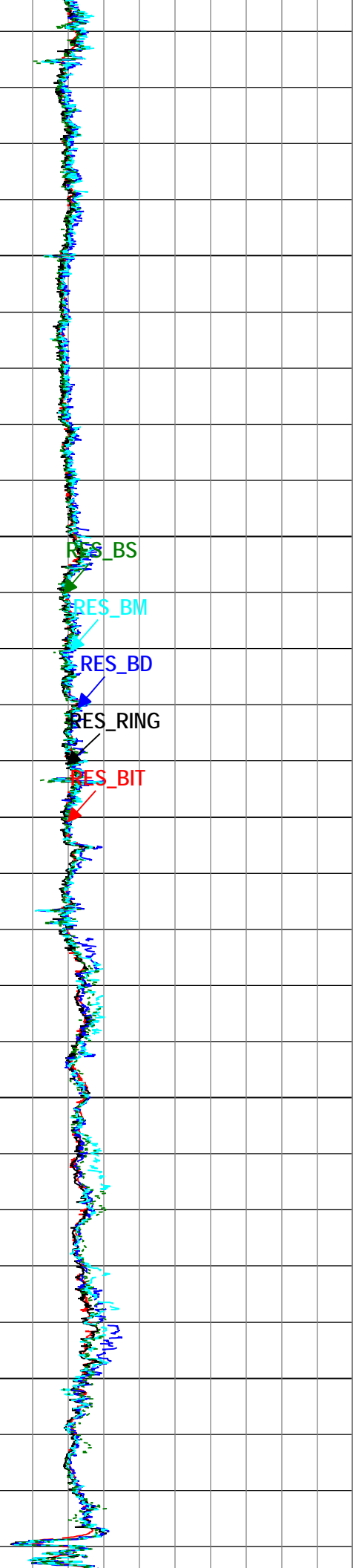
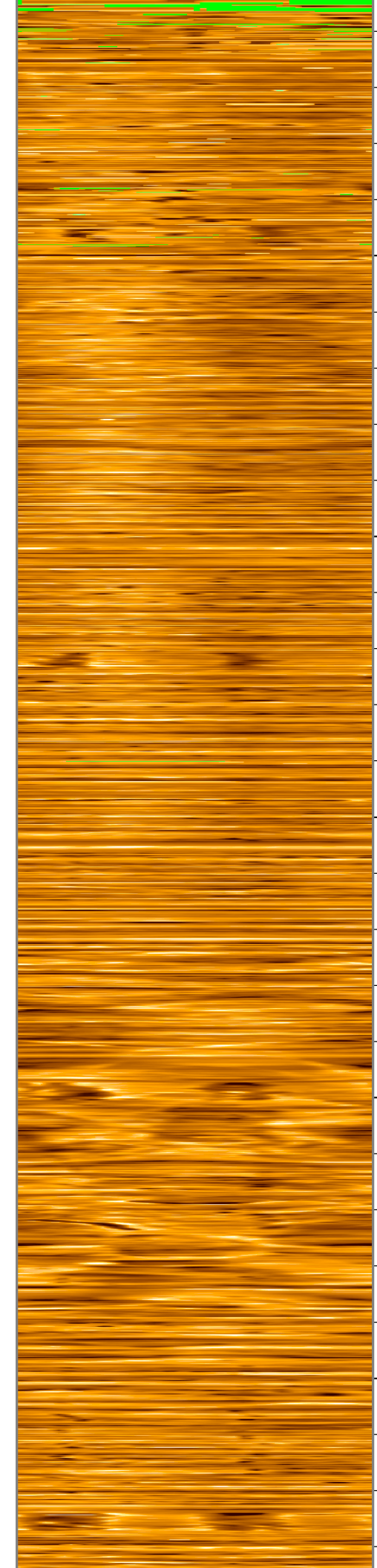
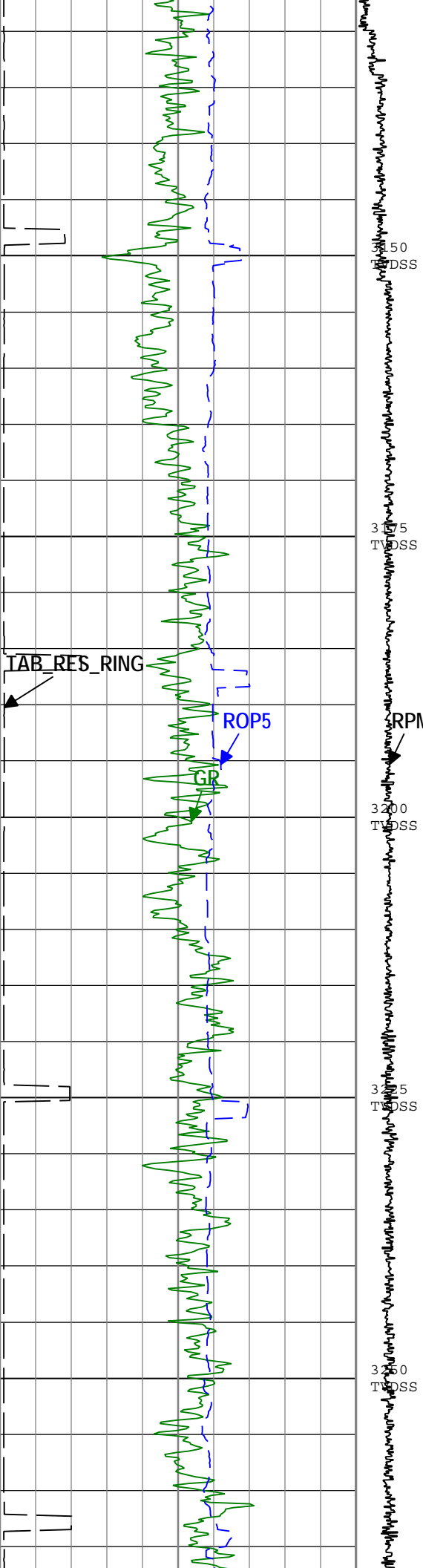
All depths are referenced to toolstring zero

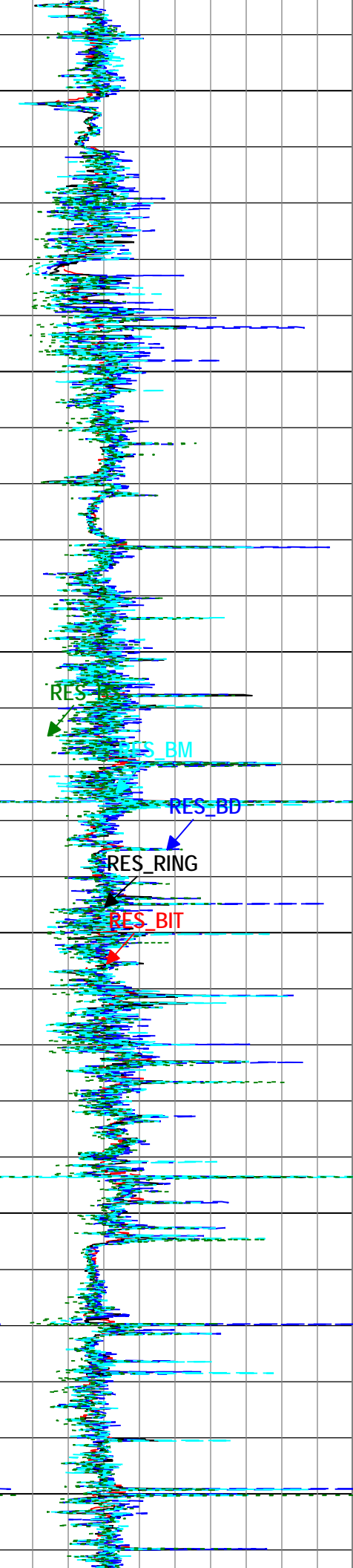
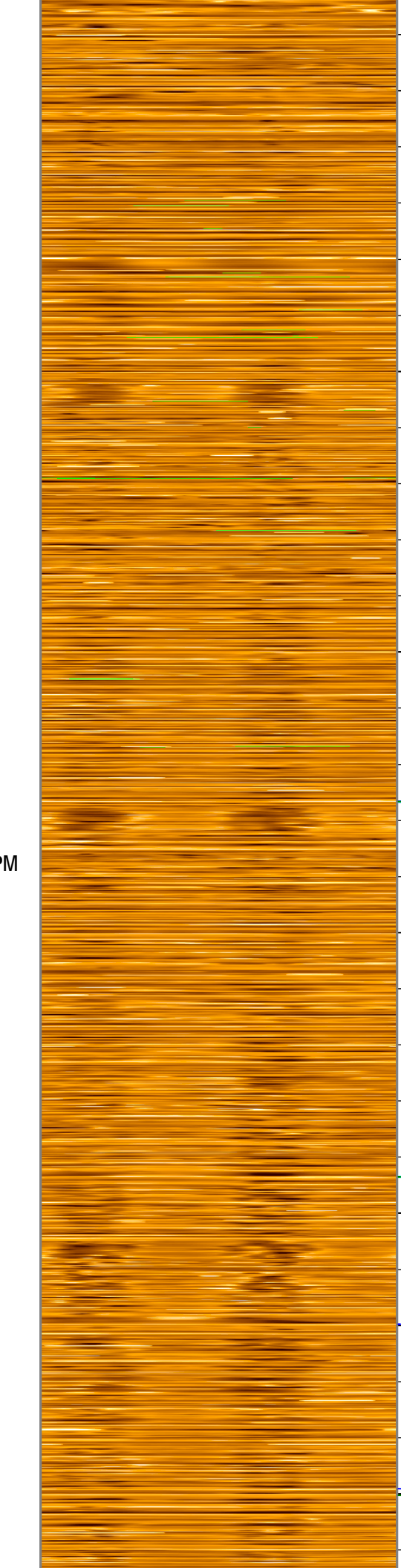
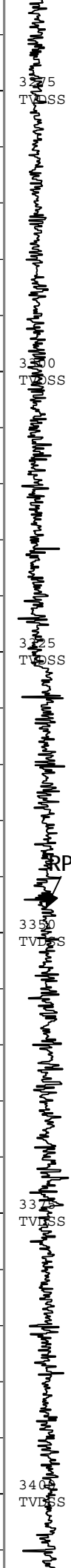
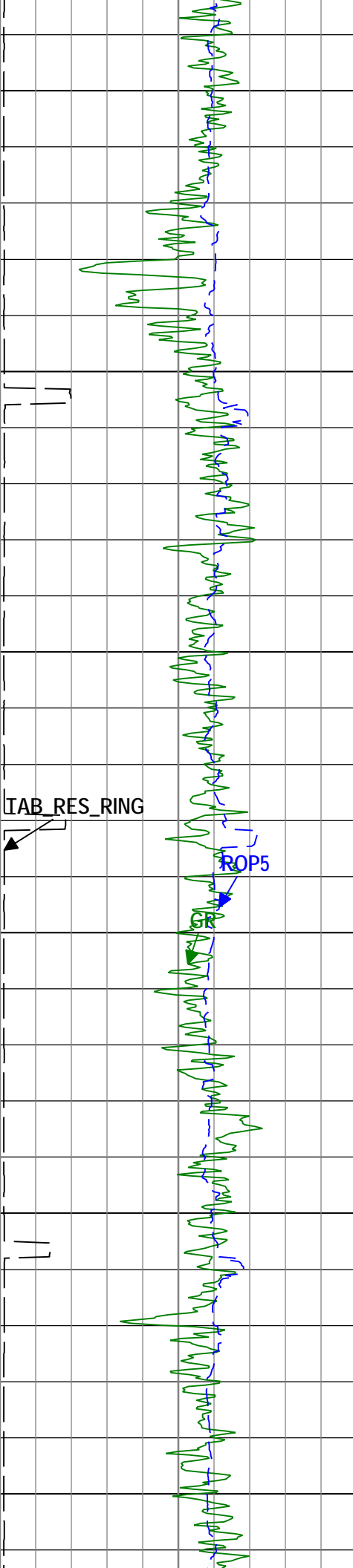
Log

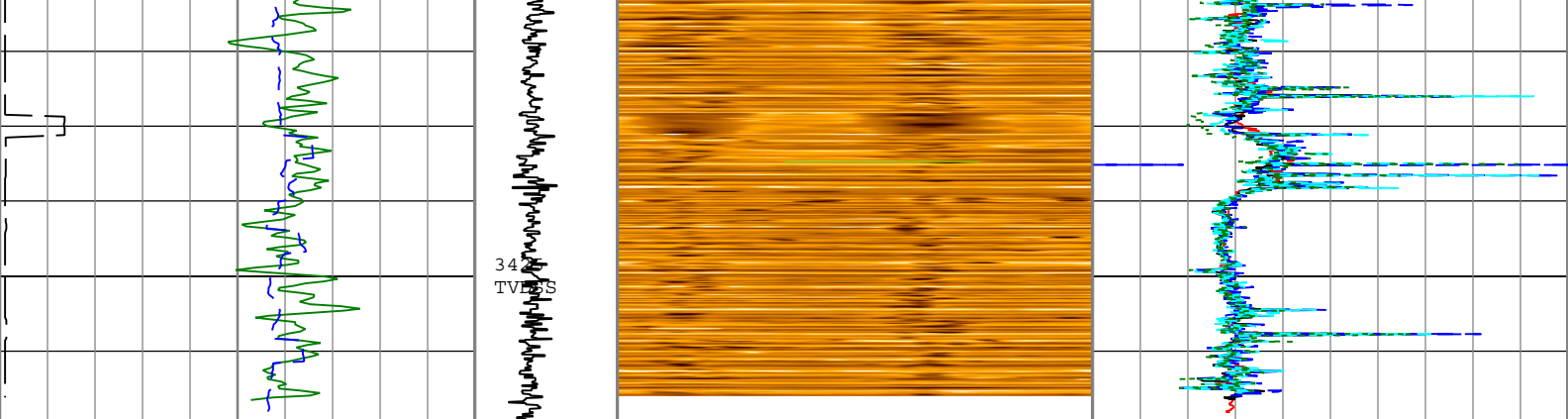
Run1: Drilling

Description: GVR Resistivity, Deep Button Image SSTVD Format: Log (GVR Image-APWD Depth RM_NoTick) Index Scale: 1:500 Index Unit: m Index Type:



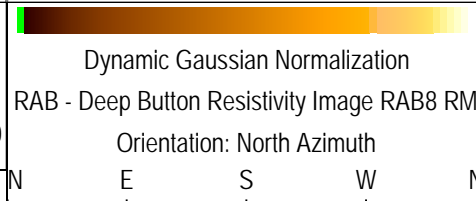






Gamma Ray (GR) RAB8 RM	0	150
gAPI		
Rate of penetration averaged over the last 5 ft (1.5 m) (ROP5) RT	100	0
m/h		
Ring Resistivity Time After Bit (TAB_RES_RING) RAB8	0	3
h		

Rotational Speed (RPM) RAB8 RM	0	200
c/min		



Bit Resistivity (RES_BIT) RAB8 RM	0	5
ohm.m		
Ring Resistivity (RES_RING) RAB8 RM	0	5
ohm.m		
Deep Button Resistivity (RES_BD) RAB8 RM	0	5
ohm.m		
Medium Button Resistivity (RES_BM) RAB8 RM	0	5
ohm.m		
Shallow Button Resistivity (RES_BS) RAB8 RM	0	5
ohm.m		

Description: GVR Resistivity, Deep Button Image Format: Log (GVR Image-APWD Depth RM_NoTick) Index Scale: 1:500 Index Unit: m Index Type: SSTVD Creation Date: 10-Jan-2013 17:14:58

Channel Processing Parameters

Parameter	Description	Tool	Value	Unit
BHK	Drilling Fluid Potassium Concentration	Borehole	0	%
BHT	Bottom Hole Temperature	Borehole	5	degC
DEPTH_SEL	Depth Selection Parameter	DNMSESSION	Driller's Depth	
DFD	Drilling Fluid Density	Borehole	1.04	g/cm3
DFT	Drilling Fluid Type	Borehole	Water	
GRSE_RM	Generalized Mud Resistivity Selection for Recorded Mode	Borehole	REMS	
GTSE_RT	Generalized Temperature Selection for Realtime Mode	Borehole	GTEM_LINEST(RT)	
MST	Mud Sample Temperature	Borehole	20.3	degC
RES_BD_IMG_SEL	GVR Output Resistivity Image Selection, Deep Button	RAB8	Compensated Uphole	
RMS	Resistivity of Mud Sample	Borehole	0.22	ohm.m
SHT	Surface Hole Temperature	Borehole	1.5	degC
TD	Total Measured Depth	Borehole	3463.2	m

Tool Control Parameters

Parameter	Description	Tool	Value	Unit
OFFBTM_TH	Threshold for deciding whether the bit is off bottom	DNMSESSION	0.6	m

Run1

Integration Summary

Output Channel(s)	Output Description	Input Parameter	Output Value	Unit
-------------------	--------------------	-----------------	--------------	------

Pass Summary

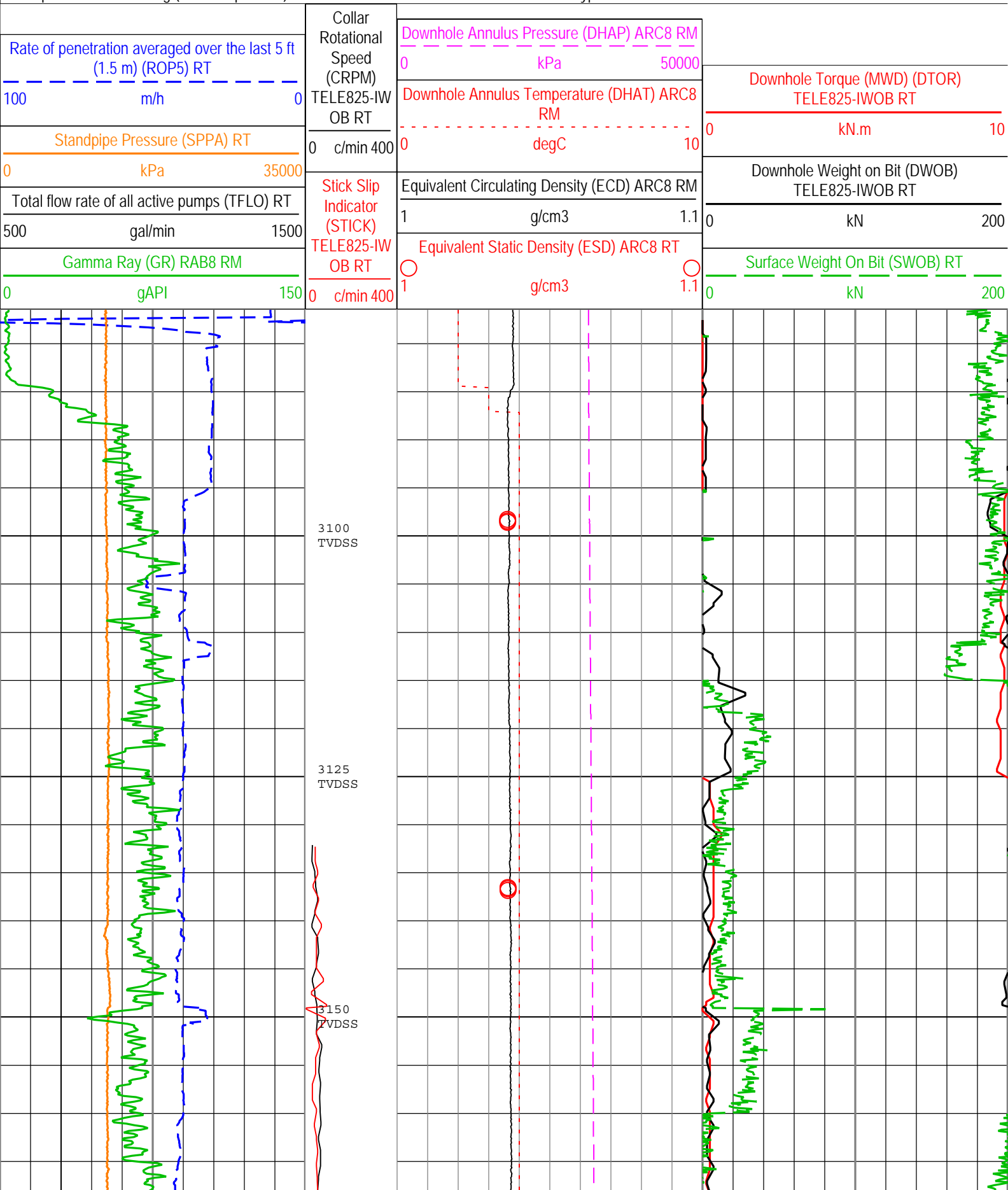
Run	Pass Objective	Direction	Top	Bottom	Start	Stop	Include
-----	----------------	-----------	-----	--------	-------	------	---------

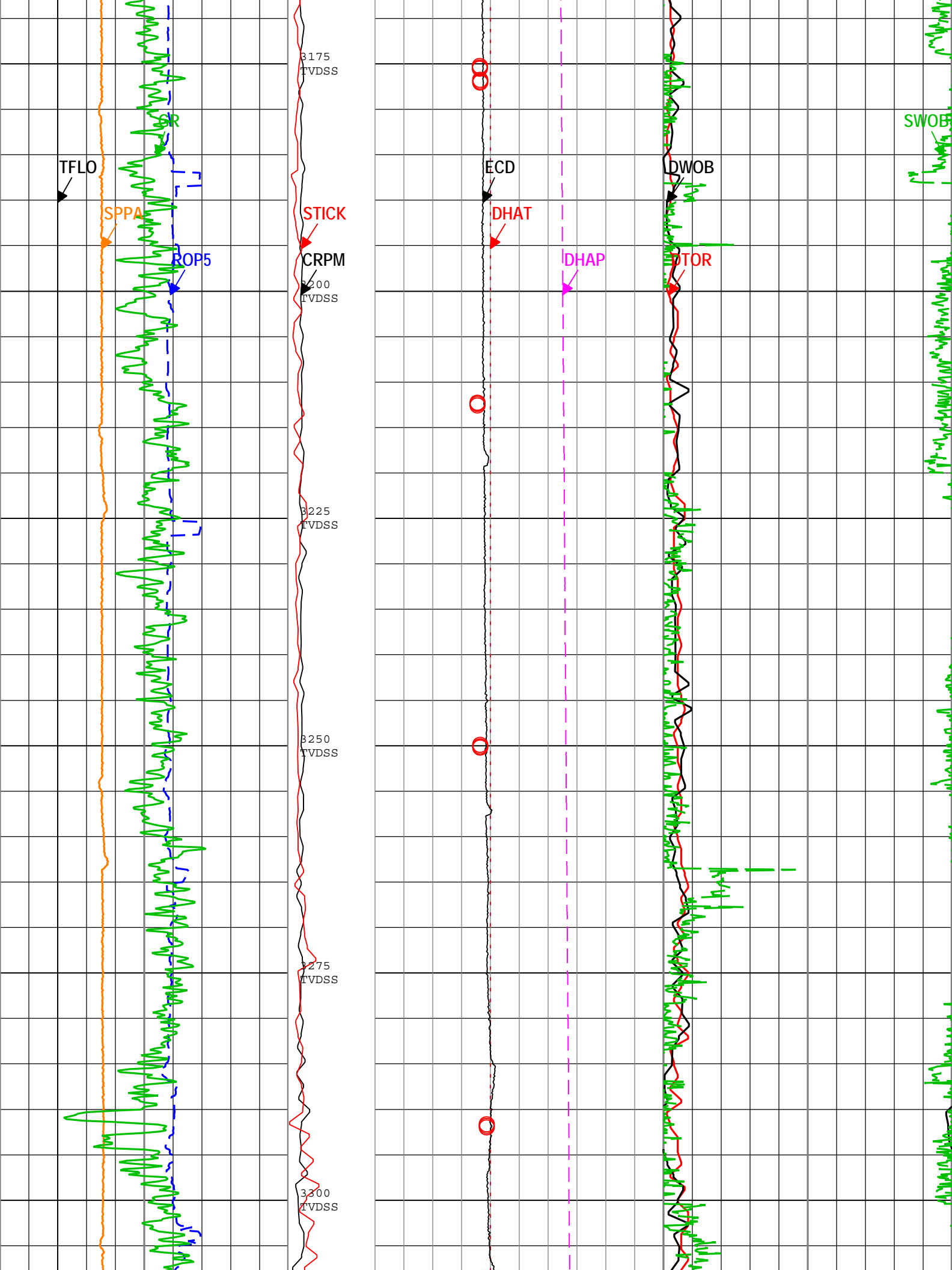
Name						Parallel Data
Run1	Drilling	Down	3080.05 m	3463.19 m	26-Dec-2012 3:46:59 AM	26-Dec-2012 7:56:41 PM

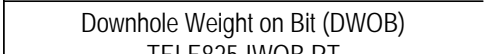
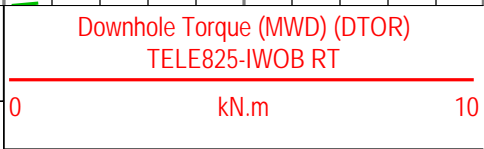
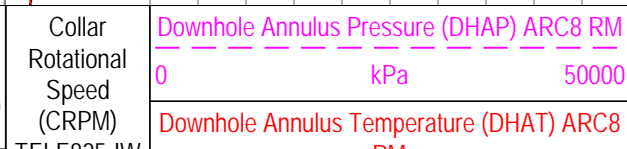
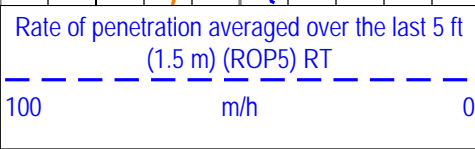
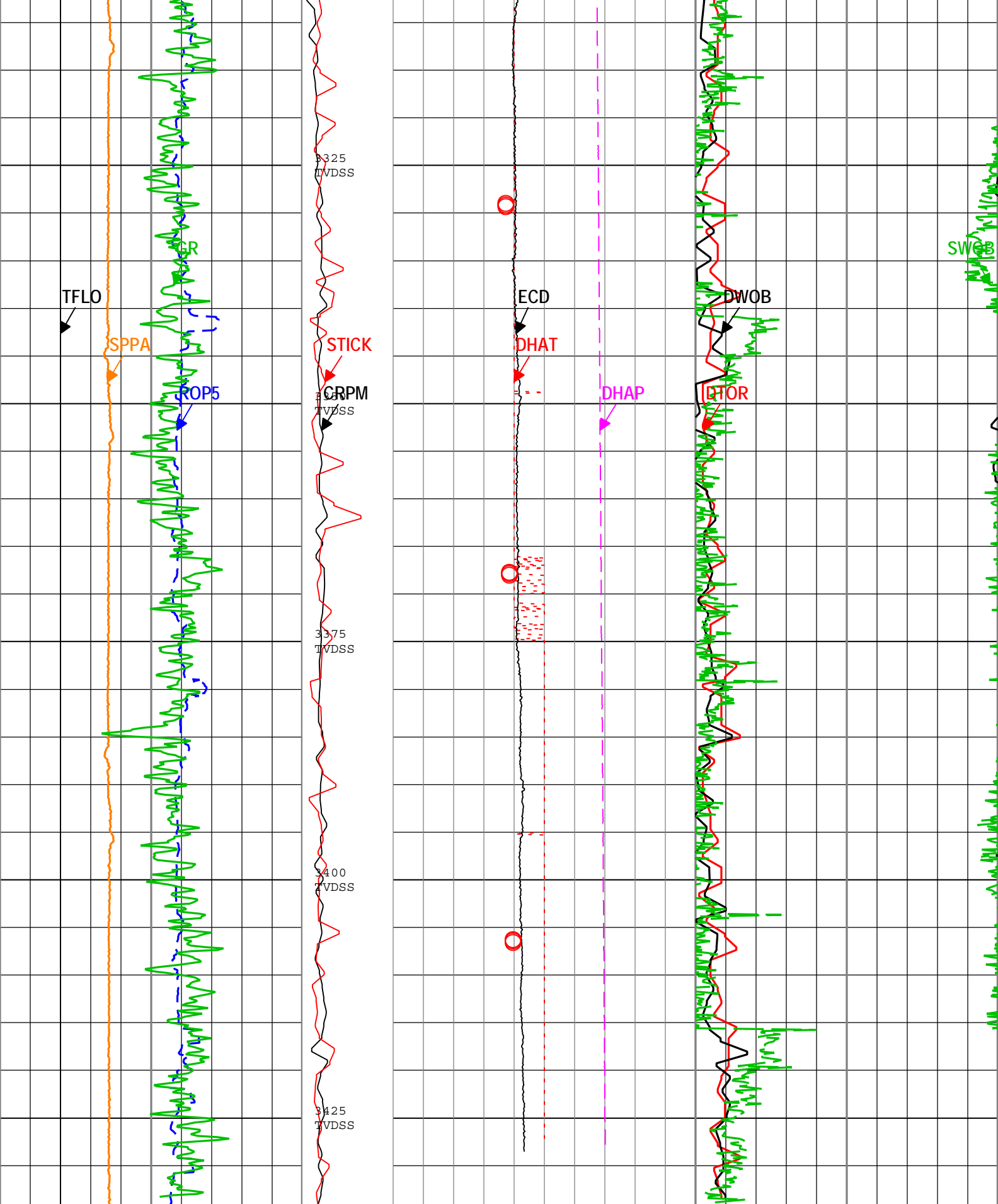
All depths are referenced to toolstring zero

Log Run1: Drilling

Description: Format: Log (DML Depth RM) Index Scale: 1:500 Index Unit: m Index Type: SSTVD Creation Date: 10-Jan-2013 17:15:03







0	kPa	35000	0	c/min	400	0	degC	10	0	KN	200
Total flow rate of all active pumps (TFLO) RT			Stick Slip Indicator (STICK) TELE825-IW OB RT			Equivalent Circulating Density (ECD) ARC8 RM			Surface Weight On Bit (SWOB) RT		
500	gal/min	1500	1			1	g/cm3	1.1	0	KN	200
Gamma Ray (GR) RAB8 RM			Equivalent Static Density (ESD) ARC8 RT								
0	gAPI	150	1			1	g/cm3	1.1	0	KN	200
			0 c/min 400								

Description: Format: Log (DML Depth RM) Index Scale: 1:500 Index Unit: m Index Type: SSTVD Creation Date: 10-Jan-2013 17:15:03

Calibration Report

RAB8 (GeoVision Resistivity 825) Calibration - Run Run1

Primary Equipment :
Electronics Chassis
RBEC
865

M21V - Resistivity

Master (Time Frame File): 04:11:41 23-Nov-2012

Measurement	Unit	Phase	Nominal	Low Limit	Actual	High Limit	
Monitor 2 at T1 Calibration Coefficient		Master	1.00000	0.90000	1.02224	1.20000	

M22V - Resistivity

Master (Time Frame File): 04:11:41 23-Nov-2012

Measurement	Unit	Phase	Nominal	Low Limit	Actual	High Limit	
Monitor 2 at T2 Calibration Coefficient		Master	1.00000	0.90000	0.99342	1.20000	

M01V - Resistivity

Master (Time Frame File): 04:11:41 23-Nov-2012

Measurement	Unit	Phase	Nominal	Low Limit	Actual	High Limit	
Monitor 0 at T1 Calibration Coefficient		Master	1.00000	0.90000	1.05380	1.20000	

M02V - Resistivity

Master (Time Frame File): 04:11:41 23-Nov-2012

Measurement	Unit	Phase	Nominal	Low Limit	Actual	High Limit	
Monitor 0 at T2 Calibration Coefficient		Master	1.00000	0.90000	1.04467	1.20000	

R1V - Resistivity

Master (Time Frame File): 04:11:41 23-Nov-2012

Measurement	Unit	Phase	Nominal	Low Limit	Actual	High Limit	
Ring at T1 Calibration Coefficient		Master	0.01000	0.00950	0.01096	0.01250	

R2V - Resistivity

Master (Time Frame File): 04:11:41 23-Nov-2012

Measurement	Unit	Phase	Nominal	Low Limit	Actual	High Limit	
Ring at T2 Calibration Coefficient		Master	0.01000	0.00950	0.01097	0.01250	

BDM1 - Resistivity

Master (Time Frame File): 04:11:41 23-Nov-2012

Measurement	Unit	Phase	Nominal	Low Limit	Actual	High Limit	
Button Deep at T1 Calibration Coefficient		Master	0.00067	0.00057	0.00066	0.00077	

BDM2 - Resistivity

Master (Time Frame File): 04:11:41 23-Nov-2012

Measurement	Unit	Phase	Nominal	Low Limit	Actual	High Limit	
Button Deep at T2 Calibration Coefficient		Master	0.00067	0.00057	0.00066	0.00077	

BMM1 - Resistivity

Master (Time Frame File): 04:11:41 23-Nov-2012

Measurement	Unit	Phase	Nominal	Low Limit	Actual	High Limit	
Button Medium at T1 Calibration Coefficient		Master	0.00067	0.00057	0.00069	0.00077	

BMM2 - Resistivity

Master (Time Frame File): 04:11:41 23-Nov-2012

Measurement	Unit	Phase	Nominal	Low Limit	Actual	High Limit	
Button Medium at T2 Calibration Coefficient		Master	0.00067	0.00057	0.00069	0.00077	

BSM1 - Resistivity

Master (Time Frame File): 04:11:41 23-Nov-2012

Measurement	Unit	Phase	Nominal	Low Limit	Actual	High Limit	

BSM2 - Resistivity

Master (Time Frame File): 04:11:41 23-Nov-2012

Measurement	Unit	Phase	Nominal	Low Limit	Actual	High Limit	
Button Shallow at T2 Calibration Coefficient		Master	0.00067	0.00057	0.00067	0.00077	

PGR - Gamma Ray: Blanket

Master (Time Frame File): 02:46:22 23-Nov-2012

Measurement	Unit	Phase	Nominal	Low Limit	Actual	High Limit	
Gamma Ray API Conversion Factor		Master	8.5500	6.5000	10.2700	10.6000	

Company: JAMSTEC

Well: C0018B


Field: Nankai Trough - Kumano Basin

Rig Name: Chikyu

Prefecture: Wakayama

Country: Japan





geoVISION - APWD

Gamma Ray - Resistivity - Image - APWD

12.25in Recorded Mode Log. True Vertical Depth Sub Sea 1:500